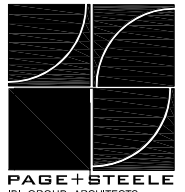
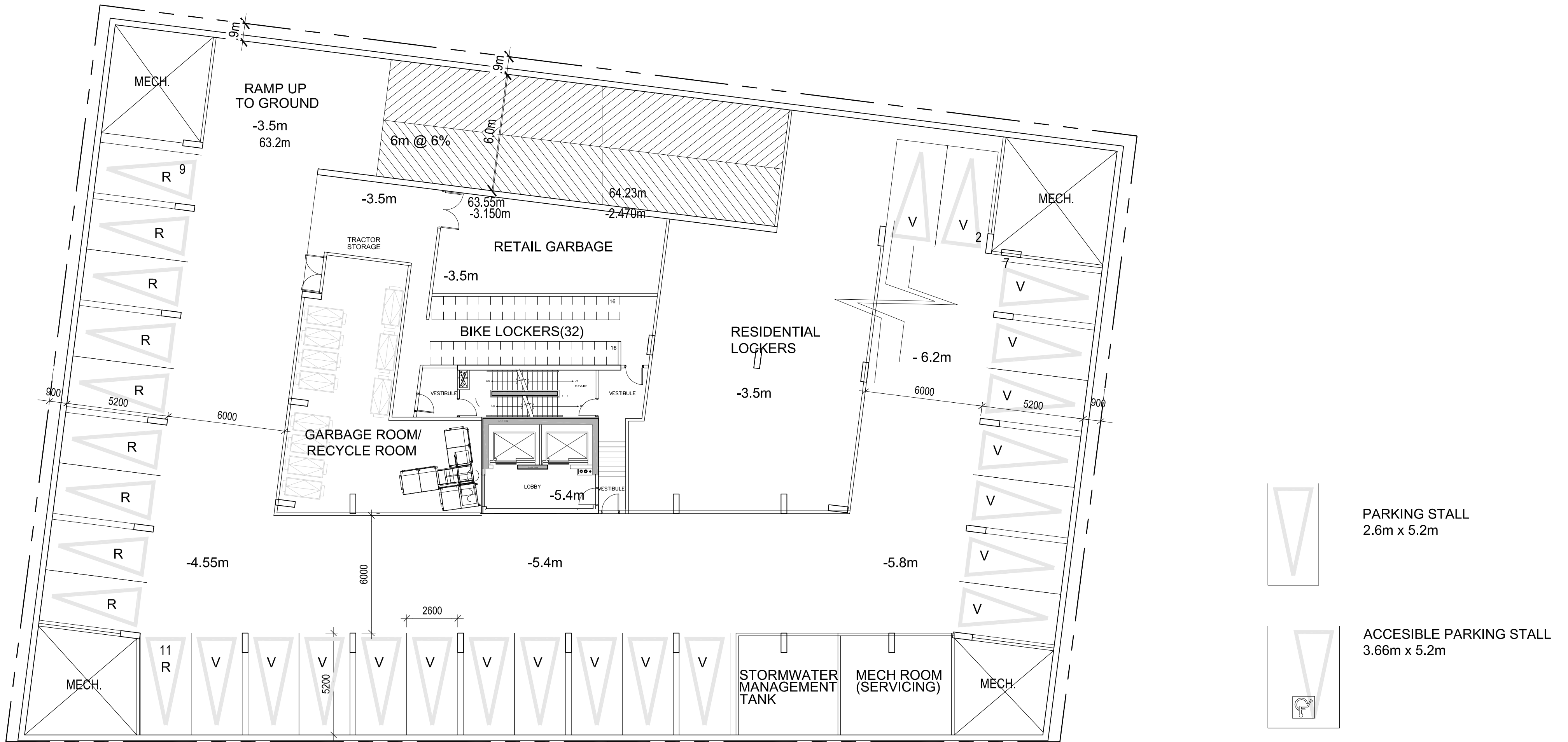


**1451 WELLINGTON AVE,
OTTAWA, ONTARIO**
GROUND FLOOR PLAN
ISSUED FOR REZONING/SITEPLAN APPROVAL NOV 01- 2013

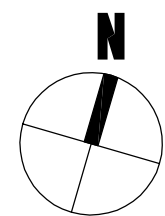
PROJECT NO. 31643
SCALE 1:250



2

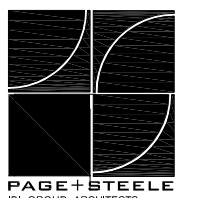


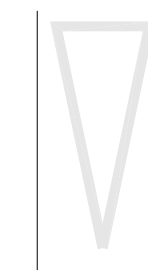
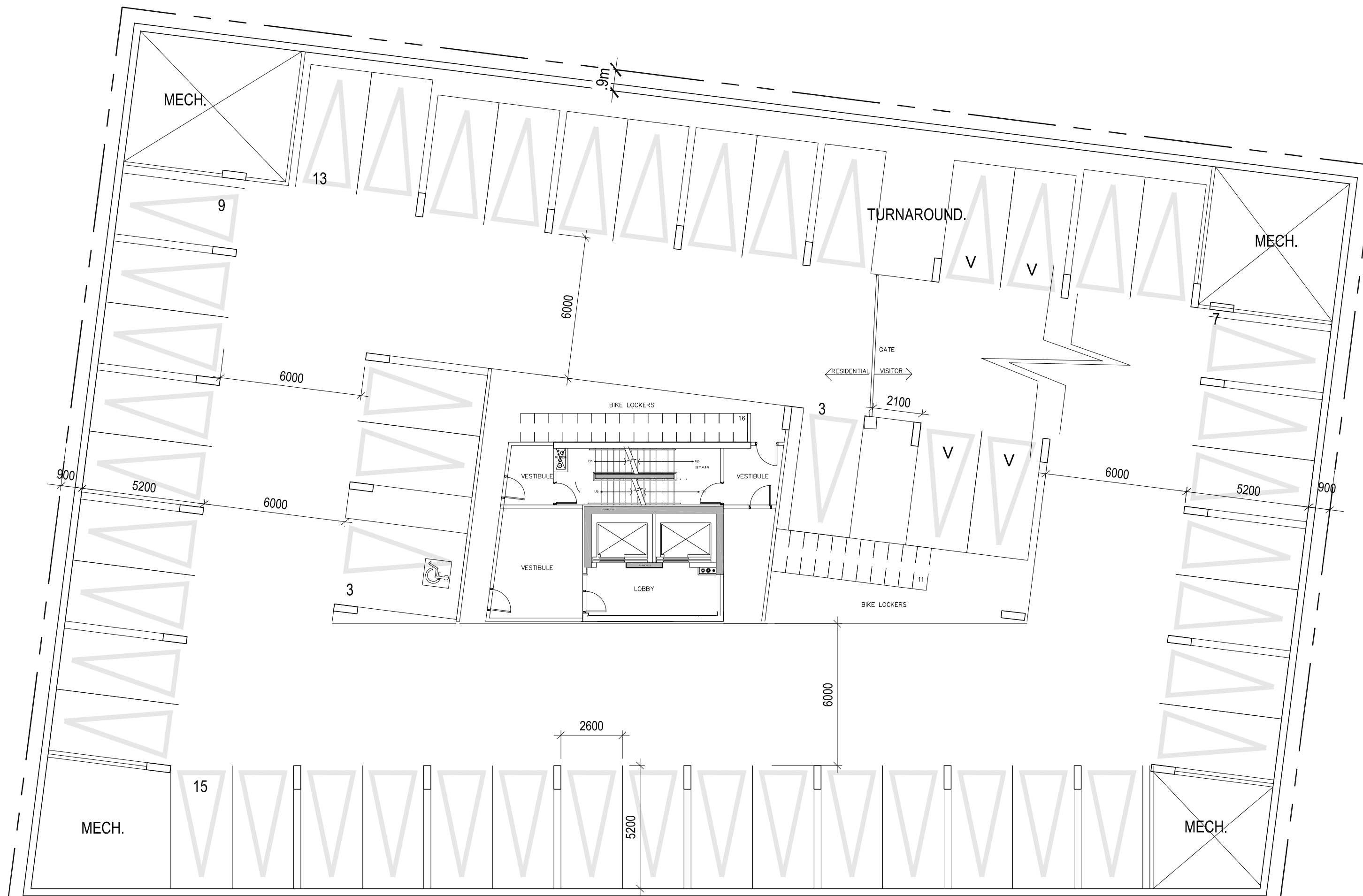
PARKING COUNT
 29 PARKING SPACES
 10 NON-RESIDENTIAL PARKING SPACES
 (including 7 RESTAURANT AND 3 RETAIL PARKING SPACES)
 19 VISITOR PARKING SPACES



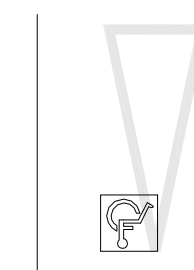
**1451 WELLINGTON AVE,
 OTTAWA, ONTARIO**
P1 LEVEL FLOOR PLAN
 ISSUED FOR REZONING/SITEPLAN APPROVAL NOV 01- 2013

PROJECT NO. 31643
 SCALE 1:150



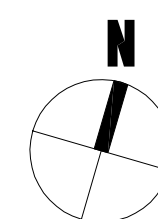


PARKING STALL
2.6m x 5.2m



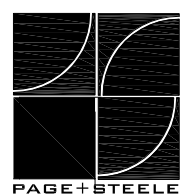
ACCESSIBLE PARKING STALL
3.66m x 5.2m

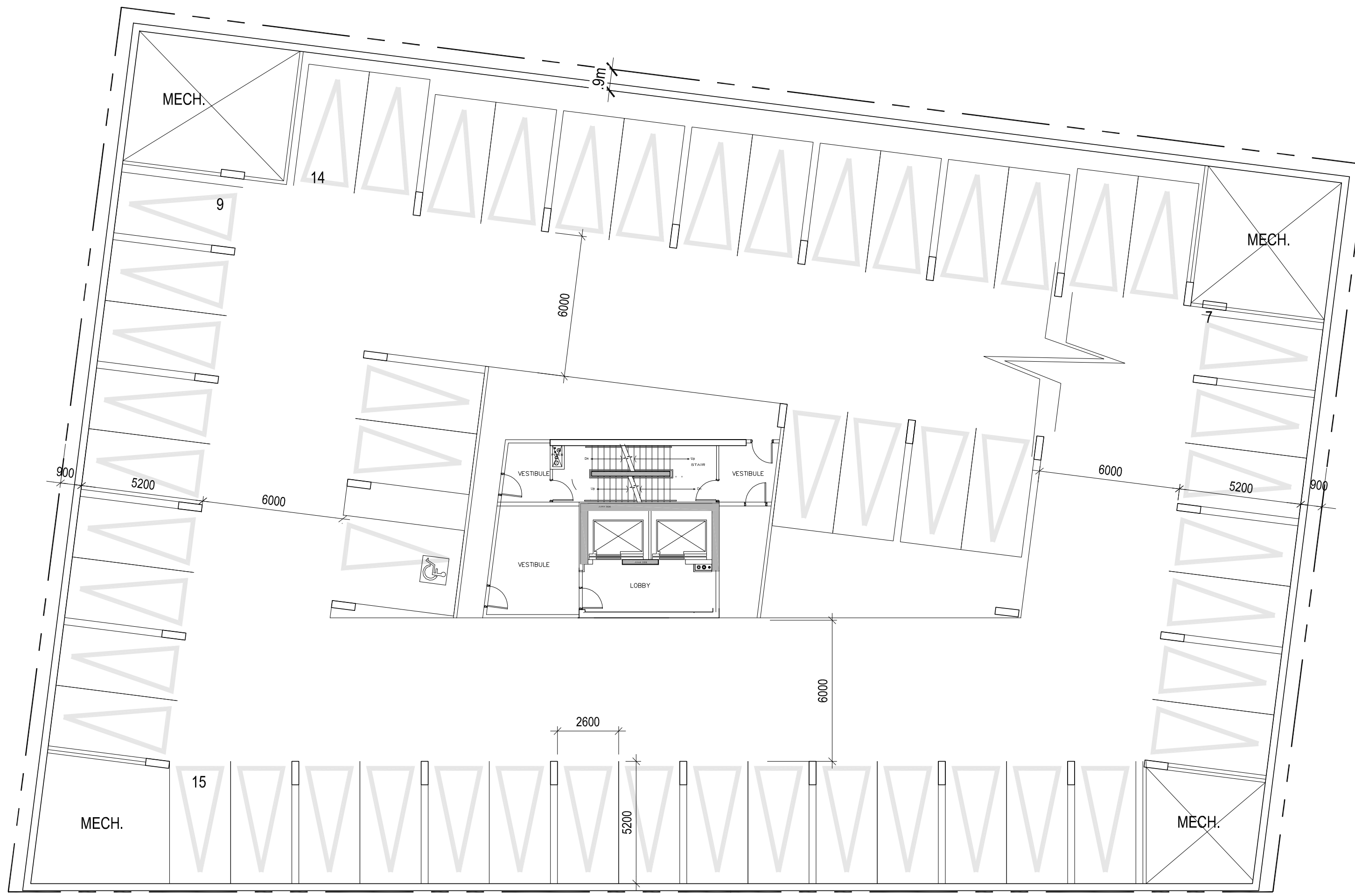
PARKING COUNT
 50 PARKING SPACES
 4 VISITOR PARKING SPACES
 46 RESIDENT PARKING SPACES
 (including 1 ACCESSIBLE SPACES)
 27 BIKE PARKING SPACES



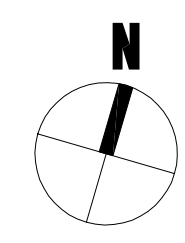
**1451 WELLINGTON AVE,
 OTTAWA, ONTARIO**
P2 LEVEL FLOOR PLAN
 ISSUED FOR REZONING/SITEPLAN APPROVAL NOV 01-2013

PROJECT NO. 31643
 SCALE 1:150





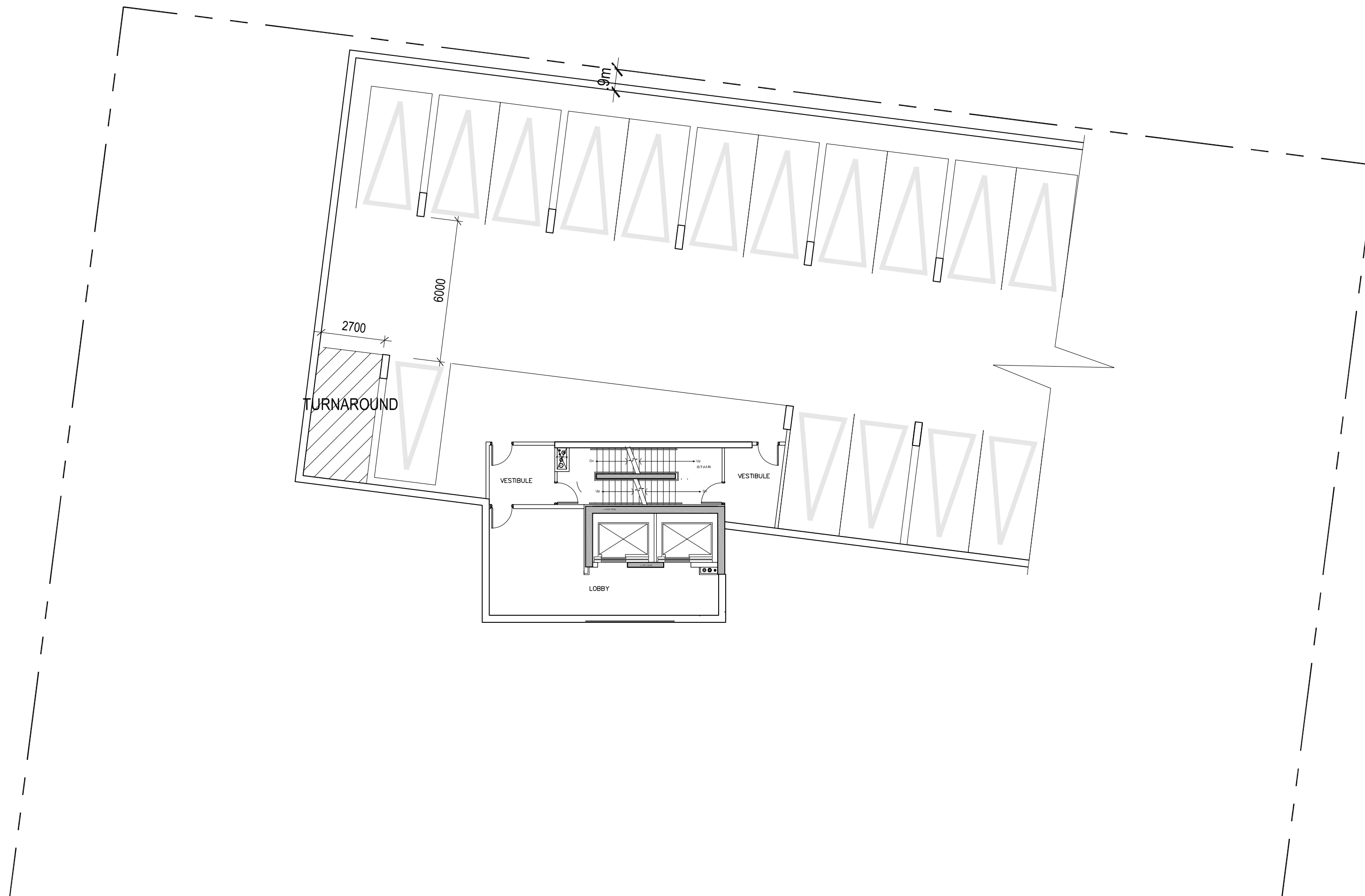
PARKING COUNT
52 RESIDENT PARKING SPACES
 (including 1 ACCESSIBLE SPACES)



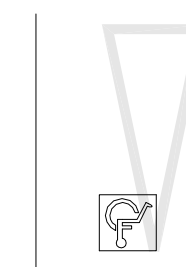
1451 WELLINGTON AVE,
OTTAWA, ONTARIO
P3 LEVEL FLOOR PLAN
 ISSUED FOR REZONING/SITEPLAN APPROVAL NOV 01-2013

PROJECT NO. 31643
 SCALE 1:150



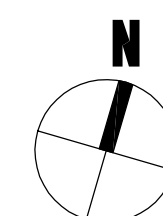


PARKING STALL
2.6m x 5.2m



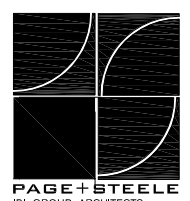
ACCESIBLE PARKING STALL
3.66m x 5.2m

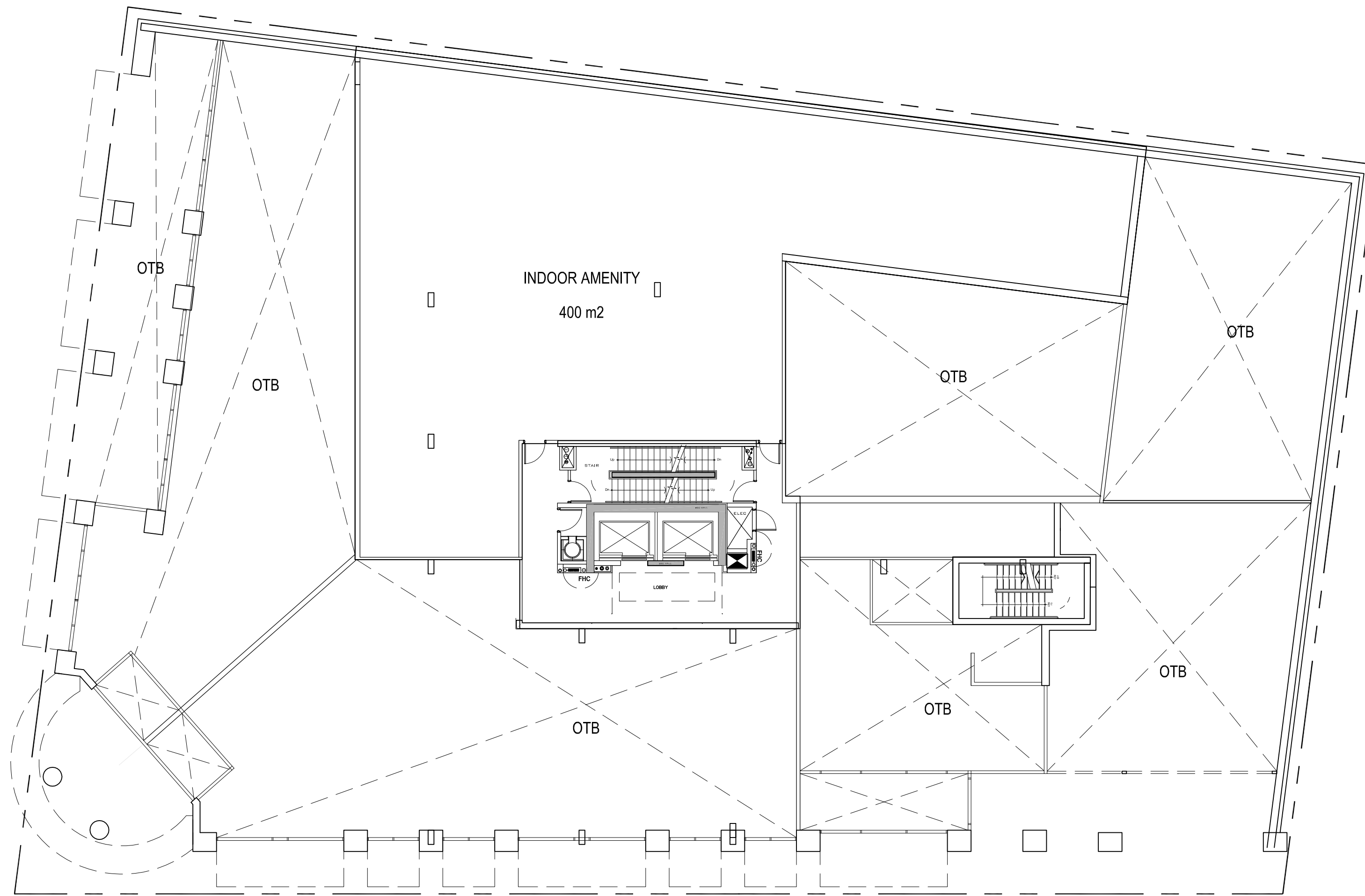
PARKING COUNT
16 RESIDENT PARKING SPACES



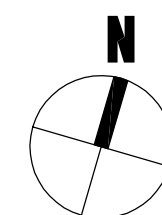
**1451 WELLINGTON AVE,
OTTAWA, ONTARIO**
P4 LEVEL FLOOR PLAN
ISSUED FOR REZONING/SITEPLAN APPROVAL NOV 01- 2013

PROJECT NO. 31643
SCALE 1:150



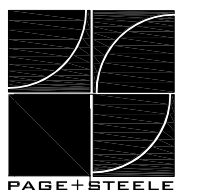


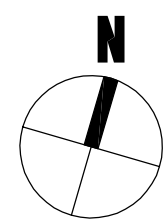
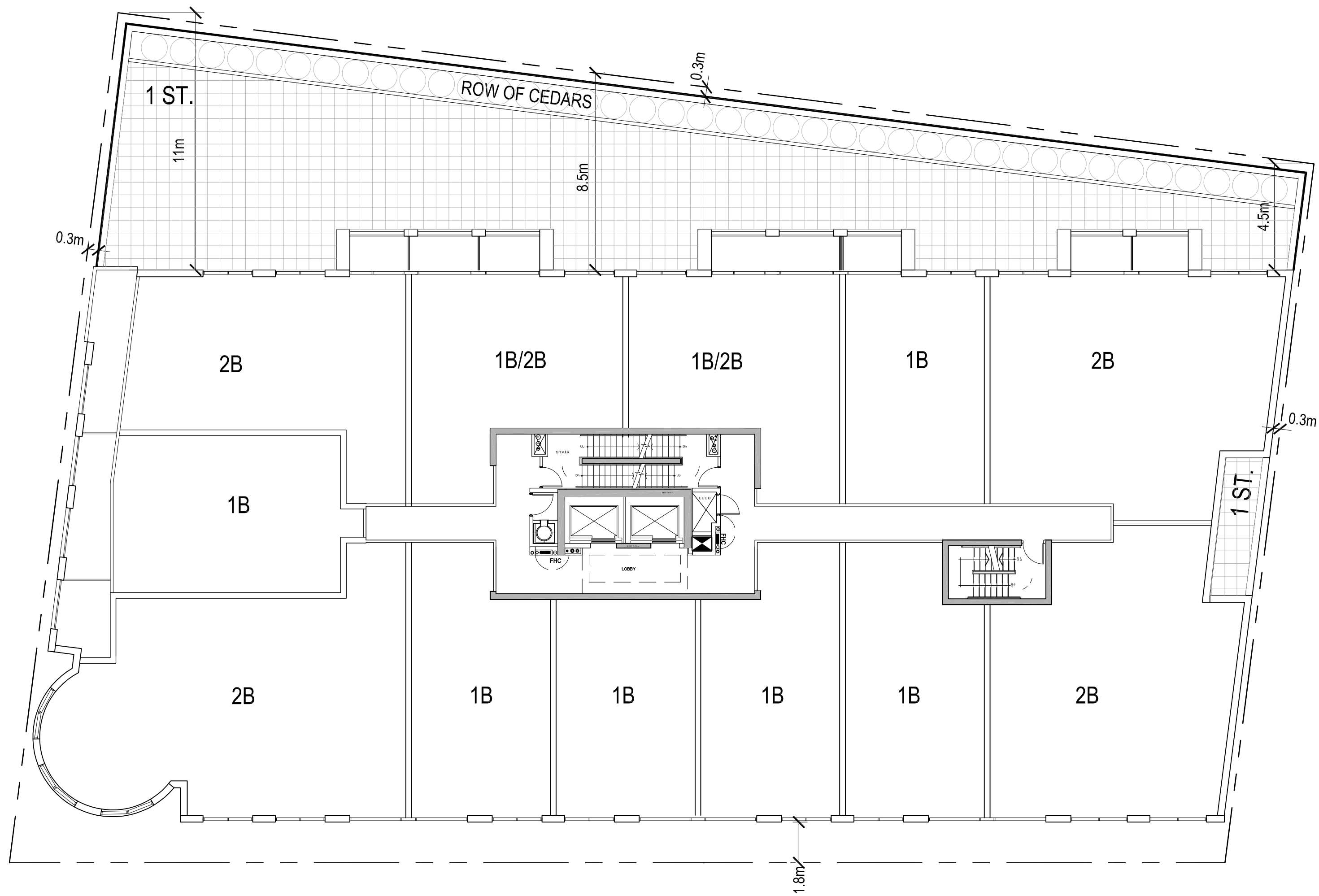
MEZZ FLOOR



**1451 WELLINGTON AVE,
OTTAWA, ONTARIO**
MEZZANINE FLOOR PLAN
 ISSUED FOR REZONING/SITEPLAN APPROVAL NOV 01- 2013

PROJECT NO. 31643
 SCALE 1:250

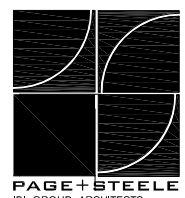


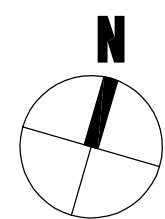
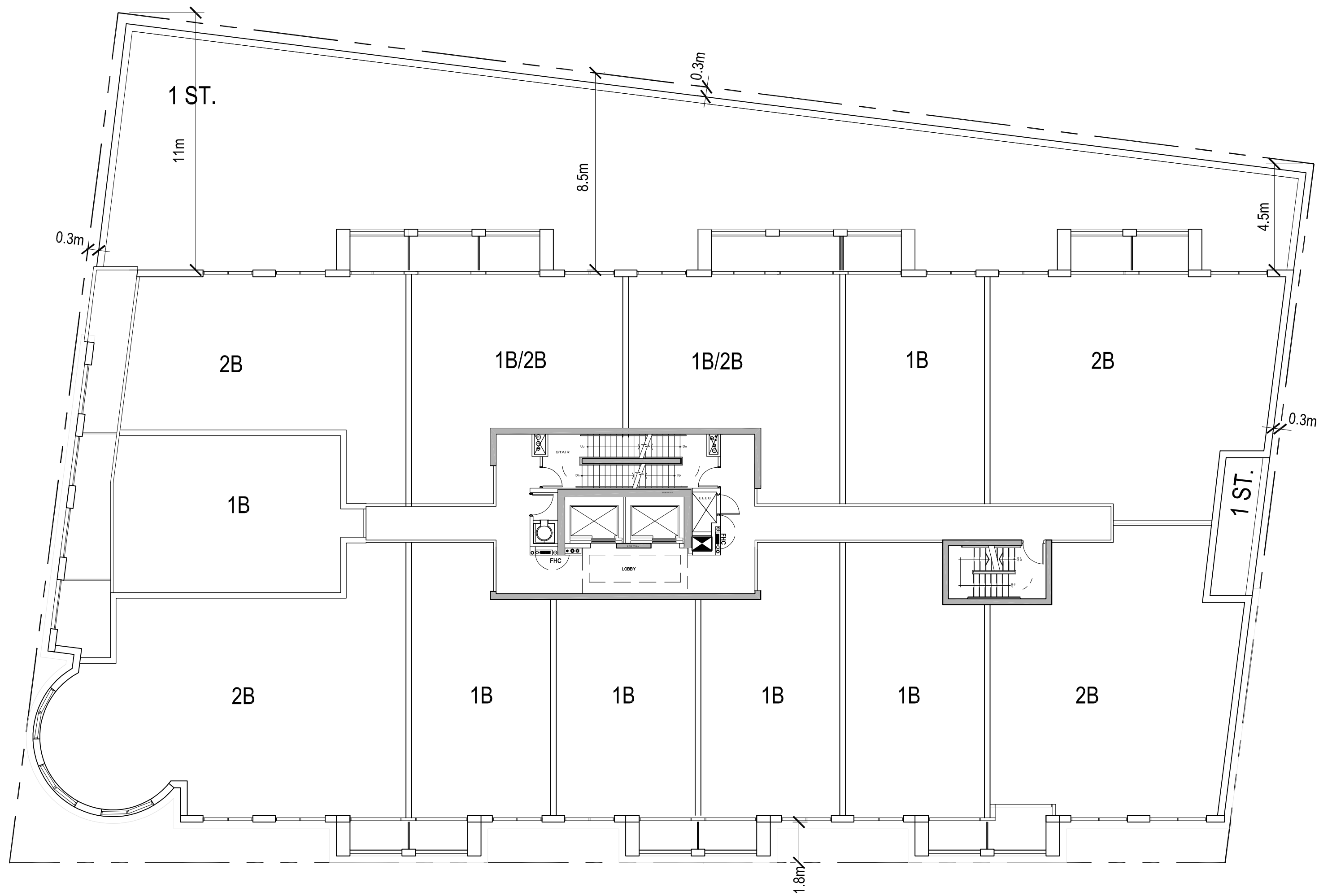


**1451 WELLINGTON AVE,
OTTAWA, ONTARIO
2nd FLOOR PLAN**

ISSUED FOR REZONING/SITEPLAN APPROVAL NOV 01- 2013

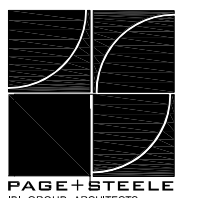
PROJECT NO. 31643
SCALE 1:250

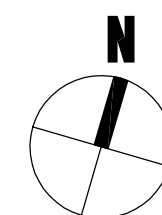
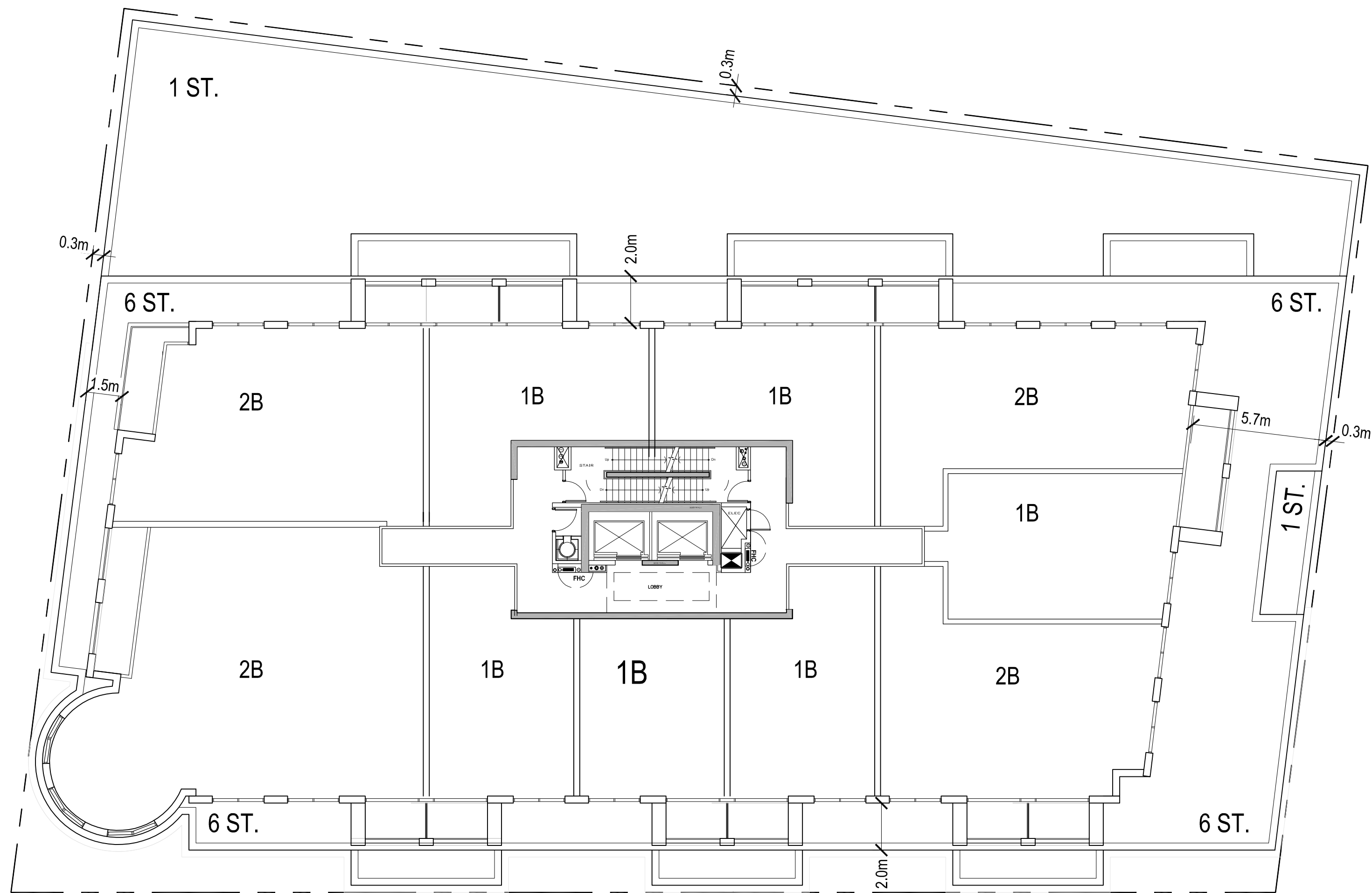




1451 WELLINGTON AVE,
OTTAWA, ONTARIO
3rd-6th FLOOR PLAN
 ISSUED FOR REZONING/SITEPLAN APPROVAL NOV 01- 2013

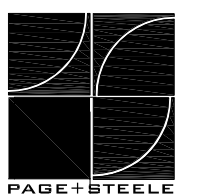
PROJECT NO. 31643
 SCALE 1:250



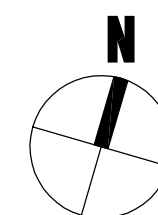
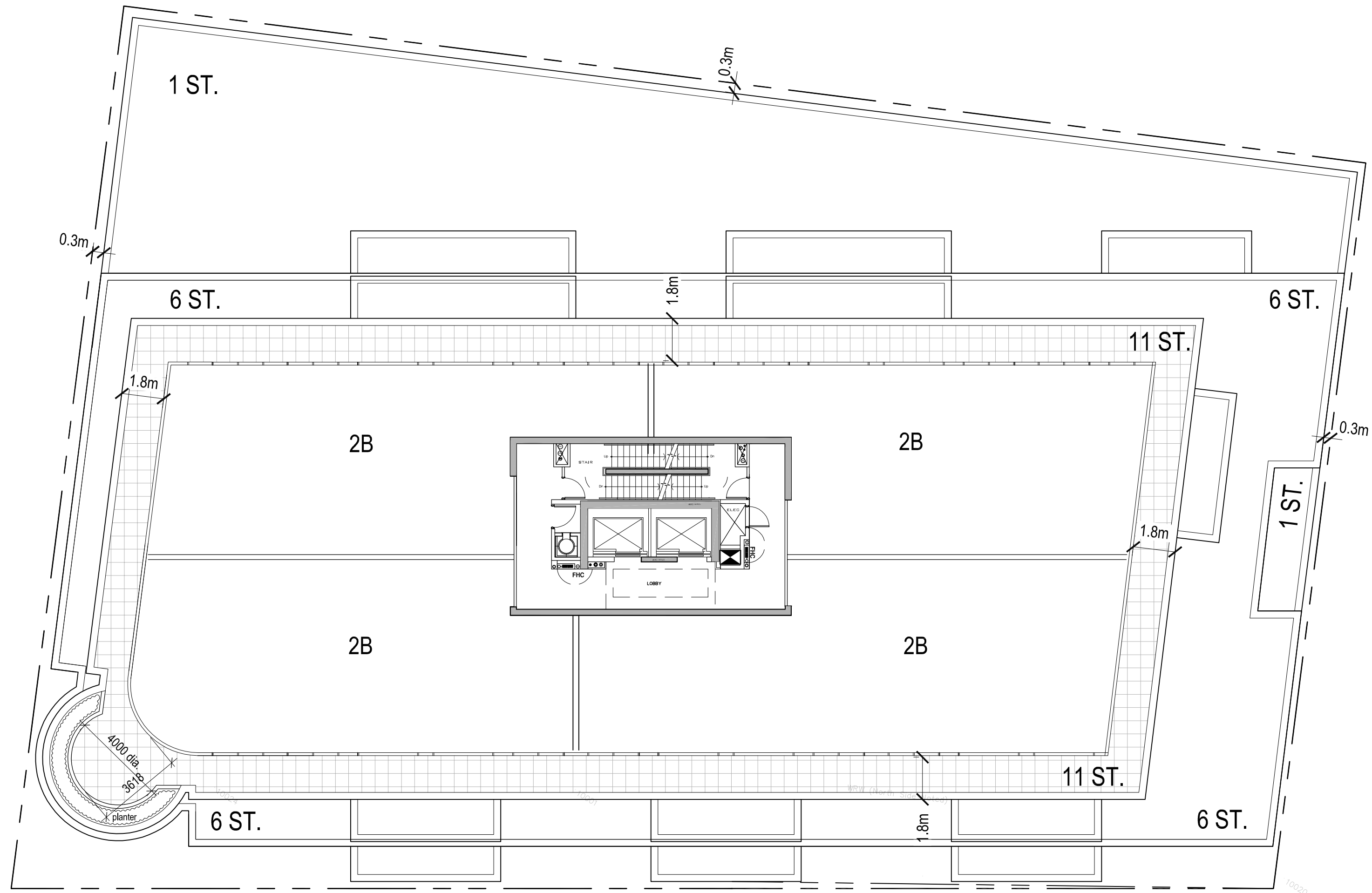


1451 WELLINGTON AVE,
OTTAWA, ONTARIO
7th-11th FLOOR PLAN
 ISSUED FOR REZONING/SITEPLAN APPROVAL NOV 01- 2013

PROJECT NO. 31643
 SCALE 1:250



10



1451 WELLINGTON AVE,
OTTAWA, ONTARIO
12th FLOOR PLAN
 ISSUED FOR REZONING/SITEPLAN APPROVAL NOV 01- 2013

PROJECT NO. 31643
 SCALE 1:250



11