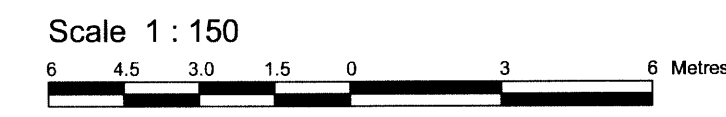


**TOPOGRAPHICAL PLAN OF  
ALL OF LOT 1, 2, 3 AND  
PART OF LOT 4  
North Richmond Road  
REGISTERED PLAN 145  
CITY OF OTTAWA**

Prepared by Annis, O'Sullivan, Vollebek Ltd.



**Metric**  
DISTANCES SHOWN ON THIS PLAN ARE IN METRES AND  
CAN BE CONVERTED TO FEET BY DIVIDING BY 0.3048

Date: April 12, 2013  
E.H. Herweyer O.L.S.

**Notes & Legend**

	Denotes	Deciduous Tree
		Coniferous Tree
		Fire Hydrant
		Water Valve
		Maintenance Hole (Storm Sewer)
		Maintenance Hole (Sanitary)
		Maintenance Hole (Bell Telephone)
		Maintenance Hole (Traffic)
		Valve Chamber (Watermain)
		Underground Storm Sewer
		Underground Sanitary Sewer
		Underground Water
		Underground Power
		Underground Gas
		Underground Traffic
		Overhead Wires
		Catch Basin
		Catch Basin Inlet
		Gas Meter
		Handhole
		Bollard
		Sign
		Board Fence
		Metal Fence
		Hand Rail
		Concrete Retaining Wall
		Stone Retaining Wall
		Metal Pole
		Wooden Pole
		Utility Pole
		Anchor
		Light Standard
		Air Conditioner
		Diameter
		Location of Elevations
		Location of Elevations (Top of Curb/Retaining Wall)
		Top of Grate
		Centreline
		Invert
		Property Line
		Wooden Retaining Wall
		Movable Curb

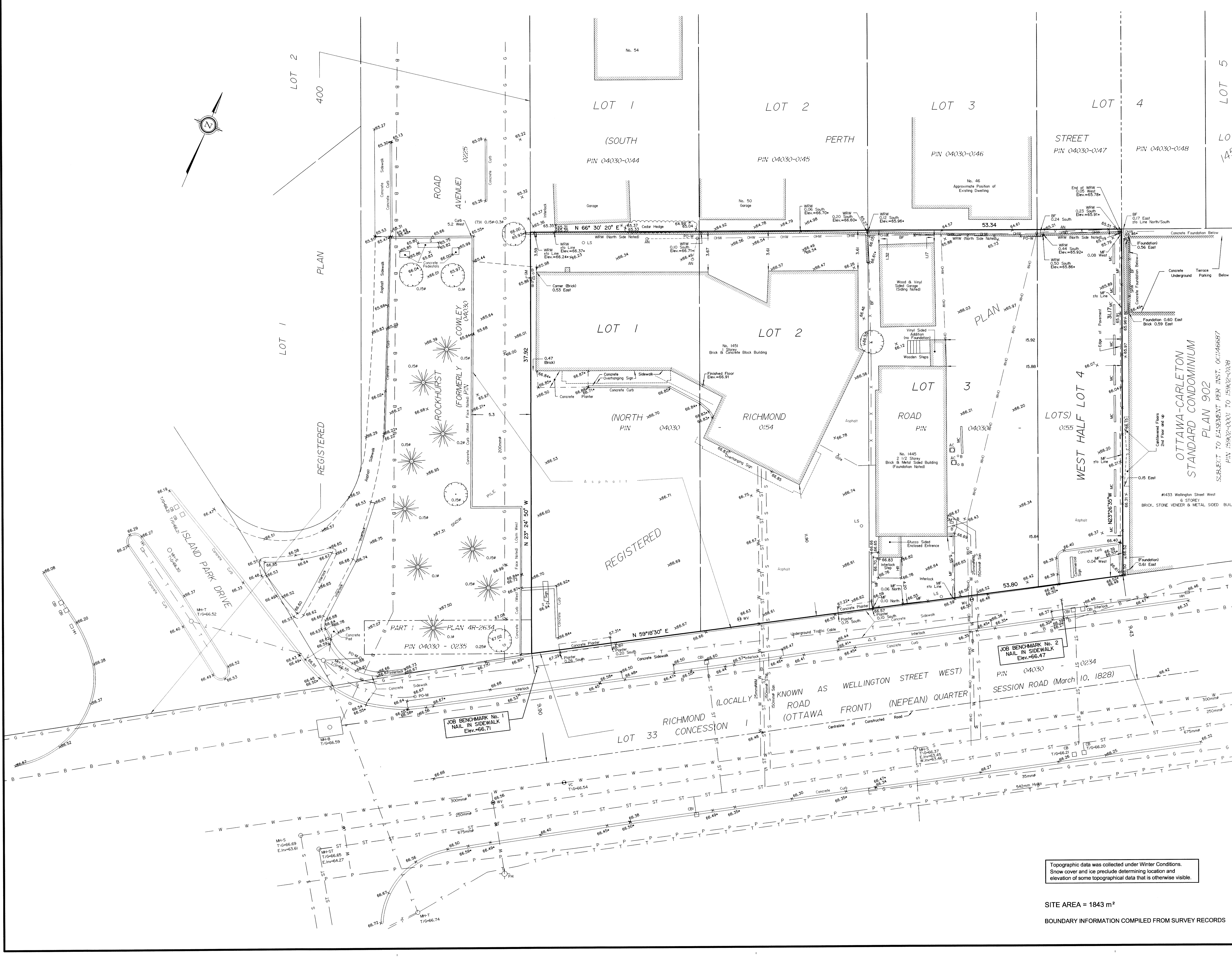
**ELEVATION NOTES**  
1. Elevations shown are referred to geoidic datum.  
2. It is the responsibility of the user of this information to verify that the job benchmark has not been altered or disturbed and that its relative elevation and description agrees with the information shown on this drawing.

**UTILITY NOTES**  
1. This drawing cannot be accepted as acknowledging all of the utilities and it will be the responsibility of the user to contact the respective utility authorities for confirmation.  
2. Only visible surface utilities were located.  
3. A field location of underground plan by the pertinent utility authority is mandatory before any work involving breaking ground, probing, excavating etc.  
4. Underground utility services and inverts are taken from City of Ottawa Engineering Drawings E-06-12, 055042-12 Sheet 12 of 39 and 055042-13 Sheet 13 of 39.

Topographic data was collected under Winter Conditions.  
Snow cover and ice preclude determining location and elevation of some topographical data that is otherwise visible.

SITE AREA = 1843 m<sup>2</sup>  
BOUNDARY INFORMATION COMPILED FROM SURVEY RECORDS

ANNIS, O'SULLIVAN, VOLLEBEK LTD.  
14 Concourse Gate, Suite 500  
Nepean, Ont. K2E 7S6  
Phone: (613) 727-0850 / Fax: (613) 727-1079  
Email: nepean@annis.com  
Job No. 13977-13, Ottawa, Lts. 1-4, Pl. 145, T.F.



Y:\2013\13977-13\13977-13.dwg (1:1) 145 T.F. Annis, O'Sullivan, Vollebek Ltd. 13/04/2013 10:02 AM, 145 T.F. Annis, O'Sullivan, Vollebek Ltd. 13/04/2013 10:02 AM