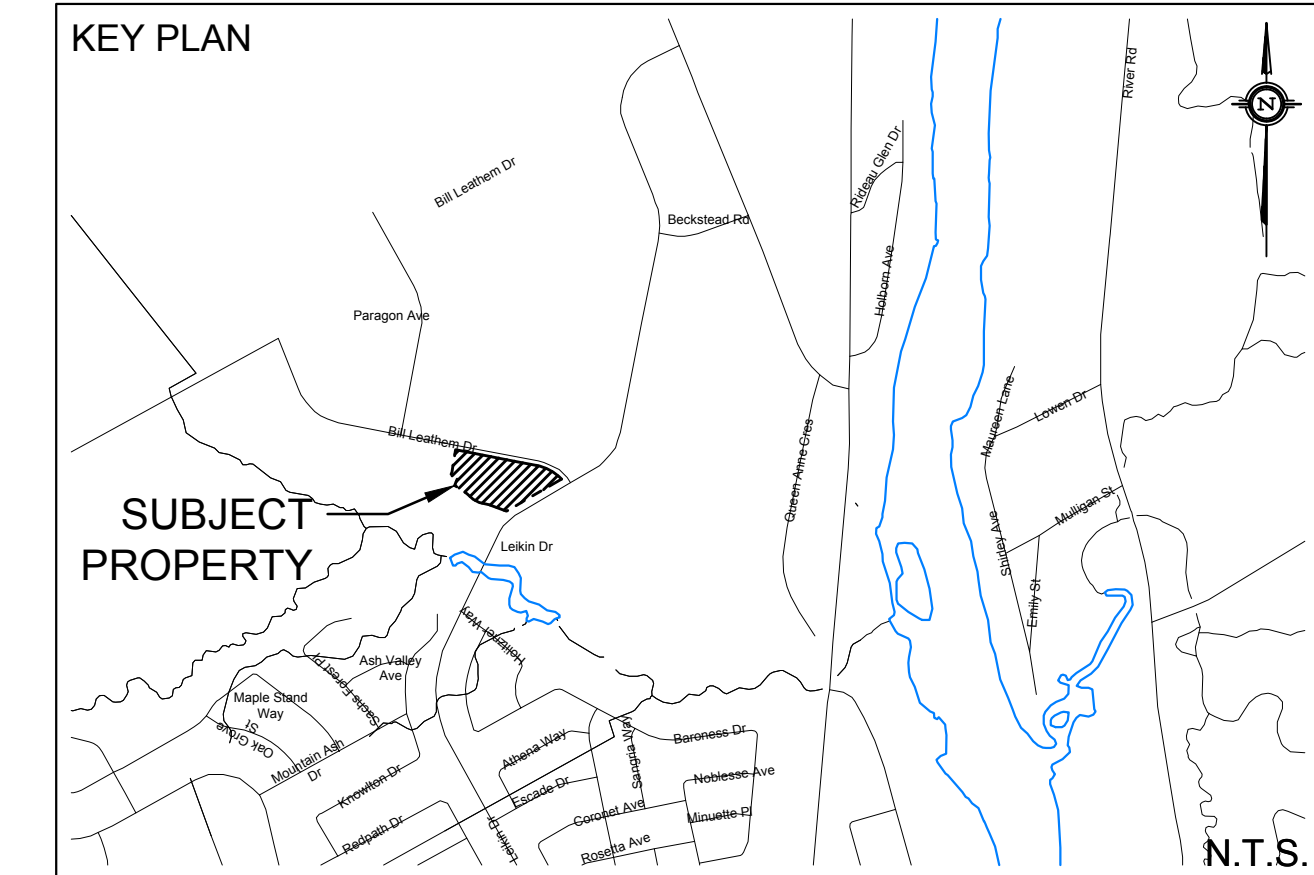


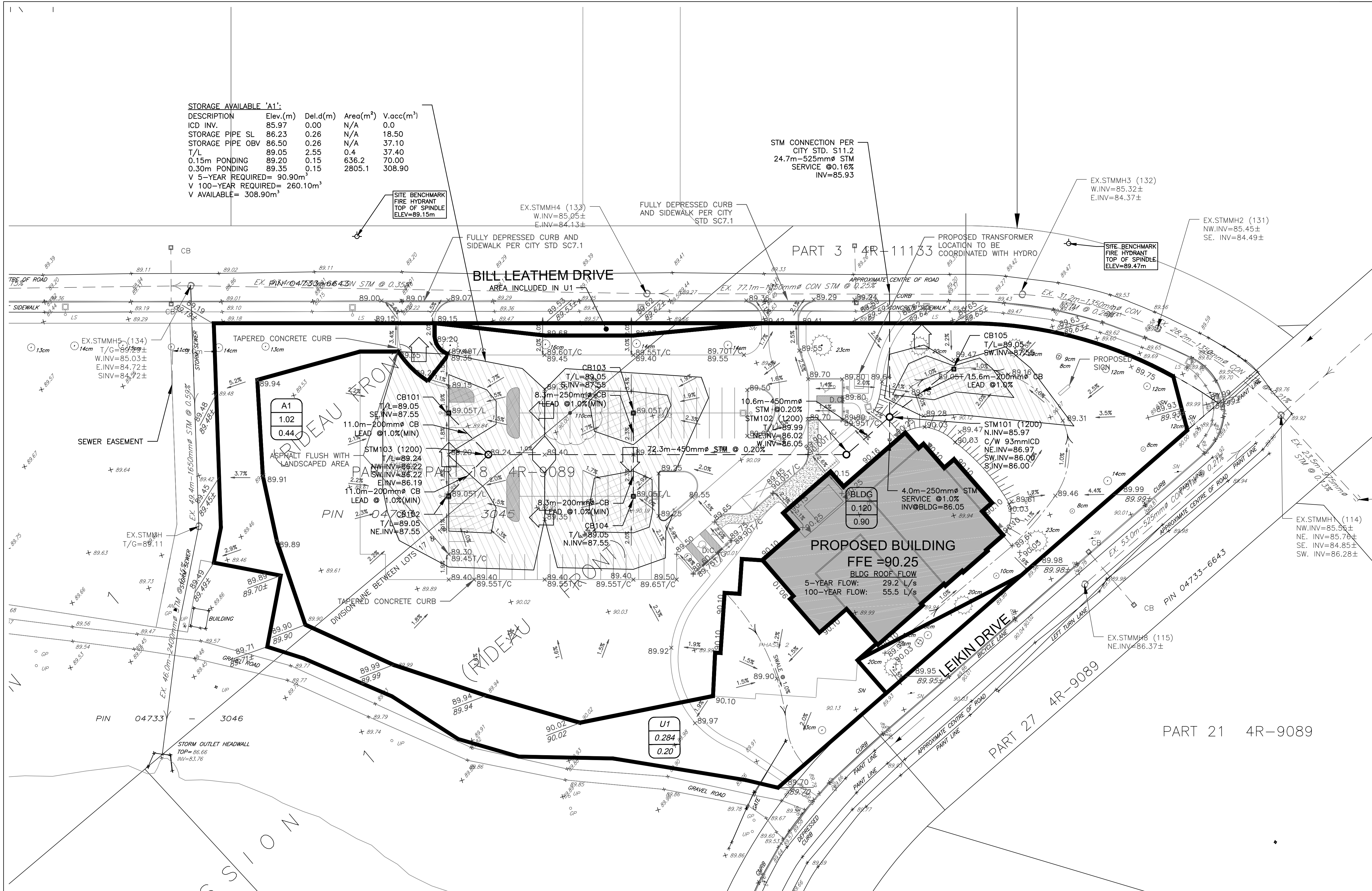
STORAGE AVAILABLE 'A1':

DESCRIPTION	Elev.(m)	Del.d(m)	Area(m ²)	V.acc(m ³)
ICD INV.	85.97	0.00	N/A	0.0
STORAGE PIPE SL	86.23	0.26	N/A	18.50
STORAGE PIPE OBV	86.50	0.26	N/A	37.10
T/L	89.05	2.55	0.4	37.40
0.15m PONDING	89.20	0.15	636.2	70.00
0.30m PONDING	89.35	0.15	2805.1	308.90
V 5-YEAR REQUIRED=	90.90m ³			
V 100-YEAR REQUIRED=	260.10m ³			
V AVAILABLE=	308.90m ³			



LEGEND

- PROPERTY LINE
- - - PROPOSED STORM SEWER
- - - DRAINAGE DIVIDE
- - - PROPOSED SWALE
- - - PROPOSED PERFORATED SUBDRAIN
- MAJOR SYSTEM FLOW ROUTE
- EX6
- 4.010
- 0.19
- DRAINAGE AREA ID
- AREA IN HO
- RATIONAL METHOD RUNOFF COEFFICIENT
- SURFACE PONDING AREA
- MAX PONDING
- INTERMEDIATE PONDING
- PROPOSED STORM MANHOLE
- PROPOSED CATCH BASIN
- PROPOSED CB 'T'



NOT FOR CONSTRUCTION

TOPOGRAPHIC INFORMATION
 TOPOGRAPHIC INFORMATION PROVIDED BY STANTEC GEOMATICS INC.
 PROJ. NO. 161613463-111
 DATED FEBRUARY 29, 2016

SITE PLAN INFORMATION
 SITE PLAN PROVIDED BY VANDENBERG & WILDEBOER ARCHITECTS
 PROJ. NO. 1502
 DATED APRIL 12, 2016

GEOTECHNICAL STUDY
 GEOTECHNICAL RECOMMENDATIONS PROVIDED BY PATERSON GROUP INC.
 PROJ. NO. PG3792-1
 DATED APRIL 6, 2016

SITE SERVICING AND STORMWATER MANAGEMENT STUDY
 SERVICING AND STORMWATER MANAGEMENT RECOMMENDATIONS PROVIDED BY DSEL
 PROJ. NO. 16-855
 DATED APRIL 12, 2016

BENCH MARK
 TOP OF SPINDLE OF FIRE HYDRANT LOCATED NORTH EAST OF SITE
 ELEV=89.47
 TOP OF SPINDLE OF FIRE HYDRANT LOCATED NORTH WEST OF SITE
 ELEV=89.15

No.	BY	YY.MM.DD	DESCRIPTION
1	A.J.G.	16.04.19	ISSUED FOR MUNICIPAL REVIEW



PROJECT No. 16-855

STORMWATER MANAGEMENT PLAN
 102 BILL LEATHEN DRIVE © DSEL

THE SALVATION ARMY BARRHAVEN CHURCH
 2 Overlea Boulevard
 Toronto, Ontario, M4H 1P4

DSEL
 david schaeffer engineering ltd
 SMART SUBDIVISIONS™

120 Iker Road Unit 103
 Stittsville, Ontario, K2S 1E9
 Tel. (613) 836-0856
 Fax. (613) 836-7183
 www.DSEL.ca

DRAWN BY: A.J.G. CHECKED BY: R.D.F. DRAWING NO. SHEET NO.
 DESIGNED BY: R.D.F. CHECKED BY: A.D.F.
 SCALE: 1:400 DATE: APRIL 2016 SWM-1 1 of 2

