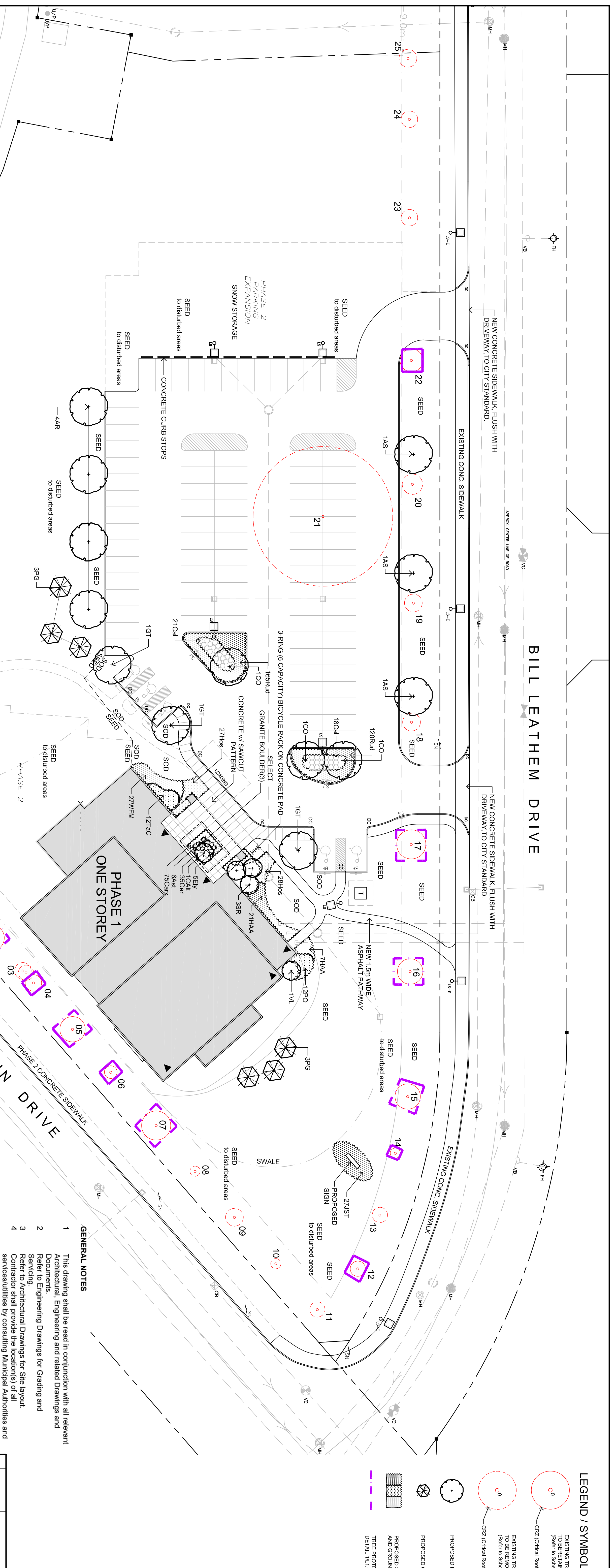
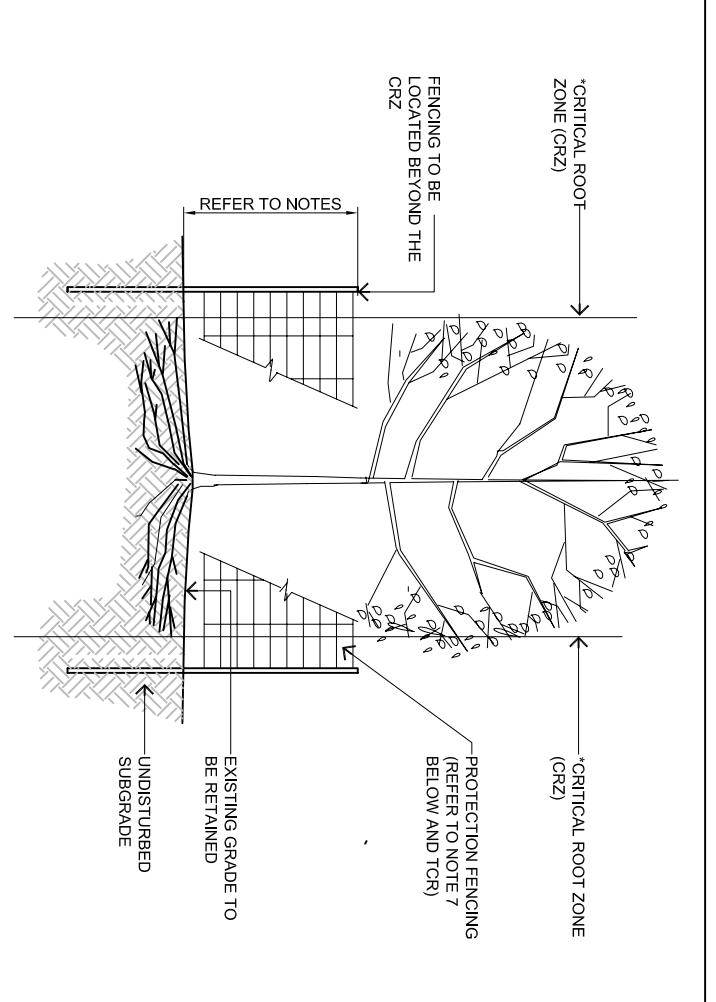


**LEGEND / SYMBOL**

- EXISTING TREE TO BE RETAINED (Refer to Schedule)
- CRZ (Critical Road Zone)
- PROPOSED DECIDUOUS TREE
- PROPOSED CONIFEROUS TREE
- PROPOSED SHRUBS AND GROUNDCOVER
- TREE PROTECTION BARRIER DETAIL (1:1.5)



SCALE 1:300  
0 5 10 15 20m



**NOTES:**

1. THE CRITICAL ROOT ZONE (CRZ) IS ESTABLISHED AS BEING 75% OF THE DISTANCE FROM THE TRUNK TO THE CENTER OF THE CANOPY.
2. THE CRZ IS TO BE PROTECTED BY A PROTECTION FENCING SYSTEM AS SHOWN IN THE DRAWING.
3. THE PROTECTION FENCING SHALL BE 1.8M HIGH AND SHALL BE MADE OF 1.8M HIGH VIBRANT PLASTIC OR METAL PIPE WITH 1.8M HIGH VIBRANT PLASTIC OR METAL POSTS.
4. THE PROTECTION FENCING SHALL BE 1.8M HIGH AND SHALL BE MADE OF 1.8M HIGH VIBRANT PLASTIC OR METAL PIPE WITH 1.8M HIGH VIBRANT PLASTIC OR METAL POSTS.
5. THE PROTECTION FENCING SHALL BE 1.8M HIGH AND SHALL BE MADE OF 1.8M HIGH VIBRANT PLASTIC OR METAL PIPE WITH 1.8M HIGH VIBRANT PLASTIC OR METAL POSTS.
6. THE PROTECTION FENCING SHALL BE 1.8M HIGH AND SHALL BE MADE OF 1.8M HIGH VIBRANT PLASTIC OR METAL PIPE WITH 1.8M HIGH VIBRANT PLASTIC OR METAL POSTS.
7. THE PROTECTION FENCING SHALL BE 1.8M HIGH AND SHALL BE MADE OF 1.8M HIGH VIBRANT PLASTIC OR METAL PIPE WITH 1.8M HIGH VIBRANT PLASTIC OR METAL POSTS.
8. THE PROTECTION FENCING SHALL BE 1.8M HIGH AND SHALL BE MADE OF 1.8M HIGH VIBRANT PLASTIC OR METAL PIPE WITH 1.8M HIGH VIBRANT PLASTIC OR METAL POSTS.
9. THE PROTECTION FENCING SHALL BE 1.8M HIGH AND SHALL BE MADE OF 1.8M HIGH VIBRANT PLASTIC OR METAL PIPE WITH 1.8M HIGH VIBRANT PLASTIC OR METAL POSTS.
10. THE PROTECTION FENCING SHALL BE 1.8M HIGH AND SHALL BE MADE OF 1.8M HIGH VIBRANT PLASTIC OR METAL PIPE WITH 1.8M HIGH VIBRANT PLASTIC OR METAL POSTS.
11. THE PROTECTION FENCING SHALL BE 1.8M HIGH AND SHALL BE MADE OF 1.8M HIGH VIBRANT PLASTIC OR METAL PIPE WITH 1.8M HIGH VIBRANT PLASTIC OR METAL POSTS.
12. THE PROTECTION FENCING SHALL BE 1.8M HIGH AND SHALL BE MADE OF 1.8M HIGH VIBRANT PLASTIC OR METAL PIPE WITH 1.8M HIGH VIBRANT PLASTIC OR METAL POSTS.
13. THE PROTECTION FENCING SHALL BE 1.8M HIGH AND SHALL BE MADE OF 1.8M HIGH VIBRANT PLASTIC OR METAL PIPE WITH 1.8M HIGH VIBRANT PLASTIC OR METAL POSTS.
14. THE PROTECTION FENCING SHALL BE 1.8M HIGH AND SHALL BE MADE OF 1.8M HIGH VIBRANT PLASTIC OR METAL PIPE WITH 1.8M HIGH VIBRANT PLASTIC OR METAL POSTS.
15. THE PROTECTION FENCING SHALL BE 1.8M HIGH AND SHALL BE MADE OF 1.8M HIGH VIBRANT PLASTIC OR METAL PIPE WITH 1.8M HIGH VIBRANT PLASTIC OR METAL POSTS.
16. THE PROTECTION FENCING SHALL BE 1.8M HIGH AND SHALL BE MADE OF 1.8M HIGH VIBRANT PLASTIC OR METAL PIPE WITH 1.8M HIGH VIBRANT PLASTIC OR METAL POSTS.
17. THE PROTECTION FENCING SHALL BE 1.8M HIGH AND SHALL BE MADE OF 1.8M HIGH VIBRANT PLASTIC OR METAL PIPE WITH 1.8M HIGH VIBRANT PLASTIC OR METAL POSTS.
18. THE PROTECTION FENCING SHALL BE 1.8M HIGH AND SHALL BE MADE OF 1.8M HIGH VIBRANT PLASTIC OR METAL PIPE WITH 1.8M HIGH VIBRANT PLASTIC OR METAL POSTS.
19. THE PROTECTION FENCING SHALL BE 1.8M HIGH AND SHALL BE MADE OF 1.8M HIGH VIBRANT PLASTIC OR METAL PIPE WITH 1.8M HIGH VIBRANT PLASTIC OR METAL POSTS.
20. THE PROTECTION FENCING SHALL BE 1.8M HIGH AND SHALL BE MADE OF 1.8M HIGH VIBRANT PLASTIC OR METAL PIPE WITH 1.8M HIGH VIBRANT PLASTIC OR METAL POSTS.
21. THE PROTECTION FENCING SHALL BE 1.8M HIGH AND SHALL BE MADE OF 1.8M HIGH VIBRANT PLASTIC OR METAL PIPE WITH 1.8M HIGH VIBRANT PLASTIC OR METAL POSTS.
22. THE PROTECTION FENCING SHALL BE 1.8M HIGH AND SHALL BE MADE OF 1.8M HIGH VIBRANT PLASTIC OR METAL PIPE WITH 1.8M HIGH VIBRANT PLASTIC OR METAL POSTS.
23. THE PROTECTION FENCING SHALL BE 1.8M HIGH AND SHALL BE MADE OF 1.8M HIGH VIBRANT PLASTIC OR METAL PIPE WITH 1.8M HIGH VIBRANT PLASTIC OR METAL POSTS.
24. THE PROTECTION FENCING SHALL BE 1.8M HIGH AND SHALL BE MADE OF 1.8M HIGH VIBRANT PLASTIC OR METAL PIPE WITH 1.8M HIGH VIBRANT PLASTIC OR METAL POSTS.
25. THE PROTECTION FENCING SHALL BE 1.8M HIGH AND SHALL BE MADE OF 1.8M HIGH VIBRANT PLASTIC OR METAL PIPE WITH 1.8M HIGH VIBRANT PLASTIC OR METAL POSTS.

**SCHEDULE OF EXISTING TREES**  
(Inventory conducted March 29, 2016)

CODE	SPECIES	SIZE (dia in cm)	CONDITION / TREATMENT / REMARKS
01	Ash	13	dead / remove
02	Colorado Spruce	20	good / retain / protect
03	Manitoba Maple (double-stem)	13/12	good / retain / remove to promote growth of adjacent
04	Sugar Maple	13	good / retain / protect
05	Colorado Spruce	20	good / retain / protect
06	Colorado Spruce	10	good / retain / protect
07	Ash	8	dead / remove /
08	Ash	14	dead / remove /
09	Ash	8	dead / remove /
10	Ash	14	dead / remove /
11	Ash	12	good / retain / protect
12	Sugar Maple	12	good / retain / protect
13	Ash	9	poor / retain / protect
14	Sugar Maple	20	good / retain / protect
15	Austrian Pine	20	good / retain / protect
16	Austrian Pine	23	good / retain / protect
17	Austrian Pine	23	good / retain / protect
18	Ash	14	dead / remove /
19	Ash	16	dead / remove /
20	Ash	16	dead / EAB infected / top crown dying / remove /
21	Ash	20	hazardous
22	Colorado Spruce	20	good / retain / protect
23	Ash	13	dead / remove /
24	Ash	13	dead / remove /
25	Ash	14	dead / remove /

**PLANT MATERIAL SCHEDULE**

CODE	BOTANICAL NAME	COMMON NAME	QTY.	SIZE	REMARKS
<b>DECIDUOUS TREES</b>					
AR	AGER RUBRUM	RED MAPLE	4	60mm cal	B&B, single stem
AS	AGER SACCHARUM	SUGAR MAPLE	3	60mm cal	B&B, single stem
CO	GELTIS OCCIDENTALIS	COMMON HOCKBERRY	3	60mm cal	B&B, single stem
GT	SKUTLINA TRIANGULATISS	SKYLINE HONEYLOCUST	3	60mm cal	B&B, single stem
QR	QUERCUS RUBRA	RED OAK	1	60mm cal	B&B, single stem
<b>CONIFEROUS TREES</b>					
PG	PICEA GLAUCA	WHITE SPRUCE	6	180mm ht.	B&B
<b>DECIDUOUS SHRUBS</b>					
CAH	CORNUS ALTERNIFOLIA	PAGODA DOGWOOD	1	150mm ht.	B&B, multi-stem
HAA	ANNABELLE HYDRANGEA	ANNABELLE HYDRANGEA	28	50cm ht.	pottd., 100cm o/c
PO	HYDRANGEA ARBORESCENS	COMMON NINEBARK	12	50cm ht.	pottd., 100cm o/c
SR	STRANGLER OPLILIFOLIUS	JAPANESE FRET LILAC	3	150cm ht.	B&B, multi-stem
VI	VIBURNUM LENTAGO	NANNYBERRY	1	150cm ht.	B&B, multi-stem
WIH	WIGELIA FLORIDA MINUETT	MINUETT WIGELIA	27	50cm spr	pottd., 50cm o/c
<b>CONIFEROUS SHRUBS</b>					
JST	JUNIPERUS SIBIRICA	TAMARIX JUNIFER	27	50cm spr	pottd., 100cm o/c
TAC	TAXUS CANADENSIS	CANADA VEW	12	50cm ht.	pottd., 100cm o/c
<b>PERENNIALS</b>					
AST	ASTER divaricatus	WHITE WOODLAND ASTER	6	15cm pot.	plant 50cm o/c
GER	GERANIUM maculatum	WILD GERANIUM	35	15cm pot.	plant 30cm o/c
HOS	HOSTA 'Big Daddy'	Big Daddy HOSTA	55	15cm pot.	plant 75cm o/c
RUI	RUBRO-COCA 'Ina'	BROWN-YEDED SUSAN	285	15cm pot.	plant 50cm o/c
<b>ORNAMENTAL GRASSES / SEDGES</b>					
KAL	KAL FORSTERER REED GRASS	REED GRASS	39	15cm pot.	plant 75cm o/c
CAR	CAREX edburna	IVORY SEDGE	75	15cm pot.	plant 30cm o/c
EIV	ELIVALS 'Invisik'	BOTTLEBRUSH GRASS	5	15cm pot.	plant 60cm o/c

**GENERAL NOTES**

1. This drawing shall be read in conjunction with all relevant Architectural, Engineering and related Drawings and Documents.
2. Refer to Engineering Drawings for Grading and Servicing.
3. Refer to Architectural Drawings for Site layout.
4. Notes to this drawing shall override all other specifications and shall be responsible for adequate protection from damage during construction.
5. Plant material shall be No. 1 Grade and shall comply with the Metric Guide Specifications For Nursery Stock (latest edition), published by the Canadian Nursery Trades Association.
6. Plant Material locations are Schematic / Approximate only. Contractor shall stake out locations on site prior to work.
7. Contractor shall guarantee all plant material for a period of one (1) full year from the date of final acceptance.
8. Shrubs shall be planted in a continuous prepared bed of 450mm depth planting soil mix covered over with a woven polypropylene weed control fabric (LANDSCAPE FABRIC-Green-Line by Thrace-LINO) and 75mm depth Perennials and Ornamental Grasses shall be planted in a continuous prepared bed of 450mm depth planting soil mix covered over with 75mm depth composted pine mulch to finish grade. (NO WEED CONTROL FABRIC), as specified.
9. Sod areas to receive 125mm topsoil. Sod shall be No. 1 quality conforming to the Canadian Nursery Sod Growers Specification.
10. Seed areas to receive 150mm topsoil. Grass seed shall be Certified Canada No. 1 Grade in accordance with Government of Canada Seeds Act and Regulations. Retain all areas damaged or disturbed beyond the Plant Material substitutions shall not be permitted without written approval from the Consultant.
11. Provide protection for existing trees to be retained. Install fencing to drip-line (canopy) of each tree or grove of trees. (if close together). No excavation, filling, storage of materials, disposal of chemicals or root zone disturbance or compaction, shall take place within the protected area.
12. Where limbs of trees are removed to accommodate construction work, they shall be done in accordance with accepted arboricultural practice.
13. Where root systems become exposed due to excavation, carefully trim damaged roots and provide temporary mulch until backfill is undertaken. Keep roots moist at all times.
14. Construct walls or retaining walls if grades around trees are to be modified. Root feed all existing trees after construction.
15. Contractor shall advise Consultant a minimum of 48hrs. prior to proceeding landscape work and any required Field Reviews.
16. THIS PLAN HAS BEEN PREPARED FOR MUNICIPAL SITE PLAN APPROVAL ONLY AND MAY NOT BE USED FOR ANY OTHER PURPOSE.

Contractor shall check and verify all dimensions on site and report all errors and/or omissions to the Consultant.

Do not scale Drawing.

Copyright reserved. This Drawing is the exclusive property of Levstek Consultants Inc.

Do not reuse without consent.

**LEVSTEK CONSULTANTS**  
A. N. D. S. C. A. R. E. R. E. S. T. R. A. T. I. O. N.  
1971 HERRINGWAY DRIVE, SUITE 200, MISSISSAUGA, ONTARIO L4X 1V8

Stamp:

Client: SALVATION ARMY CHURCH BARRHAVEN 102 BILL LEATHERM DRIVE

Project: LANDSCAPE PLAN PHASE 1

Scale: 1:300

Date: MAR 2016

Project No.: 1114

Drawing No.: L1.01

NO.	DATE	REVISION	PER CITY COMMENTS
1.	APR. 2016	ISSUE FOR SITE PLAN APPROVAL	
2.	OCT. 2016		