

APPROVED UNDER SECTION 51 OF THE PLANNING ACT BY THE CITY OF OTTAWA THIS 27 DAY OF September 2016

*John L. Whalen*  
 JOHN L. WHELAN, ACTING GENERAL MANAGER  
 PLANNING, INFRASTRUCTURE AND ECONOMIC  
 DEVELOPMENT DEPARTMENT, CITY OF OTTAWA

**PLAN 4M-1574**  
 I CERTIFY THAT THIS PLAN IS REGISTERED IN THE LAND REGISTRY OFFICE FOR THE LAND TITLES DIVISION OF OTTAWA-CARLETON NO. 4 AT 11:49 O'CLOCK ON THE 30 DAY OF September 2016 AND ENTERED IN THE PARCEL REGISTER FOR PROPERTY IDENTIFIERS 04524-0916 AND THE REQUIRED CONSENTS ARE REGISTERED AS PLAN DOCUMENT NO. OC 1931697

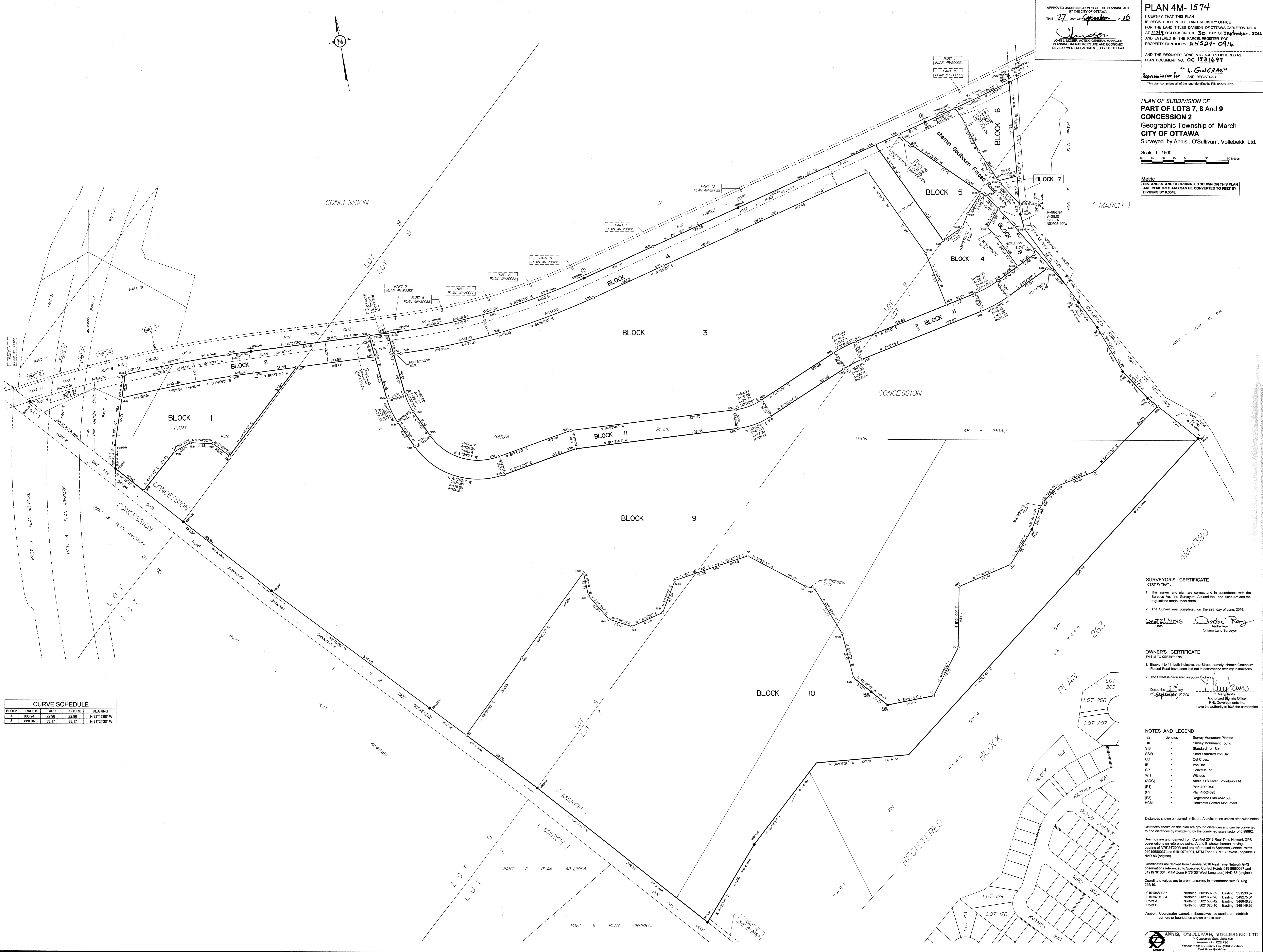
Representative for "A.G. CRAS"  
 LAND REGISTRAR

This plan comprises all of the land identified by PIN 04524-0916.

PLAN OF SUBDIVISION OF  
**PART OF LOTS 7, 8 AND 9  
 CONCESSION 2**  
 Geographic Township of March  
**CITY OF OTTAWA**  
 Surveyed by Annis, O'Sullivan, Vollebek Ltd.

Scale 1:1500

Metric  
 DISTANCES AND COORDINATES SHOWN ON THIS PLAN ARE IN METRES AND CAN BE CONVERTED TO FEET BY DIVIDING BY 3.2808



**CURVE SCHEDULE**

BLOCK	RADIUS	ARC	CHORD	BEARING
4	888.94	22.98	22.98	N 33°12'52" W
8	888.94	33.17	33.17	N 31°24'20" W

**SURVEYOR'S CERTIFICATE**  
 I CERTIFY THAT:  
 1. This survey and plan are correct and in accordance with the Survey Act, the Surveyors' Act and the Land Titles Act and the regulations made under them.  
 2. The Survey was completed on the 22th day of June, 2016.

Scott J. 2016 Andre Roy  
 Date Ontario Land Surveyor

**OWNER'S CERTIFICATE**  
 THIS IS TO CERTIFY THAT:  
 1. Blocks 1 to 11, both inclusive, the Street, namely, chemin Goulbourn Forced Road have been laid out in accordance with my instructions.  
 2. The Street is dedicated as public highway.

Dated the 21st day of September, 2016  
 Mary Jarvis  
 Authorized Signing Officer  
 I have the authority to bind the corporation.

**NOTES AND LEGEND**

- denotes Survey Monument Planted
- denotes Survey Monument Found
- SIB Standard Iron Bar
- SSIB Short Standard Iron Bar
- CC Cut Cross
- IB Iron Bar
- CP Concrete Pin
- WIT Witness
- (AOG) Annis, O'Sullivan, Vollebek Ltd.
- (P1) Plan 4R-19440
- (P2) Plan 4R-24695
- (P3) Registered Plan 4M-1380
- HCM Horizontal Control Monument

Distances shown on curved limits are Arc distances unless otherwise noted.  
 Distances shown on this plan are ground distances and can be converted to grid distances by multiplying by the combined scale factor of 0.99992.  
 Bearings are grid, derived from Can-Net 2016 Real Time Network GPS observations on reference points A and B, shown herein, having a bearing of N76°24'20"W and are referenced to Specified Control Points 0191968007 and 0191979104, MTM Zone 9 (17°30' West Longitude) NAD83 (original).  
 Coordinates are derived from Can-Net 2016 Real Time Network GPS observations referenced to Specified Control Points 0191968007 and 0191979104, MTM Zone 9 (17°30' West Longitude) NAD83 (original).  
 Coordinate values are to urban accuracy in accordance with O. Reg. 216/10.  
 0191968007 Northing 5022507.89 Easting 351533.87  
 0191979104 Northing 5021669.28 Easting 349275.04  
 - Point A Northing 5021595.42 Easting 348664.73  
 - Point B Northing 5021628.10 Easting 349149.92  
 Caution: Coordinates cannot, in themselves, be used to re-establish corners or boundaries shown on this plan.