

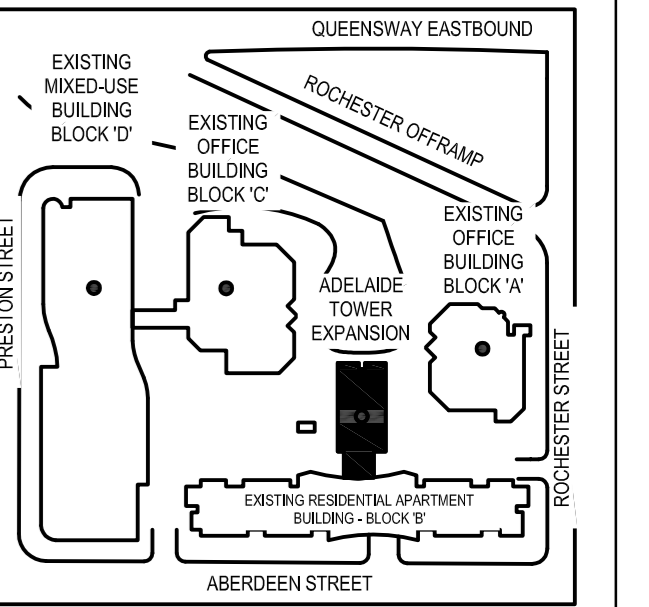
CLIENT
SAKTO CORPORATION

910-333 PRESTON STREET
OTTAWA, ON, K1S 5N4

COPYRIGHT

ISSUES	DESCRIPTION	DATE
1.	ISSUED FOR SPA	2016/09/20
2.	REVISED PER CITY COMMENTS	2016/12/14
3.	REVISED PARKING ALONG ENTRANCE	2017/04/07
4.	PATH ADDED FROM ROCHESTER	2017/05/24
5.	SIAMESE CONNECTION, DEPRESSED CURBS AND FIRE TRUCK ROUTE ADDED	2017/07/12
6.	REVISED SITE PLAN APPLICATION	2018/01/11

KEYPLAN

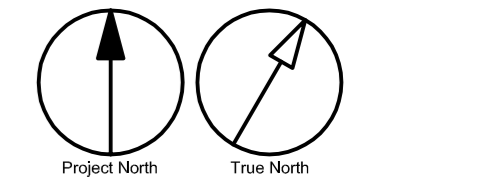


CONSULTANTS



Engineers, Planners & Landscape Architects
Suite 200, 240 Michael Cowland Drive
Ottawa, Ontario, Canada K1M 1P6
Telephone: (613) 254-9643
Facsimile: (613) 254-5867
Website: www.novatech-eng.com

NORTH ARROW:



SEAL



PRIME CONSULTANT

IBIG GROUP
Suite 500, 611 Merivale Road NE,
Calgary, AB T2E 2V6, Canada
Tel: 403 270 0500 fax: 403 270 5610
ibiggroup.com

PROJECT

ADELAIDE TOWER EXPANSION
17 Aberdeen Street
Ottawa, Ontario, Canada
K1S 3J3

PROJECT NO:

116070

DRAWN BY:

LGB

CHECKED BY:

GJM

PROJECT MGR:

GJM

APPROVED BY:

GJM

SCALE:

1:250

DATE:

2019-01-04

SHEET TITLE

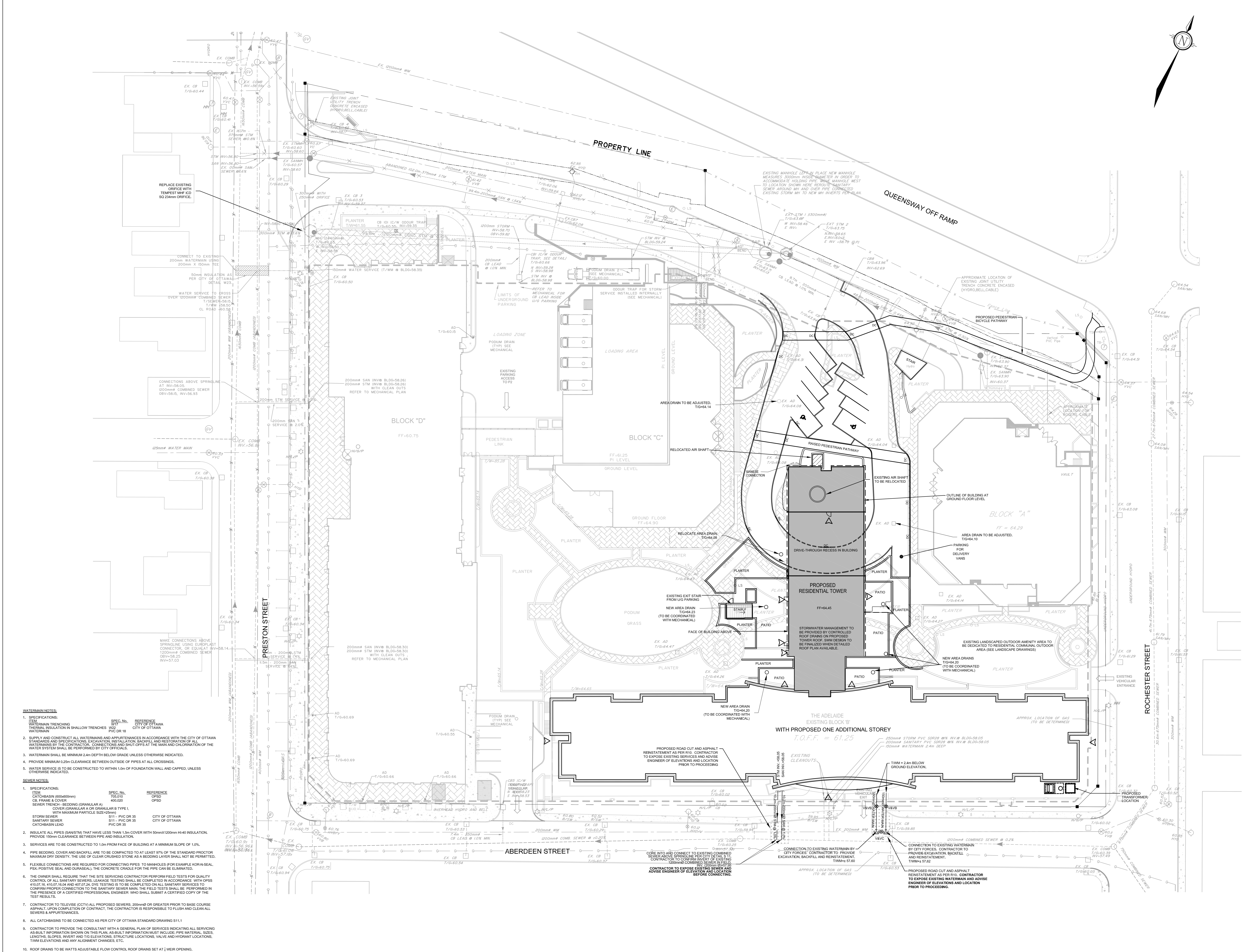
GENERAL PLAN OF SERVICES

SHEET NUMBER

C.100

ISSUE

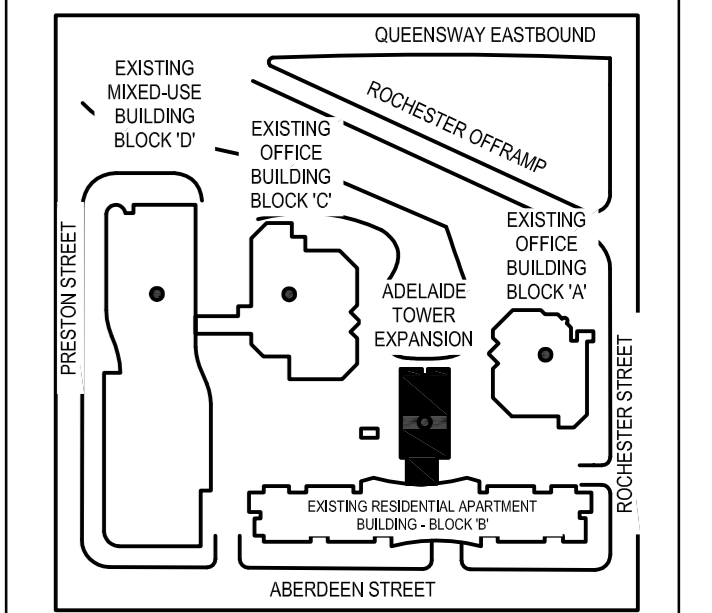
6



- WATERMAIN NOTES:**
- SPECIFICATIONS:
ITEM: WATERMAIN TRENCHING
REFERENCE: CITY OF OTTAWA
SPEC. NO.: W17
CITY OF OTTAWA
WATERMAIN: PVC DR 18
 - SUPPLY AND CONSTRUCT ALL WATERMAINS AND APPURTENANCES IN ACCORDANCE WITH THE CITY OF OTTAWA STANDARDS AND SPECIFICATIONS. EXCAVATION, INSTALLATION, BACKFILL AND RESTORATION OF ALL WATERMAINS BY THE CONTRACTOR. CONNECTIONS AND SHUT-OFFS AT THE MAIN AND CHLORINATION OF THE WATER SYSTEM SHALL BE PERFORMED BY CITY OFFICIALS.
 - WATERMAIN SHALL BE MINIMUM 2.4m DEPTH BELOW GRADE UNLESS OTHERWISE INDICATED.
 - PROVIDE MINIMUM 0.25m CLEARANCE BETWEEN OUTSIDE OF PIPES AT ALL CROSSINGS.
 - WATER SERVICE IS TO BE CONSTRUCTED TO WITHIN 1.0m OF FOUNDATION WALL AND CAPPED, UNLESS OTHERWISE INDICATED.
- SEWER NOTES:**
- SPECIFICATIONS:
ITEM: CATCHBASIN (600x600mm)
SPEC. NO.: 702.010
REFERENCE: OPRD
CITY OF OTTAWA
CATCHBASIN COVER (GRANULAR A OR GRANULAR B TYPE),
WITH MAXIMUM PARTICLE SIZE 25mm
CITY OF OTTAWA
SANITARY SEWER: S11 - PVC DR 35
CITY OF OTTAWA
CATCHBASIN LEAD: S11 - PVC DR 35
CITY OF OTTAWA
 - INSULATE ALL PIPES (SANSTW) THAT HAVE LESS THAN 1.5m COVER WITH 50mmx1200mm H-40 INSULATION. PROVIDE 150mm CLEARANCE BETWEEN PIPE AND INSULATION.
 - SERVICES ARE TO BE CONSTRUCTED TO 1.0m FROM FACE OF BUILDING AT A MINIMUM SLOPE OF 1.0%.
 - PIPE BEDDING COVER AND BACKFILL ARE TO BE COMPACTED TO AT LEAST 97% OF THE STANDARD PROCTOR MAXIMUM DRY DENSITY. THE USE OF CLEAR CRUSHED STONE AS A BEDDING LAYER SHALL NOT BE PERMITTED.
 - FLEXIBLE CONNECTIONS ARE REQUIRED FOR CONNECTING PIPES TO MANHOLES (FOR EXAMPLE AOR-A-SEAL, PSX, POSITIVE SEAL, AND DURASEAL). THE CONCRETE CHAMBER FOR THE PIPE CAN BE ELIMINATED.
 - THE OWNER SHALL REQUIRE THAT THE SITE SERVICING CONTRACTOR PERFORM FIELD TESTS FOR QUALITY CONTROL OF ALL SANITARY SEWERS. LEAKAGE TESTING SHALL BE COMPLETED IN ACCORDANCE WITH OPS 4307.18, 4307.16.5 AND 4307.24. DYE TESTING IS TO BE COMPLETED ON ALL SANITARY SEWERS TO CONFIRM PROPER CONNECTION TO THE SANITARY SEWER MAIN. THE FIELD TESTS SHALL BE PERFORMED IN THE PRESENCE OF A CERTIFIED PROFESSIONAL ENGINEER, WHO SHALL SUBMIT A CERTIFIED COPY OF THE TEST RESULTS.
 - CONTRACTOR TO TELETEST (CCTV) ALL PROPOSED SEWERS, 200mm Ø OR GREATER PRIOR TO BASE COURSE ASPHALT. UPON COMPLETION OF CONTRACT, THE CONTRACTOR IS RESPONSIBLE TO FLUSH AND CLEAN ALL SEWERS & APPURTENANCES.
 - ALL CATCHBASINS TO BE CONNECTED AS PER CITY OF OTTAWA STANDARD DRAWING S11.1
 - CONTRACTOR TO PROVIDE THE CONSULTANT WITH A GENERAL PLAN OF SERVICES INDICATING ALL SERVICING AS-BUILT INFORMATION SHOWN ON THIS PLAN. AS-BUILT INFORMATION MUST INCLUDE: PIPE MATERIAL, SIZES, LENGTHS, SLOPES, INVERT AND TIE-INS, STRUCTURE LOCATIONS, VALVE AND HYDRANT LOCATIONS, TWM ELEVATIONS AND ANY ALIGNMENT CHANGES, ETC.
 - ROOF DRAINS TO BE WAITS ADJUSTABLE FLOW CONTROL ROOF DRAINS SET AT 1/2" OVER OPENING.

ISSUES	DESCRIPTION	DATE
1.	ISSUED FOR RFP	2016/09/20
2.	REVISED PER CITY COMMENTS	2016/12/14
3.	REVISED PARKING ALONG ENTRANCE	2017/04/07
4.	PATH ADDED FROM ROCHESTER	2017/05/24
5.	SIAMESE CONNECTION, DEPRESSED CURBS AND FIRE TRUCK ROUTE ADDED	2017/07/12
6.	REVISED SITE PLAN APPLICATION	2018/01/11

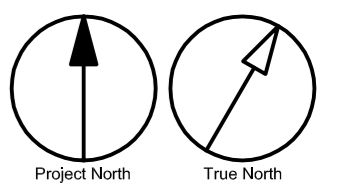
KEYPLAN



CONSULTANTS

NOVATECH
Engineers, Planners & Landscape Architects
Suite 200, 240 Michael Cowland Drive
Ottawa, Ontario, Canada K1M 1K6
Telephone: (613) 254-9643
Facsimile: (613) 254-5567
Website: www.novatech-eng.com

NORTH ARROW:



SEAL



PRIME CONSULTANT

IBIG GROUP
Suite 500, 611 Mainville Road NE,
Calgary, AB T2E 2V5, Canada
Tel: 403 270 0500 Fax: 403 270 9610
ibiggroup.com

PROJECT

ADELAIDE TOWER EXPANSION
17 Aberdeen Street
Ottawa, Ontario, Canada
K1S 3J3

PROJECT NO:

116070

DRAWN BY:

MWCLGB

CHECKED BY:

LGB

PROJECT MGR:

GJM

APPROVED BY:

GJM

SCALE:

1:250

DATE:

2019-01-04

SHEET TITLE

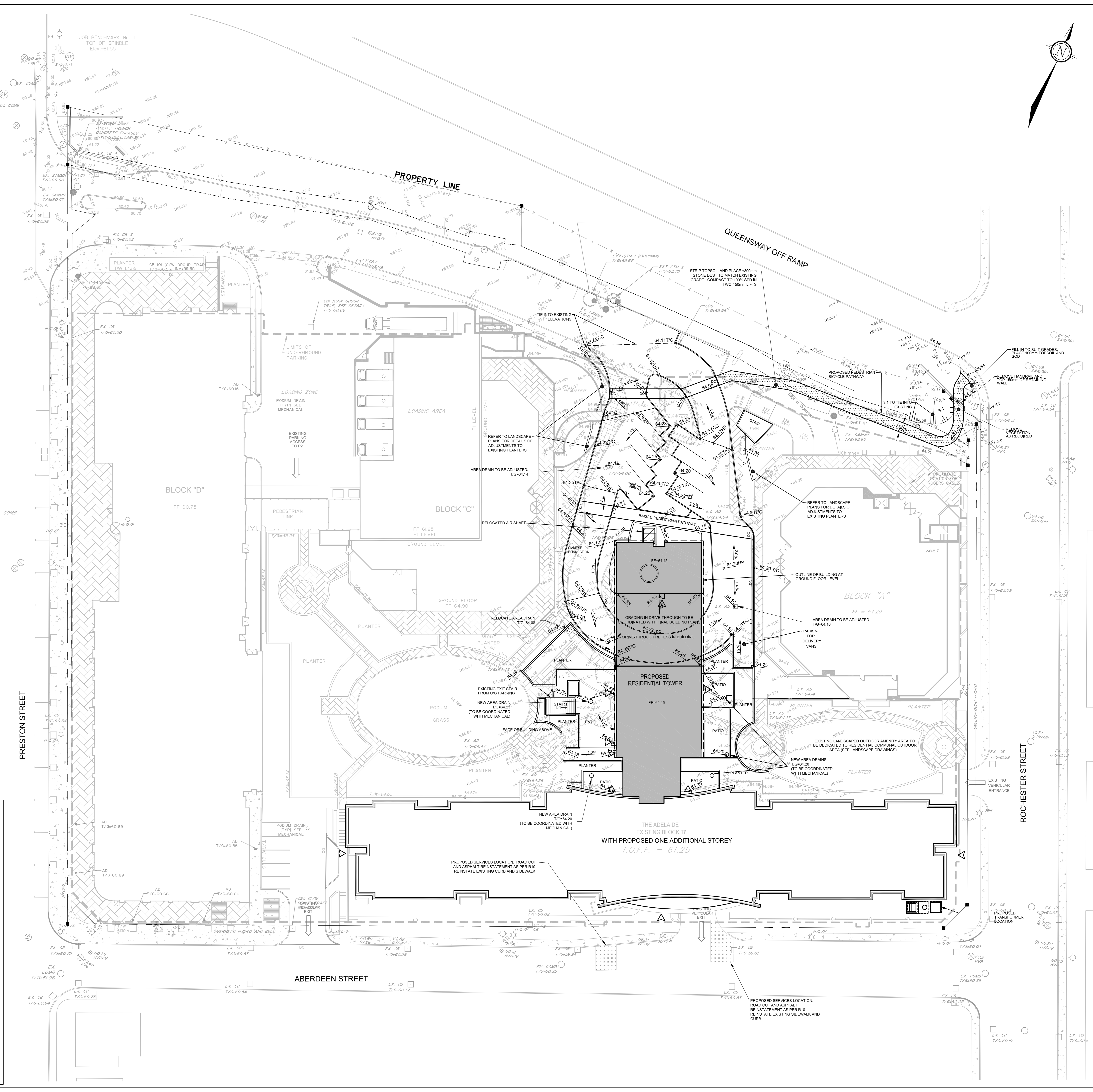
GRADING PLAN

SHEET NUMBER

C.101

ISSUE

6



GRADING NOTES:

- ALL TOPSOIL, ORGANIC OR DELETERIOUS MATERIAL MUST BE ENTIRELY REMOVED FROM BENEATH THE PROPOSED PAVED AREAS AS DIRECTED BY THE SITE ENGINEER OR GEOTECHNICAL ENGINEER.
- EXPOSED SUBGRADE IN PROPOSED PAVED AREAS SHOULD BE PROOF ROLLED WITH A LARGE STEEL DRUM ROLLER AND INSPECTED BY THE GEOTECHNICAL ENGINEER PRIOR TO THE PLACEMENT OF GRANULARS.
- ANY SOFT AREAS EVIDENT FROM THE PROOF ROLLING SHOULD BE SUB-EXCAVATED AND REPLACED WITH SUITABLE MATERIAL THAT IS FROST COMPATIBLE WITH THE EXISTING SOILS AS RECOMMENDED BY THE GEOTECHNICAL ENGINEER.
- THE GRANULAR BASE SHOULD BE COMPACTED TO AT LEAST 100% OF THE STANDARD PROCTOR MAXIMUM DRY DENSITY VALUE. ANY ADDITIONAL GRANULAR FILL USED BELOW THE PROPOSED PAVEMENT SHOULD BE COMPACTED TO AT LEAST 95% OF THE STANDARD PROCTOR MAXIMUM DRY DENSITY VALUE.
- MINIMUM OF 2% GRADE FOR ALL GRASS AREAS UNLESS OTHERWISE NOTED.
- ALL GRADES BY CURBS ARE EDGE OF PAVEMENT GRADES UNLESS OTHERWISE INDICATED.
- ALL CURBS SHALL BE BARRIER CURBS (150mm) UNLESS OTHERWISE NOTED AND CONSTRUCTED AS PER CITY OF OTTAWA STANDARDS (SCT-1).
- REFER TO LANDSCAPE PLAN FOR PLANTING AND OTHER LANDSCAPE FEATURE DETAILS.
- CONTRACTOR TO PROVIDE THE CONSULTANT WITH A GRADING PLAN INDICATING AS-BUILT ELEVATIONS OF ALL DESIRABLE GRADES SHOWN ON THIS PLAN.

GENERAL NOTES:

- COORDINATE AND SCHEDULE ALL WORK WITH OTHER TRADES AND CONTRACTORS.
- DETERMINE THE EXACT LOCATION, SIZE, MATERIAL AND ELEVATION OF ALL EXISTING UTILITIES PRIOR TO COMMENCING CONSTRUCTION. PROTECT AND ASSUME RESPONSIBILITY FOR ALL EXISTING UTILITIES WHETHER OR NOT SHOWN ON THIS DRAWING.
- OBTAIN ALL NECESSARY PERMITS AND APPROVALS FROM THE CITY OF OTTAWA BEFORE COMMENCING CONSTRUCTION.
- BEFORE COMMENCING CONSTRUCTION OBTAIN AND PROVIDE PROOF OF COMPREHENSIVE, ALL RISK AND OPERATIONAL LIABILITY INSURANCE FOR \$5,000,000.00, INSURANCE POLICY TO NAME OWNERS, ENGINEERS AND ARCHITECTS AS CO-INSURED.
- RESTORE ALL DISTURBED AREAS ON-SITE AND OFF-SITE, INCLUDING TRENCHES AND SURFACES ON PUBLIC ROAD ALLOWANCES TO EXISTING CONDITIONS OR BETTER TO THE SATISFACTION OF THE CITY OF OTTAWA AND ENGINEER.
- REMOVE FROM SITE ALL EXCESS EXCAVATED MATERIAL, ORGANIC MATERIAL AND DEBRIS UNLESS OTHERWISE INSTRUCTED BY ENGINEER. EXCAVATE AND REMOVE FROM SITE ANY CONTAMINATED MATERIAL. ALL CONTAMINATED MATERIAL SHALL BE DISPOSED OF AT A LICENSED LANDFILL FACILITY.
- ALL ELEVATIONS ARE GEODETIC.
- THE GEOTECHNICAL CONSULTANT IS TO REVIEW ON-SITE CONDITIONS AFTER EXCAVATION PRIOR TO PLACEMENT OF THE GRANULAR MATERIAL.
- REFER TO ARCHITECTS AND LANDSCAPE ARCHITECTS DRAWINGS FOR BUILDING AND HARDSURFACE AREAS AND DIMENSIONS.
- REFER TO STORMWATER MANAGEMENT REPORT (R-2016-070) PREPARED BY NOVATECH ENGINEERING CONSULTANTS LTD.
- SAW CUT AND KEY GRIND ASPHALT AT ALL ROAD CUTS AND ASPHALT TIE IN POINTS AS PER CITY OF OTTAWA STANDARDS (R10).
- PROVIDE LINE PARKING PAINTING.