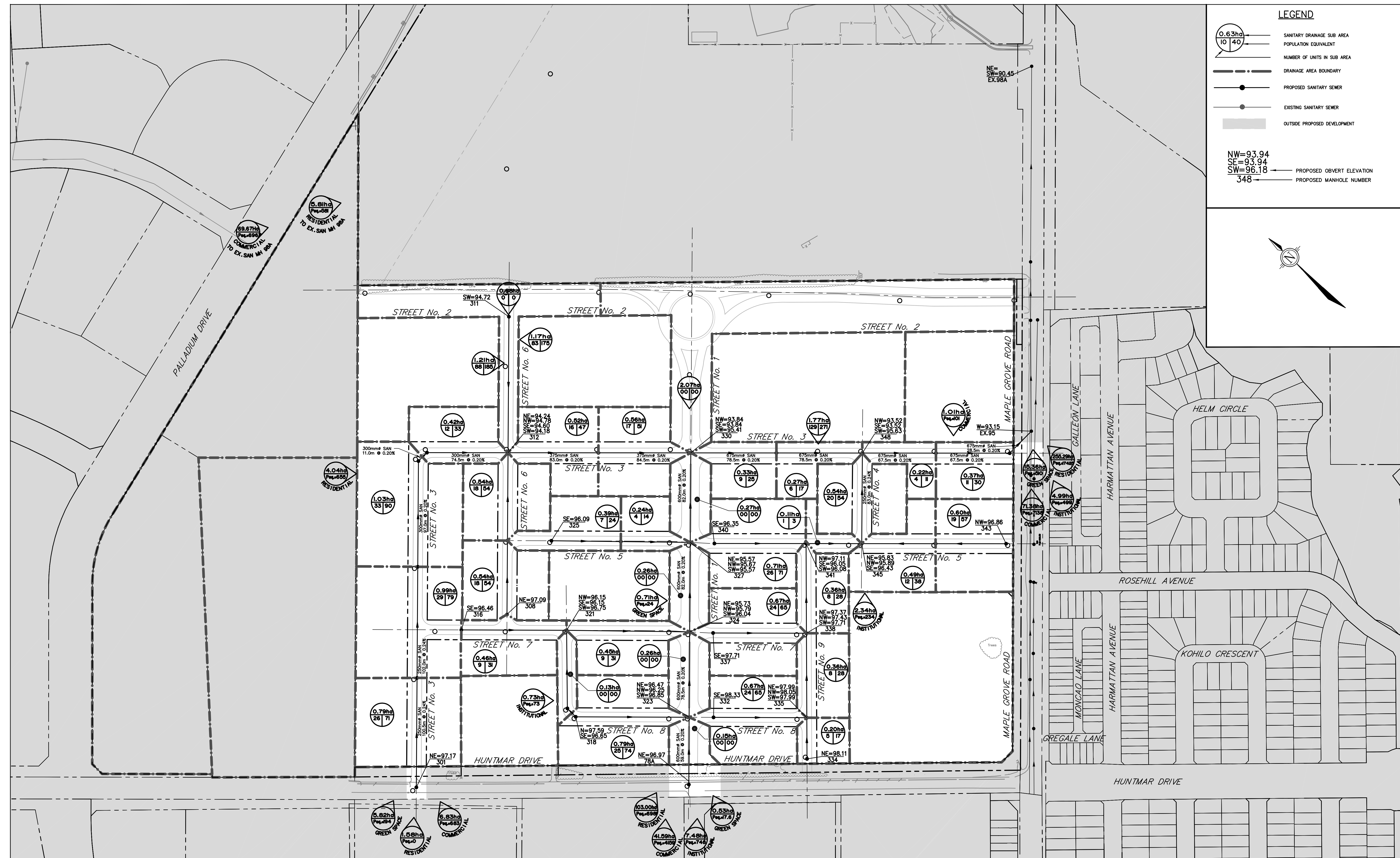
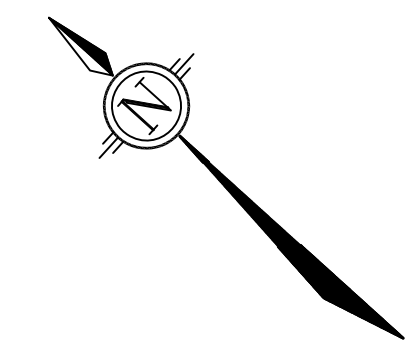
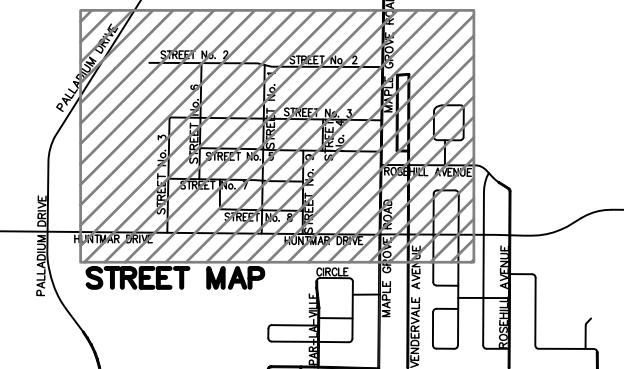


**LEGEND**

- SANITARY DRAINAGE SUB AREA
  - POPULATION EQUIVALENT
  - NUMBER OF UNITS IN SUB AREA
  - DRAINAGE AREA BOUNDARY
  - PROPOSED SANITARY SEWER
  - EXISTING SANITARY SEWER
  - OUTSIDE PROPOSED DEVELOPMENT
- NW=93.94  
SE=93.94  
SW=96.18  
348
- PROPOSED OBVERT ELEVATION
  - PROPOSED MANHOLE NUMBER



THE POSITION OF ALL POLE LINES, CONDUITS, WATERMANS, SEWERS AND OTHER UNDERGROUND AND OVERGROUND UTILITIES AND STRUCTURES IS NOT NECESSARILY SHOWN ON THE CONTRACT DRAWINGS, AND WHERE SHOWN, THE ACCURACY OF THE POSITION OF SUCH UTILITIES AND STRUCTURES IS NOT GUARANTEED. BEFORE STARTING WORK, DETERMINE THE EXACT LOCATION OF ALL SUCH UTILITIES AND STRUCTURES AND ASSUME ALL LIABILITY FOR DAMAGE TO THEM.



No.	REVISION	APPLIES WHEN DRAWING MODIFIED	DATE	BY

SCALE  
1:500  
0 15m 45m

DESIGN AGS  
CHECKED JMD  
DRAWN CED  
CHECKED AGS  
APPROVED JMD

LICENSED PROFESSIONAL ENGINEER  
A. G. Y. SAUVE  
100142393  
Feb 12, 2020  
PROVINCE OF ONTARIO

LICENSED PROFESSIONAL ENGINEER  
J.M. DECOEUR  
Feb 12, 2020  
PROVINCE OF ONTARIO

**ATREL Engineering Inc.**  
Engineers - Ingénieurs  
1-2884 CHAMBERLAND STREET, ROCKLAND, ONTARIO K4K 1M6  
TEL.: (613) 446-7423

CITY OF OTTAWA  
130 HUNTMAR DR.  
PLAN  
MACRO SANITARY  
DRAINAGE AREA PLAN

LIONESS DEVELOPMENT INC.  
PROJECT No. 191002  
DATE JANUARY 2020  
DRAWING No. 191002-SANM