

**METRIC**  
DISTANCES AND ELEVATIONS SHOWN ON THIS PLAN ARE IN METRES  
AND CAN BE CONVERTED TO FEET BY DIVIDING BY 0.3048

COORDINATES WERE DERIVED FROM REAL TIME NETWORK  
OBSERVATIONS (SMARTNET) MTM ZONE 9, NAD83 ORIGINAL.

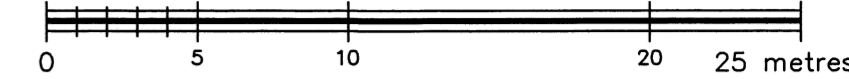
COORDINATES HAVE BEEN DETERMINED TO AN URBAN ACCURACY  
IN ACCORDANCE WITH SECTION 14(2) OF O.REG 216/10.

POINT ID	NORTHING	EASTING
1	5025639.97	368479.23
2	5025628.85	368375.49

COORDINATES CANNOT IN THEMSELVES BE USED TO RE-ESTABLISH  
CORNERS OR BOUNDARIES SHOWN ON THIS PLAN.

TOPOGRAPHIC SURVEY OF  
PART OF BLOCK 'C'  
REGISTERED PLAN 749,  
PART OF BLOCK 'C'  
REGISTERED PLAN 775  
AND  
PART OF LOT 23, JUNCTION GORE  
TOWNSHIP OF GLOUCESTER  
Now CITY OF OTTAWA

SCALE 1 : 250



FAIRHALL, MOFFATT & WOODLAND LIMITED  
ONTARIO LAND SURVEYORS

**ELEVATION NOTES**

- ELEVATIONS SHOWN HEREON ARE REFERRED TO GEODETIC DATUM (CGVD28).
- ELEVATIONS FOR MANHOLE COVERS AND CATCH BASINS HAVE TO BE INDEPENDENTLY CONFIRMED BEFORE THEY CAN BE ACCEPTED FOR FINAL DESIGN OR CONSTRUCTION PURPOSES.
- IT IS THE RESPONSIBILITY OF THE USER OF THIS INFORMATION TO VERIFY THAT THE JOB BENCHMARKS HAVE NOT BEEN ALTERED OR DISTURBED AND THAT THEIR RELATIVE ELEVATION AND DESCRIPTION AGREE WITH THE INFORMATION SHOWN ON THIS DRAWING.

**UTILITY NOTES**

- THIS DRAWING CANNOT BE ACCEPTED AS ACKNOWLEDGING ALL UNDERGROUND UTILITIES AND IT WILL BE THE RESPONSIBILITY OF THE USER TO CONTACT THE RESPECTIVE UTILITY AUTHORITIES FOR CONFIRMATION OR LOCATION.
- UNDERGROUND UTILITIES, AS REPORTED ON THIS DRAWING, ARE NOT BASED ON AN ACTUAL 'FIELD LOCATE' BY THE RESPECTIVE UTILITY AGENCIES BUT HAVE BEEN COMPILED FROM DATA OBTAINED FROM THE FOLLOWING SOURCE:
  - CITY OF OTTAWA PUBLIC UTILITIES REGISTRY
  - USL-1 UNDERGROUND SERVICE LOCATORS INC.
- BEFORE ANY WORK INVOLVING PROBING, EXCAVATING, ETC., A FIELD LOCATION OF UNDERGROUND PLANT BY THE PERTINENT UTILITY AUTHORITY IS MANDATORY.

**NOTES**

- BEARINGS ARE GRID, DERIVED FROM OBSERVED REFERENCE POINTS (1) AND (2) BY REAL TIME NETWORK OBSERVATIONS AND ARE REFERRED TO THE CENTRAL MERIDIAN, 76°30'W LONGITUDE MTM ZONE 9, (NAD83 ORIGINAL).
- DISTANCES ARE GROUND AND CAN BE CONVERTED TO GRID BY MULTIPLYING BY THE COMBINED SCALE FACTOR 0.999942.

**LEGEND**

- - SURVEY MONUMENT SET
- - SURVEY MONUMENT FOUND
- IB - IRON BAR
- SIB - STANDARD IRON BAR
- (P2) - OTTAWA-CARLETON CONDOMINIUM PLAN N° 32
- (P3) - OTTAWA-CARLETON CONDOMINIUM PLAN N° 96
- (S) - REGISTERED PLAN 749
- (M) - MEASURED
- (1692) - R. A. DENIS, O.L.S.
- (HJM) - H. J. MARTIN, O.L.S.
- (SU) - SOURCE UNKNOWN
- PIN - PROPERTY IDENTIFIER NUMBER
- SAN. - SANITARY
- DIA. - DIAMETER
- CB - CATCHBASIN
- UP - UTILITY POLE
- MH - MANHOLE
- LS - SIGN
- FH - FIRE HYDRANT
- LS - LAMP STANDARD
- WV - WATER VALVE
- GV - GAS VALVE
- BOLLARDS - BOLLARDS
- DT - DECIDUOUS TREE
- NP - NO PARKING
- OU - OVERHEAD UTILITY WIRE
- GSM - GASMAIN
- UR - UNDERGROUND ROGERS CABLE
- UB - UNDERGROUND BELL
- WM - WATERMAIN
- UH - UNDERGROUND HYDRO
- SS - STORM SEWER
- SS - SANITARY SEWER
- BH - BOREHOLE
- MW - MONITORING WELL
- RP - ROCK PROBE

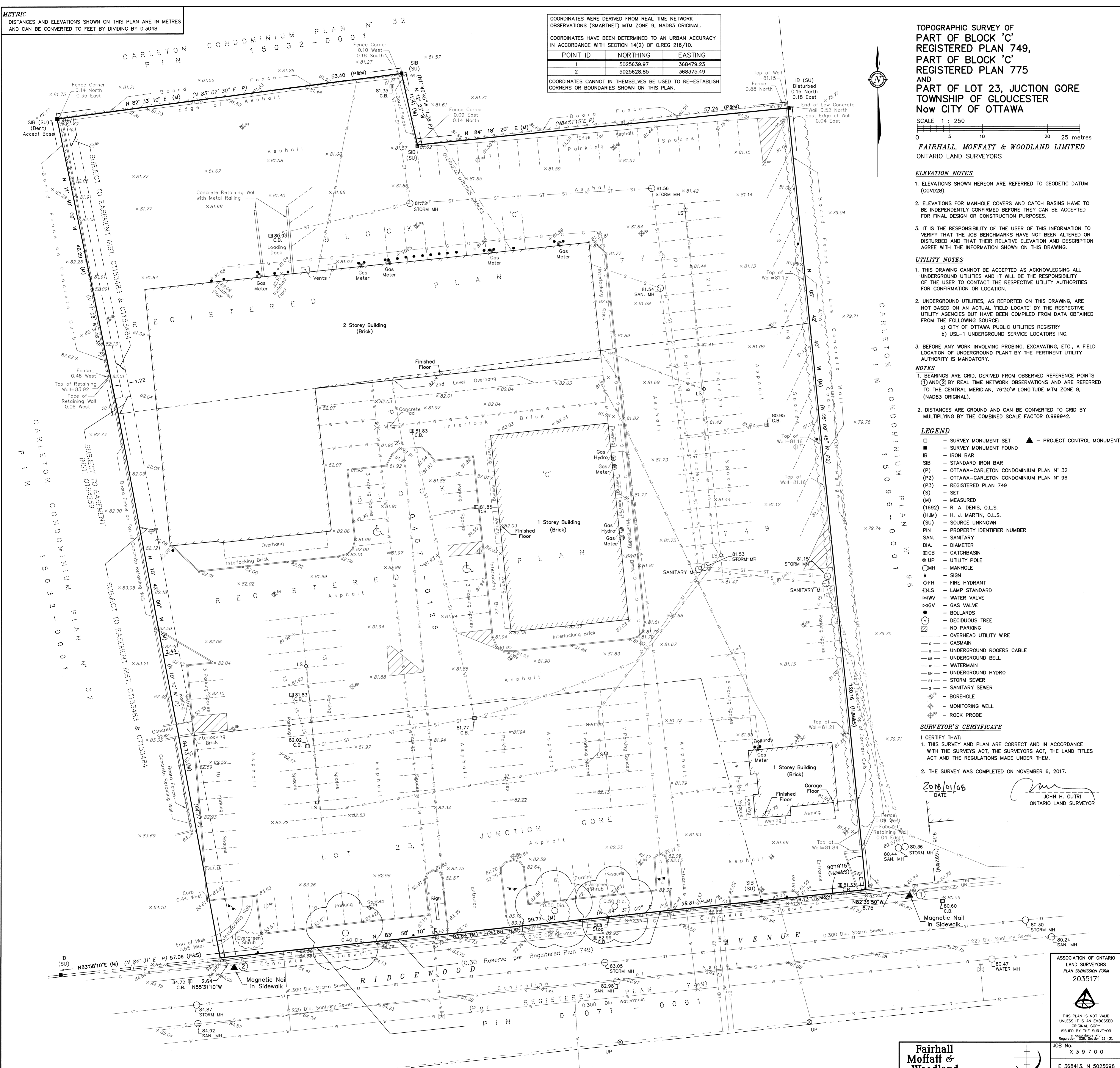
**SURVEYOR'S CERTIFICATE**

I CERTIFY THAT:  
1. THIS SURVEY AND PLAN ARE CORRECT AND IN ACCORDANCE WITH THE SURVEYS ACT, THE SURVEYORS ACT, THE LAND TITLES ACT AND THE REGULATIONS MADE UNDER THEM.

2. THE SURVEY WAS COMPLETED ON NOVEMBER 6, 2017.

2018/01/08  
DATE

JOHN H. GUTRI  
ONTARIO LAND SURVEYOR



© COPYRIGHT 2018. REPRODUCTION, ALTERATION OR DISTRIBUTION OF THIS PLAN WITHOUT THE WRITTEN CONSENT OF FAIRHALL, MOFFATT & WOODLAND LIMITED IS PROHIBITED.

**Fairhall  
Moffatt &  
Woodland**  
L I M I T E D  
ONTARIO LAND SURVEYORS

Surveying and Land Information Services  
100-600 TERRY FOX DRIVE, KANATA, ONTARIO K2L 4B6  
TEL: (613) 591-2580 FAX: (613) 591-1495  
www.fmw.on.ca

ASSOCIATION OF ONTARIO  
LAND SURVEYORS  
PLAN SUBMISSION FORM  
2035171

THIS PLAN IS NOT VALID  
UNLESS IT IS AN EMBOSSED  
ORIGINAL COPY  
ISSUED BY THE SURVEYOR  
IN ACCORDANCE WITH  
REGULATION 1026, SECTION 29 (3).

JOB No.  
X 3 9 7 0 0

E 368413, N 5025698

REFERENCE No.  
23 - 23 (JG) GR

S:\085\439700\plan\3517.dwg  
x397.tpd.dwg JAN 5, 2018

(dj / nj)