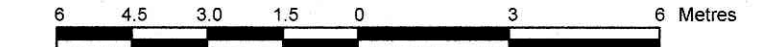


**PART OF LOTS 2 AND 3
(East O'Connor Street)
and
LOT 10
(North McLeod Street)
REGISTERED PLAN 30
CITY OF OTTAWA**

Surveyed by Annis, O'Sullivan, Vollebek Ltd.

Scale 1 : 150



Metric
DISTANCES SHOWN ON THIS PLAN ARE IN METRES AND
CAN BE CONVERTED TO FEET BY DIVIDING BY 0.3048

Surveyor's Certificate

I CERTIFY THAT:

- This survey and plan are correct and in accordance with the Survey Act, the Surveyors Act and the Land Titles Act and the regulations made under them.
- The survey was completed on the 4th day of April, 2018.

May 10, 2018
Date

A. S. Broxham
Andrew J. Broxham
Ontario Land Surveyor

Notes & Legend

Denotes	
—○—	Survey Monument Planted
—■—	Survey Monument Found
SSIB	Standard Iron Bar
SSIB	Short Standard Iron Bar
IB	Iron Bar
CC	Cut Cross
(WIT)	Witness
Meas.	Measured
(AOG)	Annis, O'Sullivan, Vollebek Ltd.
(P)	Registered Plan 30
(P1)	Plan 4R-7539
(P2)	(AOG) Plan & Field Notes November 22, 1990
(P3)	Ottawa-Carleton Standard Condominium Plan 875
○FH	Fire Hydrant
○SP	Water Stand Post
○VC	Valve Chamber (Watermain)
○MH-S	Maintenance Hole (Sanitary)
○MH-T	Maintenance Hole (Traffic)
○MH-ST	Maintenance Hole (Storm Sewer)
□CB	Catch Basin
BRW	Brick Retaining Wall
SRW	Stone Retaining Wall
CRW	Concrete Retaining Wall
WRW	Wood Retaining Wall
CLF	Chain Link Fence
BF	Board Fence
MF	Metal Fence
□AC	Air Conditioner
○GM	Gas Meter
—OHW—	Overhead Wires
○UP	Utility Pole
○AN	Anchor
○B	Bollard
○D	Diameter
+65.00	Location of Elevations
+65.00	Top of Wall Elevations
+65.00	Top of Concrete Curb Elevation
C/L	Centreline
—	Property Line
T/G	Top of Gate
U/S	Underside
Fdn.	Foundation
△ S	Sign
○	Deciduous Tree
—S—	Underground Sanitary Sewer
—W—	Underground Water
—G—	Underground Gas

ASSOCIATION OF ONTARIO
LAND SURVEYORS
PLAN SUBMISSION FORM
2046766

THIS PLAN IS NOT VALID UNLESS
IT IS AN EMBOSSED ORIGINAL
COPY ISSUED BY THE SURVEYOR
In accordance with
Regulation 1026, Section 29 (3).

SITE AREA = 832.1 m²

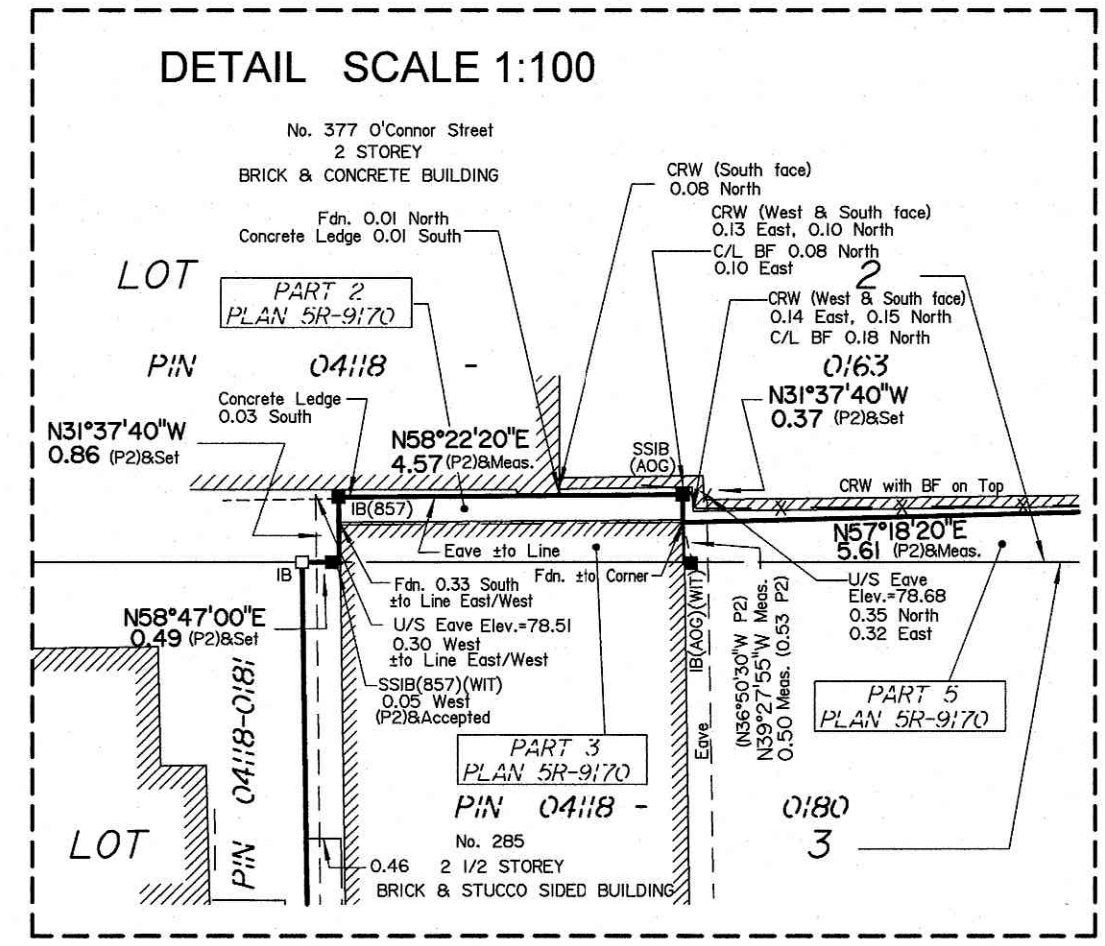
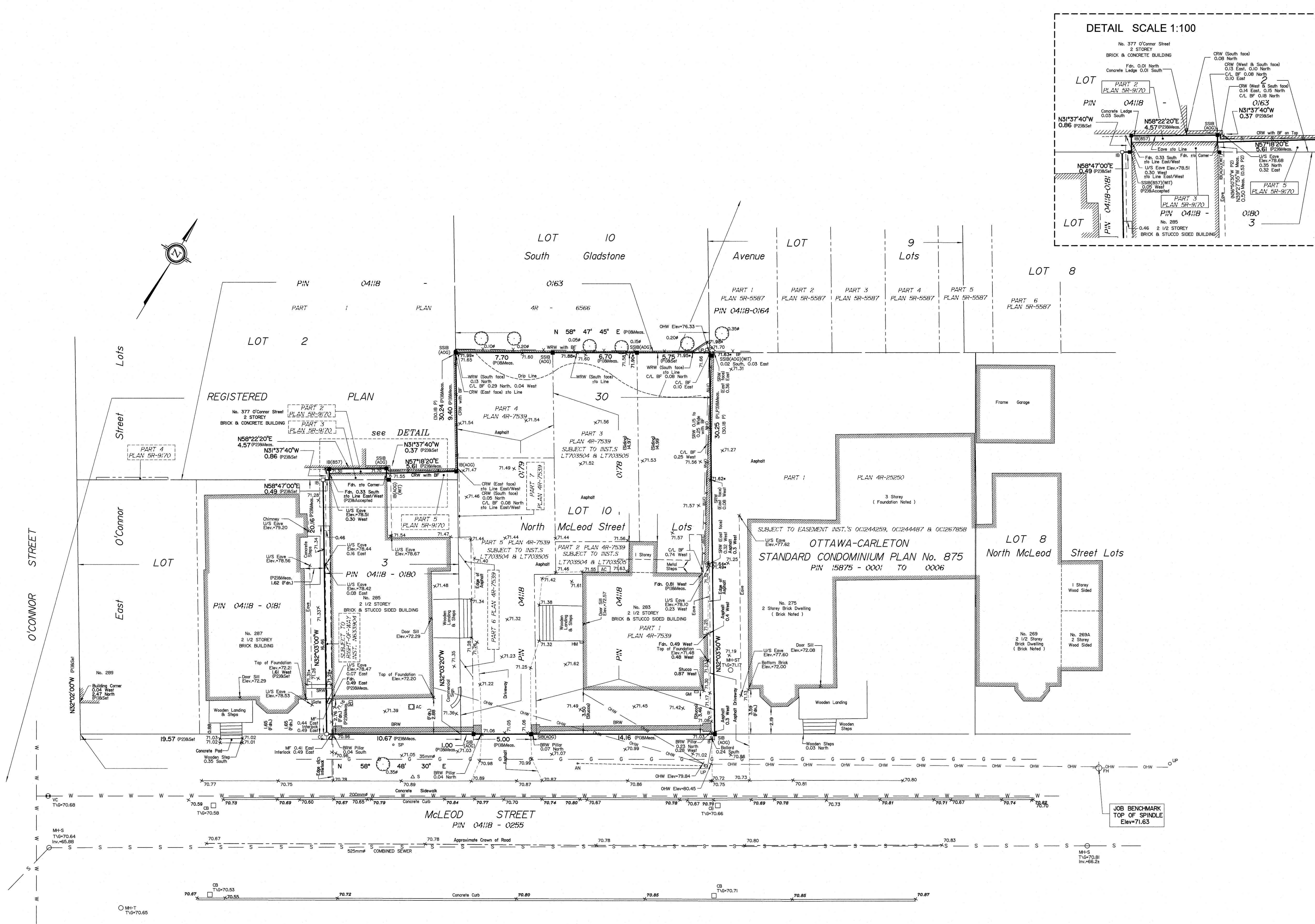
Bearings are grid and are referred to the Central Meridian of MTM Zone 9 (76°30' West Longitude) NAD-83 (original).
For bearing comparisons, a rotation of 1°20'00" counter-clockwise was applied to bearings on Plans P1 and P2.

ELEVATION NOTES

- Elevations shown are geodetic and are referred to the CGVD28 geodetic datum.
- It is the responsibility of the user of this information to verify that the job benchmark has not been altered or disturbed and that its relative elevation and description agrees with the information shown on this drawing.

UTILITY NOTES

- This drawing cannot be accepted as acknowledging all of the utilities and it will be the responsibility of the user to contact the respective utility authorities for confirmation.
- Only visible surface utilities were located.
- A field location of underground plant by the pertinent utility authority is mandatory before any work involving breaking ground, probing, excavating etc.
- Underground services and inverts are taken from City of Ottawa Engineering Drawings F-12-04, B20 and 5285 Sheet 3 of 8.



Y:\2018\17916-18\17916-18_NOL L1 10 RP 30 T 1.dwg