

PROJECT TEAM

ARCHITECT
HOBIN ARCHITECTURE
PATRICK BISSON
T 613-238-7200

PLANNING
FOTENN CONSULTANTS INC.
STEPHANIE MORRIS
T 613-730-5709

CIVIL
J.L. RICHARDS
LUCIE DALRYMPLE
T 613-913-4368

LANDSCAPE ARCHITECT
LASHLEY & ASSOCIATES LANDSCAPE ARCHITECT
DANIELA CORREA
T 613-233-8579

TRANSPORTATION
PARSONS
MATT MANTLE
T 613-222-8234

ENVIRONMENTAL
GRADIENT WIND ENGINEERING
JOSHUA FOSTER
T 613-836-0634

SURVEYOR
ANNIS O'SULLIVAN VOLLEBEK LTD.
ED HERWEYER
T 613-727-0850

no.	date	revision
1	21.09.02	ISSUED FOR REZONING

It is the responsibility of the appropriate contractor to check and verify all dimensions on site and report all errors and/or omissions to the architect.

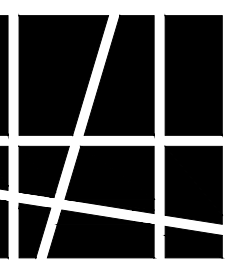
All contractors must comply with all pertinent codes and by-laws.

Do not scale drawings.

This drawing may not be used for construction until signed.

Copyright reserved.

Hobin Architecture Incorporated
63 Parnell Street
Ottawa, Ontario
Canada K1S 3K7
T: 613-238-7200
F: 613-235-2005
E: mail@hobinarc.com
hobinarc.com



HOBIN
ARCHITECTURE

PROJECT/LOCATION:
359 KENT STREET

DRAWING TITLE:
FLOOR PLAN
P2 LEVEL

DRAWN BY: PB

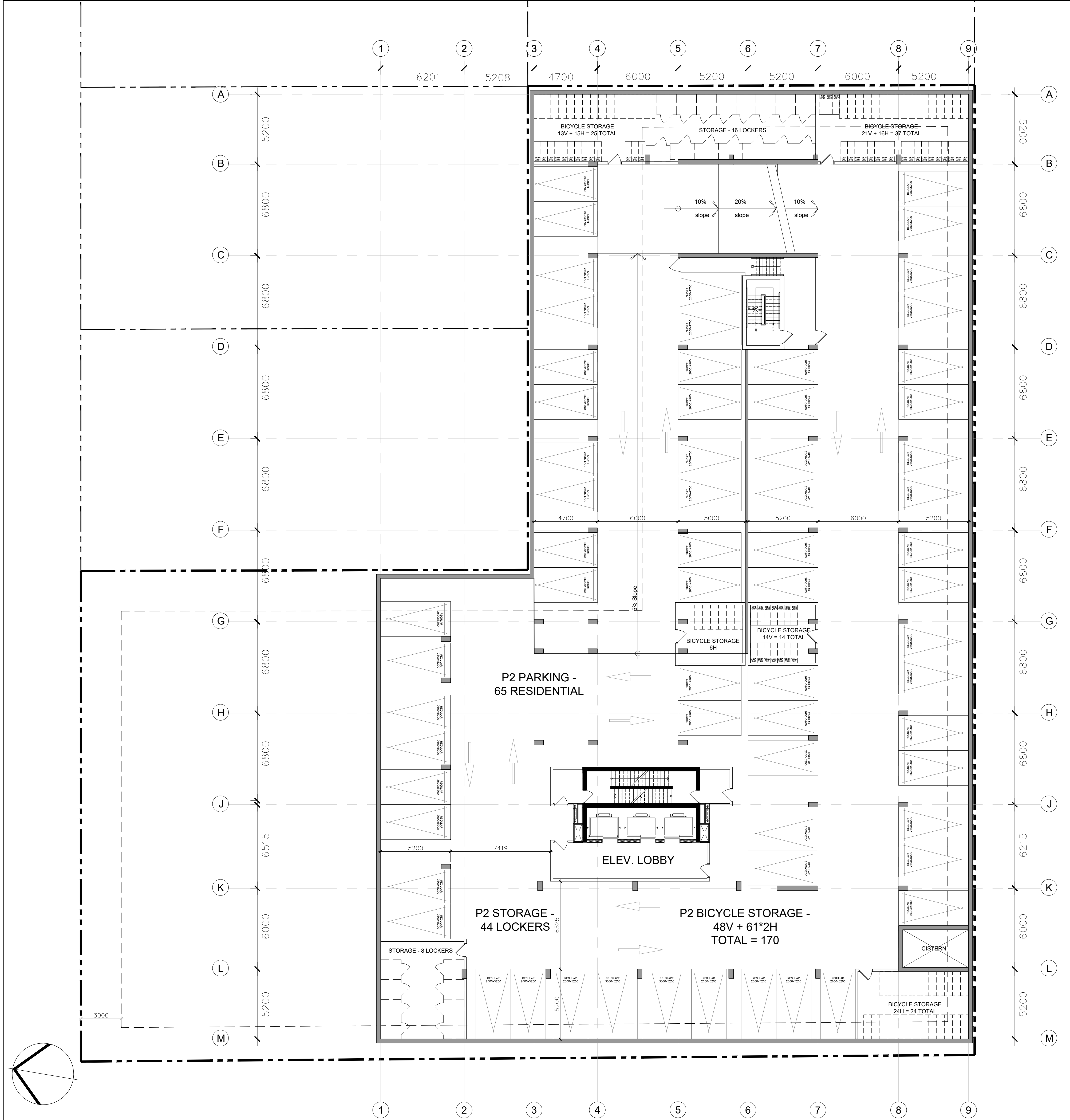
DATE: 21-08-27

SCALE: 1:150

PROJECT: 2027

DRAWING NO.: A204

REVISION NO.:



1 LEVEL P2 FLOOR PLAN
A2.04 1:150

None