

WOODRIDGE CRESCENT

(Reference Bearing) N 82° 54' 40" E (N82°54'40"E) P3  
 PIN 04701 - 0065 79.91 (P5,P6)Meas.

465465

PLAN OF SURVEY OF  
**PART OF BLOCK A**  
**REGISTERED PLAN 465465**  
**CITY OF OTTAWA**  
 Surveyed by Annis, O'Sullivan, Vollebek Ltd.

Scale 1:250  
 10 7.5 5.0 2.5 0 2.5 5 10 Metres

**Metric**  
 DISTANCES SHOWN ON THIS PLAN ARE IN METRES AND  
 CAN BE CONVERTED TO FEET BY DIVIDING BY 0.3048

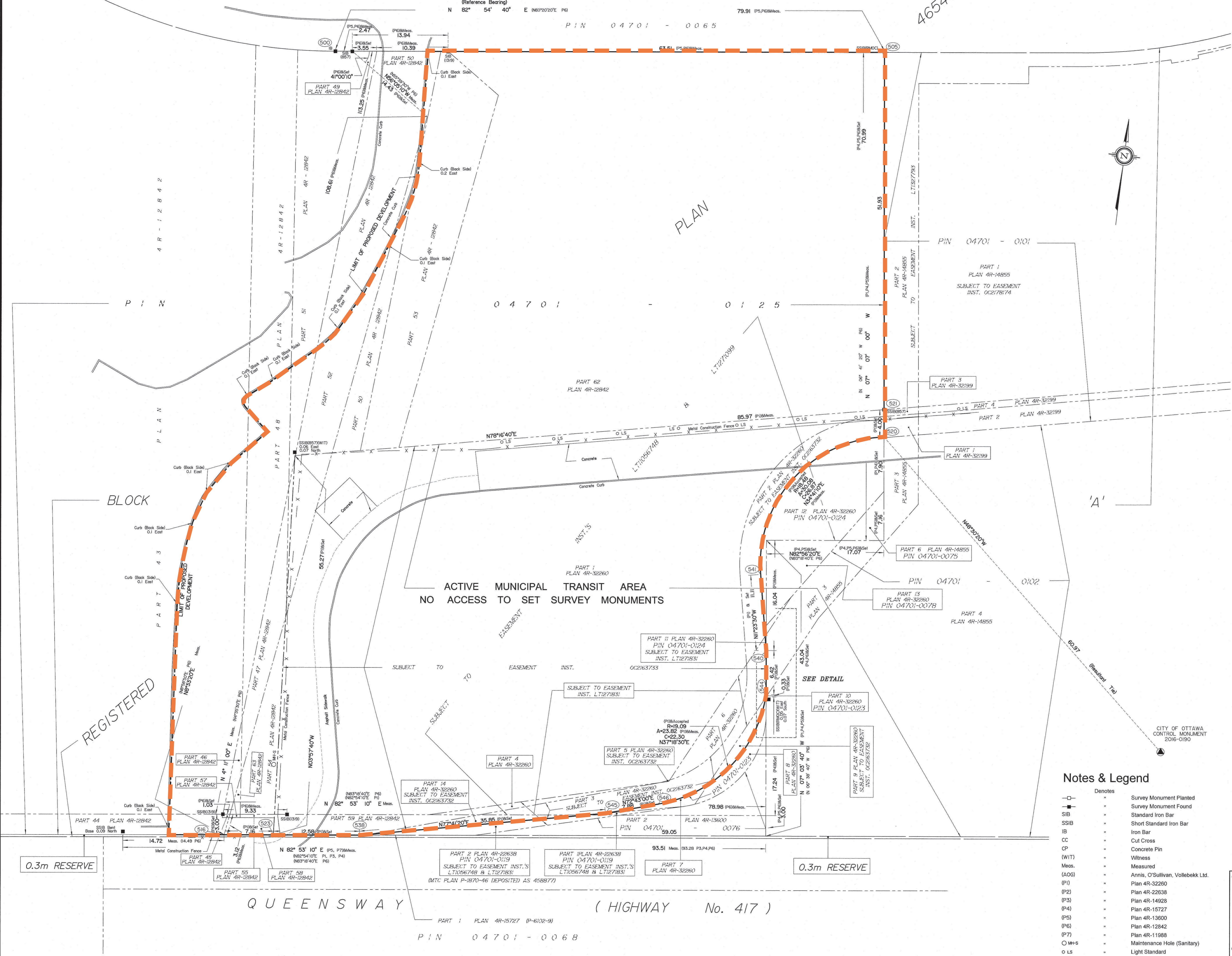
**Surveyor's Certificate**  
 I CERTIFY THAT:  
 1. This survey and plan are correct and in accordance with the Surveys Act and the Surveyors Act and the regulations made under them.  
 2. The survey was completed on the 22nd day of October, 2021.  
 Date: Dec 9/21  
 Andrew Sheip  
 Ontario Land Surveyor

Bearings are grid, derived from the southerly limit of Woodridge Crescent shown to be N82°54'40"E on Plans 4R-13600 and 4R-11988 and are referenced to MTM Zone 9 (76°30' West Longitude) NAD-83 (original).

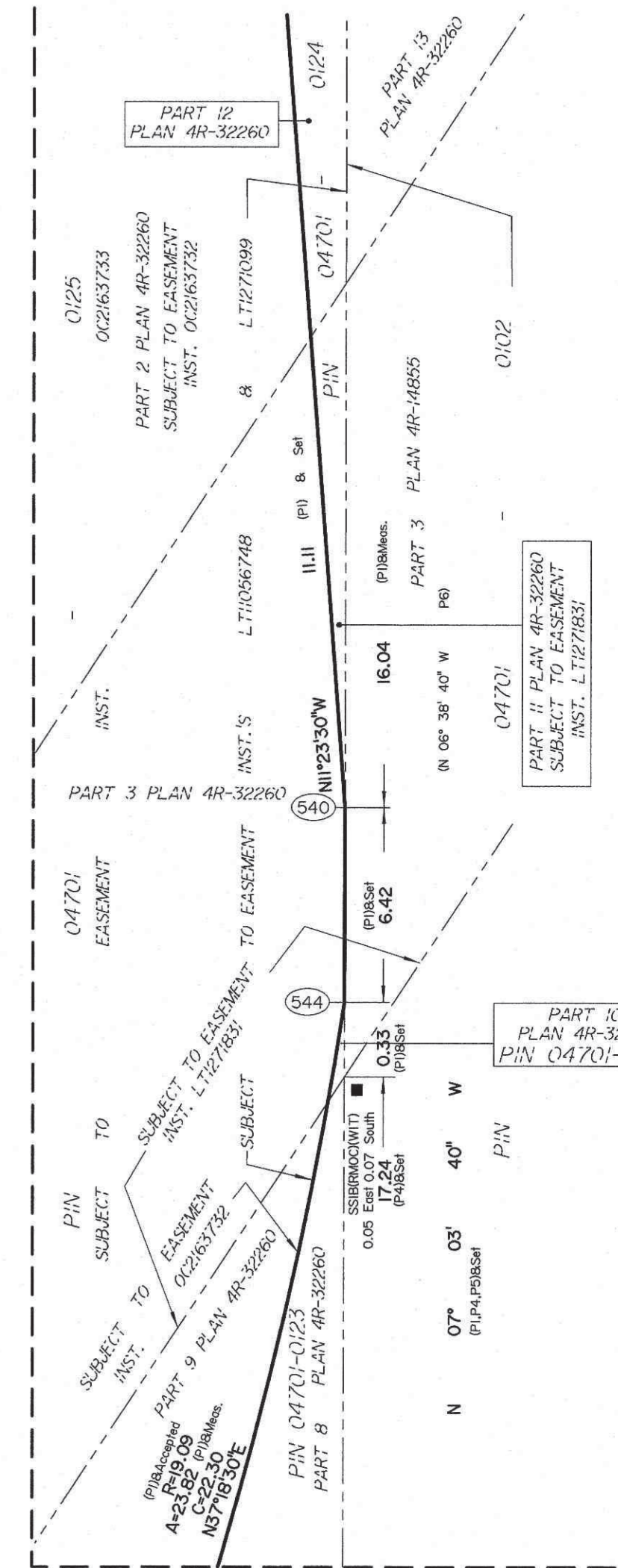
For comparison purposes, bearings shown on Plan P6 are astronomic bearings.

Coordinates are referenced to MTM Zone 9 (76°30' West Longitude) NAD-83 (original).

COORDINATE TABLE		
POINTNUMBER	NORTHING	EASTING
500	5 023 160.272	358 730.745
505	5 023 170.133	358 810.039
516	5 023 045.128	358 729.006
520	5 023 114.637	358 816.968
521	5 023 118.606	358 816.472
523	5 023 046.015	358 736.110
538	5 023 047.573	358 748.593
540	5 023 081.669	358 803.867
541	5 023 092.559	358 801.673
544	5 023 075.298	358 804.656
545	5 023 055.221	358 783.617
546	5 023 057.562	358 791.141
2016-0190	5 023 074.246	358 862.633



**DETAIL Not to Scale**



**Notes & Legend**

- Denotes**
- Survey Monument Planted
  - Survey Monument Found
  - SIB Standard Iron Bar
  - SSIB Short Standard Iron Bar
  - IB Iron Bar
  - CC Cut Cross
  - CP Concrete Pin
  - (WIT) Witness
  - Meas. Measured
  - (AOG) Annis, O'Sullivan, Vollebek Ltd.
  - (P1) Plan 4R-32260
  - (P2) Plan 4R-22638
  - (P3) Plan 4R-14928
  - (P4) Plan 4R-15727
  - (P5) Plan 4R-13600
  - (P6) Plan 4R-12842
  - (P7) Plan 4R-11988
  - o MHS Maintenance Hole (Sanitary)
  - o LS Light Standard

ASSOCIATION OF ONTARIO  
 LAND SURVEYORS  
 PLAN SUBMISSION FORM  
 V-19593

THIS PLAN IS NOT VALID UNLESS  
 IT IS AN EMBOSSED ORIGINAL  
 COPY ISSUED BY THE SURVEYOR  
 In accordance with  
 Regulation 1029, Section 29 (3)

© Annis, O'Sullivan, Vollebek Ltd. 2021. THIS PLAN IS PROTECTED BY COPYRIGHT  
**ANNIS, O'SULLIVAN, VOLLEBEK LTD.**  
 14 Concourse Gate, Suite 500  
 Nepean, Ont. K2E 7S5  
 Phone: (613) 727-0850 / Fax: (613) 727-1079  
 Email: nepean@aosvl.com

Job No. 2230-21 Foreclosed P/B A. 465465 D. 04