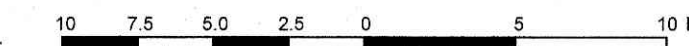


PART OF BLOCK 6 AND PART OF COMMERCIAL DRIVE (As Closed by By-Law 90-92, Inst. LT789196) REGISTERED PLAN 50M-165 CITY OF OTTAWA

Prepared by Annis, O'Sullivan, Vollebakk Ltd.

Scale 1:250



Metric DISTANCES SHOWN ON THIS PLAN ARE IN METRES AND CAN BE CONVERTED TO FEET BY DIVIDING BY 0.3048

Surveyor's Certificate

I CERTIFY THAT: 1. This survey and plan are correct and in accordance with the Surveys Act and the regulations made under them. 2. The survey was completed on the 29th day of November, 2021.

Date: Nov 29/21 T. Hartwick Ontario Land Surveyor

Notes & Legend

Table with 2 columns: Denotes and Description. Includes symbols for Survey Monument Planted, Standard Iron Bar, Short Standard Iron Bar, Iron Bar, Witness, Measured, Annis, O'Sullivan, Vollebakk Ltd., Plan 4R-24551, Plan 4R-21938, Deciduous Tree, Coniferous Tree, Fire Hydrant, Water Valve, Water Stand Post, Maintenance Hole (Storm Sewer), Maintenance Hole (Sanitary), Maintenance Hole (Hydro), Maintenance Hole (Unidentified), Valve Chamber (Watermain), Catch Basin, Hydro Transformer on Concrete Pad, Bottom of Slope, Top of Slope, Chain Link Fence, Handrail, Diameter, Location of Elevations, Top of Concrete Curb/Wall Elevation, Stone Retaining Wall, Timber Retaining Wall, Centreline, Property Line, Light Standard, Sign, Edge of Asphalt, Top of Grate, Refuse Container, Bollard.

ASSOCIATION OF ONTARIO LAND SURVEYORS PLAN SUBMISSION FORM V-19558 THIS PLAN IS NOT VALID UNLESS IT IS AN EMBOSSED ORIGINAL COPY ISSUED BY THE SURVEYOR. In accordance with Regulation 1026, Section 29 (3).

SITE AREA = 8995 m²

Distances shown on this plan are ground distances and can be converted to grid distances by multiplying by the combined scale factor of 0.99996.

Bearings are grid, derived from Can-Net 2016 Real Time Network GPS observations and are referenced to Specified Control Points 01919680184 and 019198434761, MTM Zone 9 (76°30' West Longitude) NAD-83 (original).

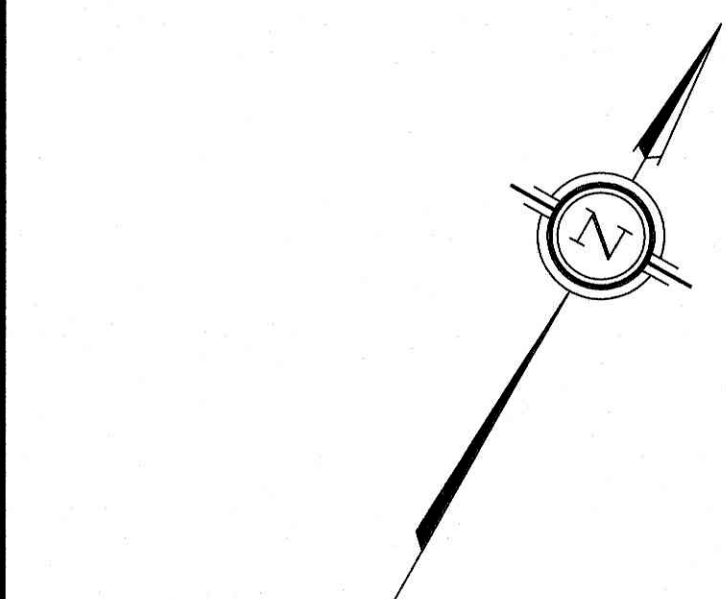
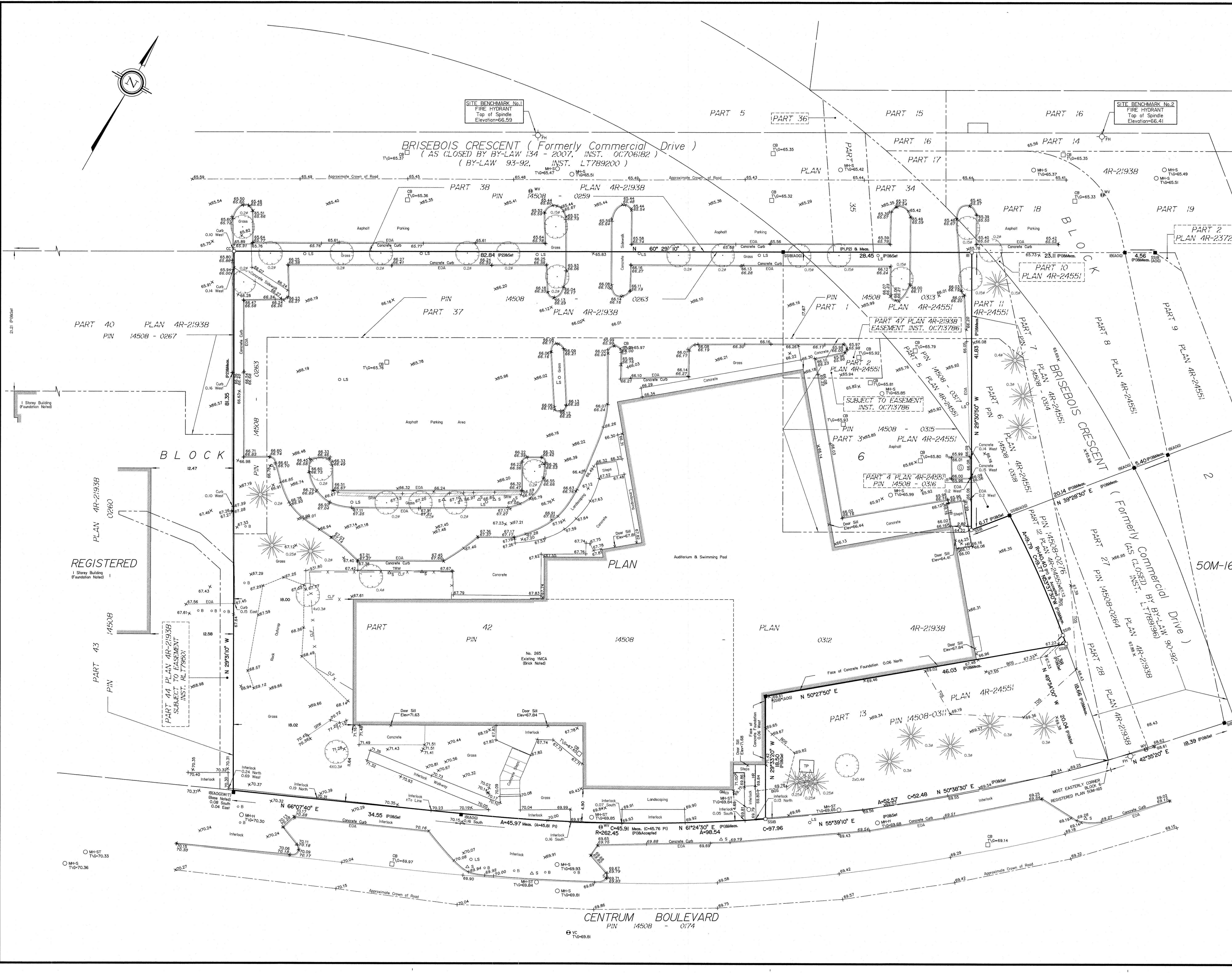
ELEVATION NOTES

1. Elevations shown are geodetic and are referred to the CGVD28 geodetic datum and are derived from City of Ottawa Monument 001196530208 having a published elevation of 59.38 metres. 2. It is the responsibility of the user of this information to verify that the job benchmark has not been altered or disturbed and that its relative elevation and description agrees with the information shown on this drawing.

UTILITY NOTES

1. This drawing cannot be accepted as acknowledging all of the utilities and it will be the responsibility of the user to contact the respective utility authorities for confirmation. 2. Only visible surface utilities were located. 3. A field location of underground plant by the pertinent utility authority is mandatory before any work involving breaking ground, probing, excavating etc.

© Annis, O'Sullivan, Vollebakk Ltd. 2021. THIS PLAN IS PROTECTED BY COPYRIGHT. ANNIS, O'SULLIVAN, VOLLEBAKK LTD. 14 Concourse Gate, Suite 500 Nepean, Ont. K2E 7J6 Phone: (613) 727-0850 / Fax: (613) 727-1079 Email: Nepean@osvl.com



1 Storey Building Foundation Noted