

TOPOGRAPHIC SKETCH OF  
1900-2000 City Park Drive being

PART OF BLOCK 2  
REGISTERED PLAN 4M-648  
CITY OF OTTAWA  
Prepared by Annis, O'Sullivan, Vollebek Ltd.  
Field work completed March 3, 2023

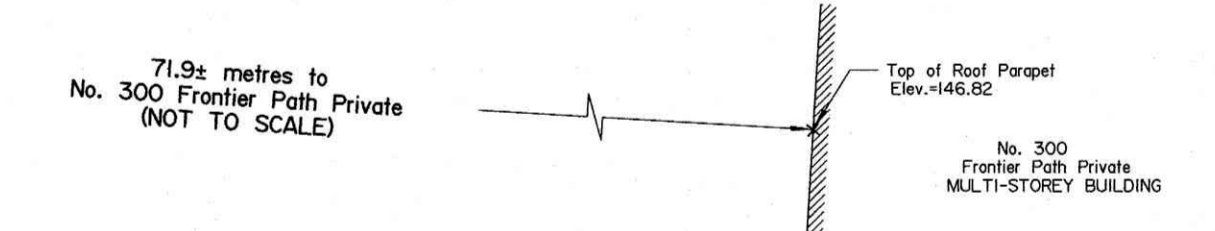
Scale 1:250  
1 2.5 5 7.5 10 Metres

Metric  
DISTANCES SHOWN ON THIS PLAN ARE IN METRES AND  
CAN BE CONVERTED TO FEET BY DIVIDING BY 0.3048

March 10 2023  
Date  
E.H. Herweyer O.L.S.

Notes & Legend

- Denotes
- Deciduous Tree
  - FH Fire Hydrant
  - WV Water Valve
  - MH-ST Maintenance Hole (Storm Sewer)
  - MH-S Maintenance Hole (Sanitary)
  - MH-H Maintenance Hole (Hydro)
  - VC Valve Chamber (Watermain)
  - CB Catch Basin
  - LS Light Standard
  - H-T Hydro Transformer
  - TOS Top of Slope
  - C/L Centreline
  - Ø Diameter
  - Location of Elevations
  - Top of Concrete Curb / Retaining Wall Elevation
  - B Rollard
  - S Sign
  - BH Borehole
  - SP Water Stand Post
  - CLF Chain Link Fence



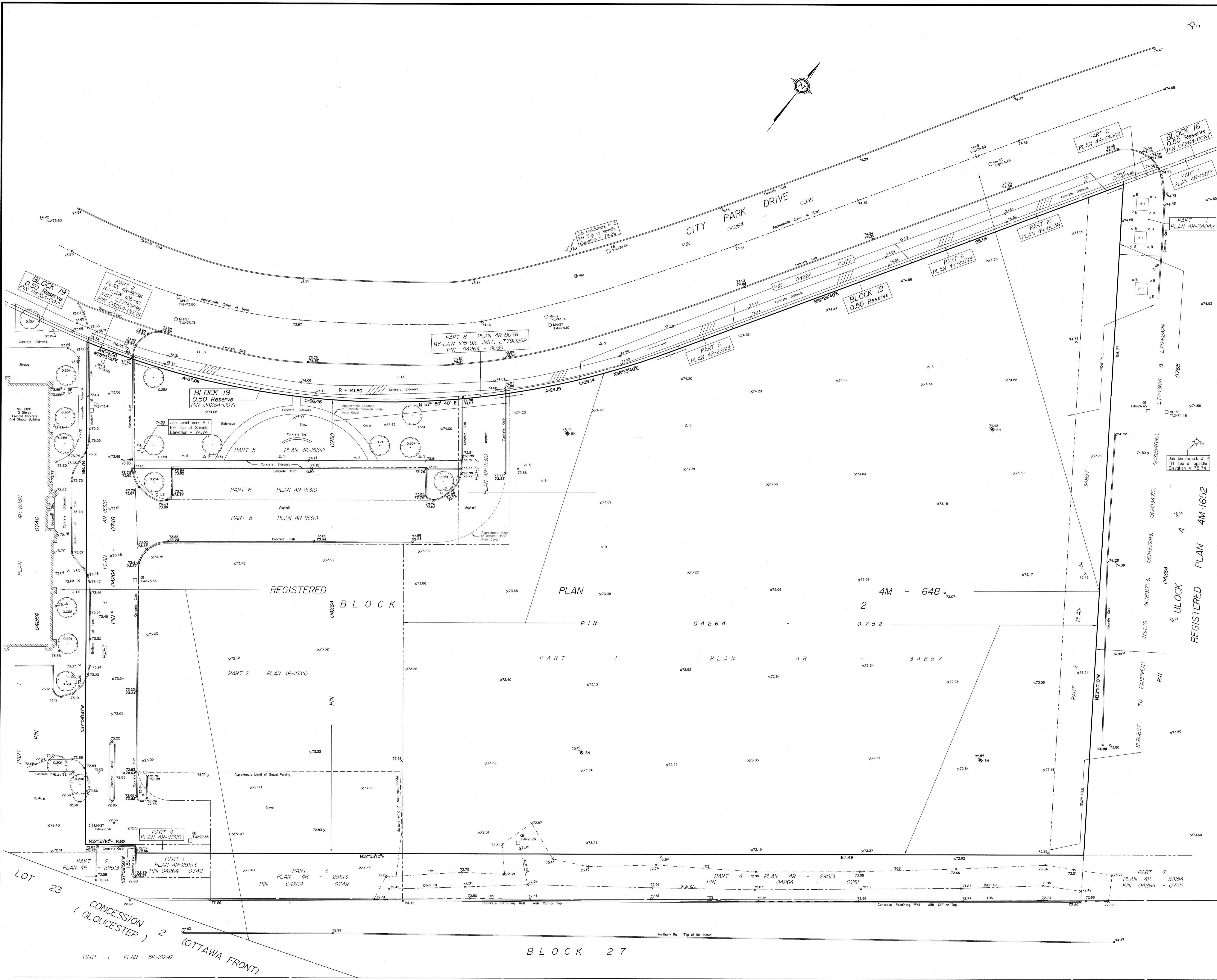
Bearings are grid, derived from Can-Net 2016 Real Time Network  
GPS observations, MTM Zone 9 (76°30' West Longitude) NAD-83  
(original).

**ELEVATION NOTES**  
1. Elevations shown are geoidic and are referred to the CGVD28 geoidic datum, derived from control monument No. 019680132 having an elevation of 66.127 metres.  
2. It is the responsibility of the user of this information to verify that the job benchmark has not been altered or disturbed and that its relative elevation and description agrees with the information shown on this drawing.

Topographic data was collected under Winter Conditions.  
Snow cover and ice preclude determining location and  
elevation of some topographical data that is otherwise visible.

SITE AREA = 16431 m<sup>2</sup>

BOUNDARY INFORMATION COMPILED FROM PLANS  
4R-34857, 4R-29513 & 4R-15310



BLOCK 27

REGIONAL ROAD No. 174 (Formerly THE KING'S HIGHWAY No. 17)

DEPOSITED PLAN G54053 (HIGHWAYS PLAN P-3017-9)

LOT 23  
CONCESSION (GLOUCESTER) 2 (OTTAWA FRONT)  
PART 1 PLAN 5R-10292