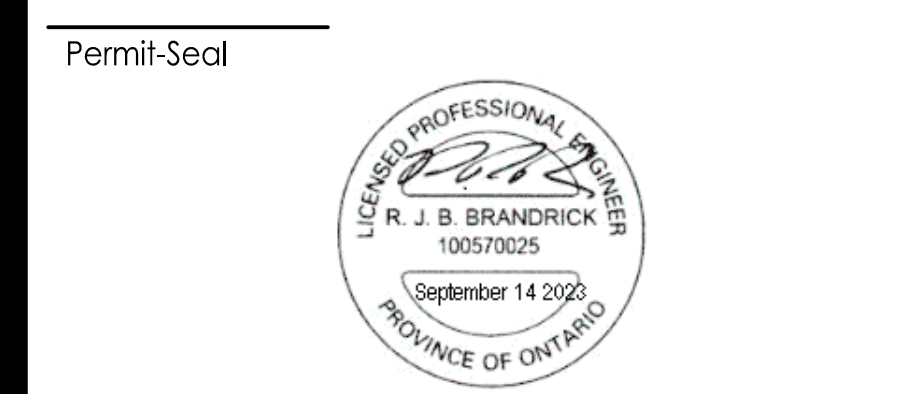


Notes

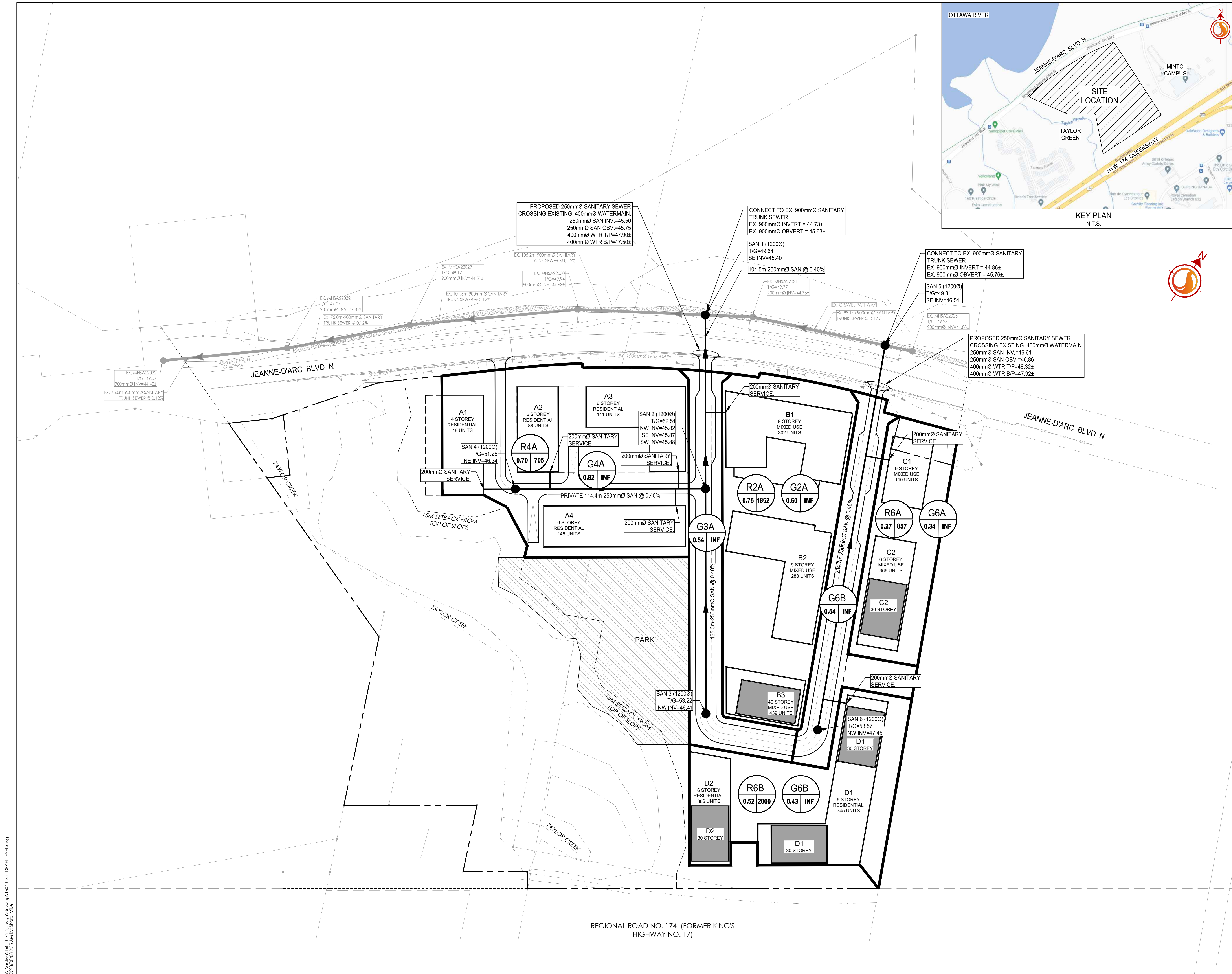
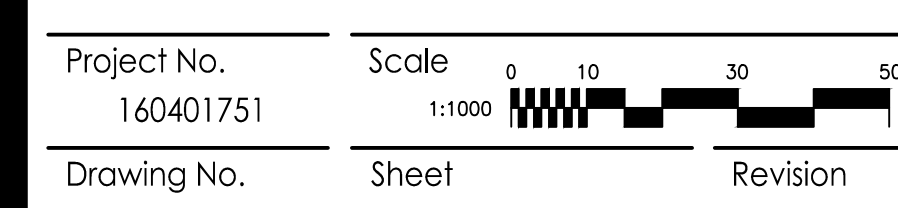
BUILDING STATS	
BUILDING A1 - 18 - UNITS @ 1.8PPU = 32 PEOPLE	
BUILDING A2 - 88 - UNITS @ 1.8PPU = 158 PEOPLE	
BUILDING A3 - 141 - UNITS @ 1.8PPU = 254 PEOPLE	
BUILDING A4 - 145 - UNITS @ 1.8PPU = 261 PEOPLE	
BUILDING B1 - 302 - UNITS @ 1.8PPU = 544 PEOPLE	
BUILDING B2 - 288 - UNITS @ 1.8PPU = 518 PEOPLE	
BUILDING B3 - 439 - UNITS @ 1.8PPU = 790 PEOPLE	
BUILDING C1 - 110 - UNITS @ 1.8PPU = 198 PEOPLE	
BUILDING C2 - 366 - UNITS @ 1.8PPU = 659 PEOPLE	
BUILDING D1 - 745 - UNITS @ 1.8PPU = 1341 PEOPLE	
BUILDING D2 - 366 - UNITS @ 1.8PPU = 659 PEOPLE	
TOTAL POPULATION = 5,414	

Revision	By	Appd.	YY.MM.DD
0	MJS	RB	23.08.08
File Name: 160401751 DRAFT LEVEL.dwg			
	MJS	RB	MJS 23.06.01
	Dwn.	Chkd.	Dgn.
			YY.MM.DD



Client/Project
BRIGIL
98 LOIS STREET
GATINEAU, QC J8T 3R7
PETRIES LANDING III
OTTAWA, ON

Title
OVERALL SANITARY SEWER SYSTEM



W:\active\160401751\design\dwg\160401751 DRAFT LEVEL.dwg
23/08/23 09:55:25 AM BY: JRB/MS