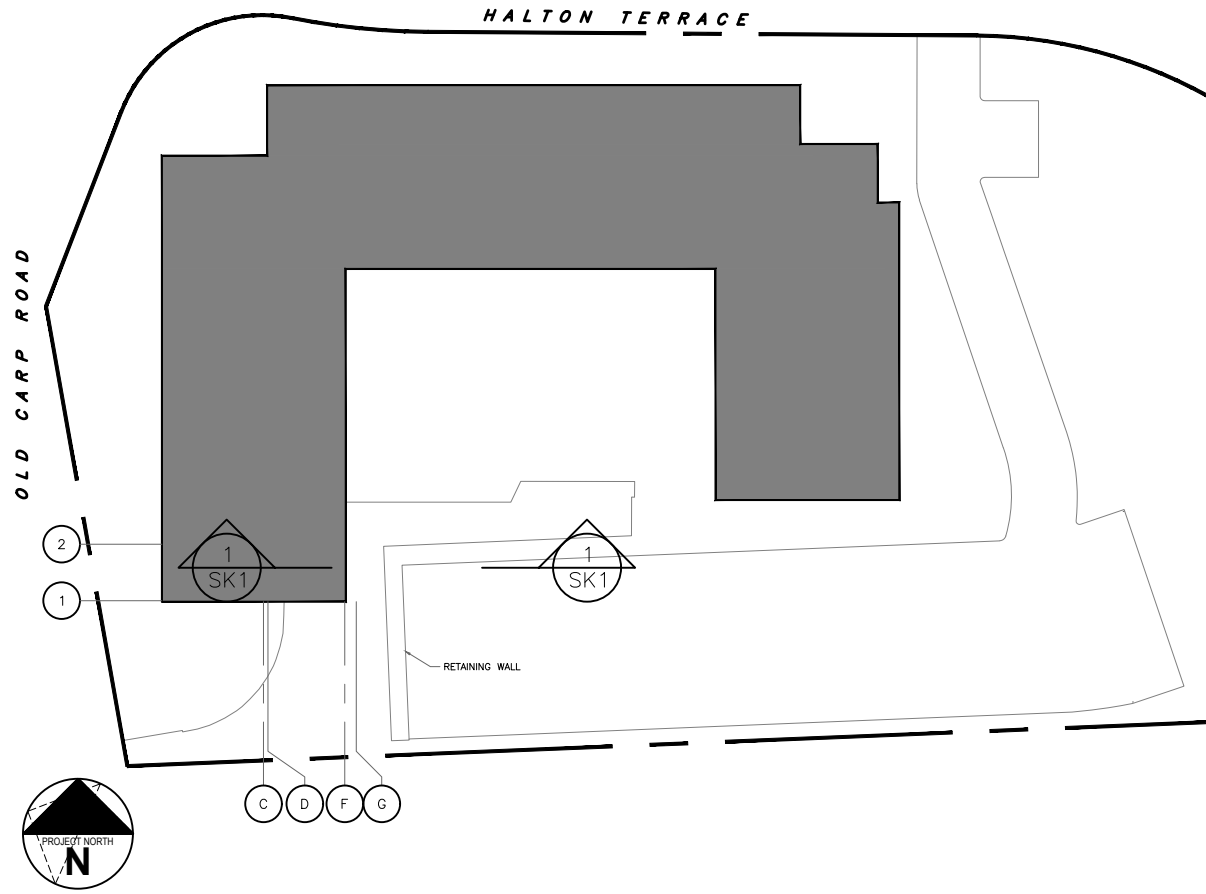
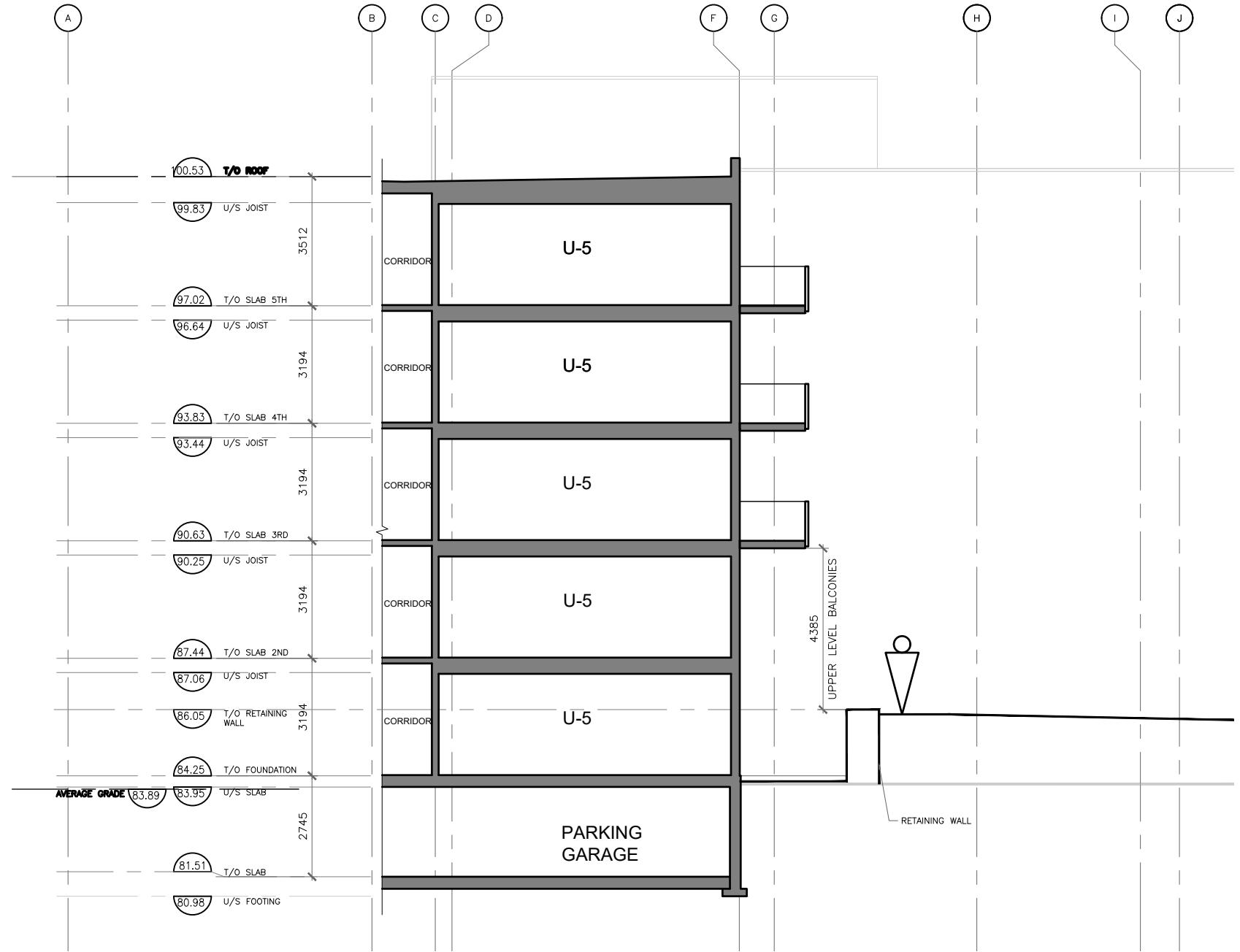


P:\2020\03020_1104-HALTON\2.0 ARCH\2.3 DRAWINGS\2.3.2 MD\2.3.2.5 SECTIONS\231106_HALTON BUILDING SECTIONS_00.dwg - LAYOUT SK1 - FLOT DATE 6-Aug-24 - LAST SAVED BY AD - LAST SAVED DATE August 6, 2024



KEY PLAN
1:750



SECTION @ GRIDLINE F&2
1:150

GENERAL NOTES		
NO	REV DATE	REV DESCRIPTION
1	24/08/06	SUBMISSION FOR OPA
<p>IT IS THE RESPONSIBILITY OF THE CONTRACTOR TO VERIFY ALL DIMENSIONS ON SITE AND REPORT ANY ERRORS AND OMISSIONS TO THE ARCHITECT. ALL CONTRACTORS MUST COMPLY WITH ALL PERTINENT CODES AND BY-LAWS. DO NOT SCALE DRAWINGS. THESE DRAWINGS MAY NOT BE USED FOR CONSTRUCTION UNTIL SIGNED. THIS DRAWING IS THE EXCLUSIVE PROPERTY OF COLIZZA BRUNI ARCHITECTURE INCORPORATED. COPYRIGHT RESERVED.</p>		

PROJECT NAME
**1104 HALTON
86 UNIT APARTMENT
BUILDING**

OTTAWA, ON

DRAWING TITLE
**BUILDING
SECTION**

SCALE
AS NOTED

DRAWN BY

DATE
8/1/24

PROJECT NO.
030-20

DRAWING NO.

SK1

COLIZZA BRUNI
architecture

76 CHAMBERLAIN AVE • OTTAWA • ONTARIO • K1S 1V9
T 613.236.2944 • F 613.236.6777 • www.colizzabruni.com