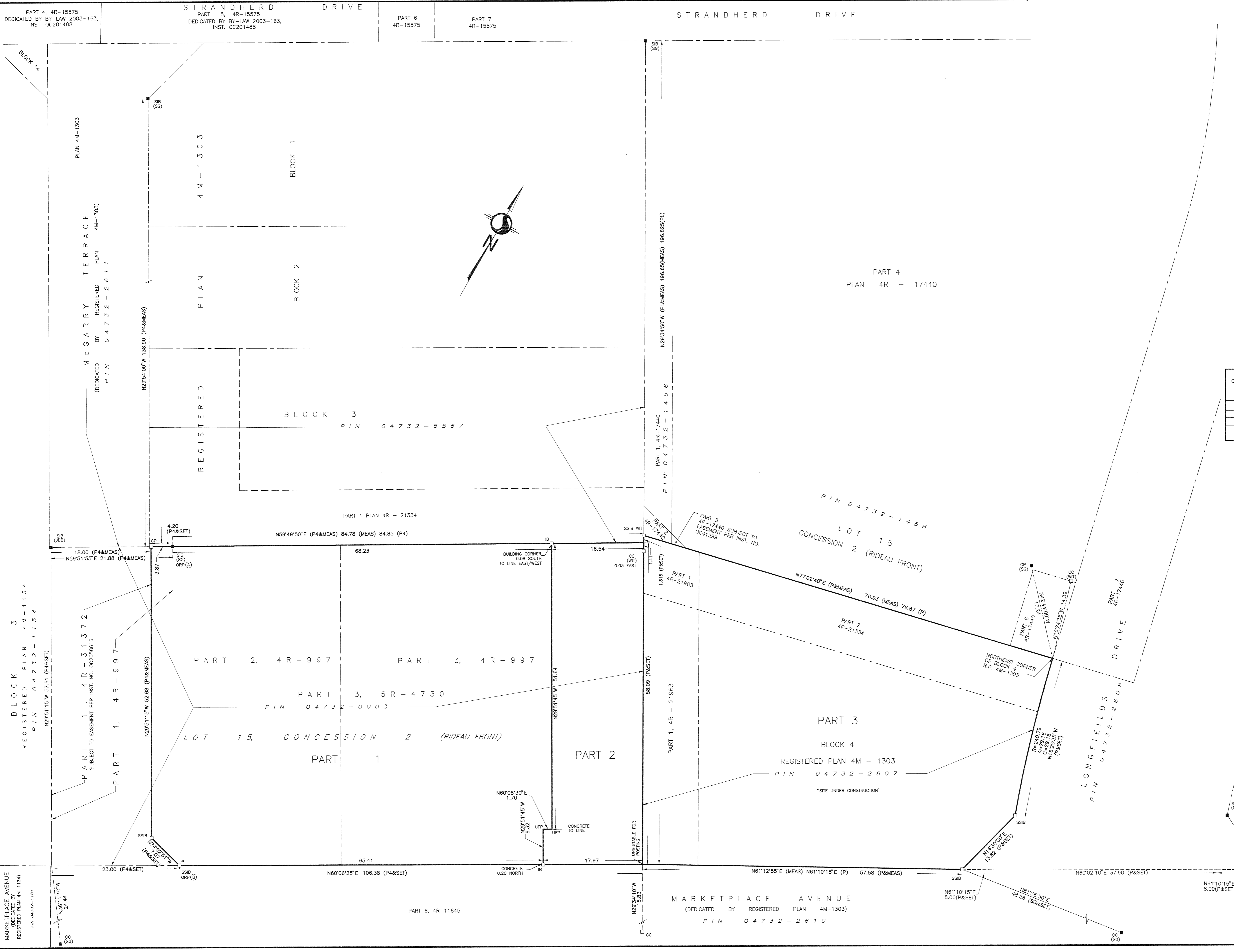


37 October 2020, 1:08 PM



I REQUIRE THIS PLAN TO BE DEPOSITED UNDER THE LAND TITLES ACT.

**PLAN 4R-33239**  
RECEIVED AND DEPOSITED

DATE: *Oct 30, 2020*

DATE: *Nov 02, 2020*

*Francis Lau*  
FRANCIS LAU  
ONTARIO LAND SURVEYOR

*Francis Lau*  
FRANCIS LAU  
REGISTRAR FOR THE LAND TITLES DIVISION  
OF OTTAWA-CARLETON No. 4

SCHEDULE			
PART	LOT/BLOCK	CONCESSION	PIN
1	PART OF 15	2 (RIDEAU FRONT)	PART OF 04732-0003
2			
3	ALL OF BLOCK 4	R.P. 4M-1303	ALL OF 04732-2607

PARTS 1 & 2 COMPRISES PART OF PIN 04732-0003  
PART 3 COMPRISES ALL OF PIN 04732-2607

PLAN OF SURVEY OF

**PART OF LOT 15  
CONCESSION 2 (RIDEAU FRONT)**  
(GEOGRAPHIC TOWNSHIP OF NEPEAN)  
AND  
**BLOCK 4  
REGISTERED PLAN 4M-1303  
CITY OF OTTAWA**

Scale 1:300

**METRIC CONVERSION**  
DISTANCES AND COORDINATES SHOWN ON THIS PLAN ARE IN METRES AND CAN BE CONVERTED TO FEET BY DIVIDING BY 0.3048

**GRID SCALE CONVERSION**  
DISTANCES ARE GROUND AND CAN BE CONVERTED TO GRID BY MULTIPLYING BY THE COMBINED SCALE FACTOR OF 0.999934.

**BEARING NOTE**  
BEARINGS ARE GRID, DERIVED FROM THE CAN-NET VRS NETWORK GPS OBSERVATIONS ON NCC HORIZONTAL CONTROL MONUMENTS 19773035 AND 19680191, CENTRAL MERIDIAN, 76° 30' WEST LONGITUDE MTM ZONE 9, NAD83 (ORIGINAL).

19773035 N:5006060.42 E:324888.04  
19680191 N:5033564.26 E:388064.94

OBSERVED REFERENCE POINTS DERIVED FROM THE CAN-NET VRS NETWORK GPS OBSERVATIONS ON NCC HORIZONTAL CONTROL MONUMENTS 19773035 AND 19680191, CENTRAL MERIDIAN, 76° 30' WEST LONGITUDE MTM ZONE 9, NAD83 (ORIGINAL). COORDINATES TO URBAN ACCURACY PER SEC 14(2) OF O.REG. 216/10

ORP ID	NORTHING	EASTING
(A)	5014929.98	364452.34
(B)	5014880.49	364449.00

COORDINATES CANNOT, IN THEMSELVES, BE USED TO RE-ESTABLISH CORNERS OR BOUNDARIES SHOWN ON THIS PLAN.

**LEGEND**

SYMBOL	DENOTES	FOUND MONUMENTS
IB	IRON BAR	SET MONUMENTS
IBP	ROUND IRON BAR	IRON BAR
SIB	STANDARD IRON BAR	ROUND IRON BAR
SSIB	SHORT STANDARD IRON BAR	STANDARD IRON BAR
CC	CUT CROSS	SHORT STANDARD IRON BAR
CP	CONCRETE PIN	CUT CROSS
WIT	WITNESSES	CONCRETE PIN
FIN	PROPERTY IDENTIFICATION NUMBER	WITNESSES
MEAS	MEASURED	PROPERTY IDENTIFICATION NUMBER
PROP	PROPORTIONED	MEASURED
OU	ORIGIN UNKNOWN	PROPORTIONED
SG	STANTEC GEOMATICS LTD.	ORIGIN UNKNOWN
ORP	OBSERVED REFERENCE POINT	STANTEC GEOMATICS LTD.
UFP	UNUSABLE FOR POSTING (CONSTRUCTION)	OBSERVED REFERENCE POINT
P	4M-1303	UNUSABLE FOR POSTING (CONSTRUCTION)
AOG	ANNIS, O'SULLIVAN, VOLLEBEK LTD.	4M-1303
1697	J.P. SHIPMAN O.L.S.	ANNIS, O'SULLIVAN, VOLLEBEK LTD.
RS	ROCK BAR	J.P. SHIPMAN O.L.S.
P2	PLAN 58-4619	ROCK BAR
P3	PLAN 58-4730	P2
UDB	J.D. BARNES LTD.	P3
P4	PLAN 4R-31372	UDB

**SURVEYOR'S CERTIFICATE**

I CERTIFY THAT:

- THIS SURVEY AND PLAN ARE CORRECT AND IN ACCORDANCE WITH THE SURVEYS ACT, THE SURVEYORS ACT AND THE LAND TITLES ACT AND THE REGULATIONS MADE UNDER THEM.
- THE SURVEY WAS COMPLETED ON THE 18th DAY OF SEPTEMBER, 2020.

DATE: *Oct 30, 2020*

*Francis Lau*  
FRANCIS LAU  
ONTARIO LAND SURVEYOR

BLOCK 5  
REGISTERED PLAN 4M - 1303

MARKETPLACE AVENUE  
(DEDICATED BY REGISTERED PLAN 4M-1134)  
PIN 04732-1154

MARKETPLACE AVENUE  
(DEDICATED BY REGISTERED PLAN 4M-1303)  
PIN 04732-2610

**Stantec Geomatics Ltd.**  
CANADA AND ONTARIO LAND SURVEYORS  
1331 CLYDE AVENUE, SUITE 400  
OTTAWA, ONTARIO, K2C 3G4  
TEL. (613) 722-4420 FAX. (613) 722-2799  
stantec.com

DRAWN: TM1 CHECKED: CT PM: CT FIELD: KC/AW PROJECT No.: 161613799-214