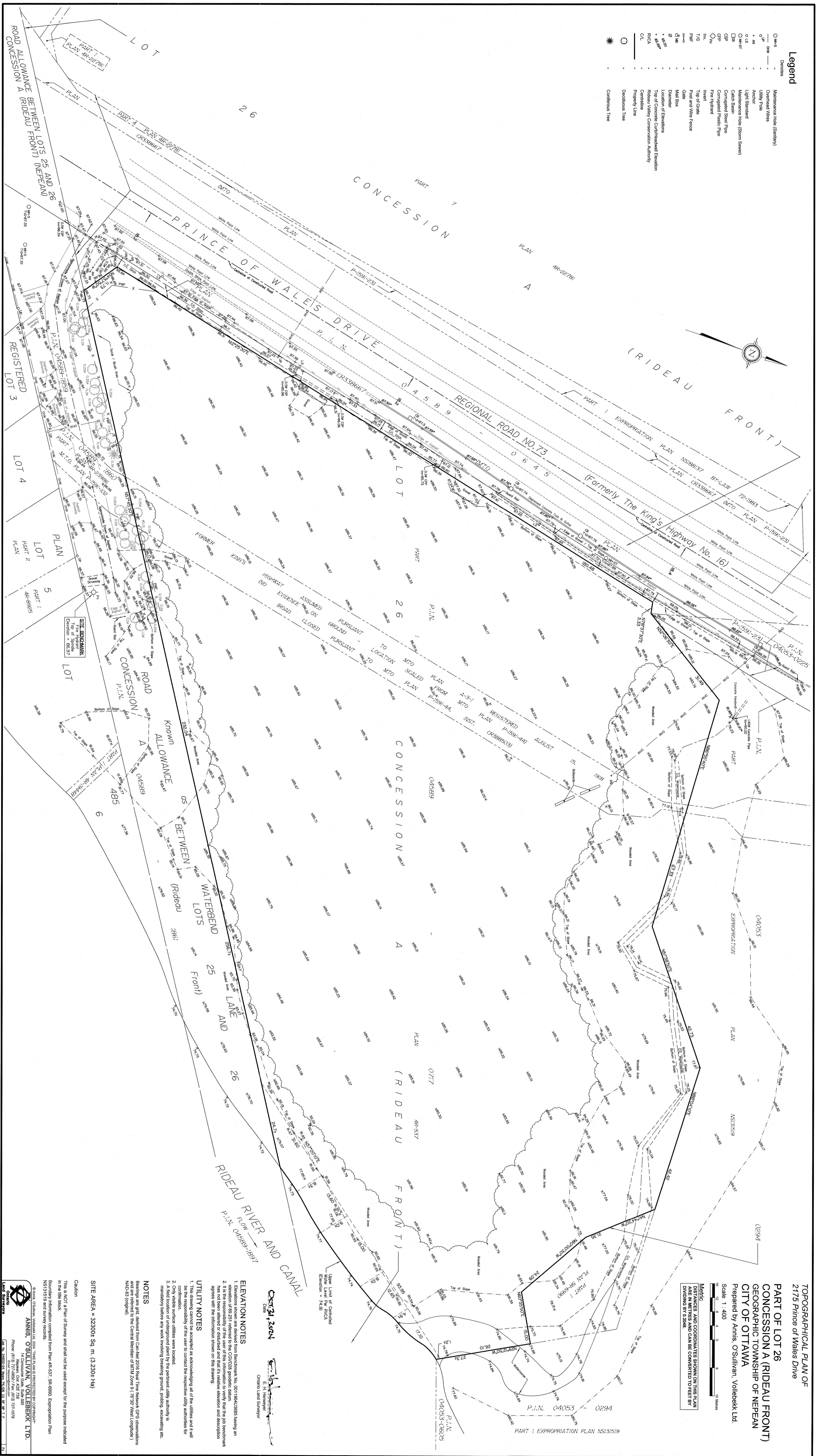
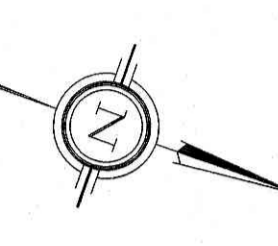


Legend

O 4x5	Demolition
--- 6" 1"	Maintenance Hole (Sanitary)
--- 6" 1"	Overhead Wires
--- 6" 1"	Utility Pole
--- 6" 1"	Anchor
○ 1.5	Light Standard
○ 4x5	Maintenance Hole (Storm Sewer)
□ 1.5	Catch Basin
○ 6" 1"	Corrugated Steel Pipe
○ 6" 1"	Corrugated Plastic Pipe
○ 6" 1"	Fire Hydrant
○ 6" 1"	Invert
○ 6" 1"	Top of Gate
○ 6" 1"	Post and Wire Fence
○ 6" 1"	Gate
○ 6" 1"	Metal Box
○ 6" 1"	Diameter
○ 6" 1"	Location of Elevations
○ 6" 1"	Top of Concrete Curbheadwall Elevation
○ 6" 1"	Rideau Valley Conservation Authority
○ 6" 1"	Property Line
○ 6" 1"	Deciduous Tree
○ 6" 1"	Coniferous Tree



TOPOGRAPHICAL PLAN OF
2175 Prince of Wales Drive
PART OF LOT 26
CONCESSION A (RIDEAU FRONT)
GEOGRAPHIC TOWNSHIP OF NEPEAN
CITY OF OTTAWA
Prepared by Annis O'Sullivan, Vollebæk Ltd.
Scale 1: 400

Metric and coordinates shown on this plan are in meters and can be converted to feet by dividing by 0.3048.

ELEVATION NOTES
1. This drawing is based on the ground survey, however, an elevation of 82.25 is referred to the CGVD25 geoid datum. It is the responsibility of the user of this information to verify that the benchmark has not been altered or disturbed and that its relative elevation and description agrees with the information shown on this drawing.

UTILITY NOTES
1. This drawing cannot be accepted as acknowledging all of the utilities and it will be the responsibility of the user to contact the respective utility authorities for confirmation of the location of all utilities. Only visible surface utilities were located.
2. Only visible surface utilities were located.
3. A field location of underground plant by the pertinent utility authority is mandatory before any work involving breaking ground, probing, excavating, etc.

NOTES
Bearings are given from CanMet 2016 Real Time Network GPS observations and are referred to the Central Meridian of MTM Zone 9 (75°30' West longitude) NAD83 (original).

SITE AREA = 32300± Sq. m (3230± Ha)

ANNIS O'SULLIVAN, VOLLEBÆK LTD.
ANNIS O'SULLIVAN, VOLLEBÆK LTD.
171 Meadowood Drive
Ottawa, Ontario K2E 7S8
Phone: (613) 271-0800 / Fax: (613) 271-0709
E-mail: annis@annisvollebæk.com
URL: www.annisvollebæk.com

DATE: Oct 21, 2024
DRAWN BY: