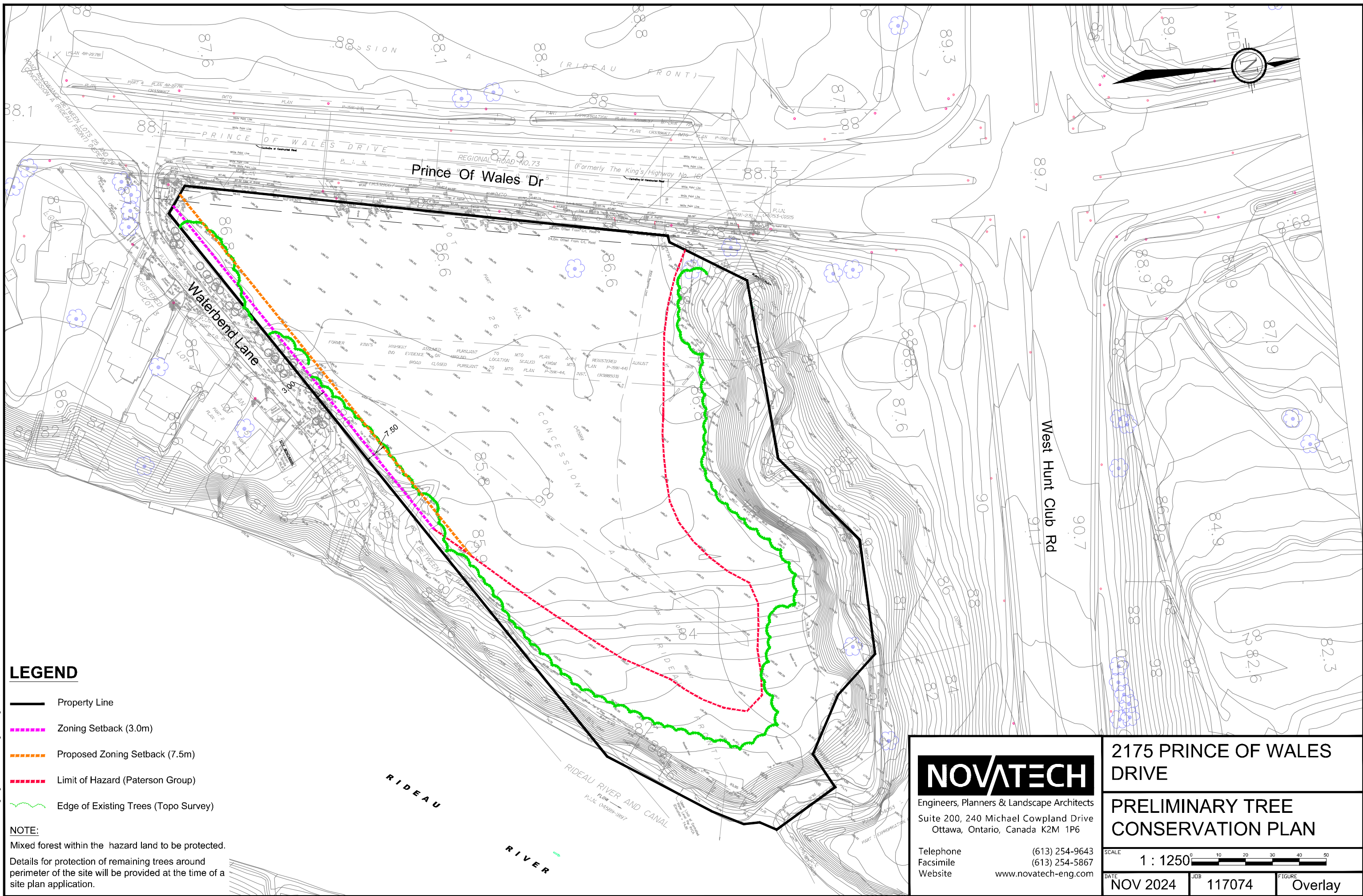







M:\2017\117074\CAD\Planning\Figures\117074-Figure.dwg, GS, Nov 08, 2024 - 10:09am, wslfss



LEGEND

-  Property Line
-  Zoning Setback (3.0m)
-  Proposed Zoning Setback (7.5m)
-  Limit of Hazard (Paterson Group)
-  Edge of Existing Trees (Topo Survey)

NOTE:
 Mixed forest within the hazard land to be protected.
 Details for protection of remaining trees around perimeter of the site will be provided at the time of a site plan application.

NOVATECH

Engineers, Planners & Landscape Architects
 Suite 200, 240 Michael Cowpland Drive
 Ottawa, Ontario, Canada K2M 1P6

Telephone (613) 254-9643
 Facsimile (613) 254-5867
 Website www.novatech-eng.com

2175 PRINCE OF WALES DRIVE

PRELIMINARY TREE CONSERVATION PLAN

SCALE 1 : 1250 

DATE NOV 2024 JOB 117074 FIGURE Overlay