

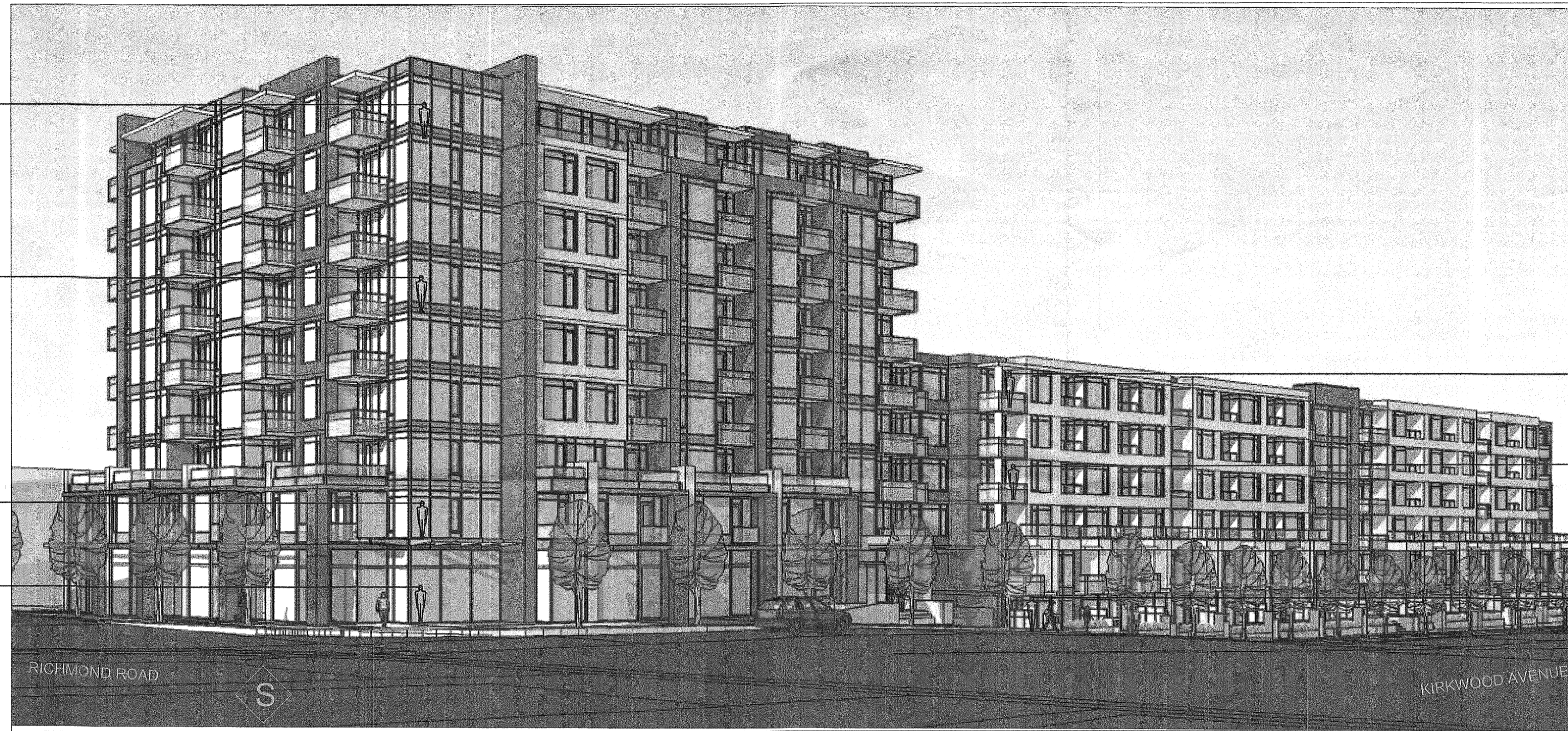
NOTE: PROFILE DRAWING IS NOT TO SCALE AND IS FOR REPRESENTATION PURPOSES ONLY.

R4 NINTH FLOOR (RES)  
R<sub>4</sub>=26.5m

R3 SIXTH FLOOR (RES)  
R<sub>3</sub>=17.5m

R2 SECOND FLOOR (RES)  
R<sub>2</sub>=5.5m

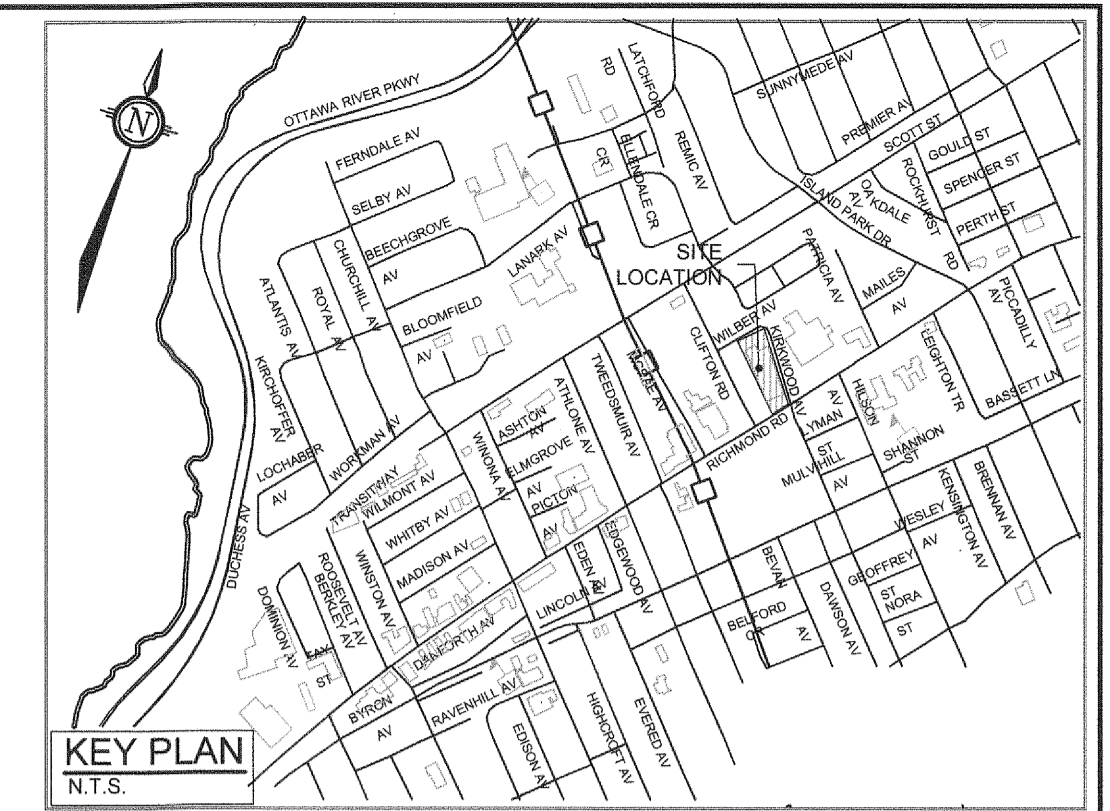
R1 GROUND FLOOR (COMM)  
R<sub>1</sub>=1.5m. (GRND ELEV=65.8m)



SIXTH FLOOR (RES)  
R<sub>11</sub>=16.5m

FORTH FLOOR (RES)  
R<sub>10</sub>=13.7m

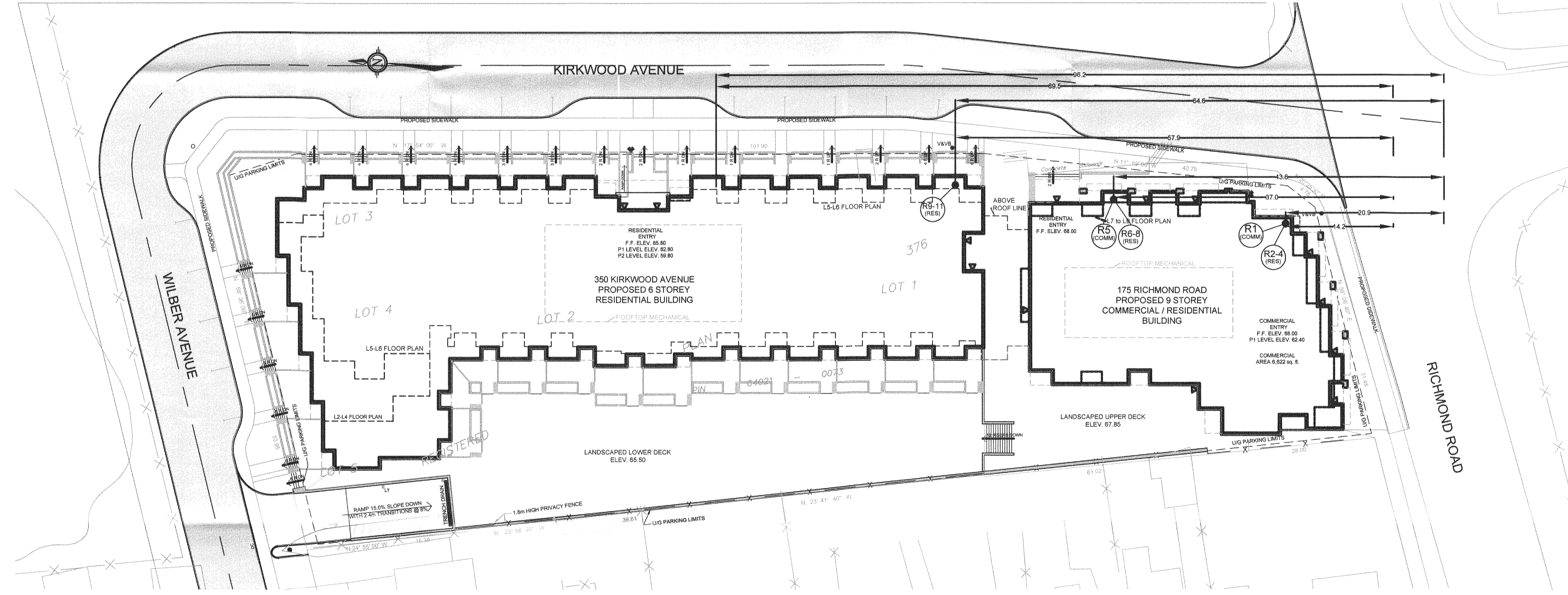
GROUND FLOOR (RES)  
R<sub>9</sub>=1.5m. (GRND ELEV=68.0m)



KEY PLAN  
N.T.S.

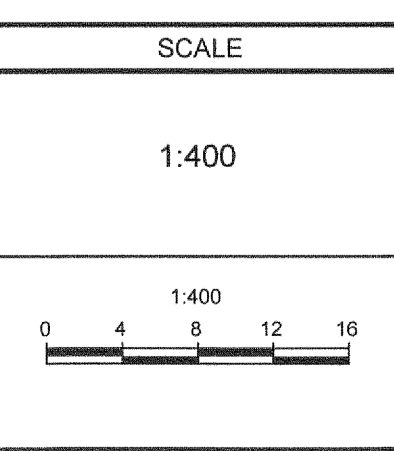
LEGEND

- APPROXIMATE LOCATION OF NOISE SOURCE
- RECEIVER LOCATION
- GRND FLOOR, COMMERCIAL RECEIVER - ONE
- SECOND FLOOR, RESIDENTIAL RECEIVER - TWO



NOTE:  
THE POSITION OF ALL POLE LINES, CONDUITS, WATERMANS, SEWERS AND OTHER UNDERGROUND AND OVERGROUND UTILITIES AND STRUCTURES IS NOT NECESSARILY SHOWN ON THE CONTRACT DRAWINGS, AND WHERE SHOWN, THE ACCURACY OF THE POSITION OF SUCH UTILITIES AND STRUCTURES IS NOT GUARANTEED. BEFORE STARTING WORK, DETERMINE THE EXACT LOCATION OF ALL SUCH UTILITIES AND STRUCTURES AND ASSUME ALL LIABILITY FOR DAMAGE TO THEM.

No.	REVISION	DATE	BY
1	ISSUED FOR CITY APPROVAL	SEP/30/2011	GJM



DESIGN	GJM
CHECKED	GJM
DRAWN	NECL
CHECKED	KM
APPROVED	GJM

FOR REVIEW ONLY

**NOVATECH**  
ENGINEERING CONSULTANTS LTD.  
ENGINEERS & PLANNERS  
Suite 200, 240 Michael Cowpland Drive  
Ottawa, Ontario, Canada  
K2M 0P6  
Telephone: (613) 254-9643  
Facsimile: (613) 254-5867  
Email: novainfo@novatech-eng.com

LOCATION CITY OF OTTAWA (175 RICHMOND ROAD AND 350 KIRKWOOD AVENUE) RICHMOND ROAD DEVELOPMENT	PROJECT No. 111105-00
DRAWING NAME NOISE CONTROL PLAN	REV # 01
	DRAWING No. 111130-NCP

M:\2011\11130\04\Design\GJM\11130-0103\_0103\_11130-0103\_11130-0103.dwg, NCP (S.A.), 19/09/2011 5:47:28 PM, mcdonald, HP-11130-0103.dwg, Overlaid, A1 (portable)