

### LANDSCAPE SPECIFICATIONS

#### GENERAL

- CONTRACTOR TO CHECK ALL QUANTITIES
- REPORT ANY DISCREPANCIES TO THE LANDSCAPE ARCHITECT
- THE QUANTITIES INDICATED ON THE PLAN SHALL BE THE TOTALS OF THE PLANT LIST
- DELIVERY AND INSPECTION
- SPRAY ALL PLANT MATERIAL WITH ANTI-DESCICANT PRIOR TO TRANSPORT
- KEEP ALL ROOTS AND ROOTBALLS MOST PRIOR TO PLANTING
- OBTAIN LANDSCAPE ARCHITECT'S APPROVAL ON DELIVERY, PRIOR TO COMMENCEMENT OF PLANTING WORK
- APPROVAL OF PLANT MATERIAL PRIOR TO PLANTING, ARCHITECT AND CLIENT'S APPROVAL AFTER WRITTEN APPROVAL OF THE CONSULTANT
- ALL MATERIAL MUST CONFORM TO THE SIZES SHOWN ON THE PLANT LIST, EXCEPT WHERE APPROVED BY THE CONSULTANT
- LARGER PLANTS WILL NOT INCREASE THE CONTRACT PRICE
- BE REJECTED AND TREES SHALL CONFORM TO THE PRESENT STANDARDS OF THE CANADIAN NURSERY TRADES ASSOCIATION FOR SIZE AND SPECIES
- TREES ARE TO BE NURSERY GROWN, UNLESS PROPER CULTURAL CONDITIONS, IN PARTICULAR CONTROL, AND BRANCH AND ROOT PRUNING, ARE TO HAVE STRAIGHT STURDY TRUNKS.
- TREES ARE TO BE HEALTHY, VIGOROUS, WELL-BEHAVING WITH A STRONG CENTRAL LEADER.
- DECIDUOUS SHADE TREES SHALL BE FREE OF BRANCHES NOT LESS THAN 1.8M ABOVE THE GROUND.

#### PREPARATION AND INSTALLATION

- PREPARE PLANTING BEDS PRIOR TO ARRIVAL OF PLANTS
- EXCAVATE PER PLANTING DETAILS
- PREPARE PLANTING SOIL BY EVENLY MIXING:
  - PLANTING SOIL TO BE A MIXTURE OF:
    - 8 PARTS GOOD QUALITY TOPSOIL
    - 2 PARTS WELL ROTTED HORSE OR COW MANURE
    - 0.58 KILOS BONE MEAL PER CUBIC METRE OF SOIL
  - PLANTING SOIL IS TO BE THOROUGHLY MIXED TO SETTLE
- AT THE COMPLETION OF PLANTING OPERATIONS, REMOVE ALL SURPLUS MATERIAL FROM THE SITE AT NO EXTRA COST
- MAKE GOOD ALL DAMAGE RESULTING FROM PLANTING OPERATIONS AT NO EXTRA COST
- PLANTING OPERATIONS AT NO EXTRA COST BE GUARANTEED FOR A MINIMUM OF TWO YEARS FROM THE ISSUE DATE OF THE CERTIFICATE OF FINAL PERFORMANCE
- ALL PLANTS SHALL BE INSPECTED AT THE END OF THE PLANTING PERIOD AND ANY PLANTS THAT ARE NOT IN HEALTHY VIGOROUS GROWING CONDITION, TO THE CONSULTANT'S APPROVAL, SHALL BE REPLACED AT NO EXTRA CHARGE

#### GUARANTEE AND FINAL INSPECTION

- CONTRACTOR IS RESPONSIBLE FOR LOOKING AFTER THE PLANTS THROUGHOUT THE PLANTING PERIOD
- CONTRACTOR MUST CHECK & VERIFY ALL DIMENSIONS AND CONDITIONS ON THE JOB
- LANDSCAPE ARCHITECT BEFORE PROCEEDING WITH PLANTING OPERATIONS
- CONTRACTOR IS RESPONSIBLE FOR ANY DAMAGE CAUSED TO EXISTING SERVICES WHEN EXCAVATING

#### TOPSOIL

- USE EXCELLENT LIVED TOPSOIL OF FERTILE, FRABLE NATURAL LOAM CONTAINING NOT LESS THAN 4% ORGANIC MATTER FOR CLAY LOAM'S AND 2% MINIMUM ORGANIC MATTER FOR SANDY LOAM'S WITH AN ACIDITY RANGE OF 5.5 TO 7.5 pH. TO ALL TOPSOIL SHALL BE STRIPPED WHERE NECESSARY AND STOCKPILED ON SITE. NO TOPSOIL SHALL BE REMOVED FROM SITE WITHOUT PRIOR WRITTEN CONSENT FROM THE LANDSCAPE ARCHITECT
- CONSTRUCT PERMANENT BERMS, NEW TOPSOIL SHALL CONFORM TO SPECIFICATIONS HEREIN.
- ALL TOPSOIL SHOULD BE FREE OF SUBSOILS, CLAY STONES, ROCKS, EXCESS WATER, FROST AND OTHER EXTENSIBLE MATTER.

#### SOD AND FERTILIZING

- SOD SHALL BE NO. 1 CERTIFIED CULTIVATED TURF GRASS, 50% MERION AND 50% KENTUCKY BLUE SOY SHALL BE GUARANTEED FOR ONE YEAR
- ALL SOD SHALL BE GUARANTEED FOR ONE YEAR
- SOD SHALL CONFORM TO LANDSCAPE ARCHITECT'S GENERAL LANDSCAPE SPECIFICATIONS.
- SOD SHALL BE EVENLY SPREAD OVER SUBGRADE AND LOOSELY COMPACTED TO 150mm
- ALL STONES AND DEBRIS OVER 30mm DIA. SHALL BE REMOVED.

#### IRRIGATION NOTE

CONTRACTOR TO PROVIDE COMPLETE IRRIGATION SYSTEM FOR ALL NEW LANDSCAPED AREAS. PROVIDE CLASS 160 PIPE PVC IRRIGATION SLEEVES UNDER ALL PAVED AREAS. SITE. CONTRACTOR TO PROVIDE SHOP DRAWINGS FOR APPROVAL BY CONSULTANT.

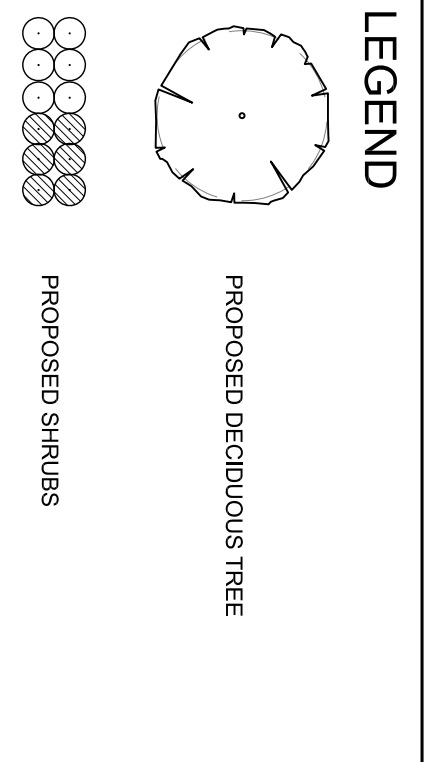
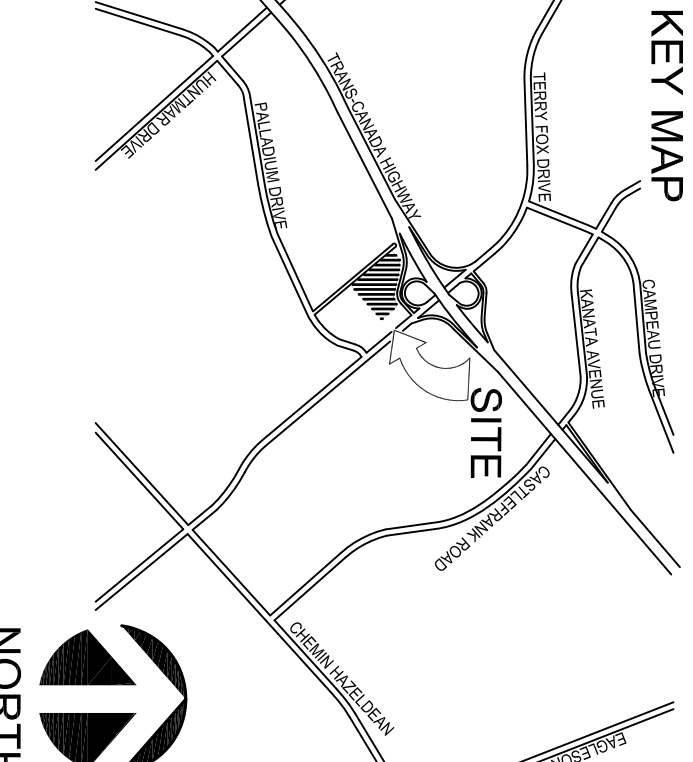
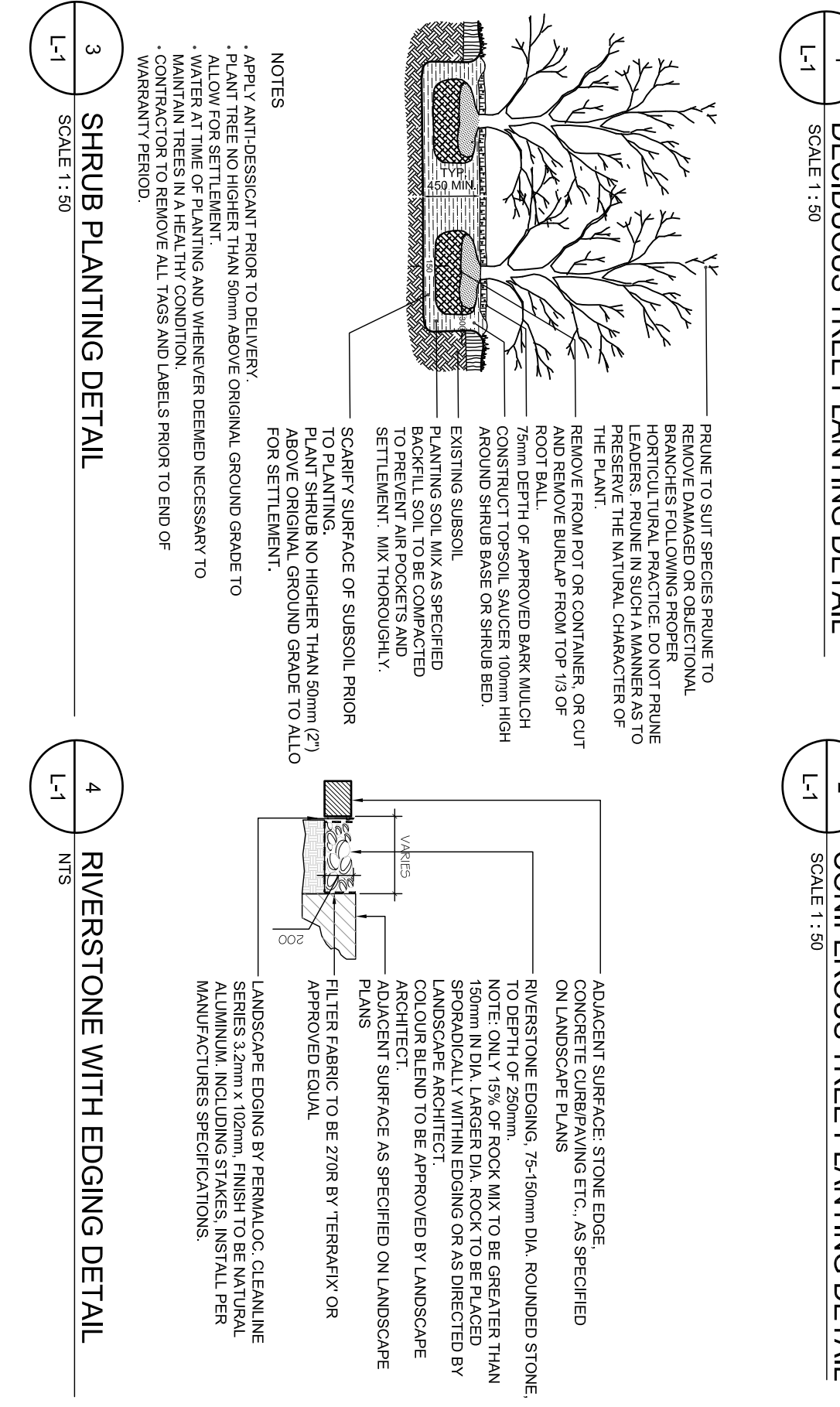
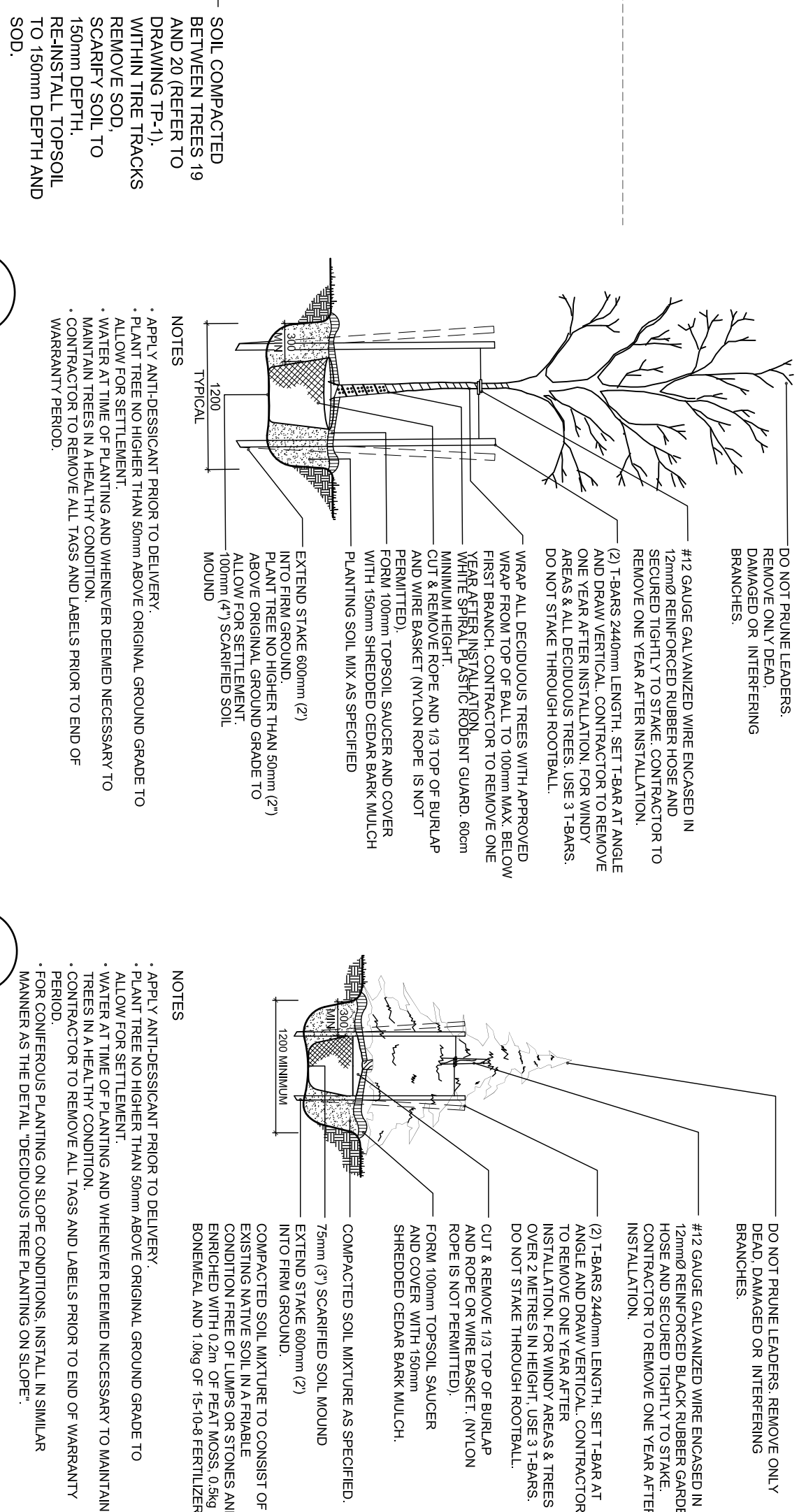
#### PLANT LIST FOR DRAWING

KEY QUANT.	BOTANICAL NAME	COMMON NAME	CAL.	HEIGHT	SPREAD	SPACE	COND.
At	Acer x freemanii	Freeman Maple	70	-	-	BB	BB
Ag	Acer glabrum	Amur Maple	50	-	-	BB	BB
Om	Quercus macrocarpa	Bur Oak	70	-	-	BB	BB
<b>CONIFEROUS TREES</b>							
Ac	Abies concolor	White Fir	-	2500	-	BB	BB
<b>SHRUBS</b>							
ebc	Euonymus alatus 'Compactus'	Winged Burning Bush	-	600	-	CG	CG
sx	Spiraea x 'Gold Mound'	Gold Mound Spiraea	-	800	-	CG	CG
ra	Ribes alpinum	Alpine Currant	-	600	-	CG	CG
<b>GRASSES</b>							
pa	Pennisetum alopecuroides 'Hamlet'	Dwarf Fountain Grass	-	600	-	POT	POT
ms	Miscanthus sinensis 'Adagio'	Adagio Maiden Grass	-	1500	-	POT	POT

#### COSTCO LANDSCAPE REQUIREMENTS

- SPECIMEN DECIDUOUS TREES: 34" (8-10CM) CAL. B&B OR 36-48" (90-120CM) BOX
- DECIDUOUS TREES IN PARKING LOT AND STREET TREES: 2" (5CM) CAL. B&B OR 24" (60CM) BOX.
- BRANCHES ABOVE 5' (1.5M)
- FLOWERING ACCENT TREES: 2" (5CM) CAL. OR 24" (60CM) BOX
- SPECIMEN CONIFEROUS TREES: 8"-10" (2-2.5M) FULL AND BUSHY TO BASE
- CONIFEROUS TREES: 8"-7" (1.5-2M) FULL AND BUSHY TO BASE
- LARGE SHRUBS: 24"-30" (60-75CM) MIN. 5 OR 7 GAL. (20-27L) OR B&B
- MEDIUM SHRUBS: 18" (45CM) MIN. 5 GAL. (20L) OR B&B
- SMALL SHRUBS: 15" (38CM) HEIGHT/SPREAD. CONTAINER OR B&B
- GROUNDCOVER: FULLY BUSHY 1 GAL. (40 LITRE) @ 30" (75CM) O.C. OR 4" (10CM) POTS @ 18" (45CM) O.C.

NOTE:  
 • CHECK ALL QUANTITIES  
 • REPORT ANY DISCREPANCIES TO THE LANDSCAPE ARCHITECT  
 • THE QUANTITIES INDICATED ON THE PLAN SUPERSEDE THE QUANTITIES OF THE PLANT LIST  
 • THE LAYOUT OF ALL PLANT MATERIAL IS TO BE APPROVED BY THE LANDSCAPE ARCHITECT PRIOR TO PLANTING.



NO.	REVISIONS	BY	DATE	APPR.
1	ISSUED FOR SITE PLAN APPLICATION	MR	14/FEB/2012	LSN

ALL PREVIOUS ISSUES OF THIS DRAWING ARE SUPERSEDED

CLIENT: COSTCO WHOLESALE  
 CITY OF OTTAWA  
 PROJECT TITLE: COSTCO KANATA PROPOSED GAS BAR  
 SHEET TITLE: LANDSCAPE PLAN



PROJECT NUMBER: 14.10213.001.LA1  
 SCALE: 1 : 250  
 DATE: NOVEMBER 2011  
 DWG. NUMBER: L-1