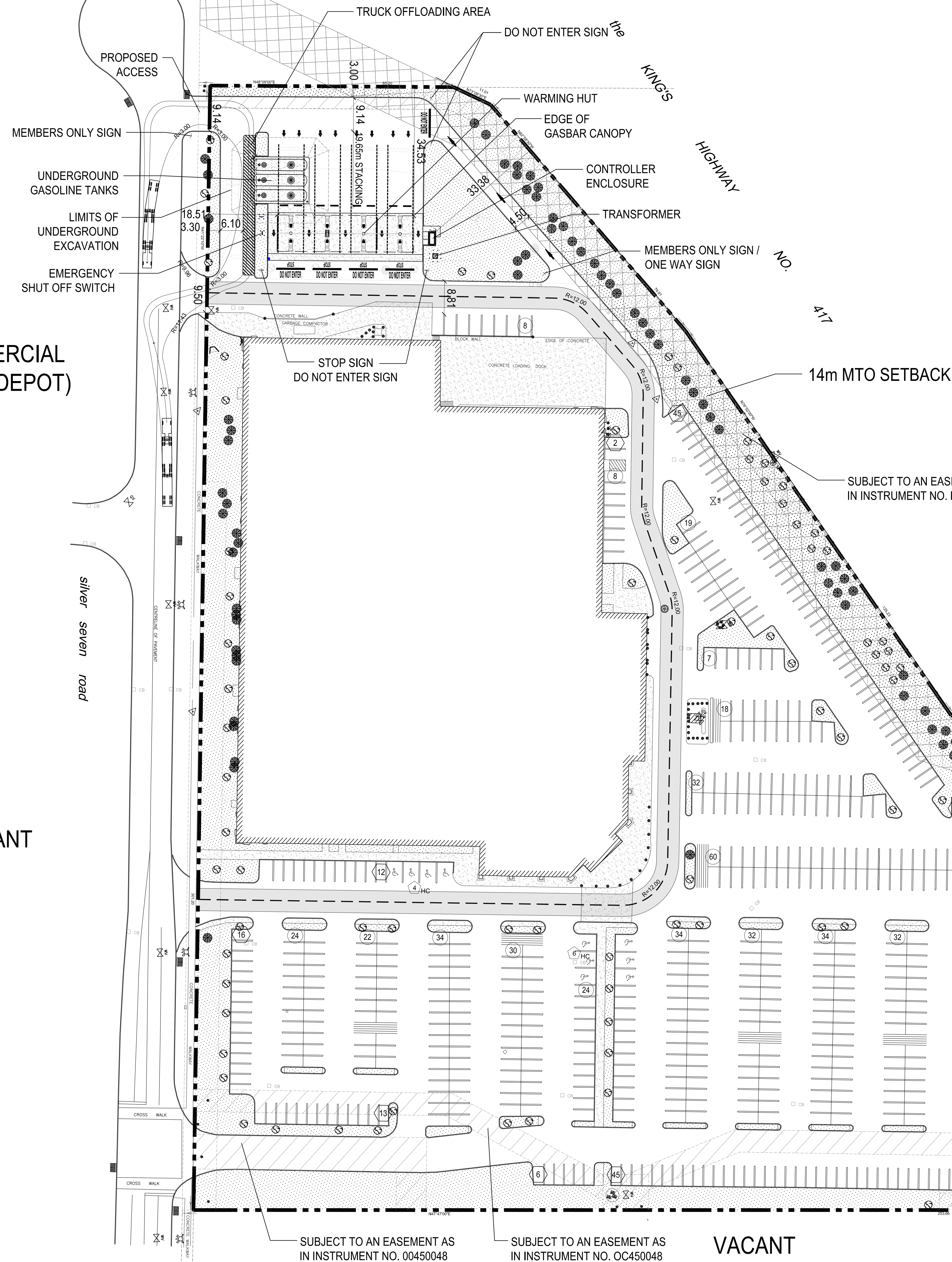




COMMERCIAL
(HOME DEPOT)

VACANT

VACANT

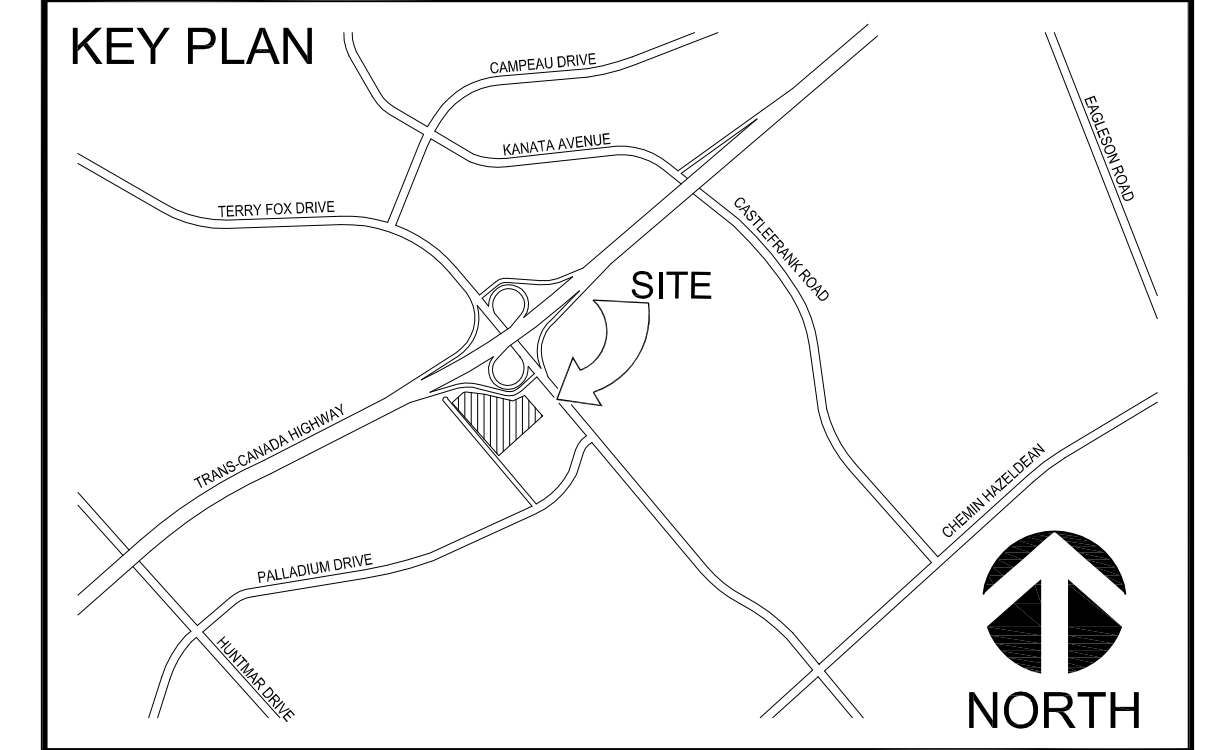


LEGEND

- STOP SIGN (PER INSET 1)
DO NOT ENTER SIGN (PER INSET 2)
- MEMBERS ONLY (PER INSET 3)
- INSET 1: STOP SIGN
- INSET 2: DO NOT ENTER
- INSET 3: MEMBERS ONLY
- LIGHT STANDARD
- CONCRETE PAVING
- SOD
- ASPHALT PAVING
- FIRE ROUTE
- EXISTING EASEMENT
- 14m MTO SETBACK
- EXISTING LANDSCAPING
- FIRE HYDRANT

COSTCO WHOLESALE
KANATA, ONTARIO
NEW GASBAR

COSTCO WHOLESALE CORPORATION
999 LAKE DRIVE
ISSAQUAH, WA 98027
T: 425.313.8100
Costco.com



PROJECT DATA

PROJECT ADDRESS:	HIGHWAY 417 & TERRY FOX DRIVE KANATA, ONTARIO
COSTCO SITE AREA:	56,633.4m ² (5.66ha) / 609,597ft ² (13.99ac)
ZONING:	IL6 [305]
JURISDICTION:	CITY OF OTTAWA
BOUNDARY INFORMATION:	THIS DRAWING IS BASED ON AN E-FILE FROM MMM GEOMATICS ONTARIO LIMITED, O.L.S., DATED SEPTEMBER 13, 2011.

EXISTING BUILDING DATA	AREA
BUILDING AREA (INCLUDES VESTIBULE AREA)	12,750.5m ² 137,245ft ²
TIRE CENTRE	483.1m ² 5,200ft ²
TOTAL BUILDING GROSS FLOOR AREA	13,233.6m ² 142,445ft ²
PROPOSED BUILDING DATA	AREA
BUILDING AREA (INCLUDES VESTIBULE AREA)	12,750.5m ² 137,245ft ²
TIRE CENTRE	483.1m ² 5,200ft ²
TOTAL BUILDING GROSS FLOOR AREA	13,233.6m ² 142,445ft ²
CONTROLLER ENCLOSURE	7.0m ² 75ft ²
WARMING HUT	1.4m ² 15ft ²
EXISTING SITE DATA	AREA
LOT COVERAGE	23.4% (13,233.6m ²)
LANDSCAPED OPEN SPACE	27.6% (15,629.5m ²)
PAVED PARKING AREA	49.0% (27,770.3m ²)
PROPOSED SITE DATA	AREA
LOT COVERAGE	23.4% (13,242.0m ²)
LANDSCAPED OPEN SPACE	22.5% (12,734.8m ²)
PAVED PARKING AREA	54.1% (30,656.6m ²)
EXISTING PARKING DATA	PARKING SPACES
TOTAL PARKING REQUIRED	450
NUMBER OF PARKING SPACES PROVIDED (3.0m WIDE)	469
NUMBER OF PARKING SPACES PROVIDED (2.74m WIDE)	184
NUMBER OF ACCESSIBLE PARKING SPACES PROVIDED	10
TOTAL COSTCO PARKING SPACES PROVIDED	663
NO. OF STALLS PROVIDED PER 100 S.M. OF COSTCO BUILDING AREA	5.01
PROPOSED PARKING DATA	PARKING SPACES
TOTAL PARKING REQUIRED	451
PROPOSED NUMBER OF PARKING SPACES (3.0m WIDE)	469
PROPOSED NUMBER OF PARKING SPACES (2.74m WIDE)	184
PROPOSED NUMBER OF ACCESSIBLE PARKING SPACES	10
TOTAL COSTCO PARKING SPACES PROPOSED	663
NO. OF STALLS PROVIDED PER 100 S.M. OF COSTCO BUILDING AREA	5.01

NO.	REVISIONS	BY	DATE	APPR.
1	SUBMITTED FOR SITE PLAN APPLICATION	CJM	FEB. 14/12	DSB

ISSUED FOR APPROVAL, NOT FOR CONSTRUCTION
ALL PREVIOUS ISSUES OF THIS DRAWING ARE SUPERSEDED

SHEET TITLE
SITE PLAN

CONSULTANT
MMM GROUP
100 Commerce Valley Drive W
Thornhill, ON, L3T 0A1
Tel 905.862.1100
Fax 905.862.7276
www.mmm.ca

DESIGNED CJM/DSB	DRAWN CJM	CHECKED SODG
SCALE 1 : 500	DATE JANUARY 13, 2012	
PROJECT NUMBER 14.10213.001.P01	DWG. NUMBER SP-29	

FILENAME: I:\Vista\Costco\Gasbar\14.10213.001.P01 - Gasbar - Kanata\diag\2012_CCA_Vanada_SP-29.dwg
 PLOTTED: Feb 13, 2012 - 3:04pm