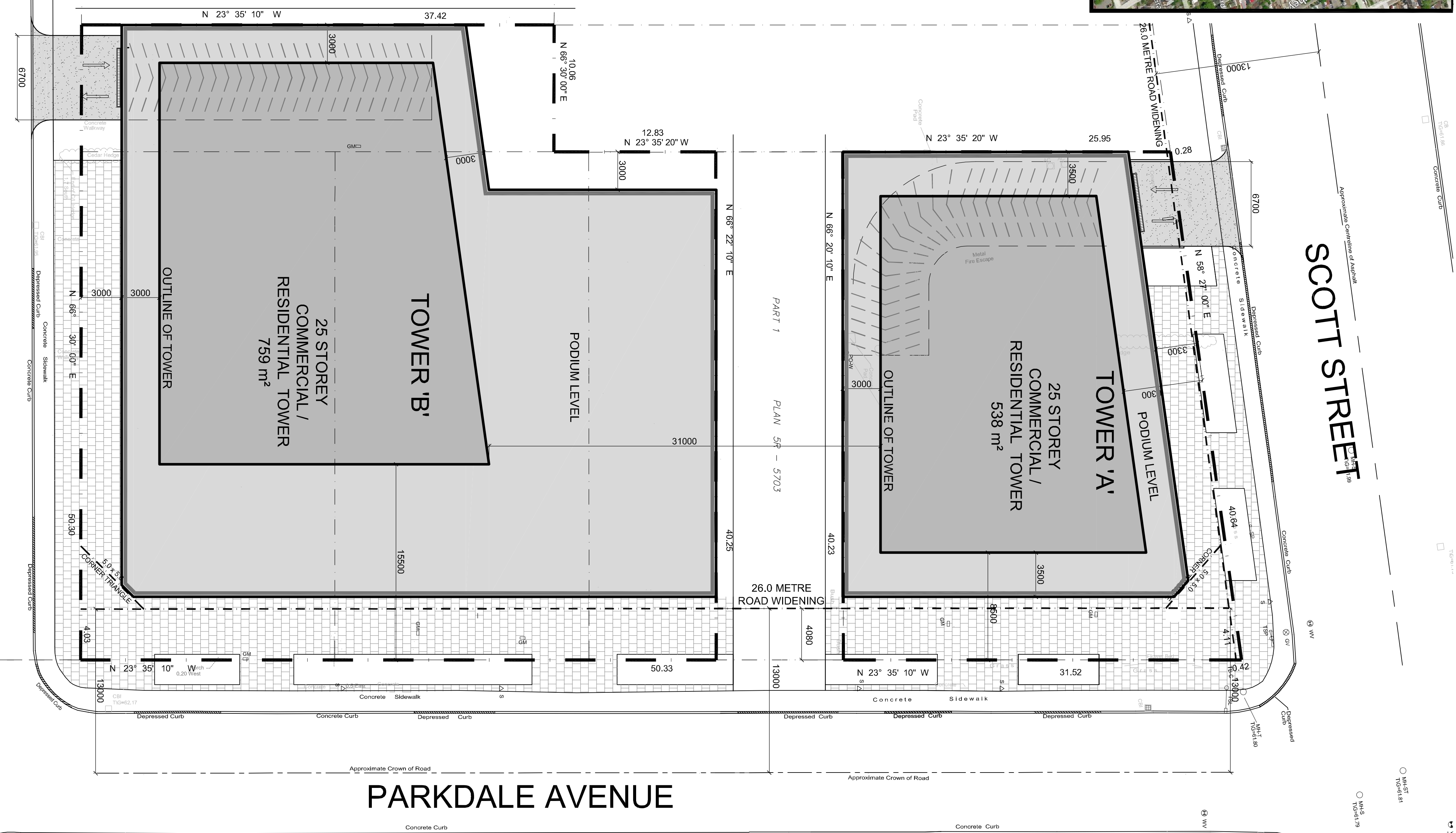
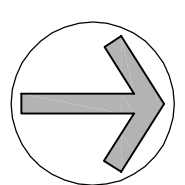
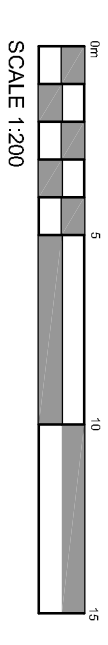




**KEY PLAN**



**SITE PLAN**



SCALE 1:200

**BULLMAN STREET**

MC12 F(1.5) H(19)

**PARKDALE AVENUE**

**BULLMAN STREET**

R4S

R4S

R4S

GM1 F(1.0) H(13.5)

**TOWER 'A'**  
**250 PARKDALE AVENUE**

**PROJECT INFORMATION**

ZONING	Zoning By-Law 2008-250	MC12 F(2.0) H(19)
SITE AREA	1,156.57 sq. m. (12,449 sq. ft.)	
<b>GROSS BUILDING - AREAS</b> (CITY OF OTTAWA'S DEFINITION)		
GROUND FLOOR	706.4 sq. m. (7,604) sq. ft.	
2nd FLOOR	706.4 sq. m. (7,604) sq. ft.	
TYPICAL FLOOR	23 x 490.58 sq. m. 23 x (4,635) sq. ft.	9,902.9 sq. m. (106,594) sq. ft.
TOTAL AREA (ABOVE GRADE)		11,315.7 sq. m. (121,802) sq. ft.

**TOWER 'B'**  
**274 PARKDALE AVENUE**

**PROJECT INFORMATION**

ZONING	Zoning By-Law 2008-250	MC12 F(2.0) H(19)
SITE AREA	2,400.0 sq. m. (25,833 sq. ft.)	
<b>GROSS BUILDING - AREAS</b> (CITY OF OTTAWA'S DEFINITION)		
GROUND FLOOR	1,508.6 sq. m. (16,239) sq. ft.	
2nd FLOOR	1,508.6 sq. m. (16,239) sq. ft.	
TYPICAL FLOOR	23 x 607.4 sq. m. 23 x (6,589) sq. ft.	13,970.7 sq. m. (150,378) sq. ft.
TOTAL AREA (ABOVE GRADE)		18,987.7 sq. m. (192,854) sq. ft.