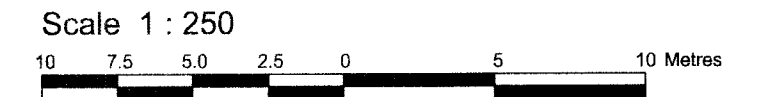


CARLETON CONDOMINIUM PLAN No. 396
CITY OF OTTAWA
 Surveyed by Annis, O'Sullivan, Vollebakk Ltd.



Metric
 DISTANCES SHOWN ON THIS PLAN ARE IN METRES AND CAN BE CONVERTED TO FEET BY DIVIDING BY 0.3048

Surveyor's Certificate

- I CERTIFY THAT:
1. This survey and plan are correct and in accordance with the Surveys Act, the Surveyors Act and the Land Titles Act and the regulations made under them.
 2. The survey was completed on the 6th day of November, 2017.

November 7, 2017
 Date

A.J. Broxham
 Andrew J. Broxham
 Ontario Land Surveyor

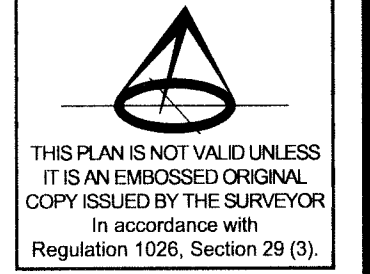
PART 2
 THIS PLAN MUST BE READ IN CONJUNCTION WITH SURVEY REPORT DATED: November 7, 2017

ANNIS, O'SULLIVAN, VOLLEBEKK LTD. grants to _____ Domicile _____ ("The Client"), their solicitors, mortgagees, and other related parties, permission to use original, signed, sealed copies of the Surveyor's Real Property Report in transactions involving The Client.

Notes & Legend

- Denotes Survey Monument Planted
- Survey Monument Found
- SIB Standard Iron Bar
- SSIB Short Standard Iron Bar
- IB Iron Bar
- (WIT) Witness
- (AOG) Annis, O'Sullivan, Vollebakk Ltd.
- Meas. Measured
- (P) Registered Plan 43586
- (P1) Plan 4R-5803
- (P2) Plan 4R-1187
- (P3) Carleton Condominium Plan No. 396
- (P4) (AOG) Plan August 25, 1988
- OHW Overhead Wires
- UP Utility Pole
- AN Anchor
- LS Light Standard
- B Bollard
- △ S Sign
- CLF Chain Link Fence
- CRW Concrete Retaining Wall
- PO-M Metal Pole
- C/L Centerline

ASSOCIATION OF ONTARIO
 LAND SURVEYORS
 PLAN SUBMISSION FORM
 2029633

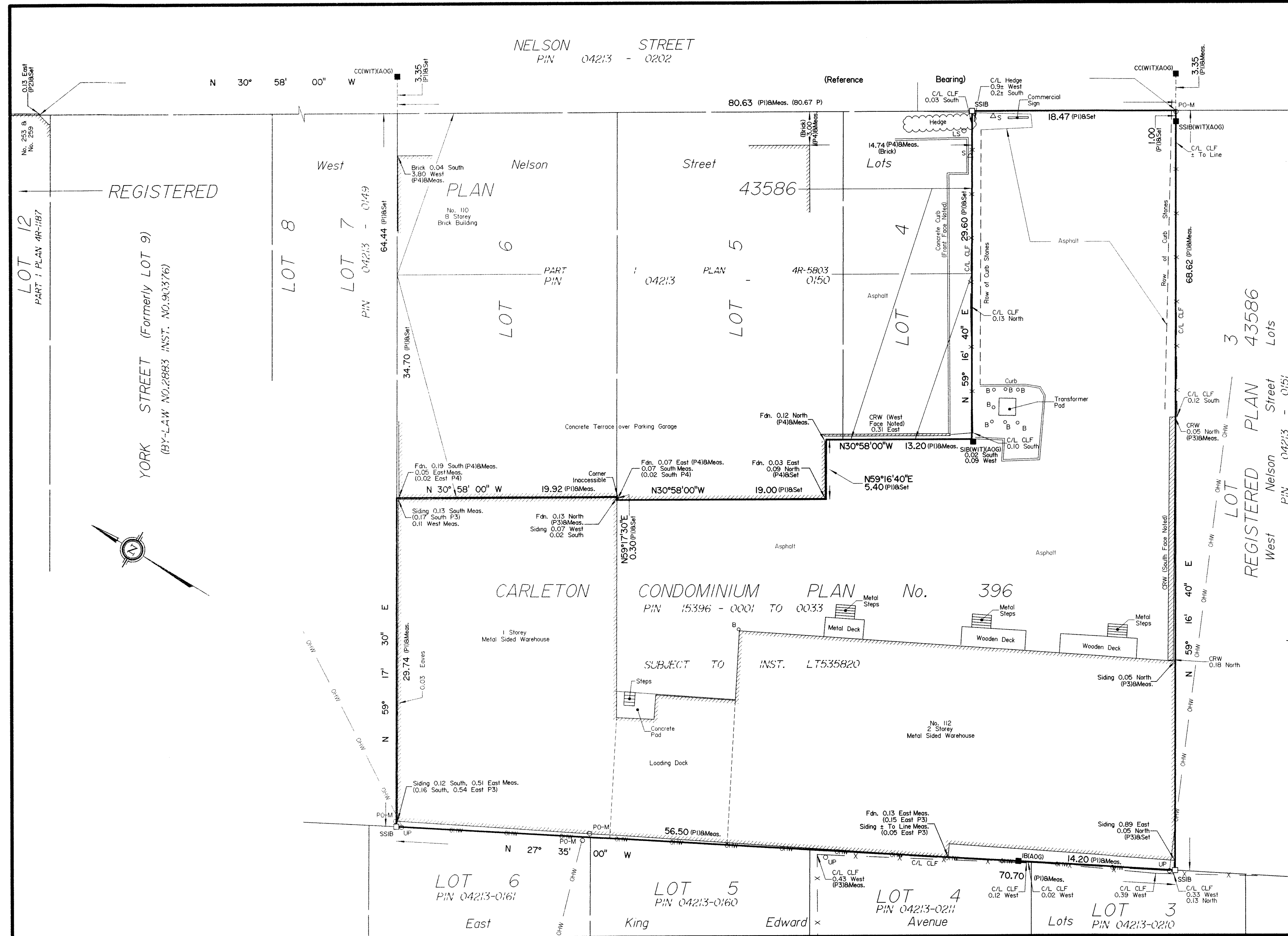


THIS PLAN IS NOT VALID UNLESS IT IS AN EMBOSSED ORIGINAL COPY ISSUED BY THE SURVEYOR In accordance with Regulation 1026, Section 29 (3).

Bearings are astronomic, derived from the Westerly Limit of Nelson Street, shown to be N30°58'00"W on Plan 4R-5803.

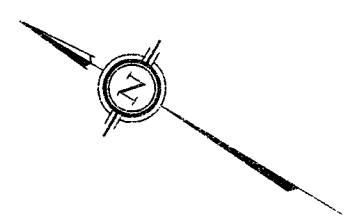
© Annis, O'Sullivan, Vollebakk Ltd., 2017. "THIS PLAN IS PROTECTED BY COPYRIGHT"

ANNIS, O'SULLIVAN, VOLLEBEKK LTD.
 14 Concourse Gate, Suite 500
 Nepean, Ont. K2E 7S6
 Phone: (613) 727-0850 / Fax: (613) 727-1079
 Email: Nepean@aovltd.com



REGISTERED

YORK STREET (Formerly LOT 9)
 (BY-LAW NO.2883 INST. NO.90376)



LOT 12
 PART 1 PLAN 4R-1187

LOT 8

LOT 7
 PIN 04213-0149

PLAN

LOT 6

PIN 04213

LOT 5

PLAN 43586

LOT 4

LOT 3
 PLAN 43586

REGISTERED
 West Nelson Street
 PIN 04213-0151

CARLETON CONDOMINIUM PLAN No. 396
 PIN 15396 - 0001 TO 0033

SUBJECT TO INST. LT535820

LOT 6
 PIN 04213-0161

LOT 5
 PIN 04213-0160

LOT 4
 PIN 04213-0211

LOT 3
 PIN 04213-0210

N 27° 35' 00" W

N 59° 16' 40" E

N 30° 58' 00" W

N 30° 58' 00" W

Reference Bearing

80.63 (P1)&Meas. (80.67 P)

14.74 (P4)&Meas. (Brick)

18.47 (P1)&Set

1.00 (P1)&Set

68.62 (P1)&Meas.

34.70 (P1)&Set

64.44 (P1)&Set

3.35 (P1)&Set

0.13 East (P2)&Set

0.13 East (P2)&Set

0.13 East (P2)&Set

0.13 East (P2)&Set

0.13 East (P2)&Set

0.13 East (P2)&Set

0.13 East (P2)&Set

0.13 East (P2)&Set

0.13 East (P2)&Set

0.13 East (P2)&Set

0.13 East (P2)&Set

0.13 East (P2)&Set

0.13 East (P2)&Set

0.13 East (P2)&Set

0.13 East (P2)&Set

0.13 East (P2)&Set

0.13 East (P2)&Set

0.13 East (P2)&Set

0.13 East (P2)&Set

0.13 East (P2)&Set

0.13 East (P2)&Set

0.13 East (P2)&Set

0.13 East (P2)&Set

0.13 East (P2)&Set

0.13 East (P2)&Set

0.13 East (P2)&Set

0.13 East (P2)&Set

0.13 East (P2)&Set

0.13 East (P2)&Set

0.13 East (P2)&Set

0.13 East (P2)&Set

0.13 East (P2)&Set

0.13 East (P2)&Set

0.13 East (P2)&Set

0.13 East (P2)&Set