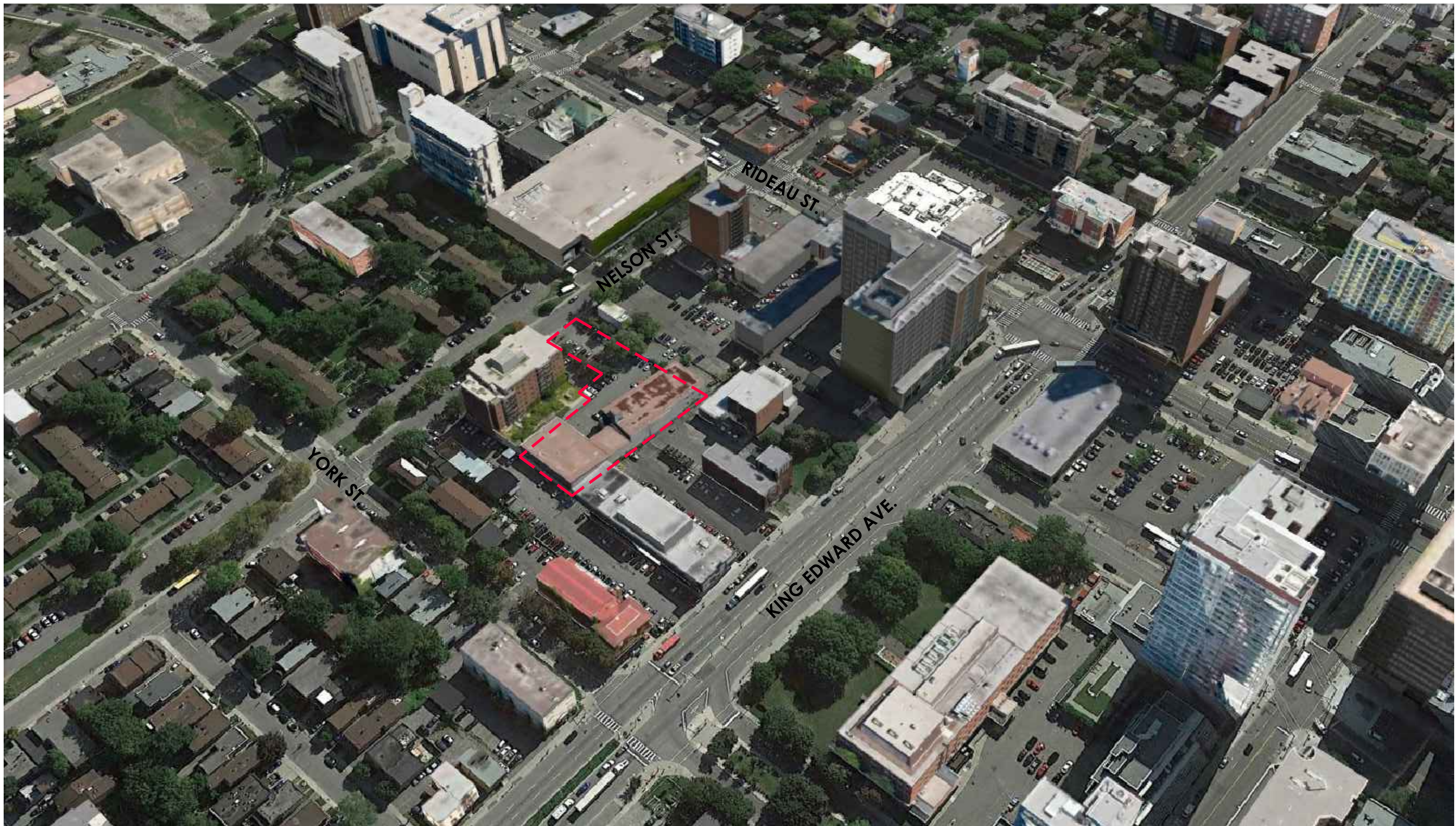


NEIGHBOURHOOD SITE PLAN



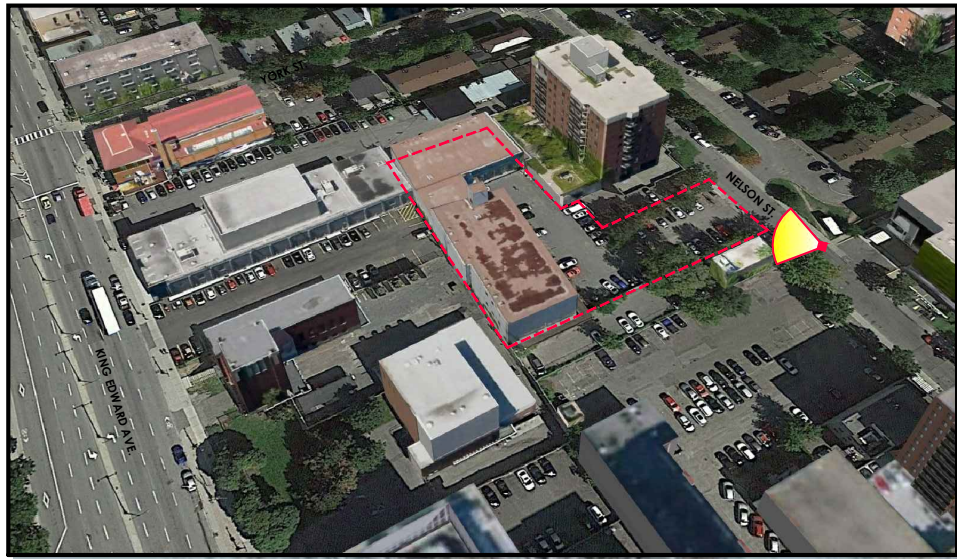
WALKABILITY STUDY



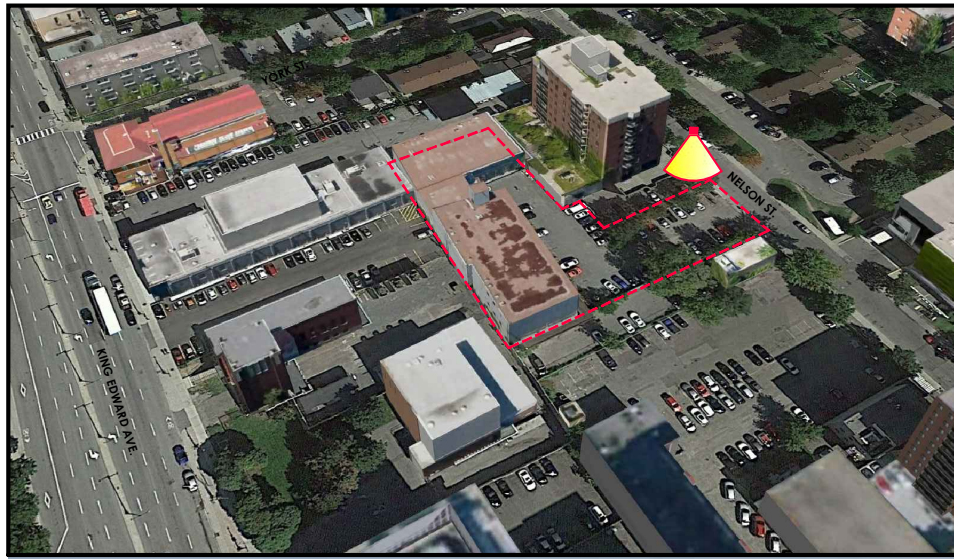
AERIAL VIEW OF SITE LOOKING EAST



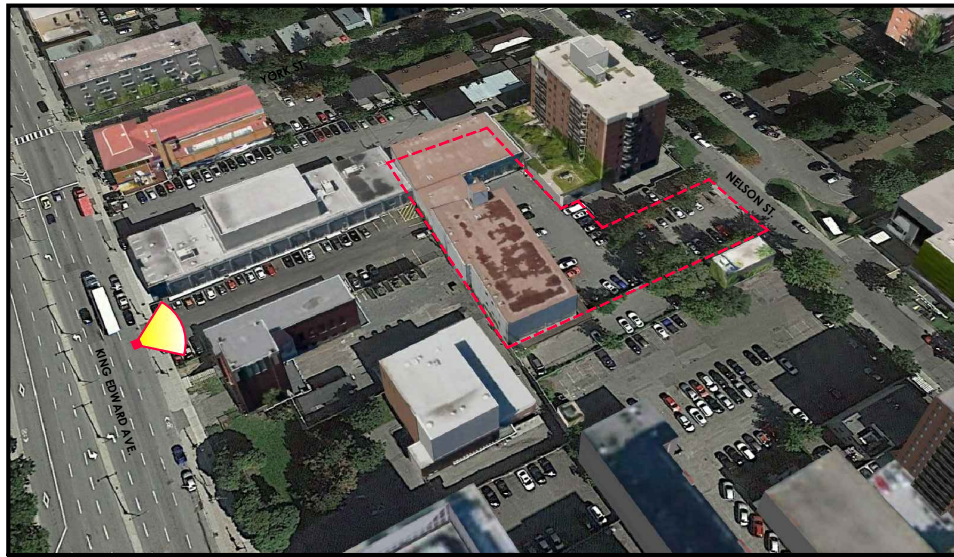
AERIAL VIEW OF SITE LOOKING NORTH



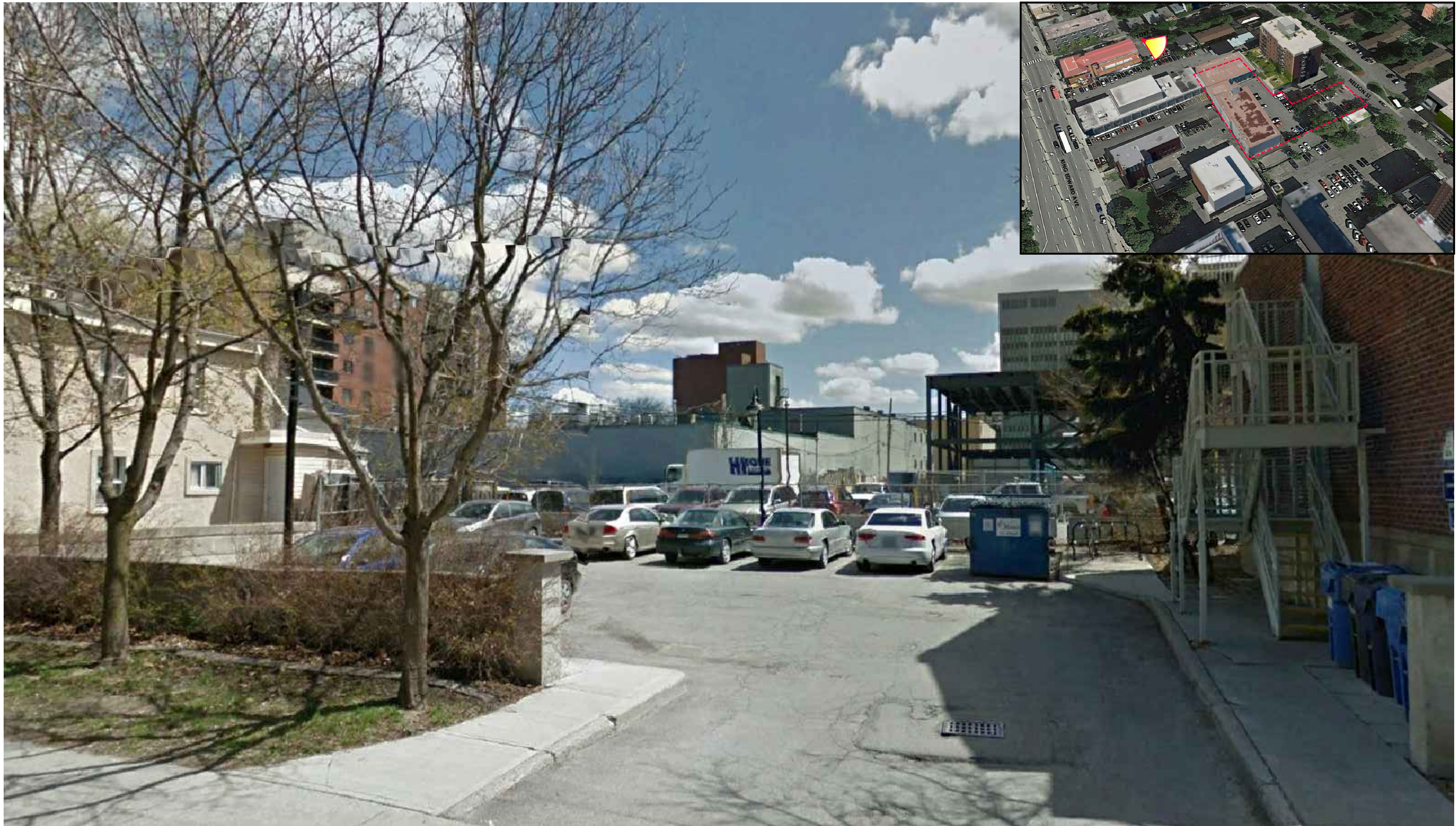
VIEW OF SITE LOOKING NORTH-WEST ALONG NELSON STREET



VIEW OF SITE LOOKING SOUTH-WEST ALONG NELSON STREET

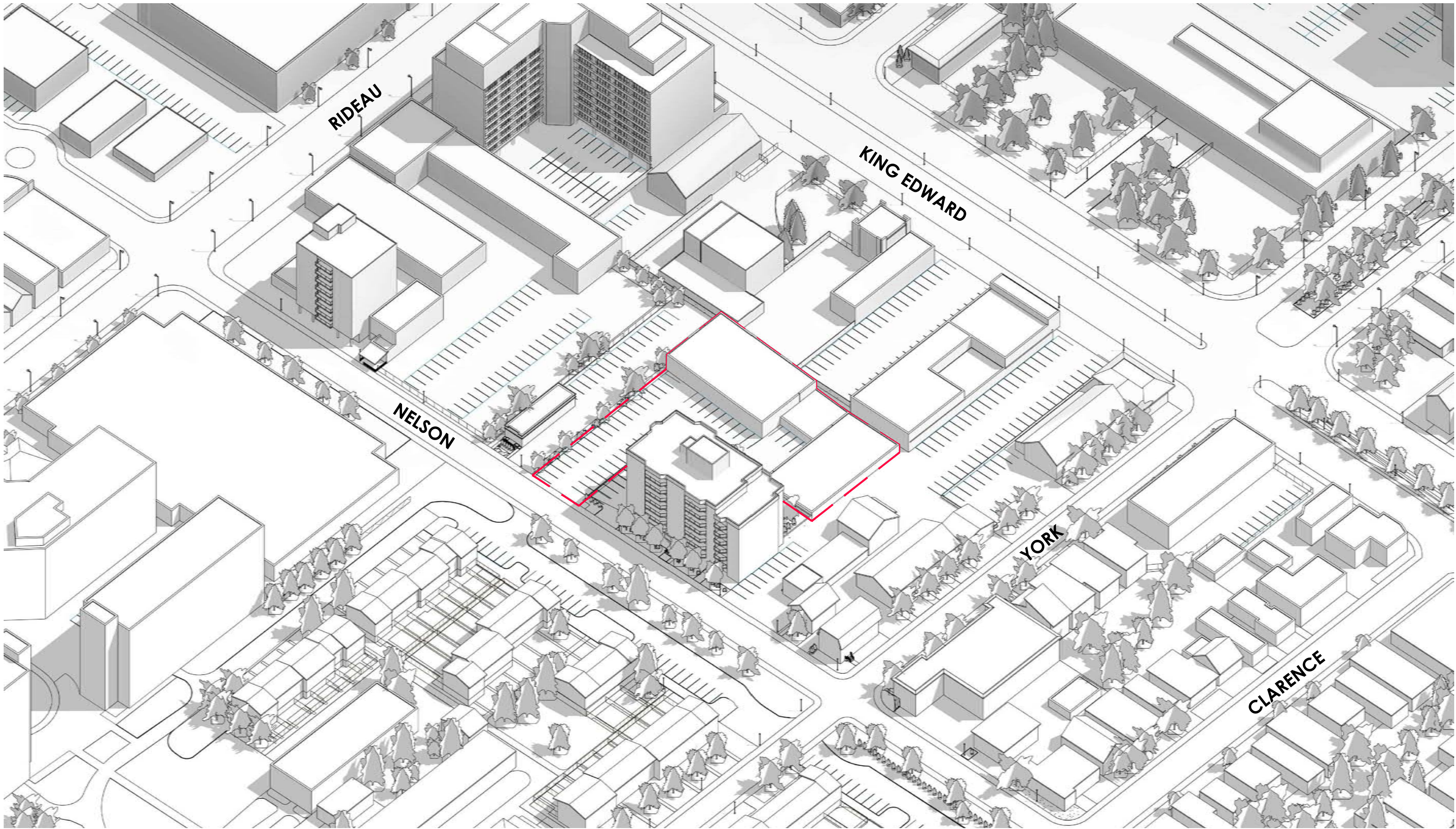


VIEW OF REAR OF SITE LOOKING EAST FROM KING EDWARD AVENUE

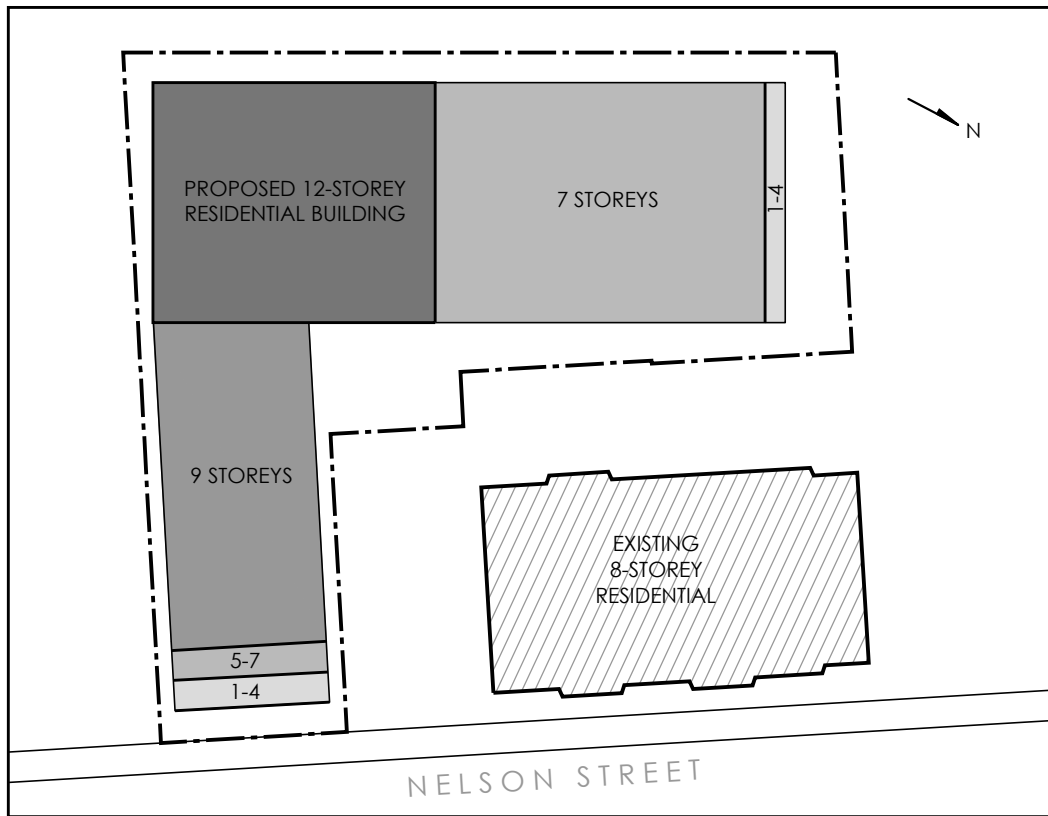


VIEW OF REAR OF SITE LOOKING SOUTH FROM YORK STREET

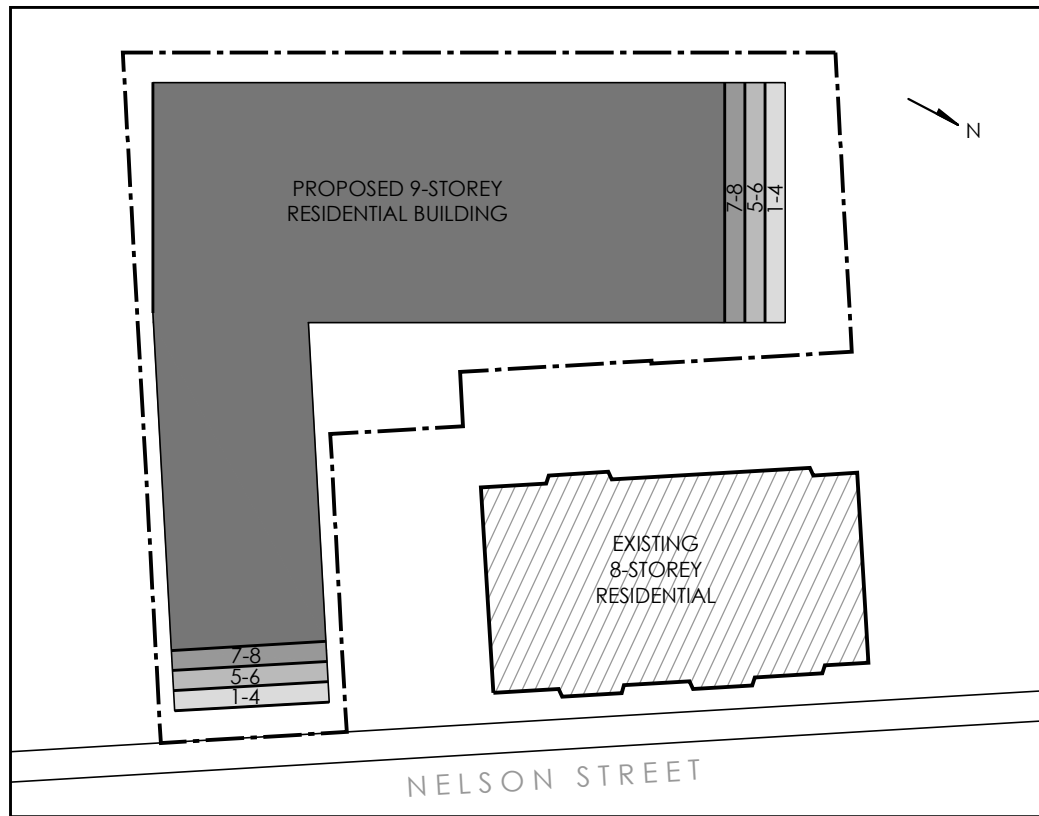




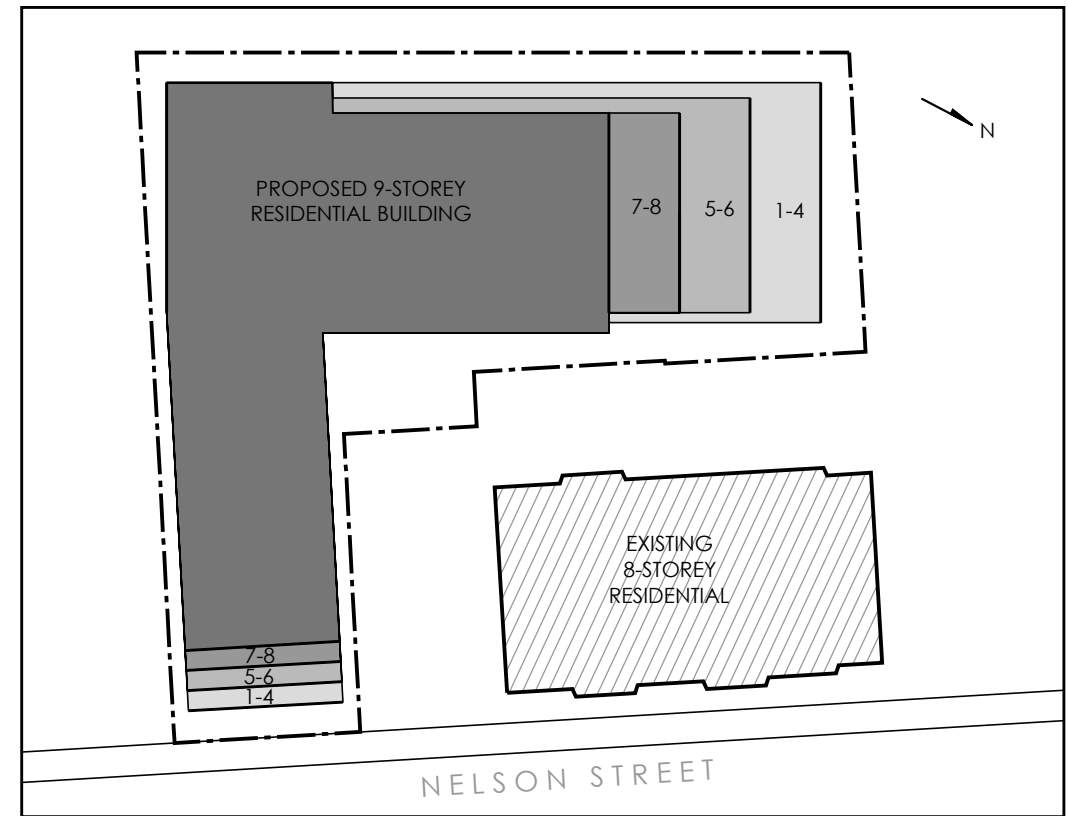
AERIAL VIEW OF SITE LOOKING SOUTH



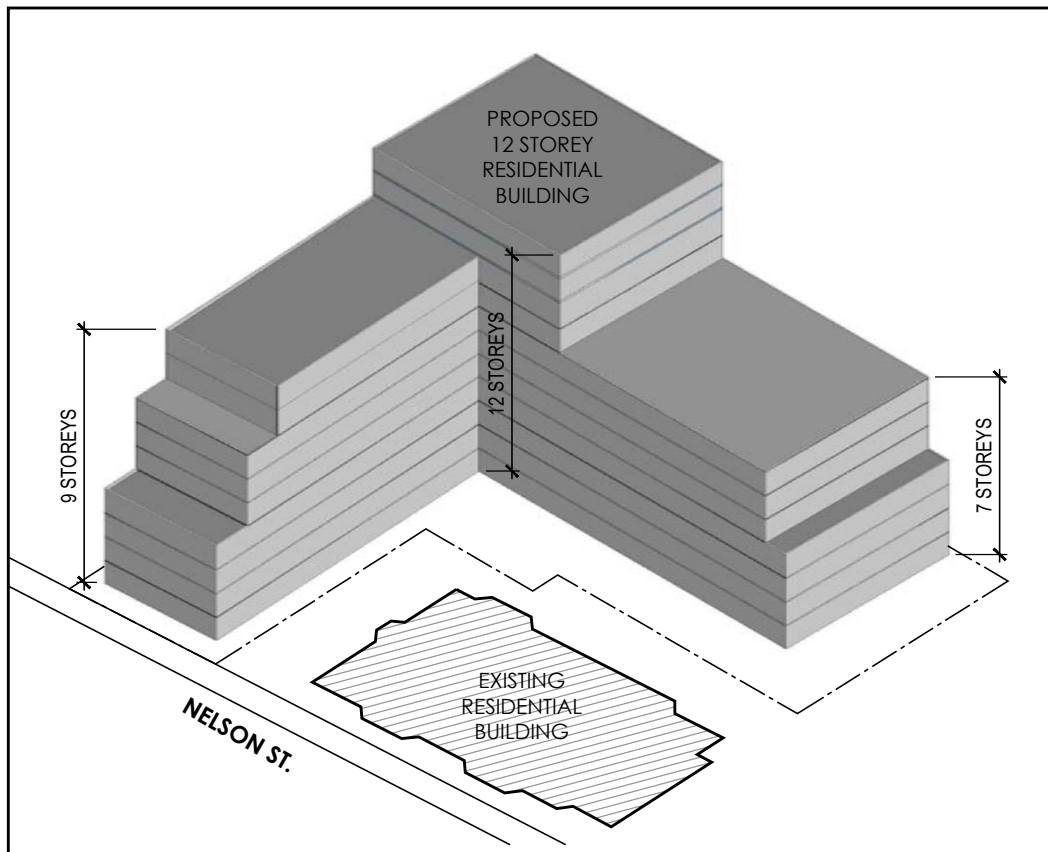
OPTION #1 - 7, 9, AND 12 STOREY SITE PLAN



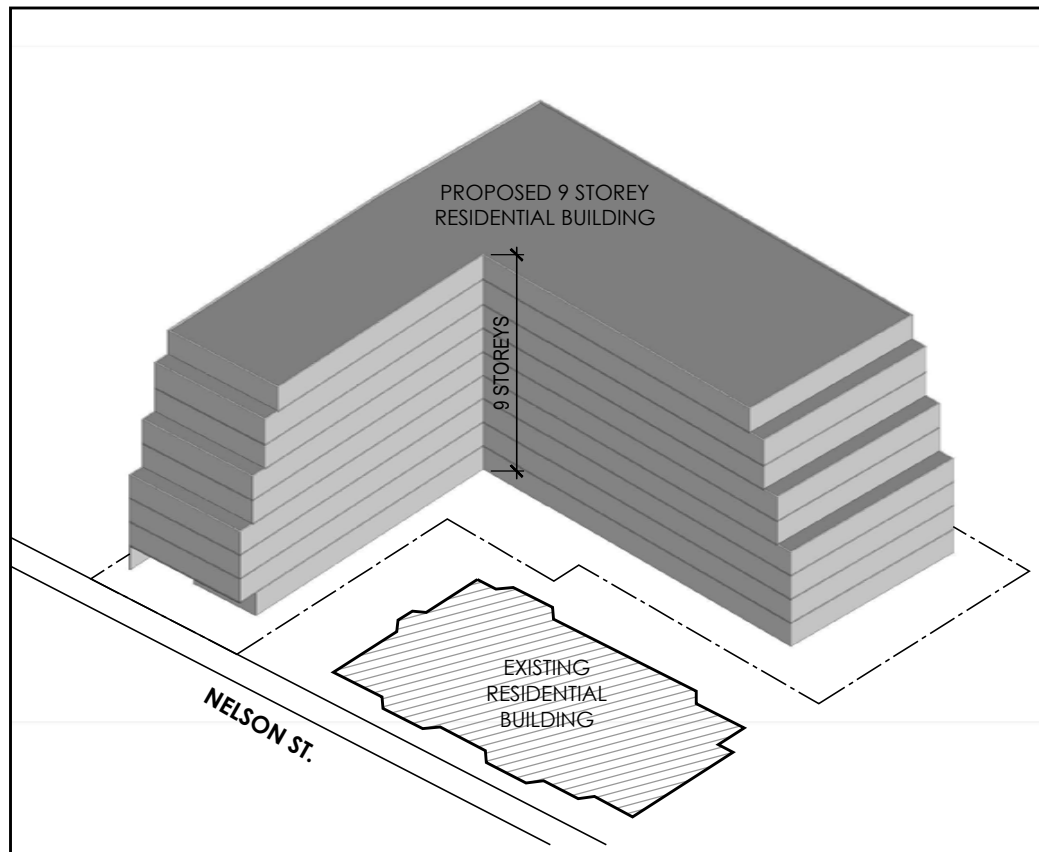
OPTION #2 - 9 STOREY MASSING WITH MINOR TERRACING SITE PLAN



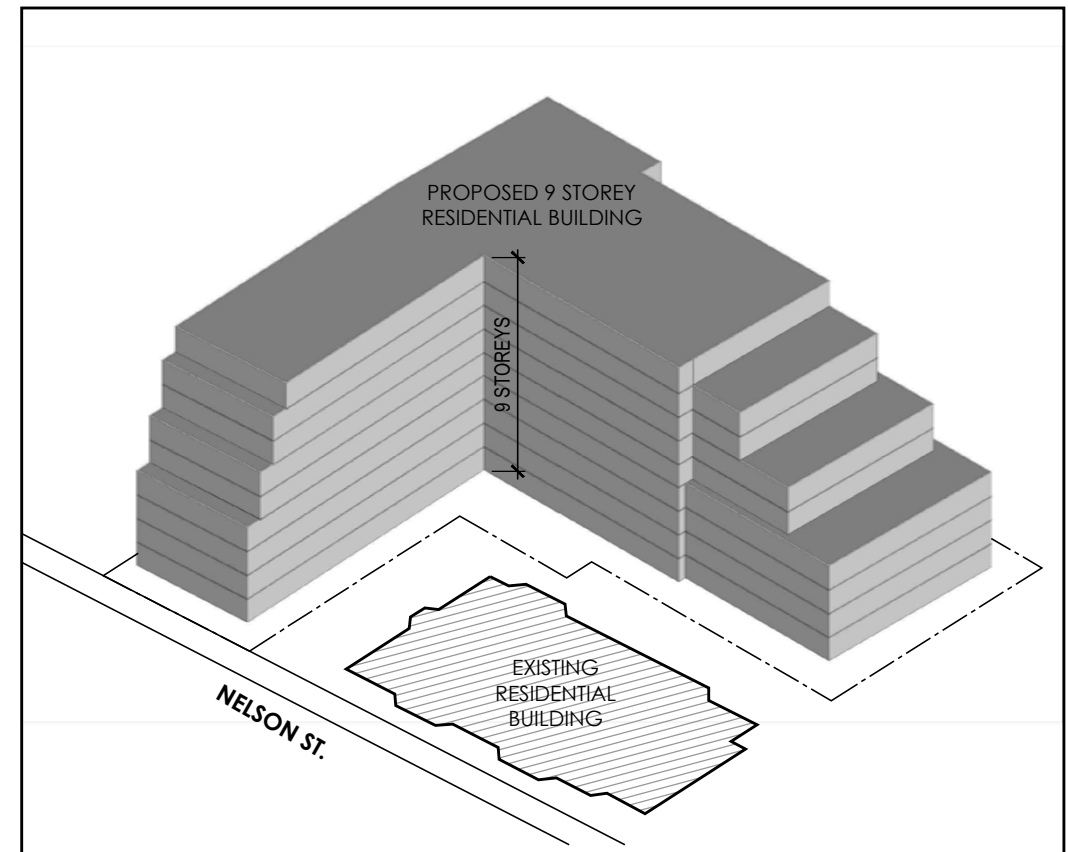
OPTION #3 - 9 STOREY WITH 45° DEGREE SETBACK ALONG NORTH PROPERTY SITE PLAN (PREFERRED OPTION)



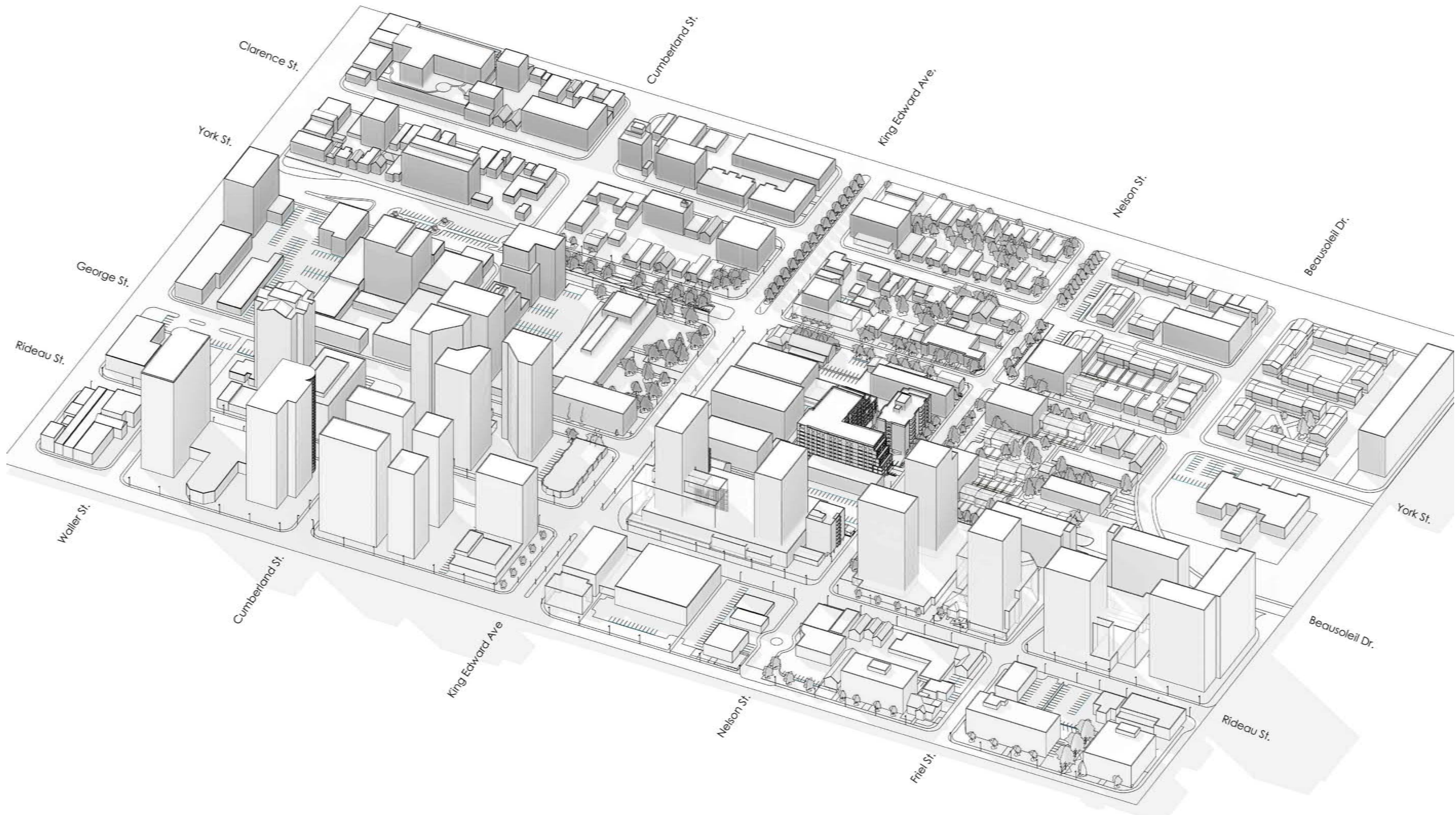
OPTION #1 - 7, 9, AND 12 STOREY MASSING



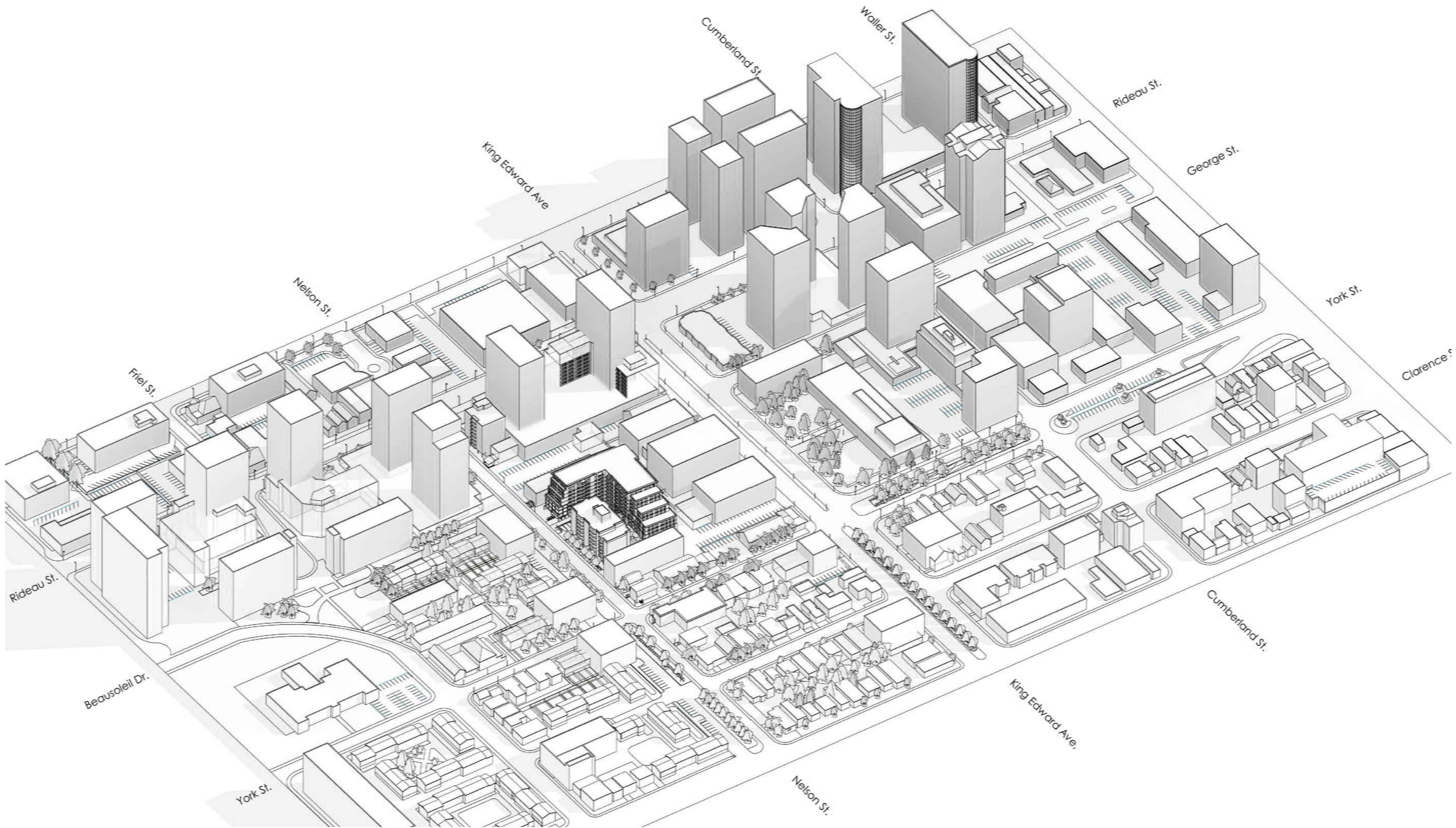
OPTION #2 - 9 STOREY MASSING WITH MINOR TERRACING



OPTION #3 - 9 STOREY WITH 45° DEGREE SETBACK ALONG NORTH PROPERTY (PREFERRED OPTION)



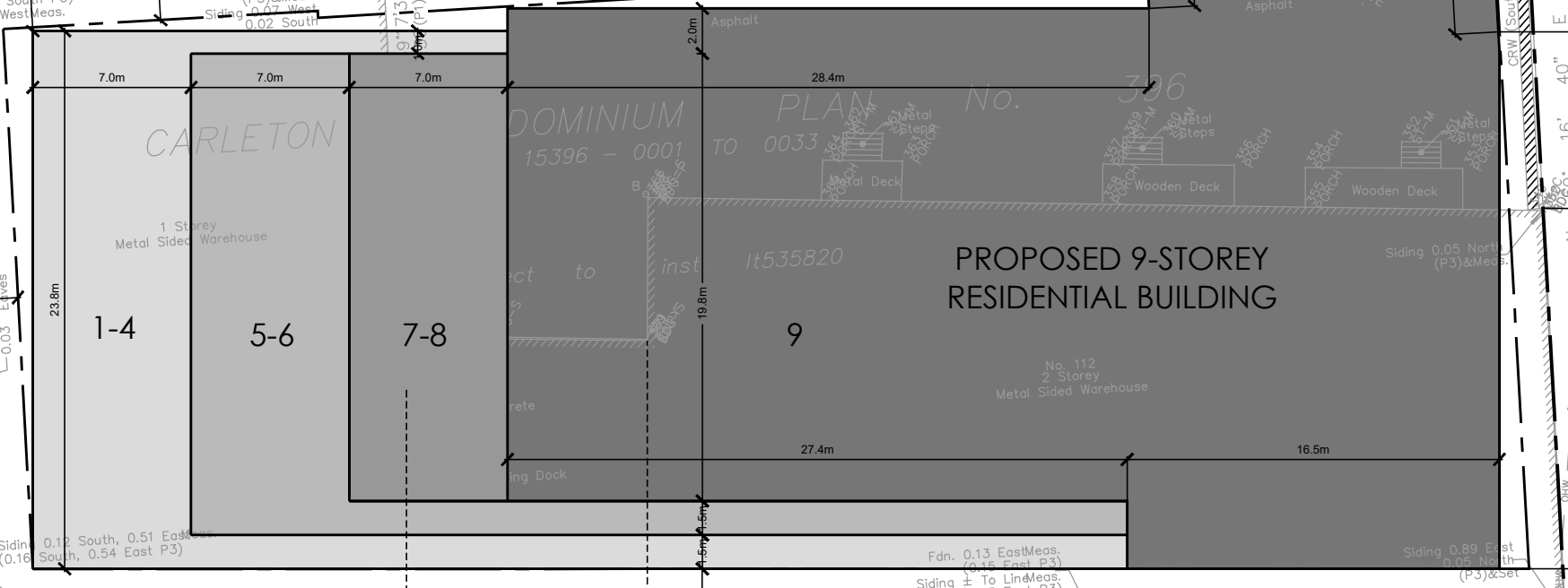
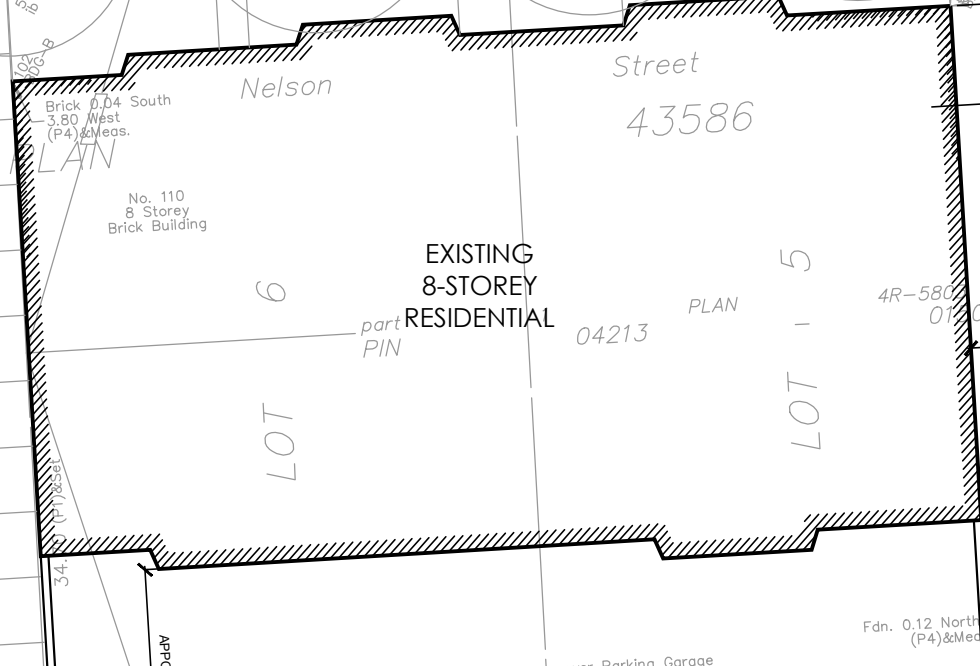
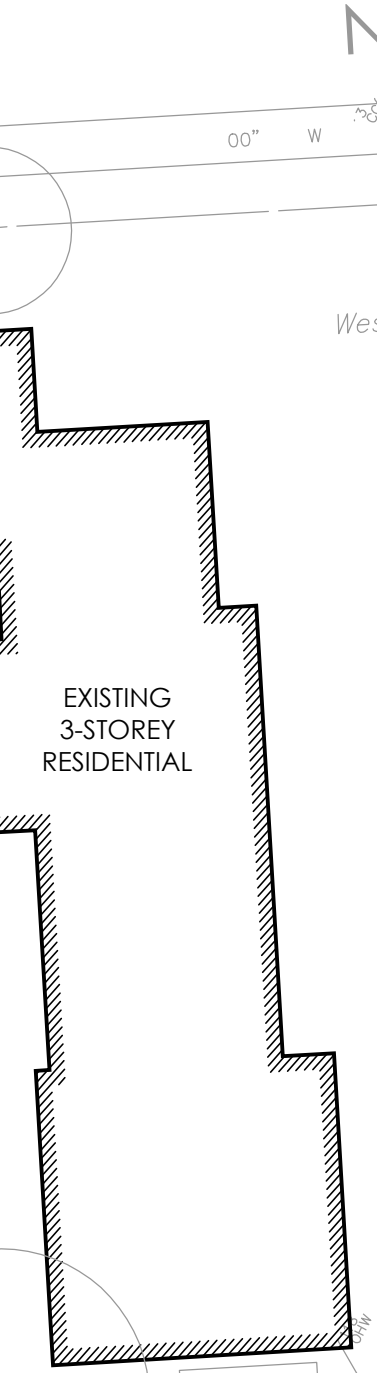
AERIAL VIEW OF SITE LOOKING NORTH WEST



AERIAL VIEW OF SITE LOOKING SOUTH

NELSON STREET

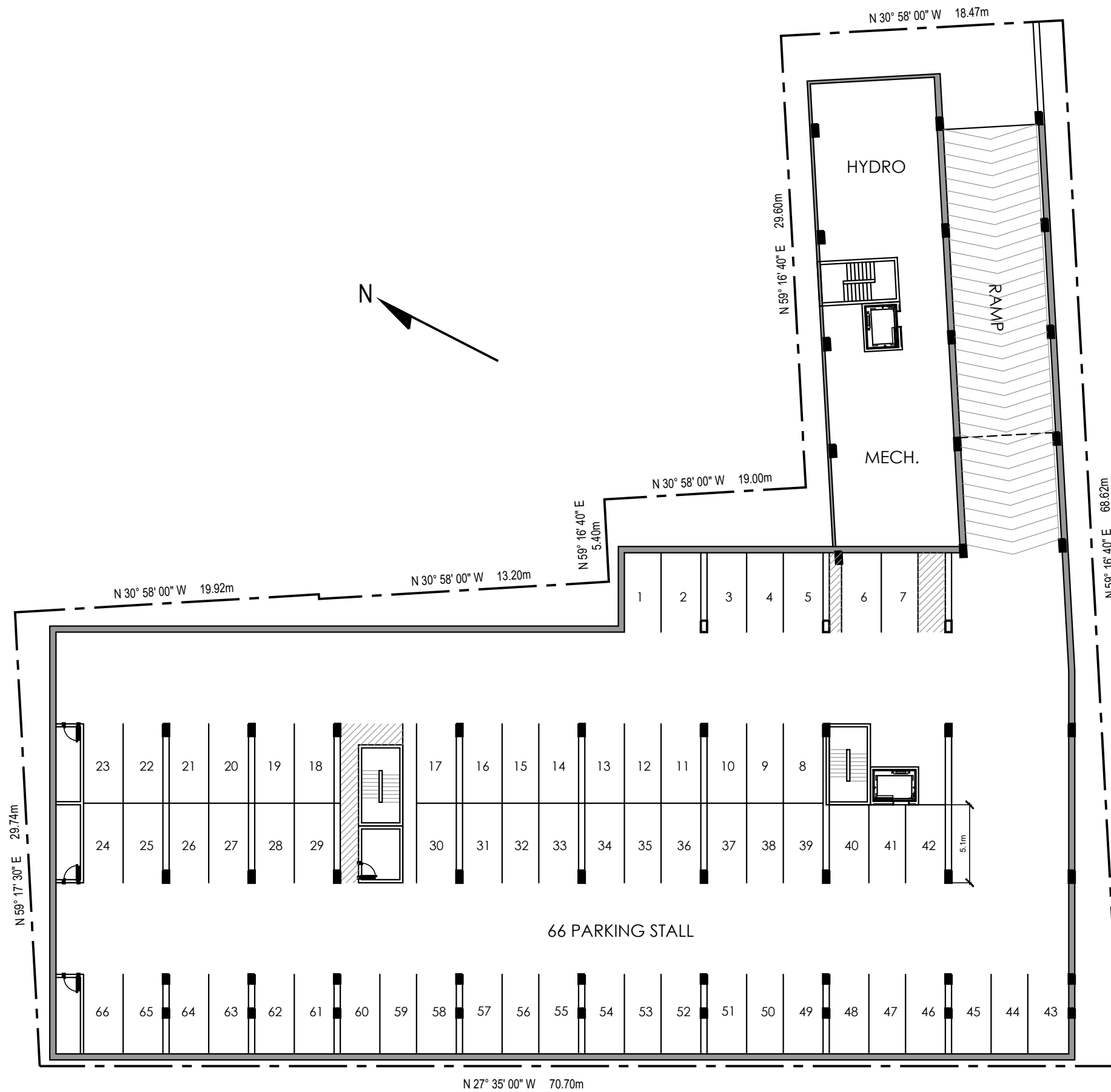
West Nelson Street  
 PIN 04213 - 0202  
 43586  
 PLAN 04213



**URBAN DESIGN REVIEW PANEL SUBMISSION**  
 - 112 NELSON STREET -  
**SITE PLAN**

NELSON STREET







JUNE 21 - 9am



JUNE 21 - 1pm



JUNE 21 - 4pm



SEPTEMBER / MARCH 21 - 9am



SEPTEMBER / MARCH 21 - 1pm



SEPTEMBER / MARCH 21 - 4pm



DECEMBER 21 - 9am



DECEMBER 21 - 1pm



DECEMBER 21 - 4pm

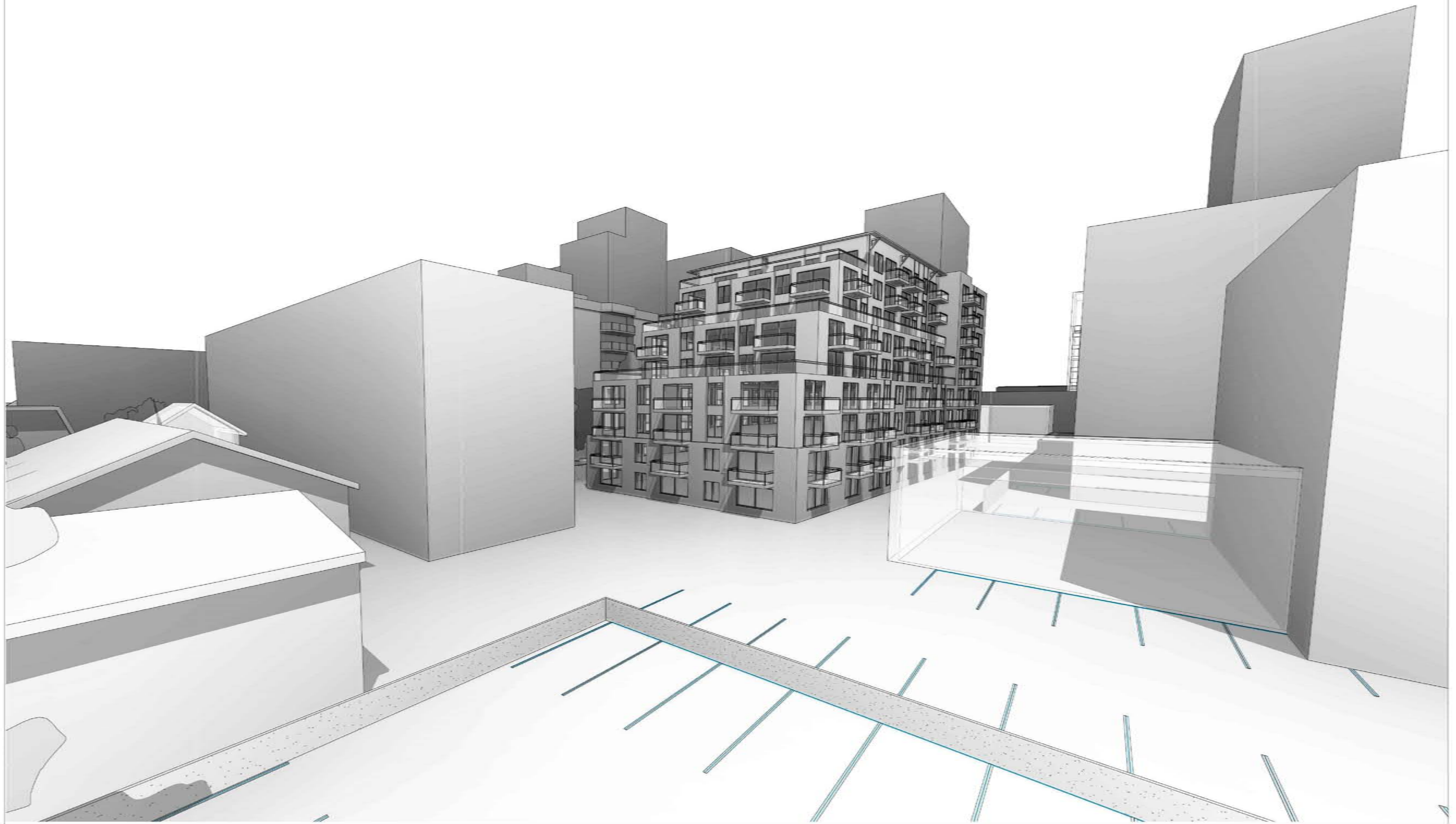




RENDERING #1



RENDERING #2



RENDERING #3