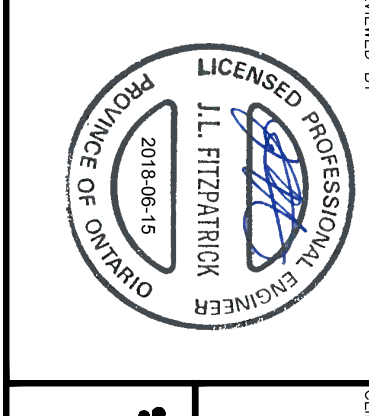
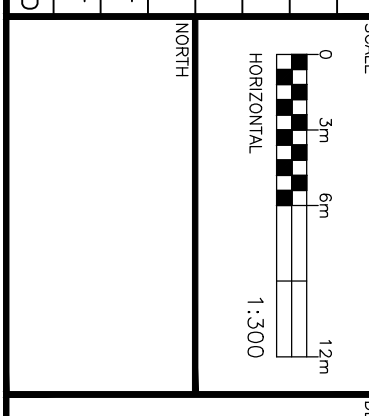


CAUTION
 OF ALL POLE LINES, CONDUITS, WATERMANS, SEWERS AND OTHER UNDERGROUND AND OVERGROUND UTILITIES AND STRUCTURES IS NOT NECESSARY AND SHALL BE DETERMINED BY THE CONTRACTOR WHERE SHOWN, THE ACCURACY OF THE POSITION OF SUCH UTILITIES AND BEFORE STARTING WORK, DETERMINE THE EXACT LOCATION OF ALL SUCH UTILITIES AND DAMAGE TO THEM.

REV	REVISION DESCRIPTION	DATE	BY	APPD
1	ISSUED FOR SITE PLAN SUBMISSION	15/06/18	SAB	BMT
2	CONCEPT ISSUED TO CLIENT	23/03/18	SAB	BMT

REV	REVISION DESCRIPTION	DATE	BY	APPD
1	ISSUED FOR SITE PLAN SUBMISSION	15/06/18	SAB	BMT
2	CONCEPT ISSUED TO CLIENT	23/03/18	SAB	BMT



exp.
 ASHCROFT HOMES
 18 ANTARES DRIVE
 OTTAWA, ON, K2E 1A9

DESIGN	UJF
CHECKED	BMT
PROJECT MANAGER	SAB
APPROVED	BMT

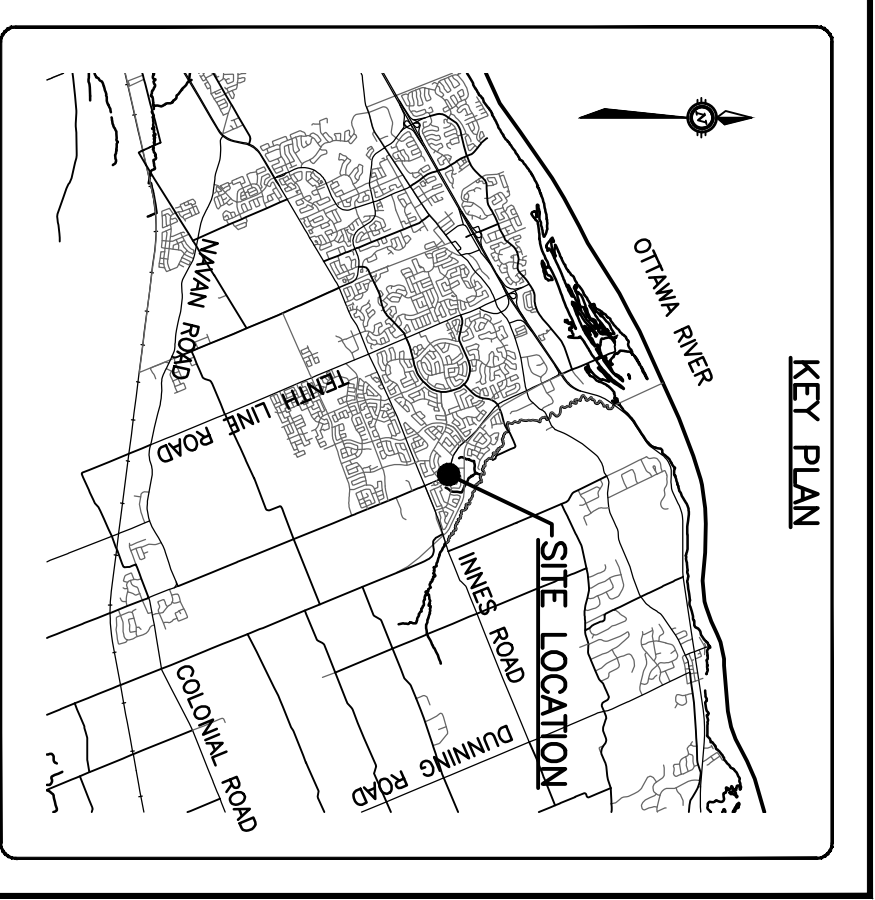
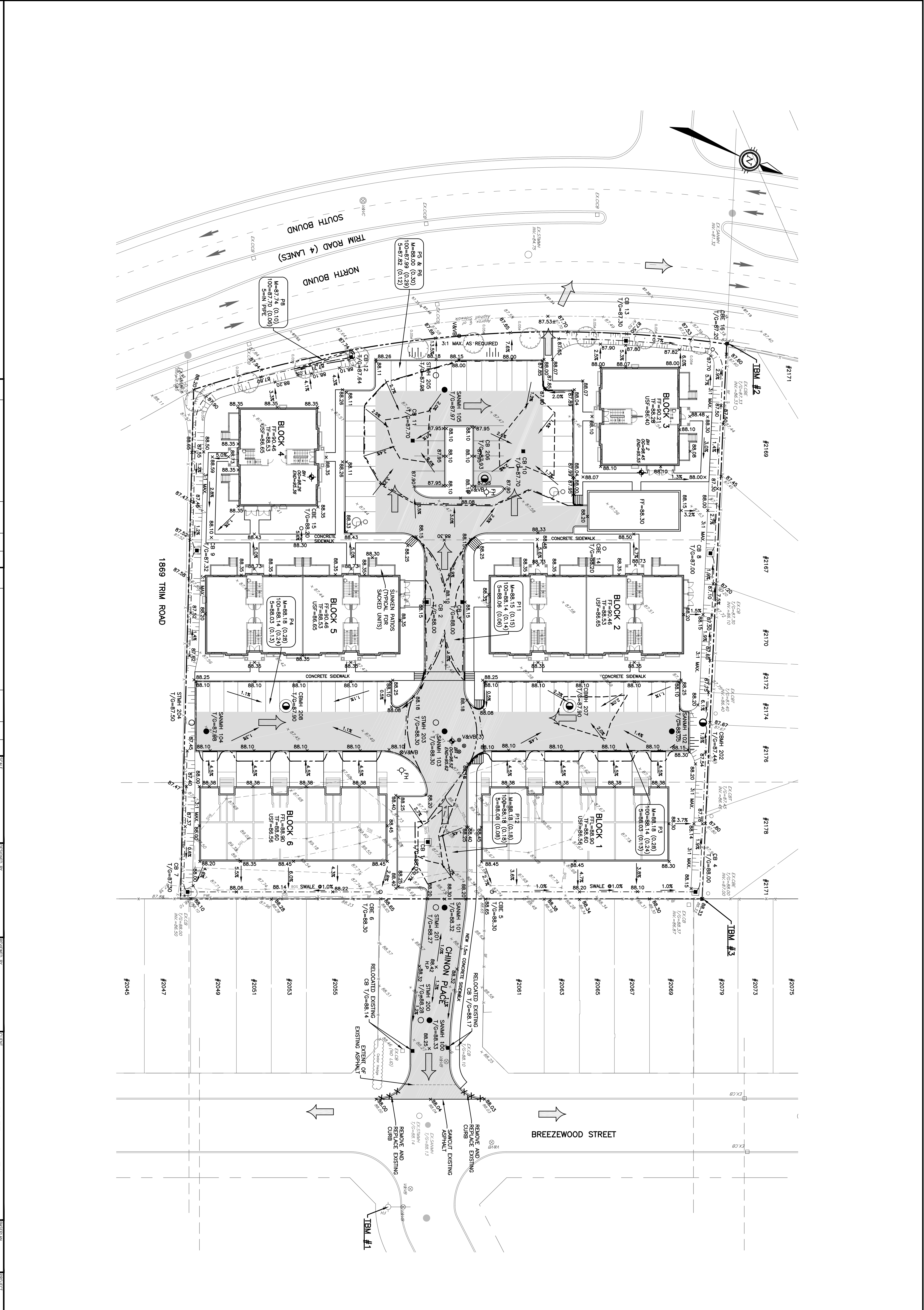
PROJECT
 OAKRIDGE GATE, PHASE II
 OTTAWA, ONTARIO

TITLE
 SITE GRADING PLAN

PROJECT No.
 OTT-00245026-AD

DATE
 MARCH 2018

CO2



BENCHMARKS
 BENCHMARK INFORMATION PROVIDED BY ANNS, OSULLIVAN, VOLLEBERK LTD., AS SHOWN ON TOPOGRAPHIC SURVEY (NOTED BELOW)

BM #1
 TOP OF FIRE HYDRANT SPINDLE ELEVATION=89.10m

BM #2
 TOP OF C/SB
 NORTHING=2637920.06, EASTING=395246.53

BM #3
 TOP OF C/SB
 NORTHING=5037952.73, EASTING=395356.33

TOPOGRAPHIC INFORMATION
 TOPOGRAPHIC INFORMATION PROVIDED BY ANNS, OSULLIVAN, VOLLEBERK LTD., JOB # 18621-18, JANUARY 25, 2018.

LEGAL INFORMATION
 M-PLAN PROVIDED BY ANNS, OSULLIVAN, VOLLEBERK LTD., JOB # 18992-17, RECEIVED ON FEBRUARY 15, 2018.