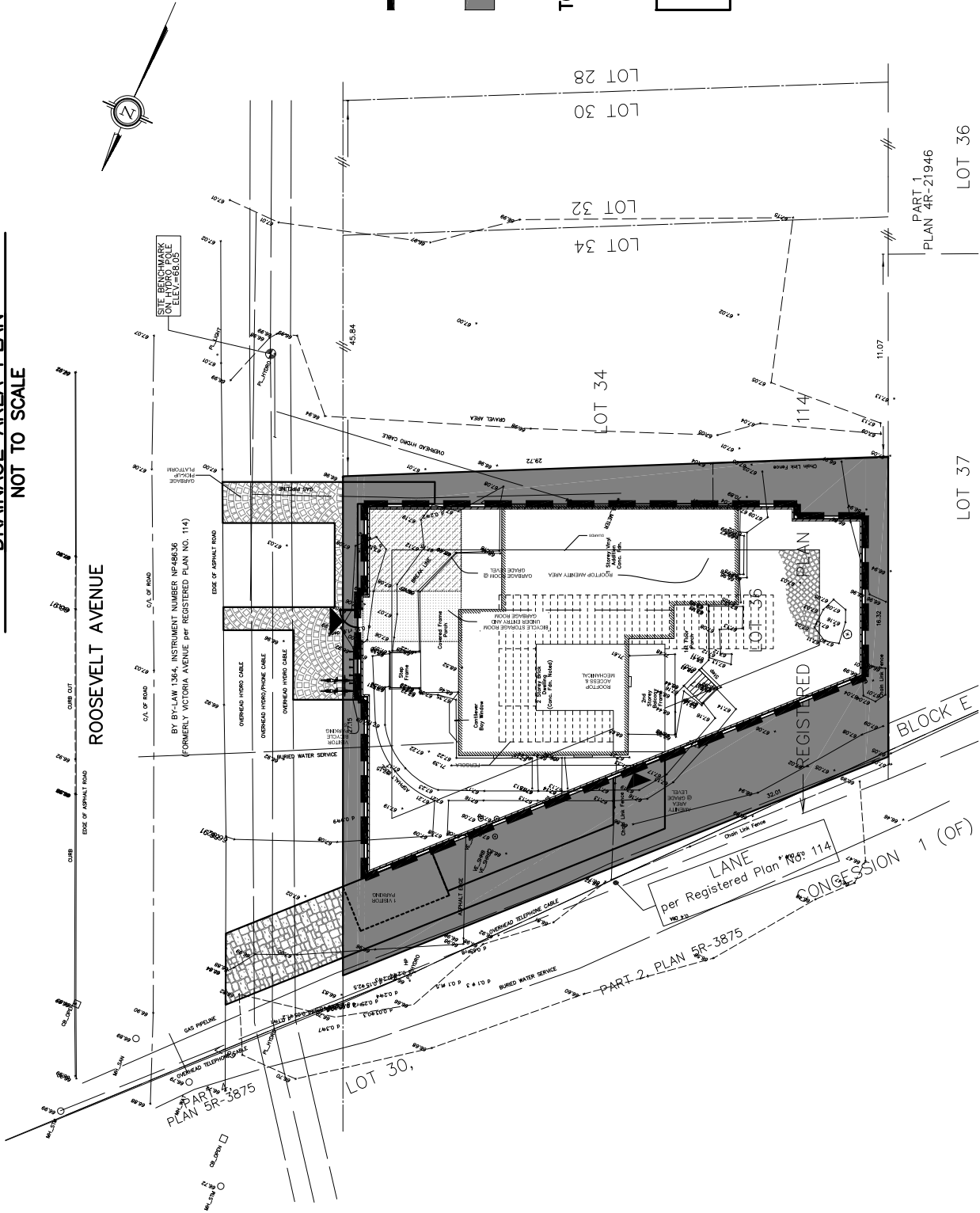


**PROPOSED 342 ROOSEVELT AVENUE  
SITE DEVELOPMENT  
DRAINAGE AREA PLAN  
NOT TO SCALE**



**LEGEND**

— — — — —  
LIMIT OF CONTROLLED  
STORM DRAINAGE AREA  
=405.20 SQ. M

■ ■ ■ ■ ■  
UNCONTROLLED  
STORM DRAINAGE AREA  
=240.5 SQ. M

TOTAL AREA = 645.7 SQ. M

POST-DEVELOPMENT SITE  
AVERAGE "C" = 0.70

**FIGURE 1**