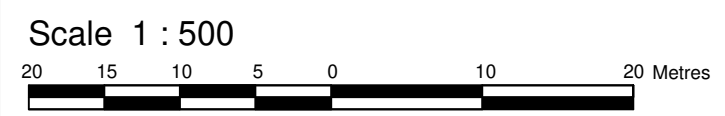


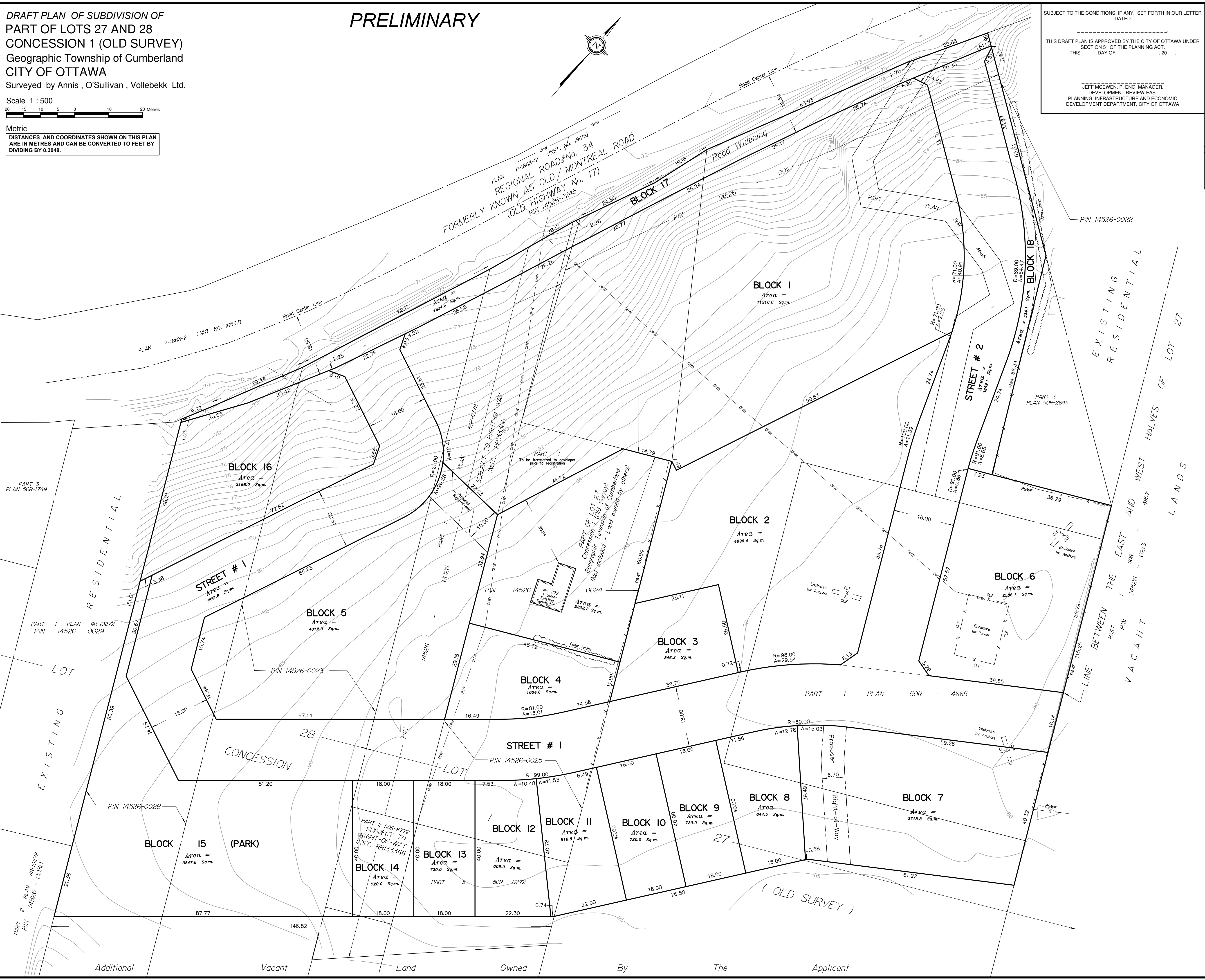
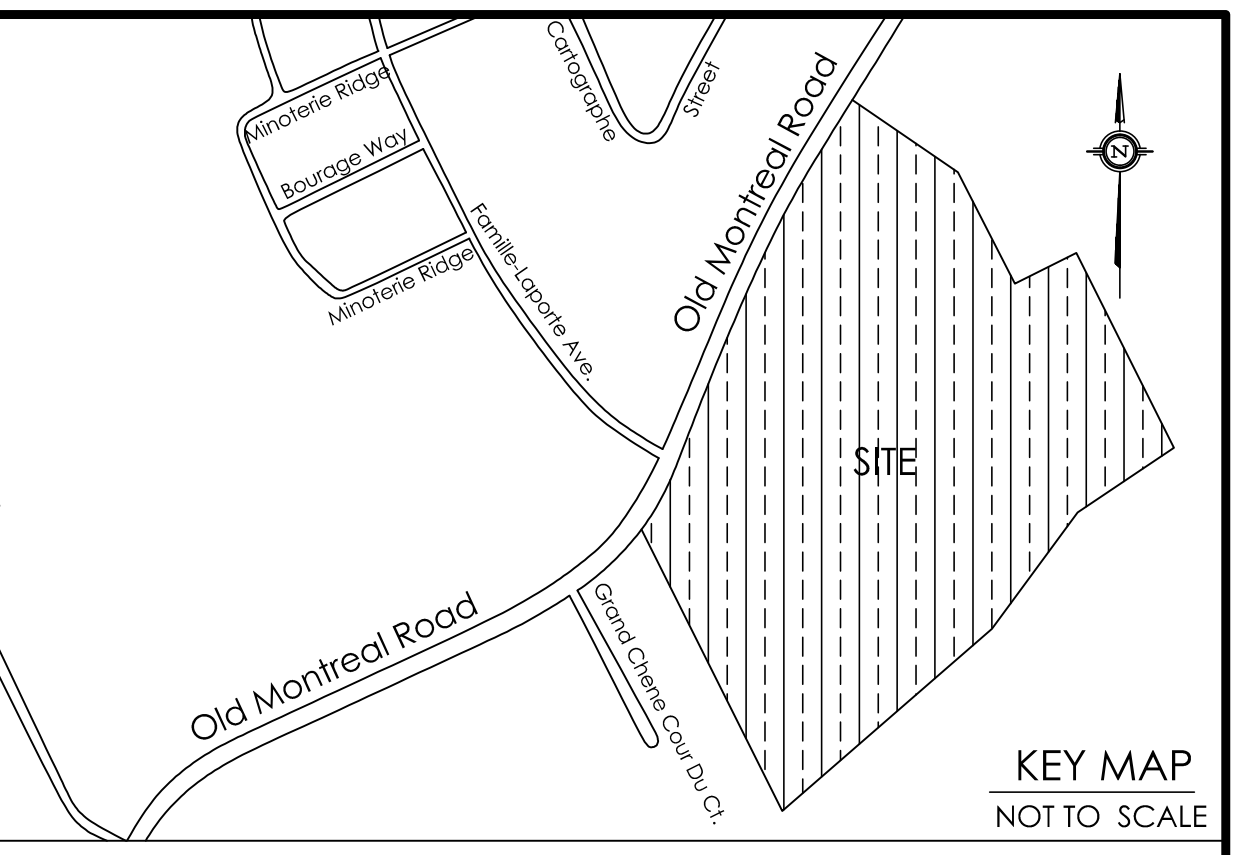
DRAFT PLAN OF SUBDIVISION OF
PART OF LOTS 27 AND 28
CONCESSION 1 (OLD SURVEY)
Geographic Township of Cumberland
CITY OF OTTAWA
Surveyed by Annis, O'Sullivan, Vollebek Ltd.

PRELIMINARY



Metric
DISTANCES AND COORDINATES SHOWN ON THIS PLAN
ARE IN METRES AND CAN BE CONVERTED TO FEET BY
DIVIDING BY 0.3048.

SUBJECT TO THE CONDITIONS, IF ANY, SET FORTH IN OUR LETTER
DATED _____
THIS DRAFT PLAN IS APPROVED BY THE CITY OF OTTAWA UNDER
SECTION 51 OF THE PLANNING ACT.
THIS _____ DAY OF _____, 20____
JEFF MCEWEN, P. ENG. MANAGER,
DEVELOPMENT REVIEW-EAST
PLANNING, INFRASTRUCTURE AND ECONOMIC
DEVELOPMENT DEPARTMENT, CITY OF OTTAWA



SURVEYOR'S CERTIFICATE

I CERTIFY THAT:
The boundaries of the lands to be subdivided and their relationship
to adjoining lands have been accurately and correctly shown.

Date _____
Richard R. Gauthier
ONTARIO LAND SURVEYOR

OWNER'S CERTIFICATE

This is to certify that I am the owner / agent of the lands to be
subdivided and that this plan was prepared in accordance with
my instructions.

Date _____
PHOENIX HARBOUR
OLD MONTREAL ROAD INC.
I have the authority to bind the corporation

ADDITIONAL INFORMATION REQUIRED UNDER
SECTION 51-17 OF THE PLANNING ACT

- (a) see plan
- (b) see plan
- (c) see plan
- (d) residential housing, park land
- (e) see plan
- (f) see plan
- (g) see plan
- (h) City of Ottawa
- (i) see soils report
- (j) see plan
- (k) all municipal services to be available
- (l) see plan