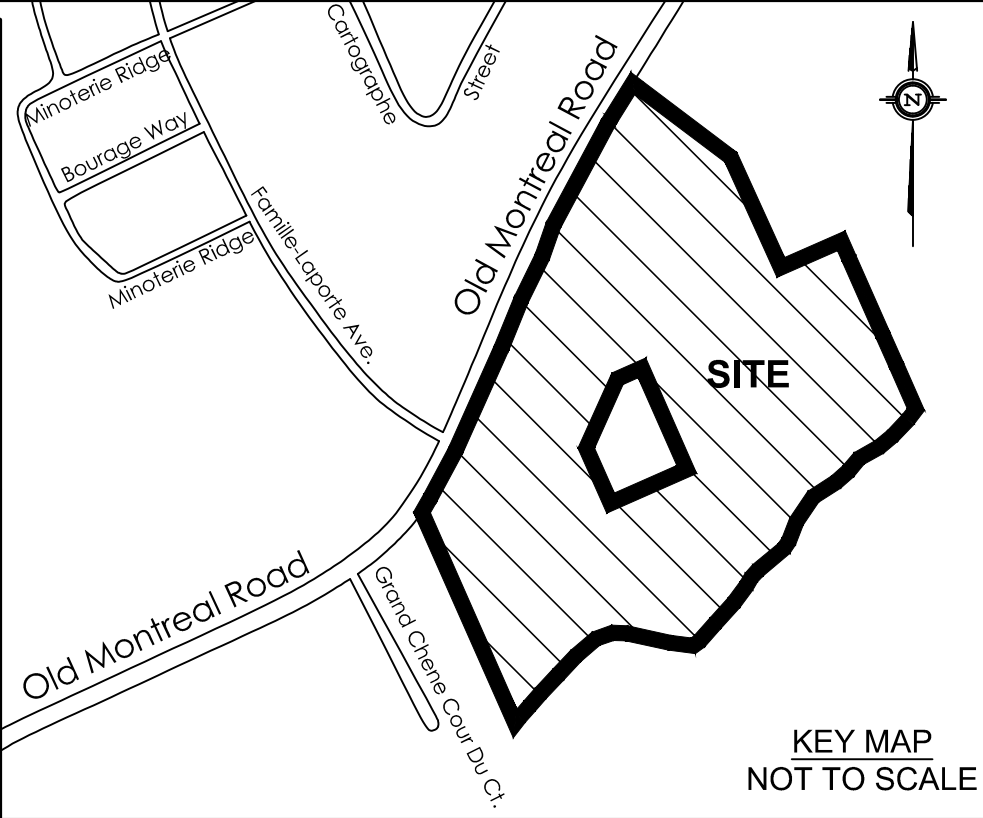


SUBJECT TO THE CONDITIONS, IF ANY, SET FORTH IN OUR LETTER DATED _____

THIS DRAFT PLAN IS APPROVED BY THE CITY OF OTTAWA UNDER SECTION 51 OF THE PLANNING ACT. THIS _____ DAY OF _____, 20____.

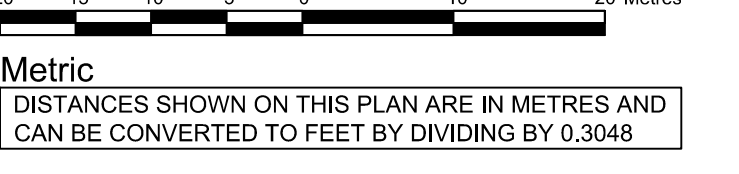
GERALDINE WILDMAN RFP MGMT. MANAGER
DEVELOPMENT REVIEW-EAST
PLANNING REAL ESTATE AND ECONOMIC
DEVELOPMENT DEPARTMENT, CITY OF OTTAWA



**DRAFT PLAN OF SUBDIVISION OF
PART OF LOTS 27 and 28
CONCESSION 1 (OLD SURVEY)
Geographic Township of Cumberland
CITY OF OTTAWA**

Surveyed by Annis, O'Sullivan, Vollebek Ltd.

Scale 1 : 500



SURVEYOR'S CERTIFICATE

I CERTIFY THAT:
The boundaries of the lands to be subdivided and their relationship to adjoining lands have been accurately and correctly shown.

Date _____
T. Harwick
ONTARIO LAND SURVEYOR

OWNER'S CERTIFICATE

This is to certify that I am the owner / agent of the lands to be subdivided and that this plan was prepared in accordance with my instructions.

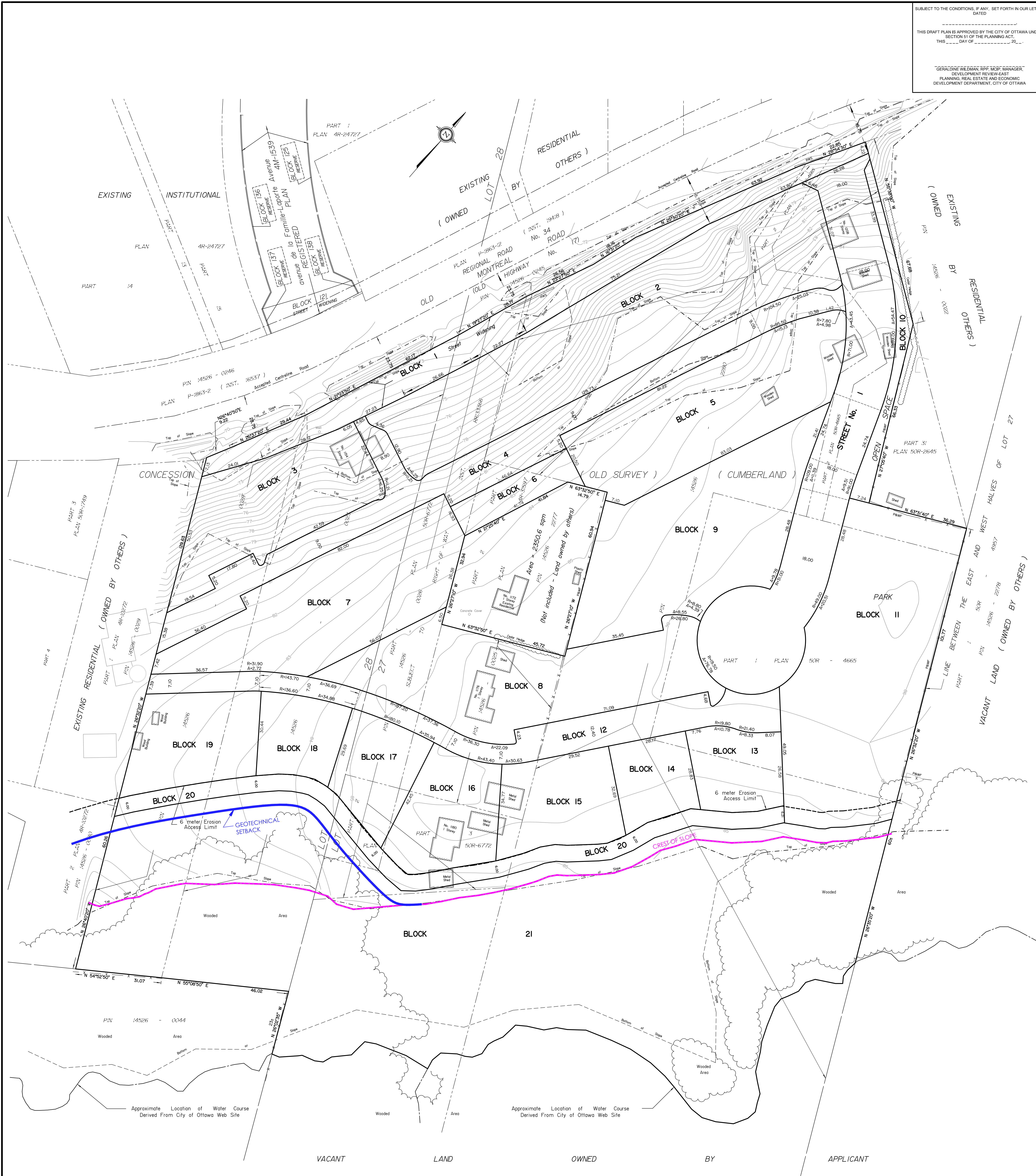
Date _____
PHOENIX HARBOUR
OLD MONTREAL ROAD INC.
I have authority to bind the corporation

ADDITIONAL INFORMATION REQUIRED UNDER SECTION 51-17 OF THE PLANNING ACT

- (a) see plan
- (b) see plan
- (c) see plan
- (d) multi-family residential housing, park land, open space
- (e) see plan
- (f) see plan
- (g) see plan
- (h) City of Ottawa
- (i) see soils report
- (j) see plan
- (k) sanitary, storm sewers, municipal water, bell, hydro, cable and gas to be available
- (l) see plan

PROPOSED LAND USE TABLE

USE	BLOCK	NO. OF UNITS	AREA (sqm)
WIDENING	1		2 262
MULTI-FAMILY RESIDENTIAL	2	144	5 598
RESIDENTIAL	3	48	2 359
PRIVATE STREET	4		3 076
	5	89	3 342
MULTI-FAMILY RESIDENTIAL	6	FUTURE RESIDENTIAL	539
	7	59	3 435
	8	36	3 759
	9	28	3 957
OPEN SPACE	10		519
PARK	11		5 166
PRIVATE STREET	12		2 172
	13	6	938
	14	6	829
MULTI-FAMILY RESIDENTIAL	15	6	1 409
	16	4	1 415
	17	4	1 048
	18	4	869
	19	5	1 495
MULTI USE PATHWAY	20		1 570
CREEK CORRIDOR	21		19 549±
ROAD STREET			4 163
TOTAL		439	68 470±



Approximate Location of Water Course Derived From City of Ottawa Web Site

Approximate Location of Water Course Derived From City of Ottawa Web Site

VACANT LAND OWNED BY APPLICANT