

**PROJECT INFORMATION**

SITE AREA = ..... 742.3m<sup>2</sup>  
 (7990sq.ft.)  
 BUILDING AREA  
 (max. footprint) = ..... 605m<sup>2</sup>  
 (6510 sq.ft.)  
 LANDSCAPED AREA = .....88m<sup>2</sup> (11.9%)  
 No. of STORIES = ..... 14  
 No. of Dwelling Units = ..... 84 (includes 9 third floor  
 units designated as affordable housing)  
**PARKING REQUIRED**  
 SCHEDULE 1A AREA X  
 1st 12 UNITS = ..... 0  
 72 UNITS @ 0.5 SPACES/ UNIT = ..... 36  
 LESS 10% U/G = ..... 3.6  
 TOTAL SPACES REQUIRED = ..... 32  
 VISITOR PARKING REQUIRED  
 1st 12 UNITS = ..... 0  
 72 UNITS @ 0.1 = ..... 7  
 TOTAL PARKING REQUIRED = 39 SPACES

**PARKING PROVIDED**  
 U/G LEVEL = 16 SPACES (INCL. 1 BARRIER FREE SPACE)  
 GROUND = 8 SPACES  
 SECOND = 11 SPACES  
 TOTAL PARKING PROVIDED = 35 SPACES

**BICYCLE PARKING REQUIRED**

84 D.U. X 0.5 = 42 SPACES REQUIRED

**BICYCLE PARKING PROVIDED**  
 30 HORIZONTAL SPACES  
 12 VERTICAL SPACES  
 TOTAL PROVIDED = 42 SPACES

**APARTMENT UNITS**

FLOOR 3 @ 9 D.U./ FLR = 9 UNITS (AFFORDABLE HOUSING)  
 FLOORS 3-7 @ 8 D.U./FLR = 40 UNITS  
 FLOORS 8-12 @ 7 D.U./FLR = 35 UNITS > 75 UNITS  
 14TH FLOOR - AMENITY AREA 358m<sup>2</sup> (3855 sq.ft.)

TOTAL DWELLING UNITS = 84

GFA per ZONING DEFINITION = 4325m<sup>2</sup>  
 PROPOSED FSI = 5.83

**AMENITY AREA REQUIRED**

84 D.U. X 6m<sup>2</sup> = 504m<sup>2</sup>

**AMENITY AREA PROVIDED**

COMMUNAL AREA:

- INTERIOR = 243m<sup>2</sup>

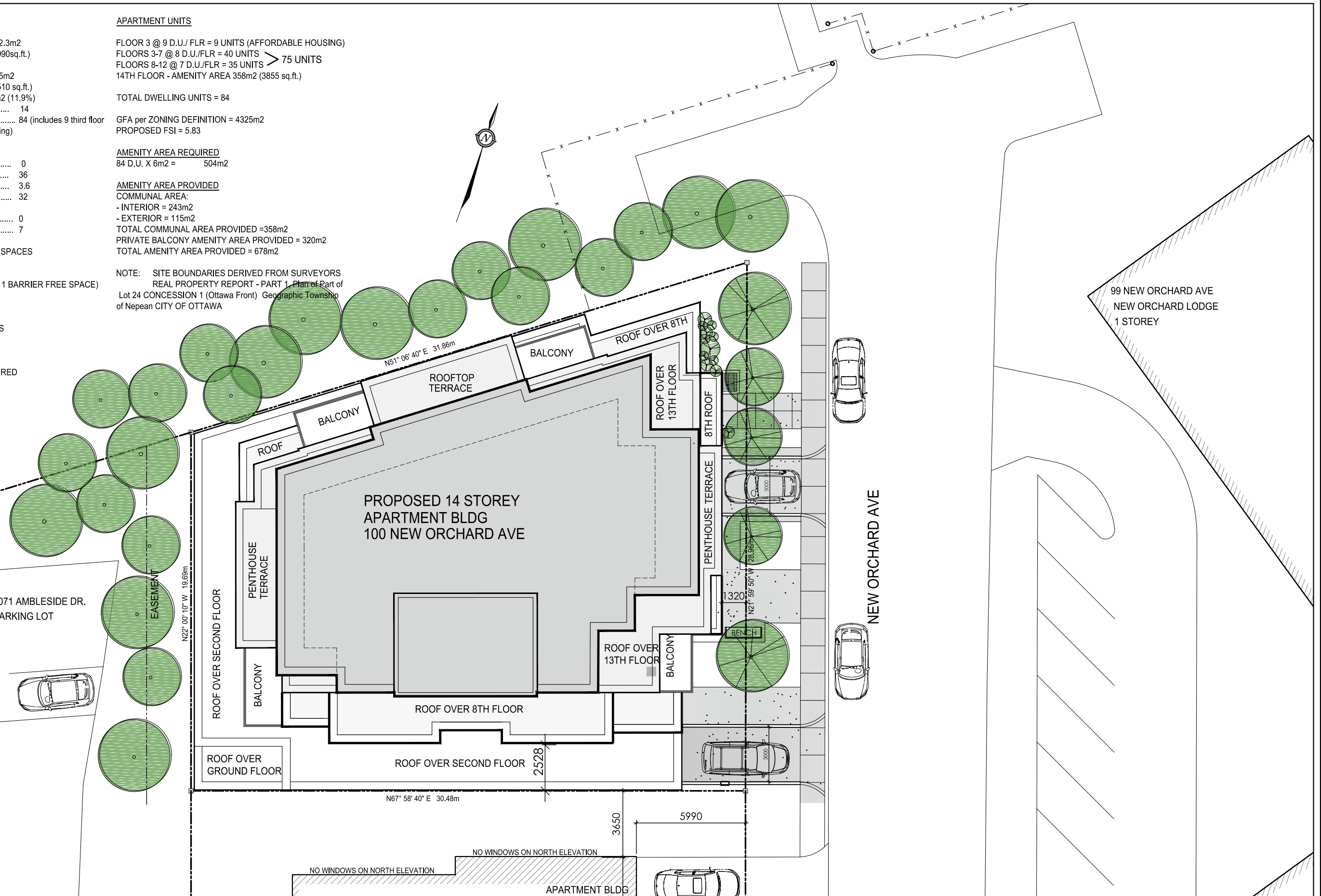
- EXTERIOR = 115m<sup>2</sup>

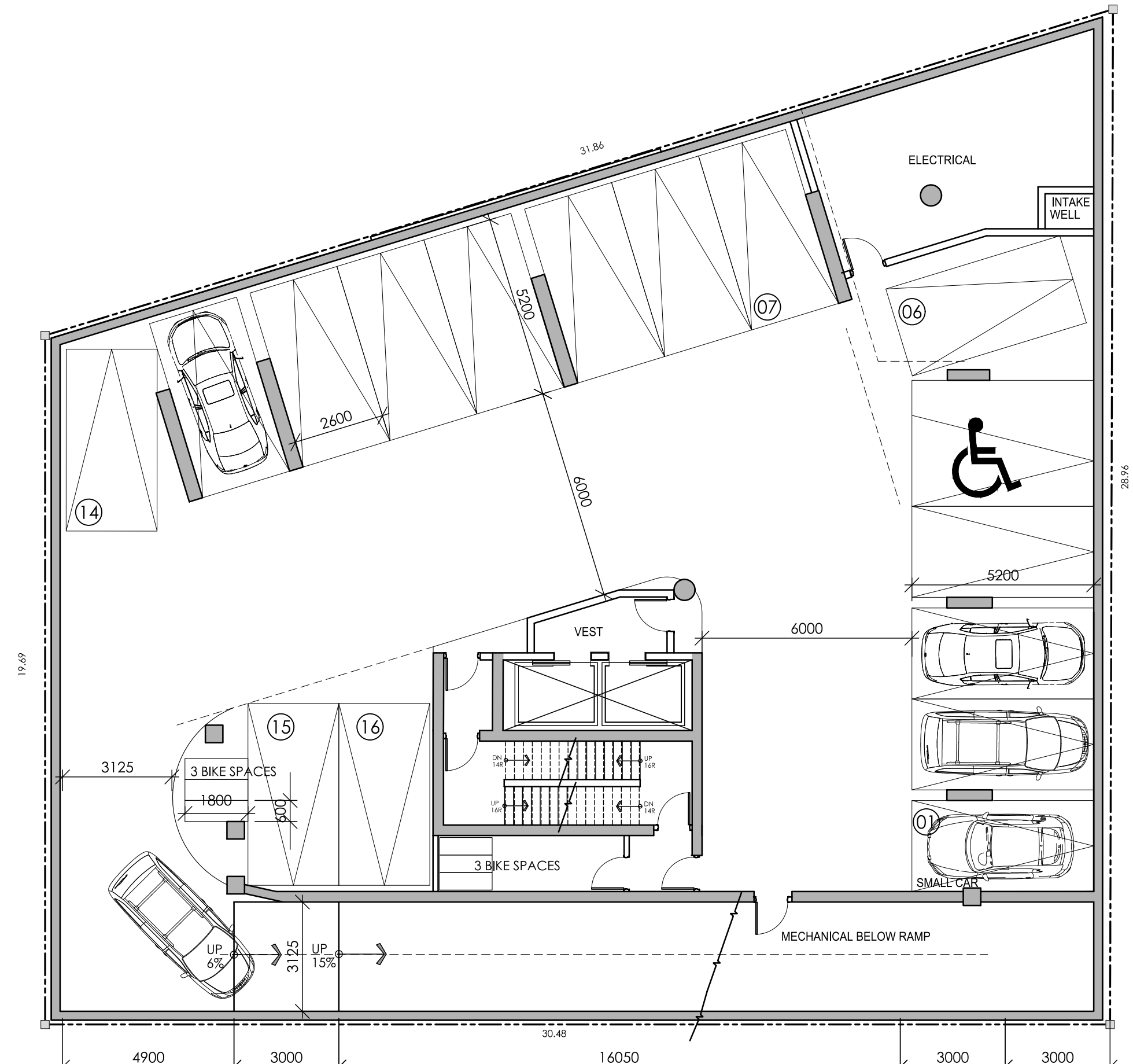
TOTAL COMMUNAL AREA PROVIDED = 358m<sup>2</sup>

PRIVATE BALCONY AMENITY AREA PROVIDED = 320m<sup>2</sup>

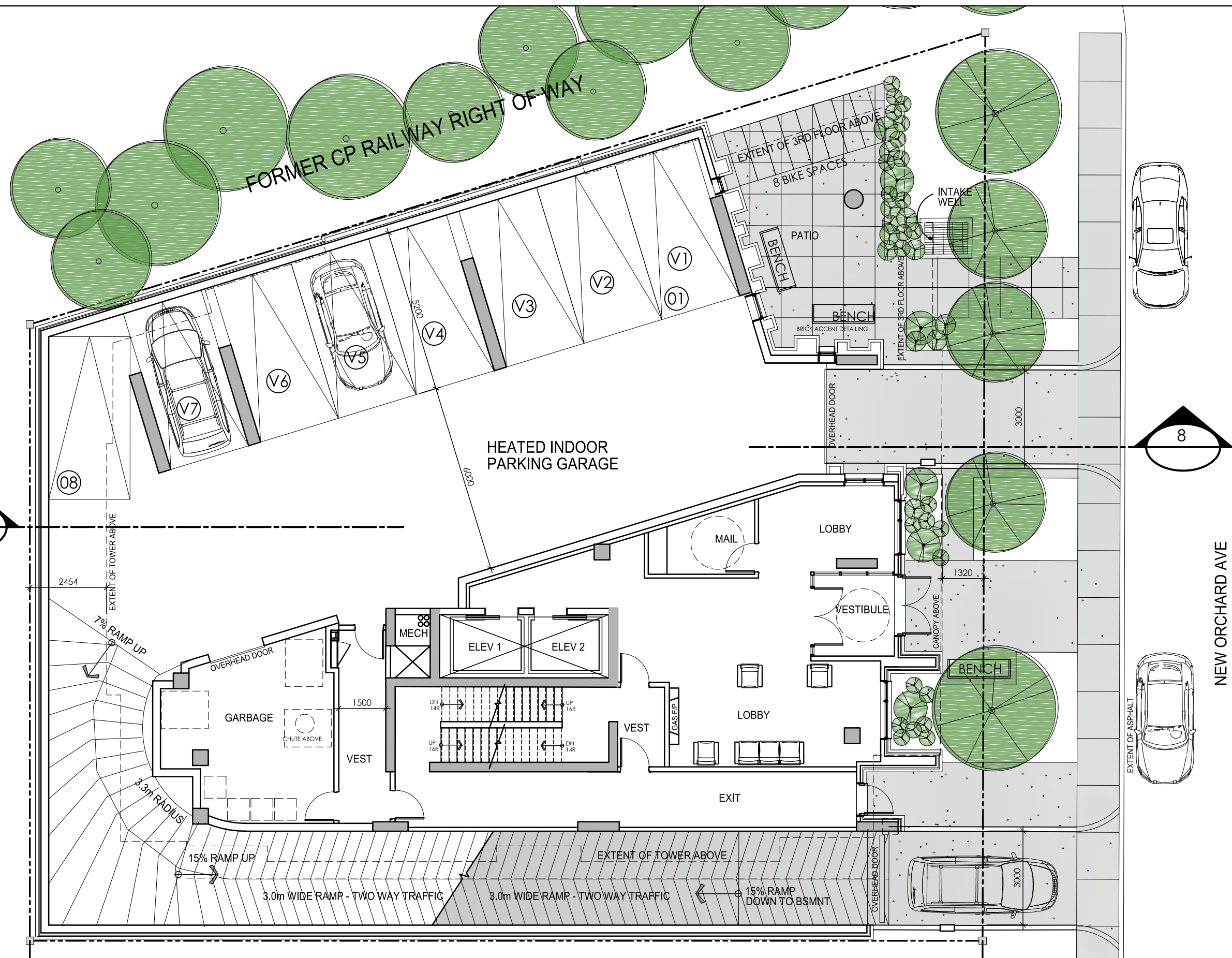
TOTAL AMENITY AREA PROVIDED = 678m<sup>2</sup>

NOTE: SITE BOUNDARIES DERIVED FROM SURVEYORS  
 REAL PROPERTY REPORT - PART 1 Plan of Part of  
 Lot 24 CONCESSION 1 (Ottawa Front) Geographic Township  
 of Nepean CITY OF OTTAWA

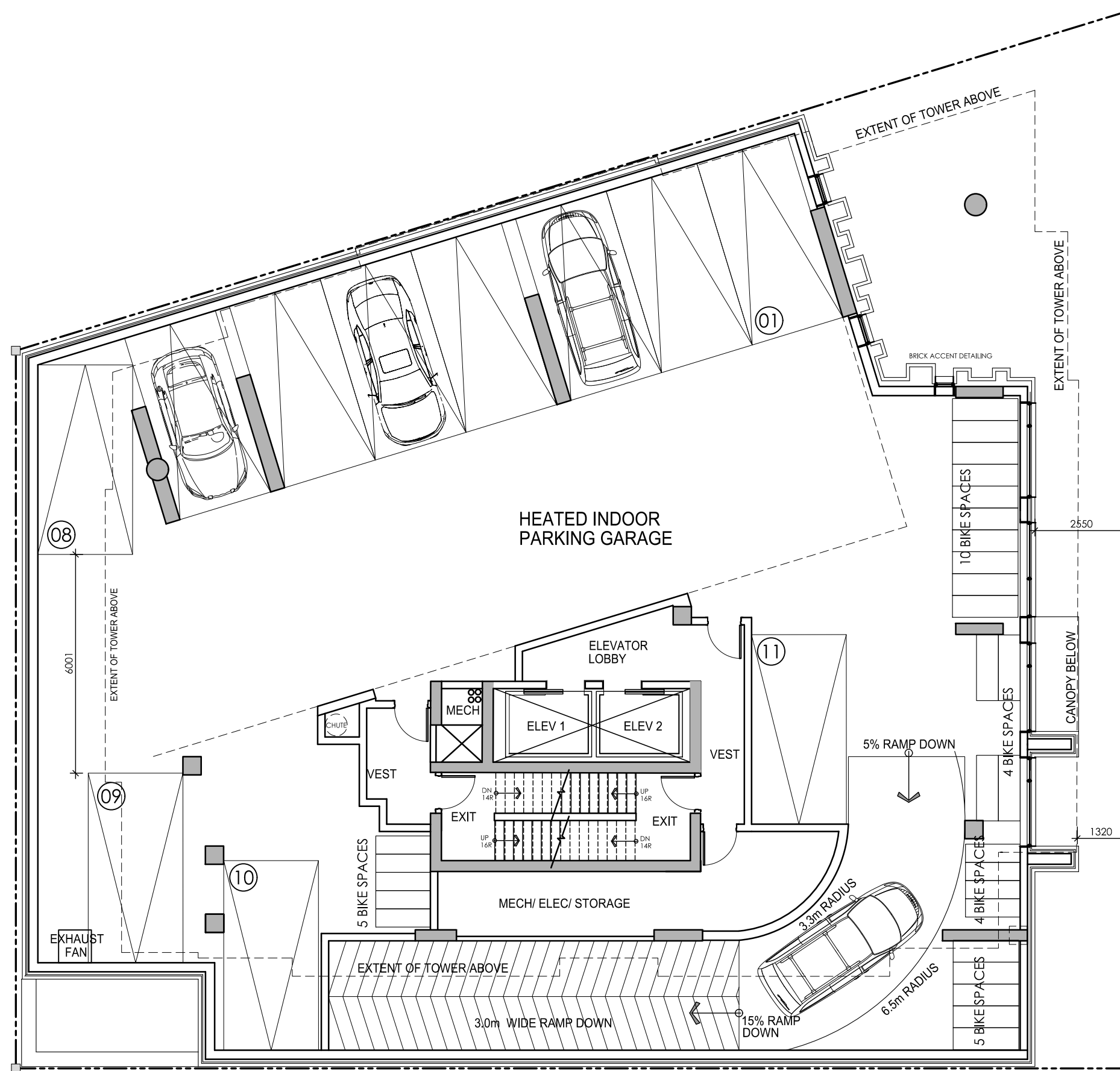




1 BASEMENT PLAN FOR PROPOSED 14 STOREY TOWER - GROSS AREA = 7790 sq.ft.  
SCALE: 1:125



2 GROUND FLOOR FOR PROPOSED 14 STOREY TOWER - GROSS AREA = 6510 sq.ft.  
SCALE = 1: 125

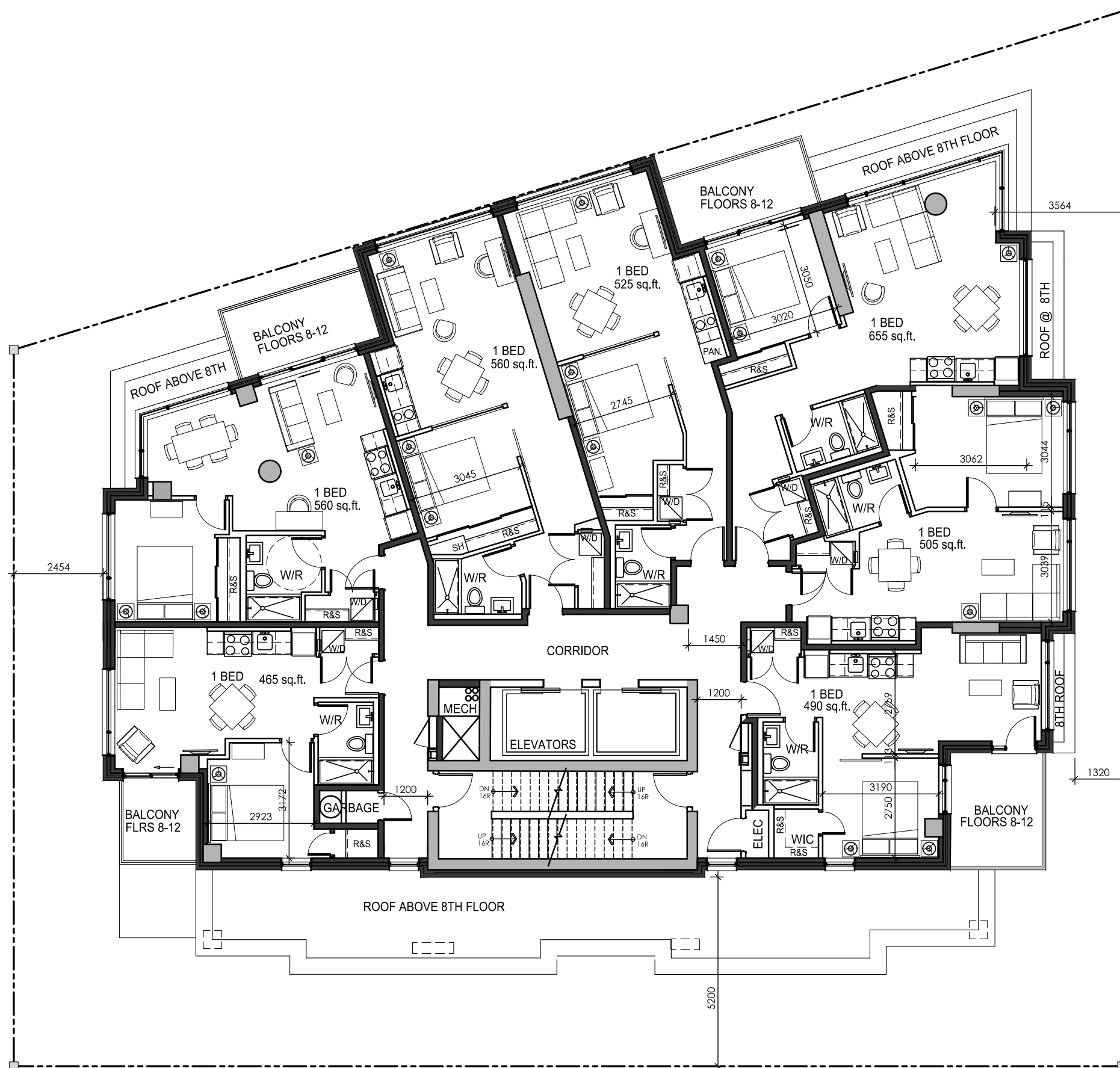


3 SECOND FLOOR FOR PROPOSED 14 STOREY TOWER - GROSS AREA = 6520 sq.ft.  
SCALE: 1:125

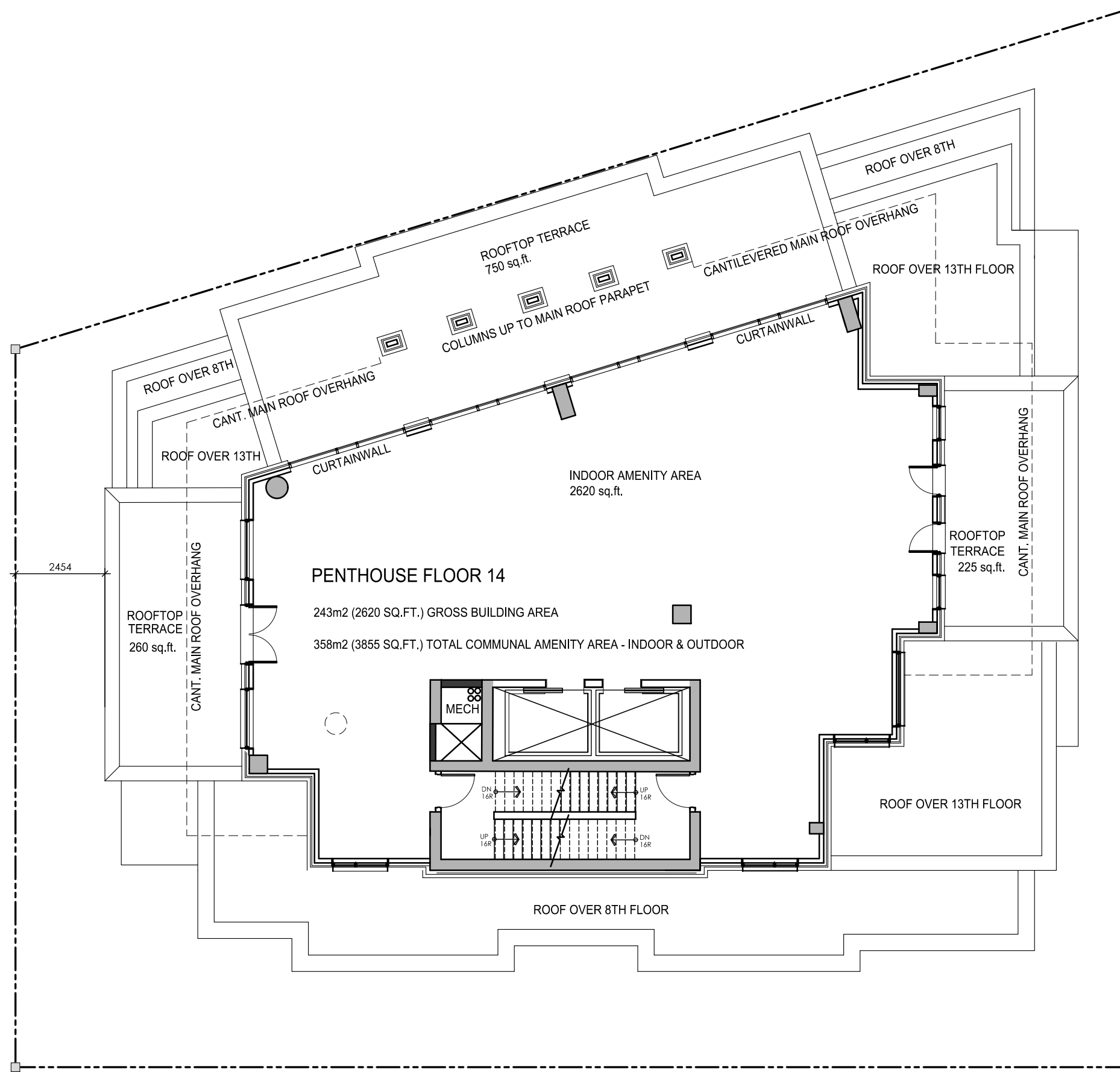




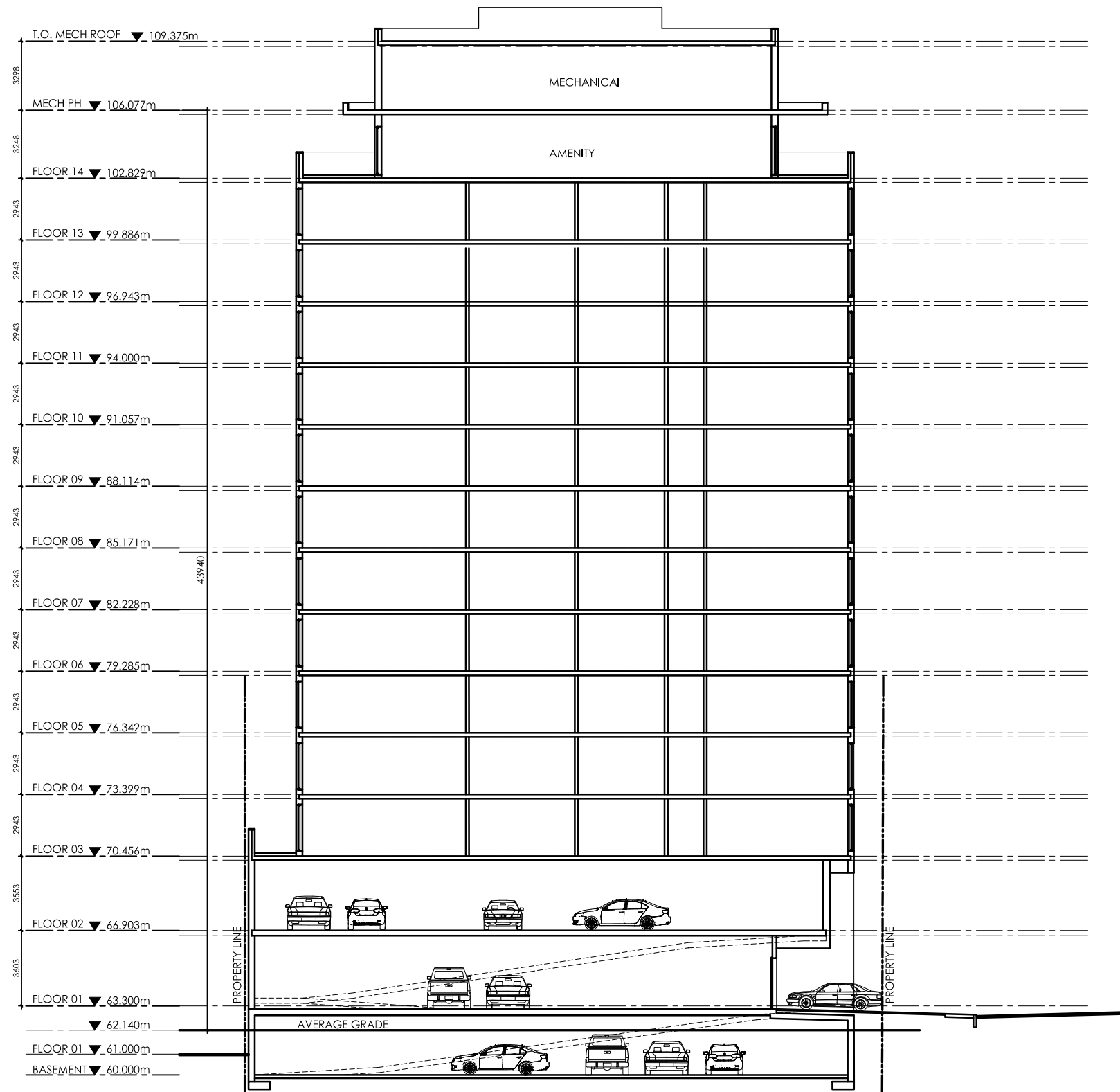
5 4TH - 8TH FLOOR FOR PROPOSED 14 STOREY TOWER - 8 D.U. PER FLOOR - GROSS AREA = 5485 SQ.FT.  
 SCALE: 1:125



6 9TH - 13TH FLOOR FOR PROPOSED 14 STOREY TOWER - 7 D.U. PER FLOOR - GROSS AREA = 4640 SQ.FT.  
 SCALE: 1:125







8 BUILDING SECTION FOR PROPOSED 14 STOREY TOWER  
SCALE: 1:250