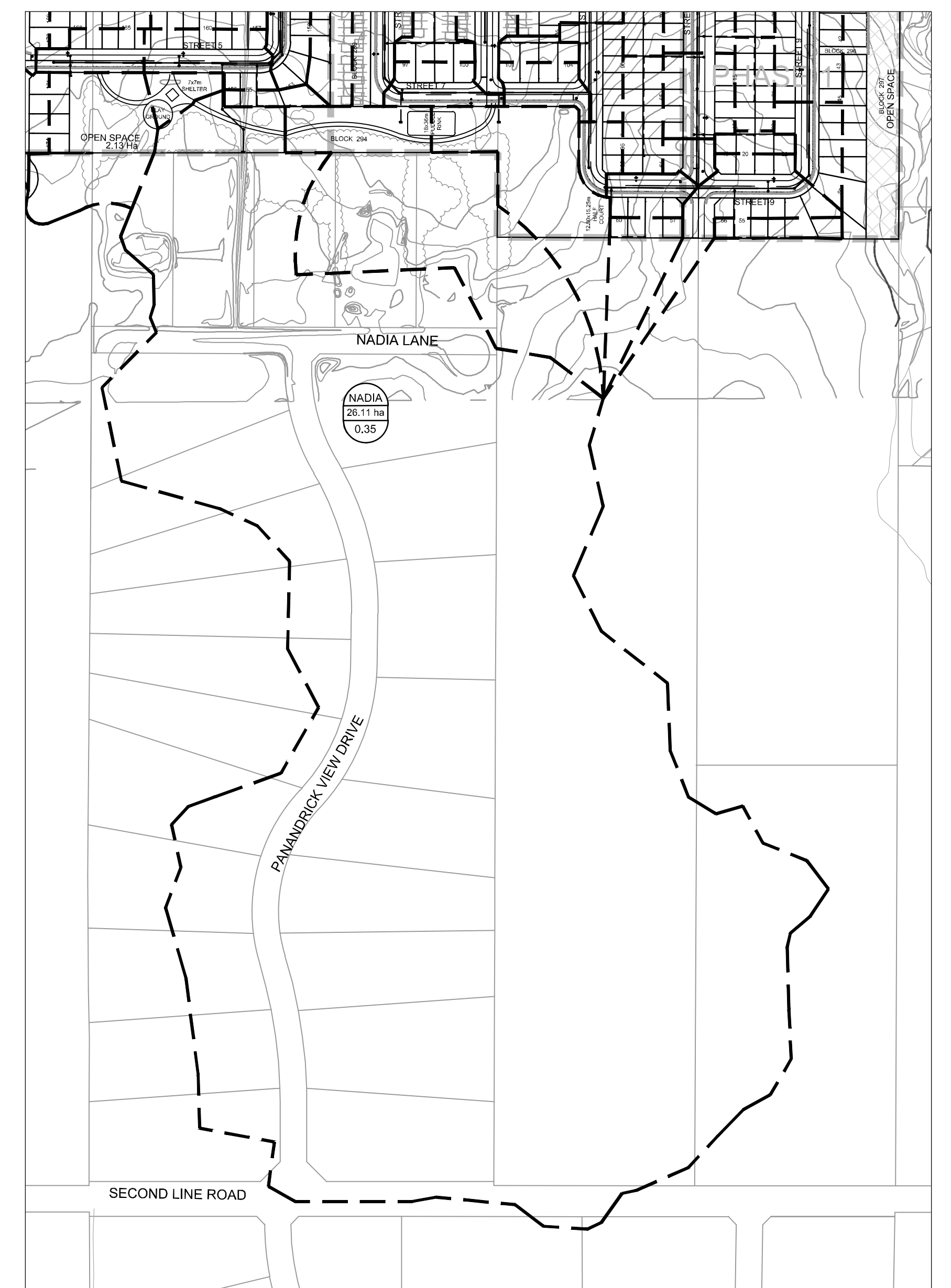


- LEGEND**
- 675mmØ PROPOSED STORM MANHOLE & SEWER
 - 675mmØ PROPOSED STORM MANHOLE & SEWER CONVEYING OFFSITE DRAINAGE
 - 224 PROPOSED CATCHBASIN/MANHOLE & LEAD
 - 240 PROPOSED CATCHBASIN & LEAD
 - 250mmØ PROPOSED REAR YARD CATCHBASIN & SUB-DRAIN
 - AREA IDENTIFICATION
 - DRAINAGE AREA (hectares)
 - RUN-OFF COEFFICIENT
 - ➔ DIRECTION OF FUTURE STORM MINOR FLOW



OFFSITE STORM AREA
SCALE 1:3000

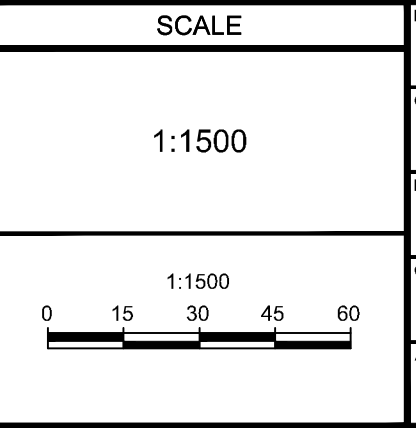
REFER TO OFFSITE STORM AREA VIEW

REFER TO _____ FOR ADDITIONAL NOTES

NOTE:
THE POSITION OF ALL POLE LINES, CONDUITS, WATERMANS, SEWERS AND OTHER UNDERGROUND AND OVERGROUND UTILITIES AND STRUCTURES IS NOT NECESSARILY SHOWN ON THE CONTRACT DRAWINGS, AND WHERE SHOWN, THE ACCURACY OF THE POSITION OF SUCH UTILITIES AND STRUCTURES IS NOT GUARANTEED. BEFORE STARTING WORK, DETERMINE THE EXACT LOCATION OF ALL SUCH UTILITIES AND STRUCTURES AND ASSUME ALL LIABILITY FOR DAMAGE TO THEM.

**PRELIMINARY
NOT FOR
CONSTRUCTION**

No.	REVISION	DATE	BY
2	REVISED AS PER CITY OF OTTAWA COMMENTS	MAY 13/19	MSP
1	ISSUED FOR DRAFT PLAN OF SUBDIVISION APPLICATION	JULY 23/18	MSP



SCALE	FOR REVIEW ONLY
1:1500	SAZ
	DOB
	RBG
	SAZ
	MSP



CITY OF OTTAWA
CU DEVELOPMENTS INC.
1053, 1075 AND 1145 MARCH ROAD
DRAWING NAME
STORM DRAINAGE AREA PLAN

PROJECT NO.	116132-00
REV	REV # 2
DRAWING NO.	116132-STM

C:\Users\116132-00\Documents\116132-STM\Drawings\PLANS\B1 - May 15, 2019 - 4:02pm.dwg

#17801
D07-16-18-0023