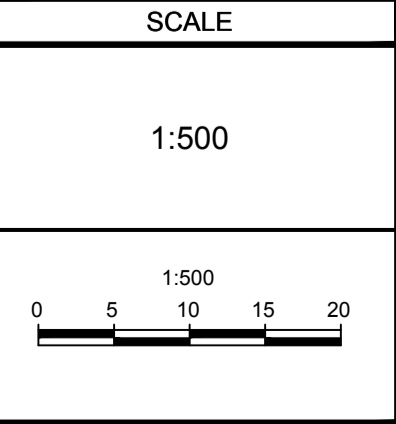


**NOTE:**  
THE POSITION OF ALL POLE LINES, CONDUITS, WATERMANS, SEWERS AND OTHER UNDERGROUND AND OVERGROUND UTILITIES AND STRUCTURES IS NOT NECESSARILY SHOWN ON THE CONTRACT DRAWINGS, AND WHERE SHOWN, THE ACCURACY OF THE POSITION OF SUCH UTILITIES AND STRUCTURES IS NOT GUARANTEED. BEFORE STARTING WORK, DETERMINE THE EXACT LOCATION OF ALL SUCH UTILITIES AND STRUCTURES AND ASSUME ALL LIABILITY FOR DAMAGE TO THEM.

No.	REVISION	DATE	BY
2.	REVISED PER CITY COMMENTS	MAY 13/19	BJB
1.	ISSUED FOR CITY OF OTTAWA REVIEW	SEPT 28/18	BJB



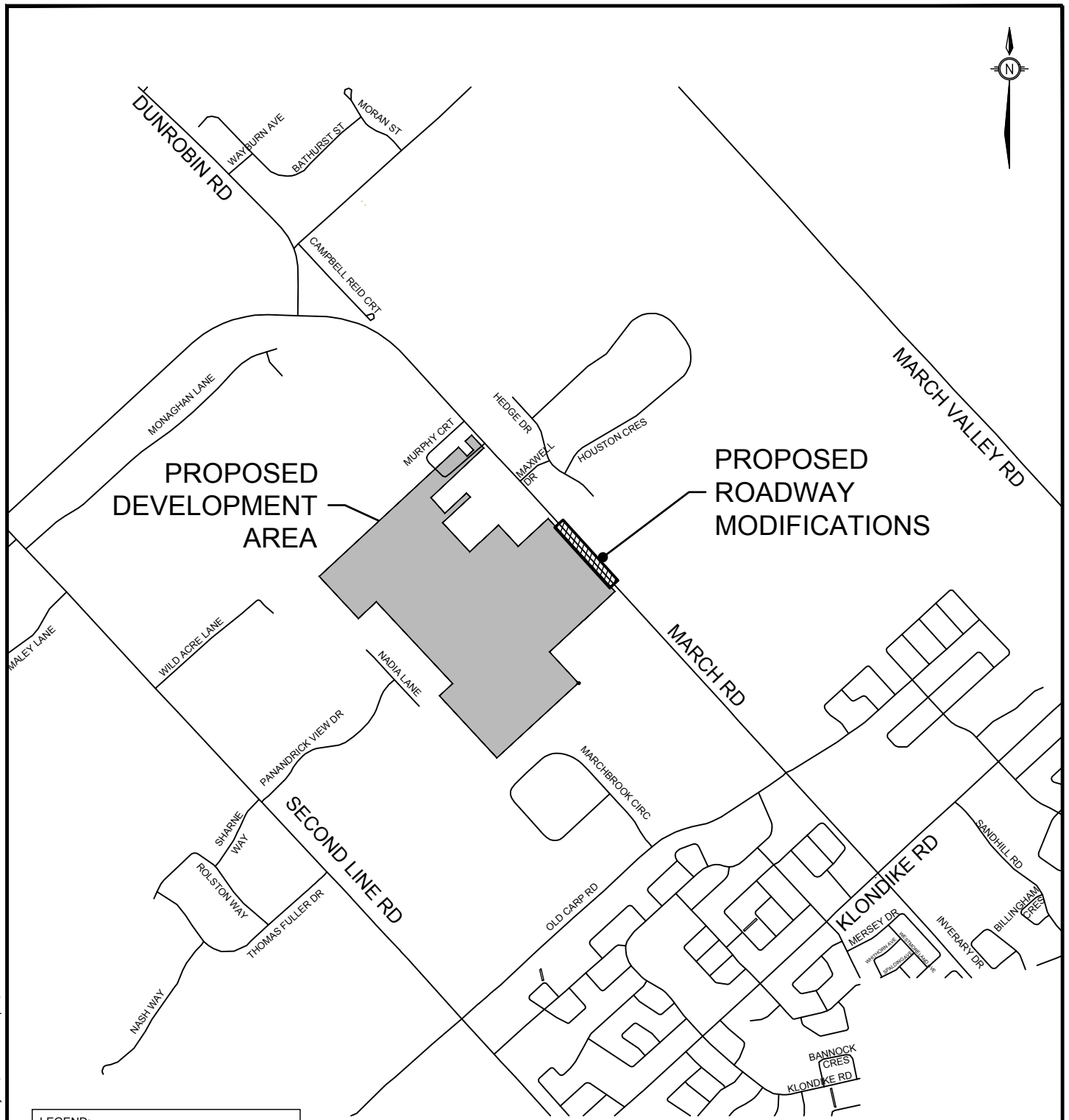
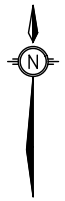
DESIGN	FOR REVIEW ONLY
BJB	
CHECKED JLL	
DRAWN RCH	
CHECKED BJB	
APPROVED JLL	

**NOVATECH**  
Engineers, Planners & Landscape Architects  
Suite 200, 240 Michael Cowpland Drive  
Ottawa, Ontario, Canada K2M 1P6

Telephone (613) 254-9643  
Facsimile (613) 254-5867  
Website www.novatech-eng.com

<b>LOCATION</b> CITY OF OTTAWA MULTIVESCO LANDS - KANATA NORTH		PROJECT No. 116132-00
<b>DRAWING NAME</b> MARCH ROAD/STREET 1 MODIFICATIONS FUNCTIONAL DESIGN		REV REV # 2
		DRAWING No. 116132-FD

M:\2018\116132\FD\116132-FD.dwg, 116132-RMA-FD, May 10, 2019, 2:31pm, rhiller



LEGEND:	
	PROPOSED ROADWAY MODIFICATION
	PROPOSED DEVELOPMENT AREA

M:\2016\116132\CAD\Design\116132-FD.dwg, RMA-keyplan, May 10, 2019 - 2:31pm, rhillier



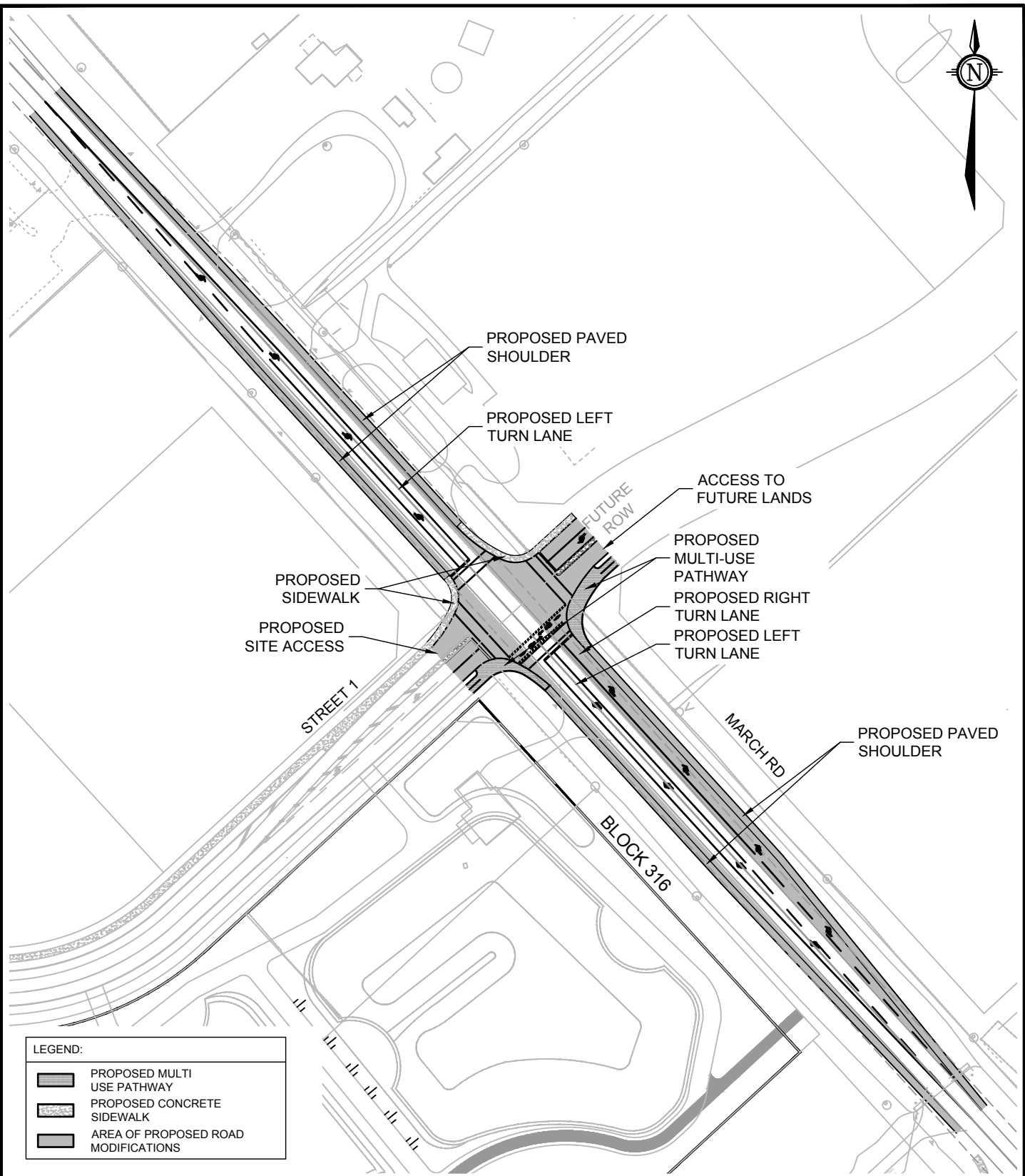
TRANSPORTATION SERVICES  
DEPARTMENT

**KEYPLAN  
MARCH ROAD  
AT  
STREET 1 (KANATA NORTH  
URBAN EXPANSION AREA)**

Transportation Engineering Services

Approved By:	XXXX
Completed By:	NOVATECH
Scale:	Date:
N.T.S.	MAY 2019

Drawing No.:  
  
**RMA-2019  
-TES-????**



**LEGEND:**

	PROPOSED MULTI USE PATHWAY
	PROPOSED CONCRETE SIDEWALK
	AREA OF PROPOSED ROAD MODIFICATIONS

M:\2016\116132\CAD\Design\116132-FD.dwg, RMA-detail, May 10, 2019 - 2:31pm, rthiller



TRANSPORTATION SERVICES  
DEPARTMENT

**PROPOSED ROADWAY  
MODIFICATIONS**  
**MARCH ROAD  
AT  
STREET 1 (KANATA NORTH  
URBAN EXPANSION AREA)**

Transportation Engineering Services

Approved By:		XXXX
Completed By:		NOVATECH
Scale:	Date:	
N.T.S.	MAY 2019	

Drawing No.:  
  
**RMA-2019  
-TES-???**