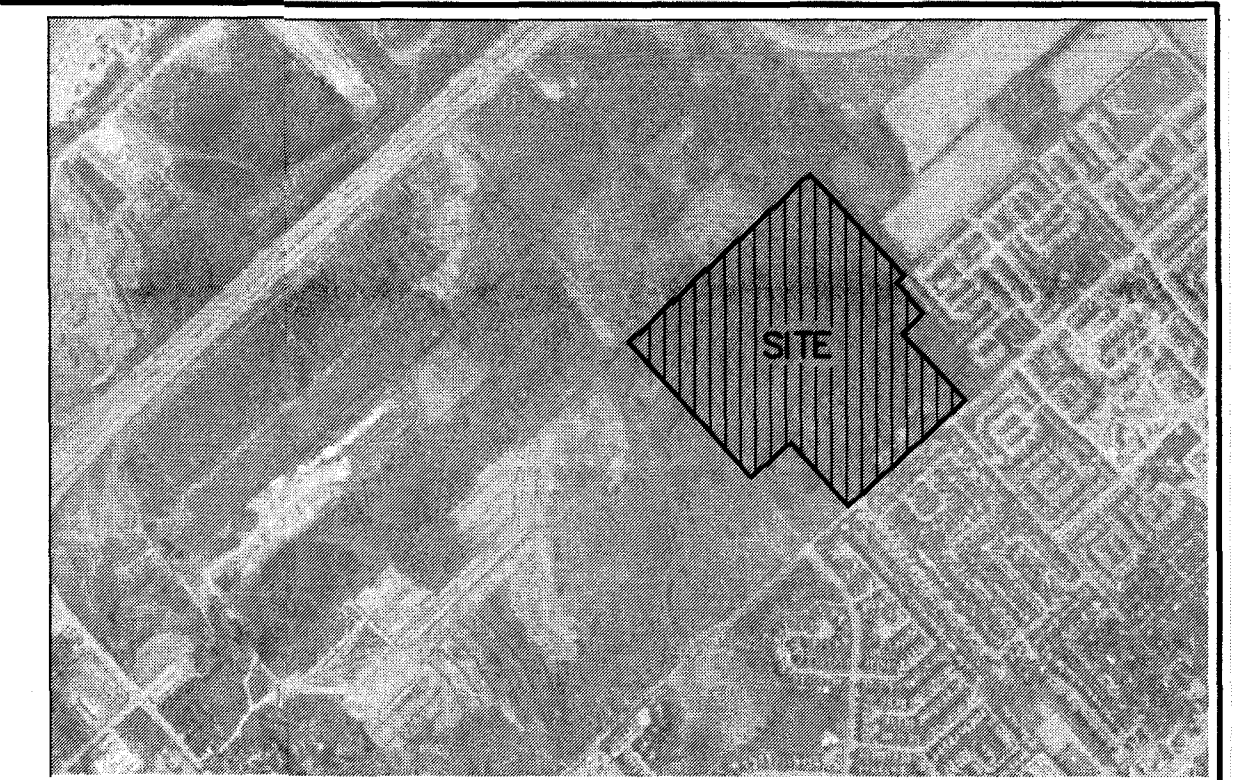
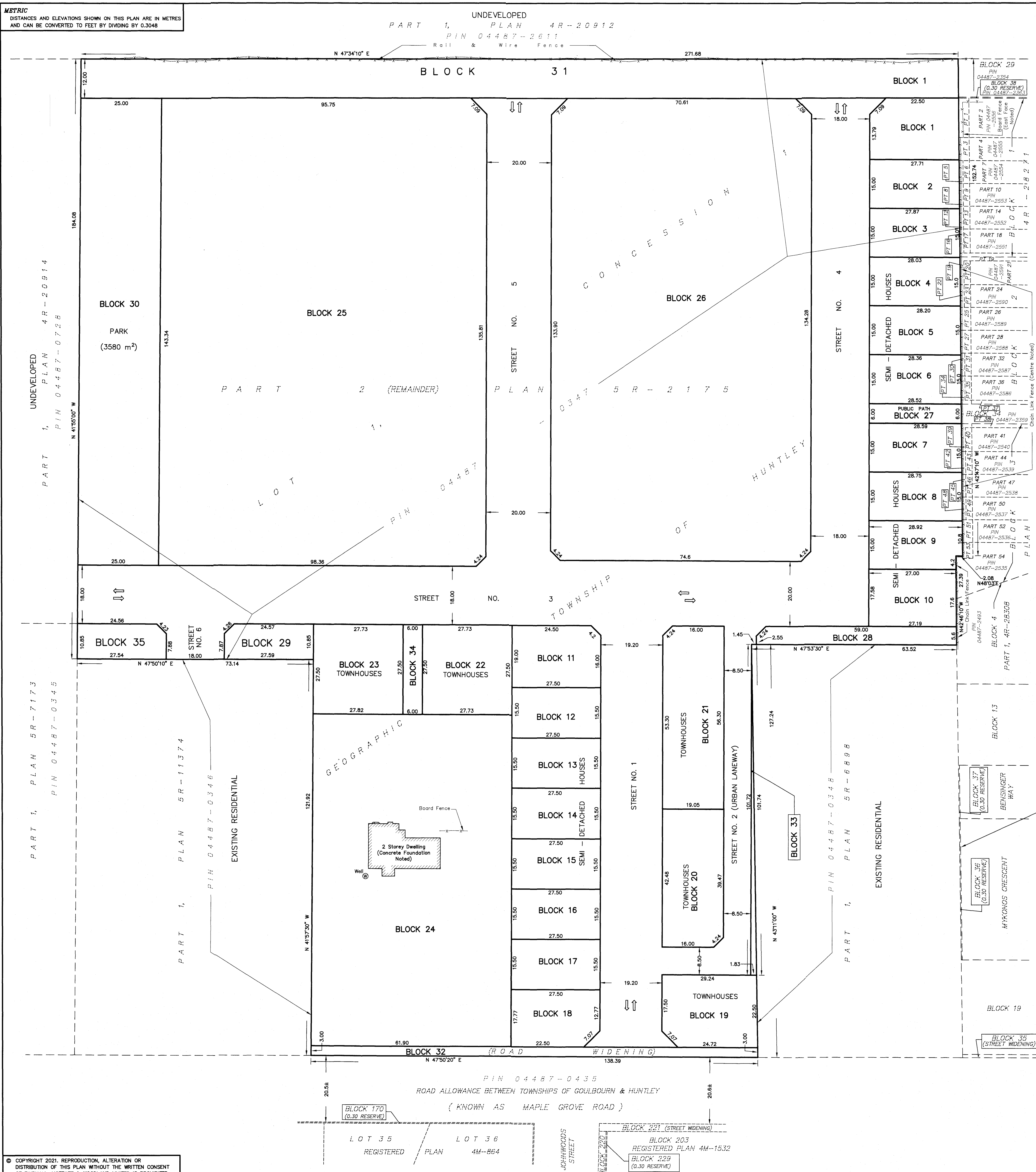
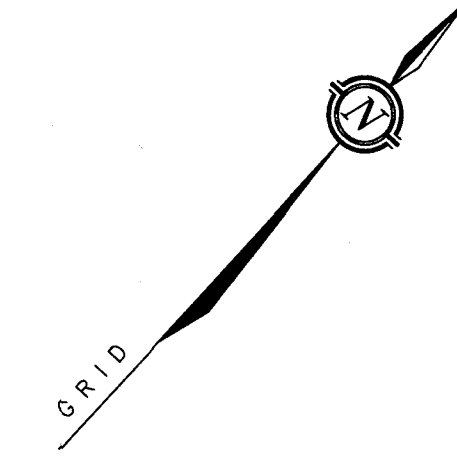


METRIC
DISTANCES AND ELEVATIONS SHOWN ON THIS PLAN ARE IN METRES
AND CAN BE CONVERTED TO FEET BY DIVIDING BY 0.3048

UNDEVELOPED
PART 1, PLAN 4R-20912
PIN 04487-2611
Rail & Wire Fence



KEY PLAN - NOT TO SCALE



EXISTING RESIDENTIAL
4 M - 1 5 0 5
EXISTING RESIDENTIAL
P L A N
R E G I S T E R E D

**DRAFT PLAN OF SUBDIVISION OF
PART OF LOT 1
CONCESSION 1
GEOGRAPHIC TOWNSHIP OF HUNTLEY
CITY OF OTTAWA**

SCALE 1 : 500
0 10 20 30 40 50 metres
FAIRHALL, MOFFATT & WOODLAND LIMITED
ONTARIO LAND SURVEYORS

SUBJECT TO THE CONDITIONS, IF ANY, SET FORTH IN
OUR LETTER DATED _____ 20____ THIS DRAFT
PLAN IS APPROVED BY THE CITY OF OTTAWA UNDER
SECTION 50 OF THE CONDOMINIUM ACT AND SECTION 51
OF THE PLANNING ACT.
THIS _____ DAY OF _____ 2021.

DERRICK MOODIE, MANAGER
DEVELOPMENT REVIEW, SUBURBAN SERVICES
PLANNING, INFRASTRUCTURE AND ECONOMIC DEVELOPMENT
DEPARTMENT, CITY OF OTTAWA

OWNER'S AUTHORIZATION
I HEREBY AUTHORIZE THE SUBMISSION OF THIS PLAN FOR
APPROVAL.

2021/09/09
DATE

VINCENT LI

SURVEYOR'S CERTIFICATE
I HEREBY CERTIFY THAT THE BOUNDARIES OF THE LANDS TO BE
SUBDIVIDED AS SHOWN ON THIS PLAN AND THEIR RELATIONSHIP
TO ADJOINING LANDS ARE ACCURATELY AND CORRECTLY SHOWN.

2021/09/09
DATE

JOHN H. GUTRI
ONTARIO LAND SURVEYOR

- SECTION 51 (17) OF THE PLANNING ACT.**
- a) SHOWN ON PLAN
 - b) SHOWN ON PLAN
 - c) SHOWN ON PLAN
 - d) 6 APARTMENT BUILDINGS (4 STOREYS EACH)
5 TOWNHOUSE UNITS
36 SEMI-DETACHED UNITS
PARKLAND
 - e) SHOWN ON PLAN
 - f) SHOWN ON PLAN
 - g) SHOWN ON PROJECT SITE PLAN
 - h) WATER SUPPLY WILL BE FROM MUNICIPAL MAINS
 - i) SEE GEOTECHNICAL INVESTIGATION REPORT PG4507-1
BY PATERSONGROUP DATED JULY 20, 2018.
 - j) SHOWN ON PLAN
 - k) WATER SUPPLY, STORM AND SANITARY SEWERS, FIRE
PROTECTION, POLICING, BUS SERVICE AND GARBAGE COLLECTION
ARE AVAILABLE.
 - l) NONE

SITE AREA = 6.675 Ha.

© COPYRIGHT 2021. REPRODUCTION, ALTERATION OR
DISTRIBUTION OF THIS PLAN WITHOUT THE WRITTEN CONSENT
OF FAIRHALL, MOFFATT & WOODLAND LIMITED IS PROHIBITED.

**Fairhall
Moffatt &
Woodland**
LIMITED
OTTAWA
Ontario Land Surveyors
Surveying and Land Information Services
100-200 TERRACE FOR DRIVE, KANATA, ONTARIO K2K 4H6
TEL: (613) 591-2580 FAX: (613) 591-1485
www.fairhall.com

JOB No.
W 4 0 2 0 1
E 349447, N 5016212
REFERENCE No.
74 (b) - 1 HUNTLEY
S:\085\W40201\DWG\dp402w_7sep2021.dwg