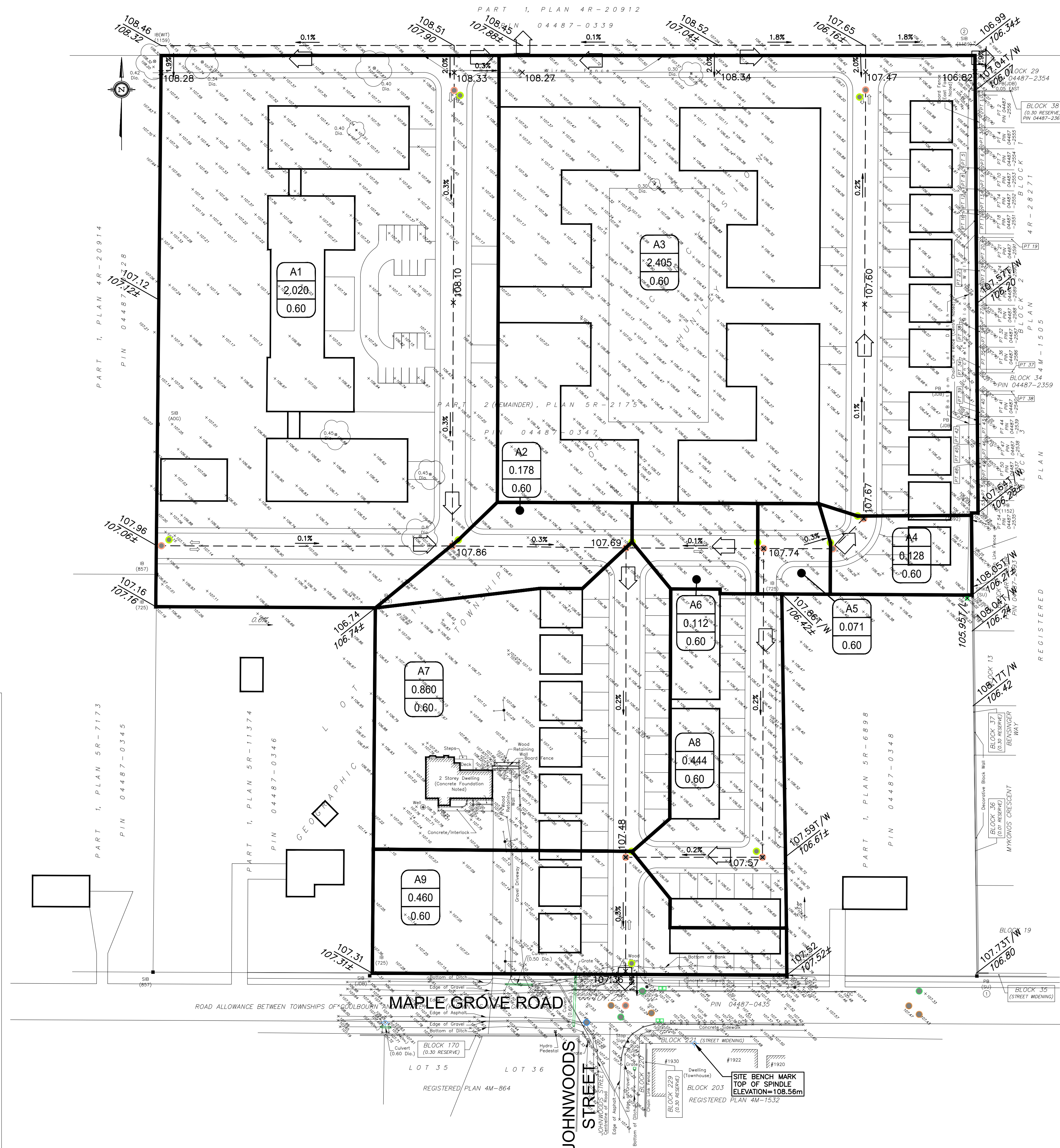


LEGEND:

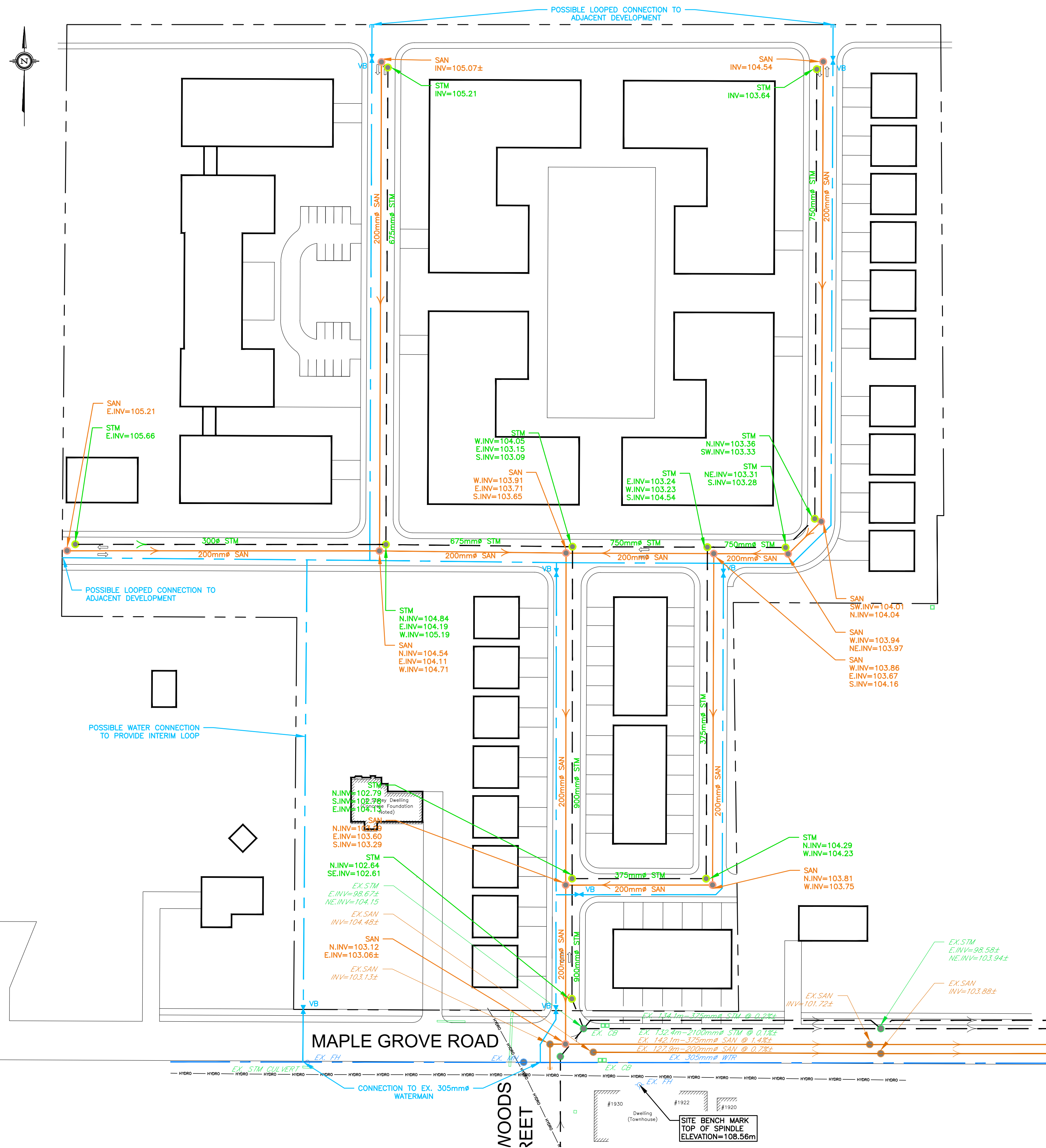
- $\times 100.00$ EXISTING SPOT ELEVATION
- $\times 100.00$ PROPOSED SPOT ELEVATION
- $\xrightarrow{1.0\%}$ EXISTING GRADE AND DIRECTION
- $\xrightarrow{1.0\%}$ PROPOSED GRADE AND DIRECTION
- $\frac{100.00}{100.00}$ PROPOSED/EXISTING SPOT ELEVATION
- \Rightarrow MAJOR SYSTEM FLOW ROUTE
- $---$ EXISTING STORM SEWER
- $---$ FUTURE STORM SEWER
- $---$ DRAINAGE DIVIDE
- EX6
4.010
0.19
- STORM DRAINAGE AREA



DSEL
 david schaeffer engineering ltd
 SMART SUBDIVISIONS™
 120 Iber Road Unit 103
 Stittsville, Ontario, K2S 1E9
 Tel. (613) 836-0856
 Fax. (613) 836-7183
 www.DSEL.ca

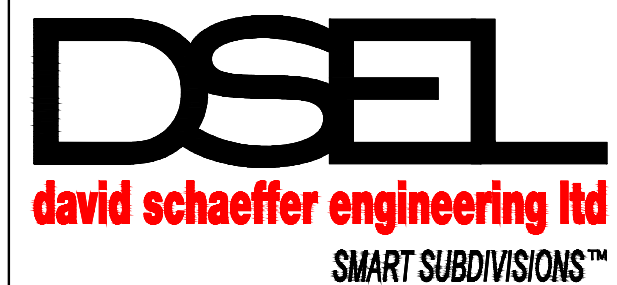
CONCEPTUAL GRADING & DRAINAGE PLAN
1919 MAPLE GROVE ROAD

PROJ NO.: 16-861
 DRAWN BY: AJG
 DATE: 2019-08-14
 SCALE: 1:750
 FIGURE NO.: GDP-1



LEGEND:

- EXISTING WATERMAIN
- EXISTING SANITARY SEWER
- EXISTING STORM SEWER
- FUTURE WATERMAIN
- FUTURE SANITARY SEWER
- FUTURE STORM SEWER



120 Iber Road Unit 103
 Stittsville, Ontario, K2S 1E9
 Tel. (613) 836-0856
 Fax. (613) 836-7183
 www.DSEL.ca

**CONCEPTUAL SITE SERVICING PLAN
 1919 MAPLE GROVE ROAD**

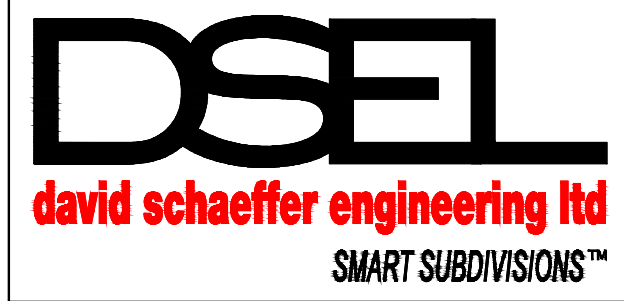
PROJ NO.:	16-861
DRAWN BY:	AJG
DATE:	2019-08-14
SCALE:	1:750
FIGURE NO.:	SSP-1



LEGEND:

- EXISTING STORM SEWER
- FUTURE STORM SEWER

EX6	STORM DRAINAGE AREA
4.010	
0.19	



120 Iber Road Unit 103
 Stittsville, Ontario, K2S 1E9
 Tel. (613) 836-0856
 Fax. (613) 836-7183
 www.DSEL.ca

CONCEPTUAL STORMWATER DRAINAGE PLAN

1919 MAPLE GROVE ROAD

PROJ NO.:	16-861
DRAWN BY:	AJG
DATE:	2019-08-14
SCALE:	1:750
FIGURE NO.:	SWM-1

z:\projects\16-861_formasiam-1919_maple_grove\b_design\b2_drawings\b2-2_main (dsel)\oes_sub1\cod\2019-08-14_861_ajg.dwg