

THIS DRAFT PLAN IS VALID ONLY FOR THE CITY OF OTTAWA UNDER THE CITY OF OTTAWA ACT, R.S.O. 1990, CHAPTER O-2. IT IS NOT VALID FOR ANY OTHER JURISDICTION.

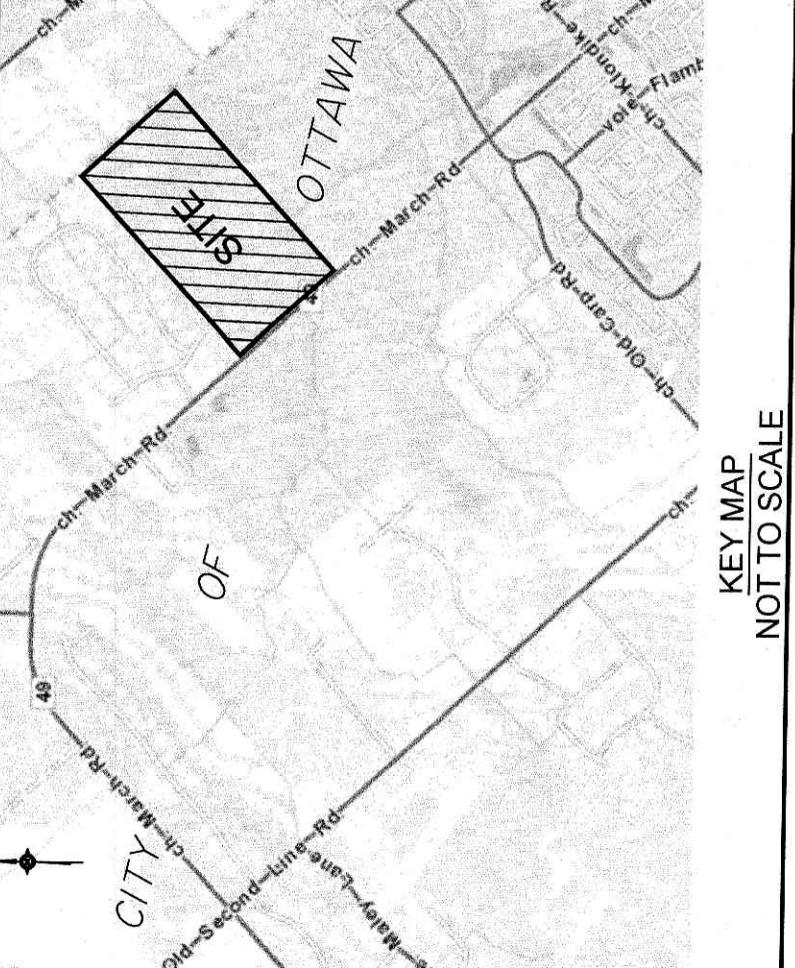
THIS DRAFT PLAN IS VALID ONLY FOR THE CITY OF OTTAWA UNDER THE CITY OF OTTAWA ACT, R.S.O. 1990, CHAPTER O-2. IT IS NOT VALID FOR ANY OTHER JURISDICTION.

THIS DRAFT PLAN IS VALID ONLY FOR THE CITY OF OTTAWA UNDER THE CITY OF OTTAWA ACT, R.S.O. 1990, CHAPTER O-2. IT IS NOT VALID FOR ANY OTHER JURISDICTION.

**DRAFT PLAN OF SUBDIVISION OF
PART OF LOT 13
CONCESSION 4
Geographic Township of March
CITY OF OTTAWA**

Prepared by Annis, O'Sullivan, Vollebek Ltd.
Scale 1:1000

NOTE:
DISTANCES SHOWN ON THIS PLAN ARE IN METRES AND
CAN BE CONVERTED TO FEET BY DIVIDING BY 0.3048



SURVEYOR'S CERTIFICATE

I CERTIFY THAT:
The boundaries of the lands to be subdivided and their relationship to adjoining lands have been accurately and correctly shown.

Annex 101
ANNEX 101
ON-THE-SPOT SURVEYOR

OWNER'S CERTIFICATE

This is to certify that we are the owners of the lands to be subdivided and that this plan was prepared in accordance with our instructions.

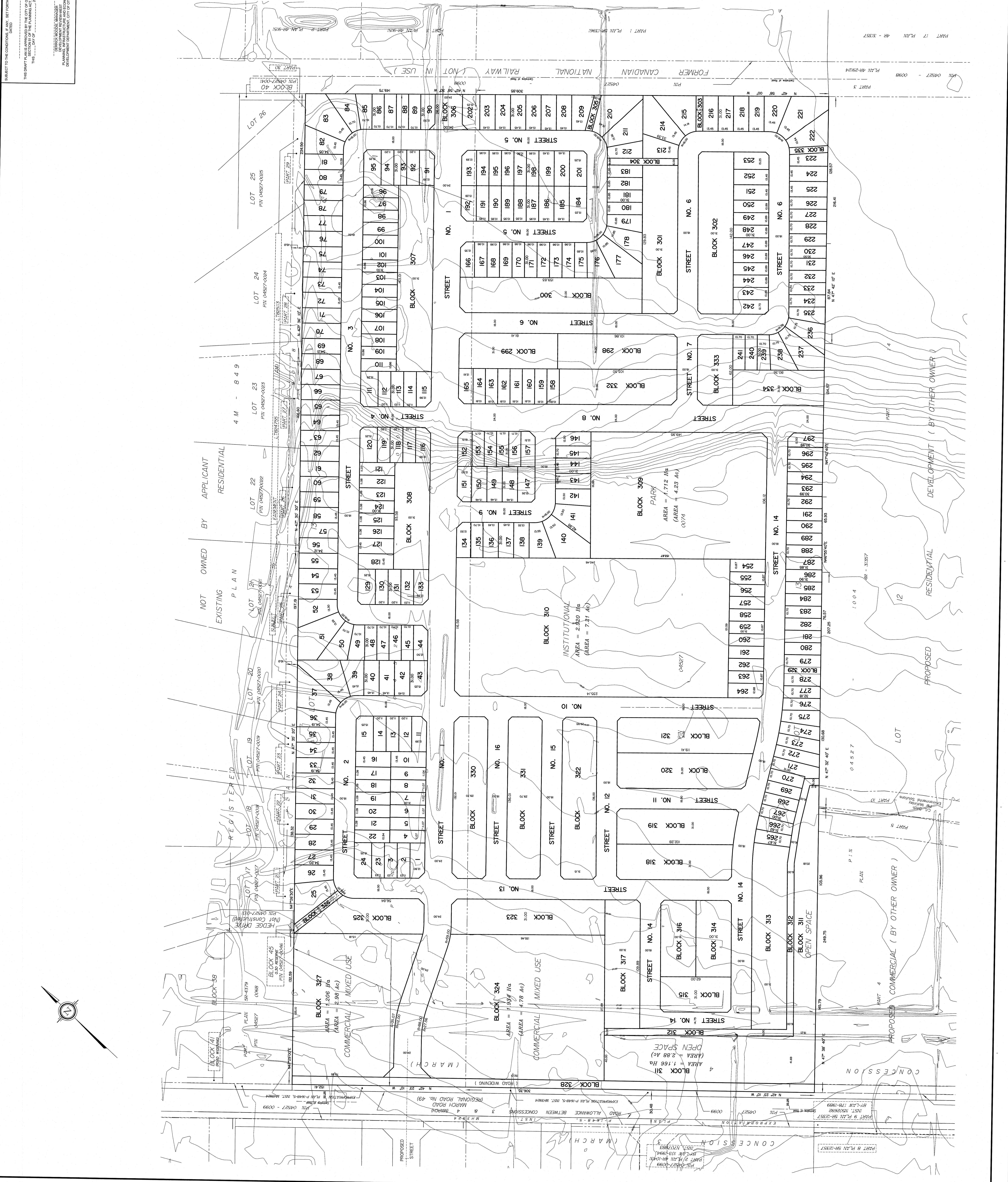
Date: _____
Denny Page, Manager of Planning
I have the authority to bind the corporation.

ADDITIONAL INFORMATION REQUIRED UNDER SECTION 51-17 OF THE PLANNING ACT

- (a) see plan
- (b) see plan
- (c) see plan
- (d) see plan
- (e) see plan
- (f) see plan
- (g) see plan
- (h) see plan
- (i) see plan
- (j) see plan
- (k) see plan
- (l) see plan
- (m) see plan
- (n) see plan
- (o) see plan
- (p) see plan
- (q) see plan
- (r) see plan
- (s) see plan
- (t) see plan
- (u) see plan
- (v) see plan
- (w) see plan
- (x) see plan
- (y) see plan
- (z) see plan

NO.	REVISION	SCHEDULE	DATE	BY
1				
2				
3				
4				
5				
6				
7				

ANNIS, O'SULLIVAN, VOLLEBEK LTD.
Professional Corporation
1000 Avenue Road, Suite 1000
Ottawa, Ontario K1R 7Y9
Phone: (613) 737-7700
Fax: (613) 737-7701
www.anniso.com



NOT OWNED BY APPLICANT
EXISTING
RESIDENTIAL
PLAN
4 M - 8 4 9

REGISTERED
LOT 19
LOT 20
LOT 21
LOT 22
LOT 23
LOT 24
LOT 25
LOT 26

CONCESSION
COMMERCIAL (BY OTHER OWNER)
PROPOSED
RESIDENTIAL
DEVELOPMENT (BY OTHER OWNER)

INSTITUTIONAL
AREA = 2,920 Ha
(AREA = 7.21 Ac)

PARK
AREA = 1,712 Ha
(AREA = 4.23 Ac)

COMMERCIAL MIXED USE
AREA = 1,206 Ha
(AREA = 2.98 Ac)

COMMERCIAL MIXED USE
AREA = 1,594 Ha
(AREA = 4.78 Ac)

OPEN SPACE
AREA = 2.88 Ha
(AREA = 1.66 Ac)