

Copyright Reserved

The Contractor shall verify and be responsible for all dimensions. DO NOT scale the drawings - any errors or omissions shall be reported to Stantec without delay.
The Copyrights to all designs and drawings are the property of Stantec. Reproduction or use for any purpose other than that authorized by Stantec is forbidden.

Legend

- PROPOSED TRUNK STORM SEWER
- EXISTING TRUNK STORM SEWER
- FUTURE TRUNK STORM SEWER
- MAJOR OVERLAND FLOW ROUTE
- DRAINAGE AREA NO.
- RUNOFF COEFFICIENT
- STORM DRAINAGE AREA (ha)
- EXTERNAL AREA NO.
- EXTERNAL RUNOFF COEFFICIENT
- EXTERNAL STORM DRAINAGE AREA (ha)
- STORM DRAINAGE BOUNDARY
- EXTERNAL STORM DRAINAGE BOUNDARY
- EXISTING DITCH

Notes

- COMMERCIAL AND INSTITUTIONAL BLOCKS TO RESTRICT MINOR SYSTEM PEAK FLOWS TO THE YEAR RUNOFF AND TO PROVIDE ON-SITE STORAGE FOR UP TO 100-YEAR OVERFLOWS.
- SUBCATCHMENTS STARTING WITH THE PREFIX L CORRESPOND TO LOCAL STREETS, C FOR COLLECTOR ROADS (AND/OR AREAS WITH MAJOR FLOWS TO COLLECTOR ROADS) AND A FOR ARTERIAL ROADS.
- AREAS A211A AND A211B CORRESPOND TO FUTURE URBANIZED MARCH ROAD BY OTHERS.

Revision	By	Appd.	YY.MM.DD
1	AJ	AMP	19.07.31

File Name:	AJ	KS	DT	19.07.05
Permit-Seal	Dwn.	Chkd.	Dgn.	YY.MM.DD

Client/Project
VALECRAFT HOMES

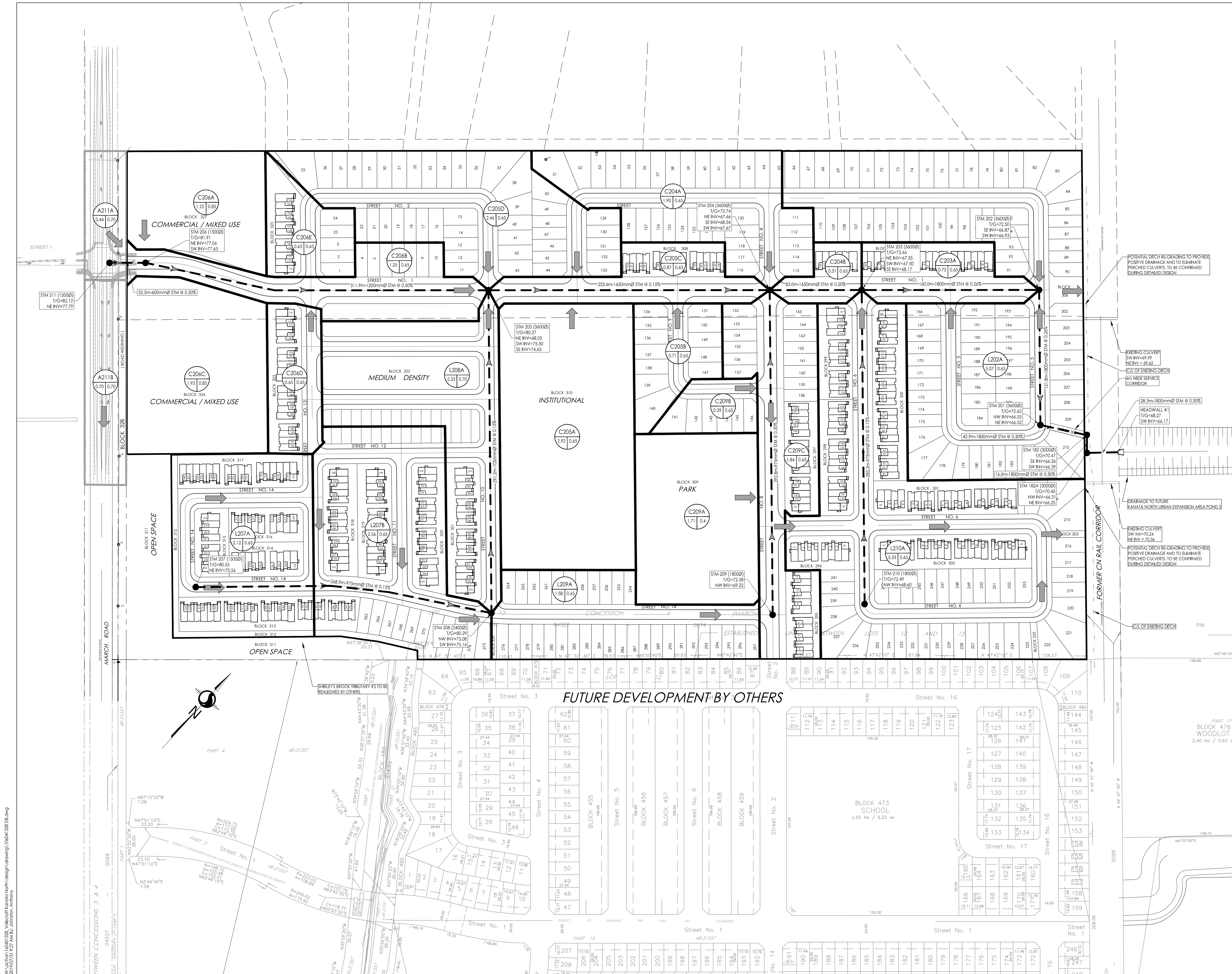
PART OF LOT 13 CONCESSION 4
DRAFT PLAN OF SUBDIVISION
OTTAWA, ON

Title
PRELIMINARY OVERALL
STORM SEWER SYSTEM

Project No. 160401328 Scale 0 15 45 75m
1:1500

Drawing No. Sheet Revision

STM-1 1 of 5 1



W:\active\160401328_Valecraft\kanata\storm\design\drawing\160401328.Dwg
2019/07/31 12:57 AM by J. J. J. J.

ORIGINAL SHEET - ARCH D