

LEGEND

- SITE BOUNDARY
- EXISTING WATERMAIN
- PROPOSED 150mm LOCAL WATERMAIN
- PROPOSED 200mm LOCAL WATERMAIN
- PROPOSED 250mm LOCAL WATERMAIN
- PROPOSED 300mm LOCAL WATERMAIN



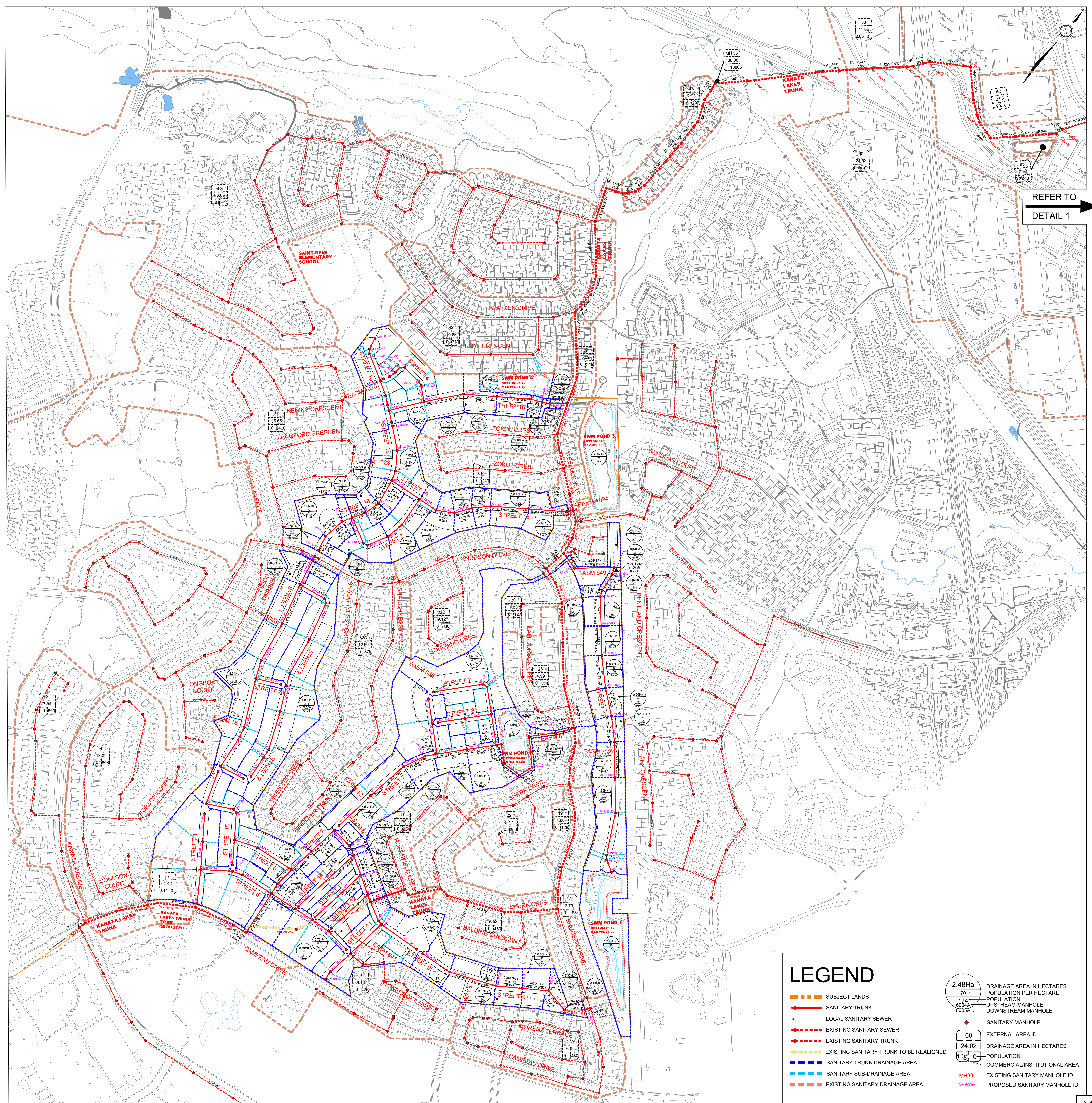
120 Iber Road, Unit 103
 Stittsville, Ontario, K2S 1E9
 Tel. (613) 836-0856
 Fax. (613) 836-7183
 www.DSEL.ca

7000 CAMPEAU DRIVE
 CITY OF OTTAWA

WATERMAIN SERVICING PLAN

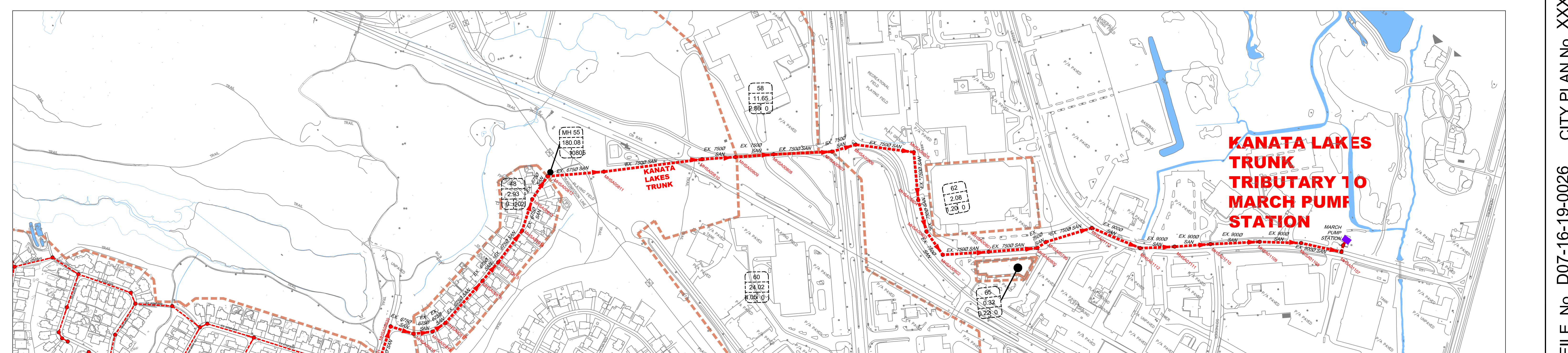
SCALE:	1:2000	PROJECT No.:	1061
DATE:	JUNE 2021	DRAWING No.:	01D

CITY FILE No. D07-16-19-0026 CITY PLAN No. XXXXX



REFER TO
DETAIL 1

LEGEND	
	SUBJECT LANDS
	SANITARY TRUNK
	LOCAL SANITARY SEWER
	EXISTING SANITARY SEWER
	EXISTING SANITARY TRUNK
	EXISTING SANITARY TRUNK TO BE REALIGNED
	SANITARY TRUNK DRAINAGE AREA
	SANITARY SUB-DRAINAGE AREA
	EXISTING SANITARY DRAINAGE AREA
	2.48Ha DRAINAGE AREA IN HECTARES
	70 POPULATION PER HECTARE
	174 POPULATION
	6005A UPSTREAM MANHOLE
	6005A DOWNSTREAM MANHOLE
	SANITARY MANHOLE
	60 EXTERNAL AREA ID
	24.02 DRAINAGE AREA IN HECTARES
	4.05 POPULATION
	MH30 COMMERCIAL/INSTITUTIONAL AREA
	MH30 EXISTING SANITARY MANHOLE ID
	MH30 PROPOSED SANITARY MANHOLE ID



DETAIL 1

CITY FILE No. D07-16-19-0026 CITY PLAN No. XXXXX

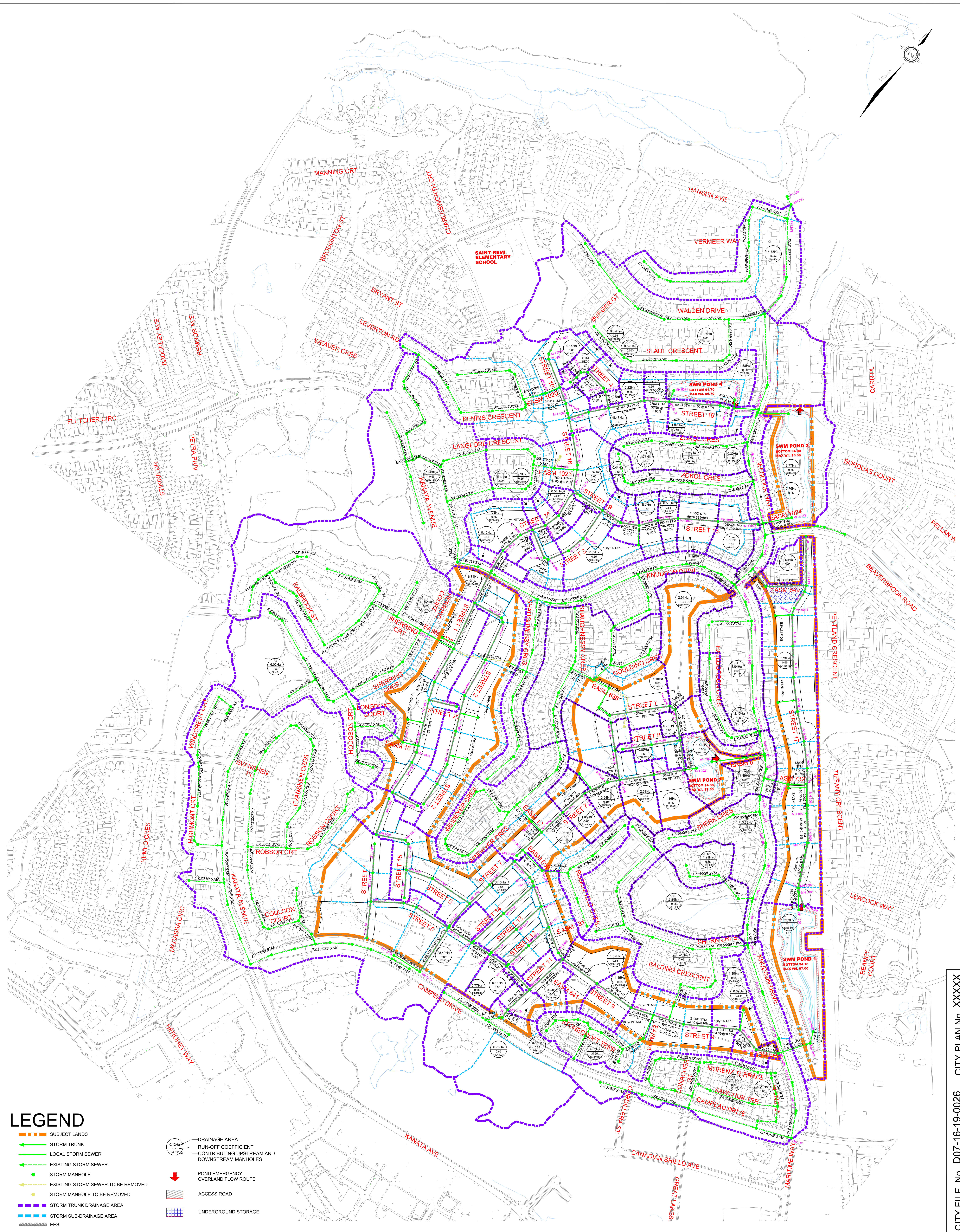
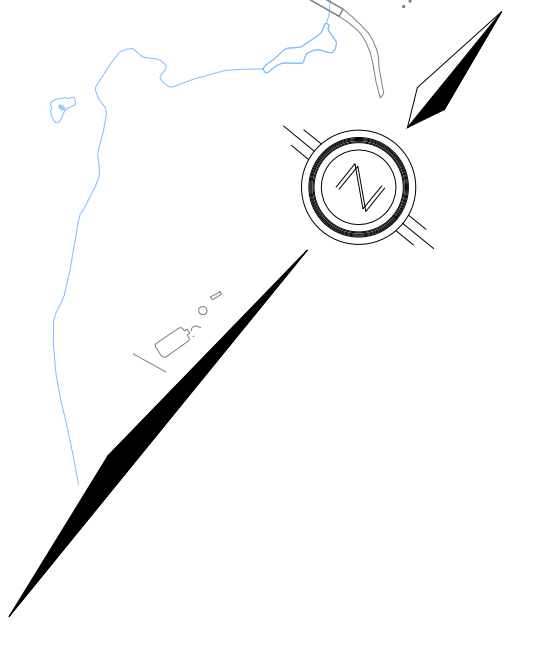


120 Iber Road, Unit 103
Stittsville, Ontario, K2S 1E9
Tel. (613) 836-0856
Fax. (613) 836-7183
www.DSEL.ca

7000 CAMPEAU DRIVE
CITY OF OTTAWA

SANITARY SERVICING AND DRAINAGE PLAN

SCALE:	1:3000	PROJECT No.:	1061
DATE:	JUNE 2021	DRAWING No.:	02D



LEGEND

- SUBJECT LANDS
- STORM TRUNK
- LOCAL STORM SEWER
- EXISTING STORM SEWER
- STORM MANHOLE
- EXISTING STORM SEWER TO BE REMOVED
- STORM MANHOLE TO BE REMOVED
- STORM TRUNK DRAINAGE AREA
- STORM SUB-DRAINAGE AREA
- EES
- DRAINAGE AREA RUNOFF COEFFICIENT CONTRIBUTING UPSTREAM AND DOWNSTREAM MANHOLES
- POND EMERGENCY OVERLAND FLOW ROUTE
- ACCESS ROAD
- UNDERGROUND STORAGE

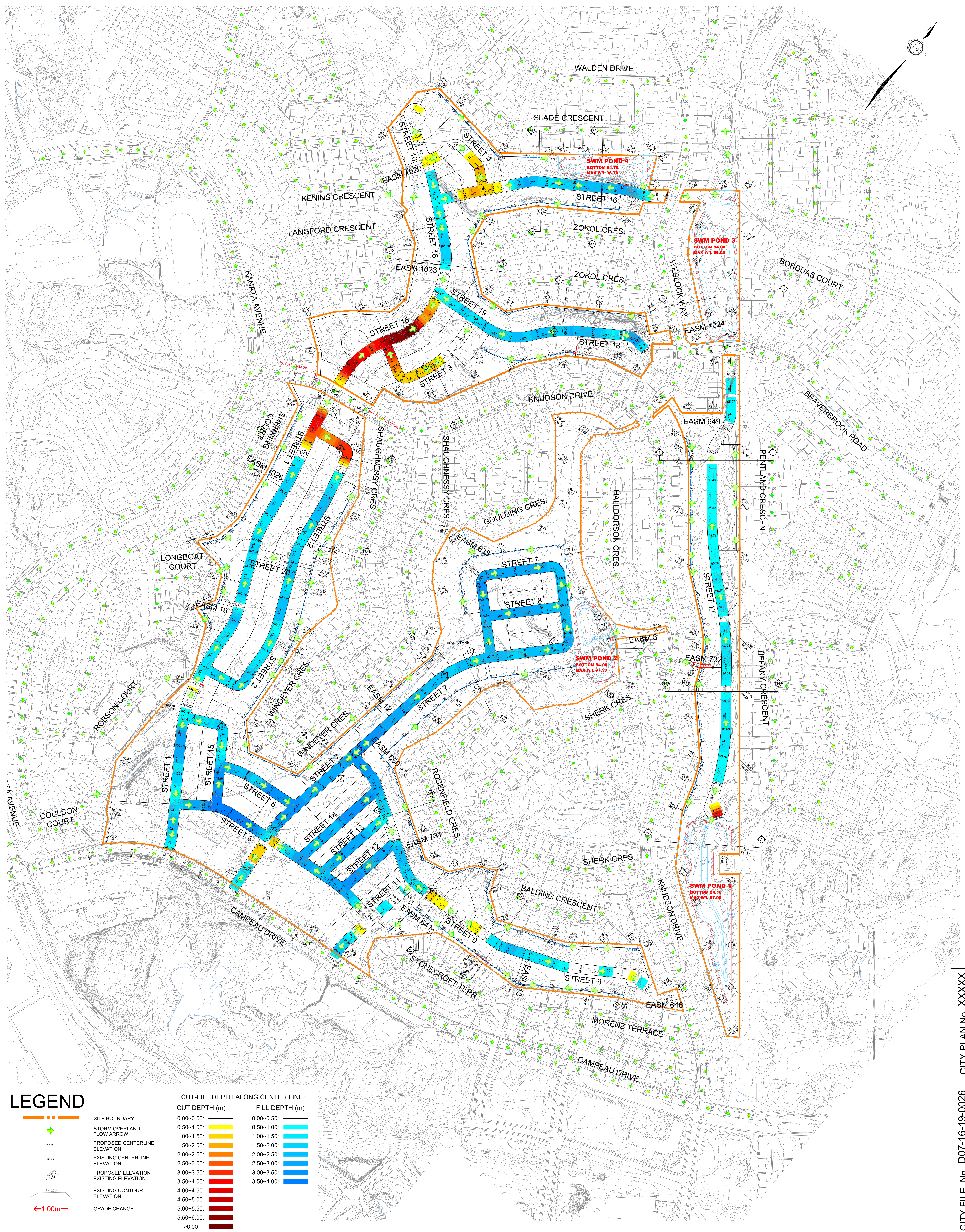


120 Iber Road, Unit 103
 Stittsville, Ontario, K2S 1E9
 Tel. (613) 836-0856
 Fax. (613) 836-7183
 www.DSEL.ca

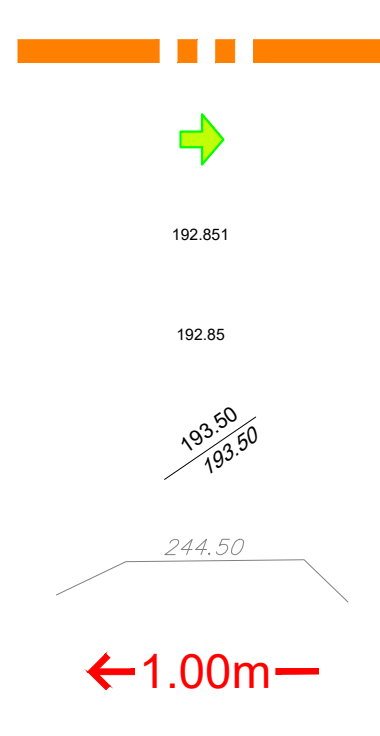
7000 CAMPEAU DRIVE
CITY OF OTTAWA

STORM SERVICING AND DRAINAGE PLAN

SCALE:	1:2500	PROJECT No.:	1061
DATE:	JUNE 2021	DRAWING No.:	03D



LEGEND



- SITE BOUNDARY
- STORM OVERLAND FLOW ARROW
- PROPOSED CENTERLINE ELEVATION
- EXISTING CENTERLINE ELEVATION
- PROPOSED ELEVATION
- EXISTING ELEVATION
- EXISTING CONTOUR ELEVATION
- ←1.00m→ GRADE CHANGE

CUT-FILL DEPTH ALONG CENTER LINE:	
CUT DEPTH (m)	FILL DEPTH (m)
0.00-0.50: [Black line]	0.00-0.50: [Black line]
0.50-1.00: [Yellow line]	0.50-1.00: [Cyan line]
1.00-1.50: [Orange line]	1.00-1.50: [Light blue line]
1.50-2.00: [Red-orange line]	1.50-2.00: [Blue line]
2.00-2.50: [Red line]	2.00-2.50: [Dark blue line]
2.50-3.00: [Dark red line]	2.50-3.00: [Very dark blue line]
3.00-3.50: [Black line]	3.00-3.50: [Black line]
3.50-4.00: [Black line]	3.50-4.00: [Black line]
4.00-4.50: [Black line]	
4.50-5.00: [Black line]	
5.00-5.50: [Black line]	
5.50-6.00: [Black line]	
>6.00: [Black line]	



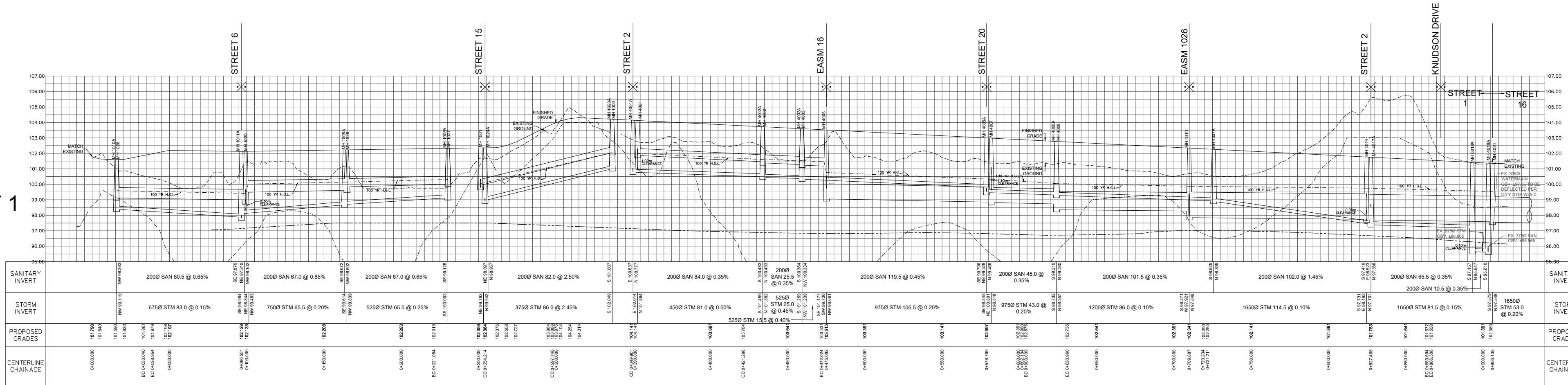
120 Iber Road, Unit 103
 Stittsville, Ontario, K2S 1E9
 Tel. (613) 836-0856
 Fax. (613) 836-7183
 www.DSEL.ca

7000 CAMPEAU DRIVE
CITY OF OTTAWA

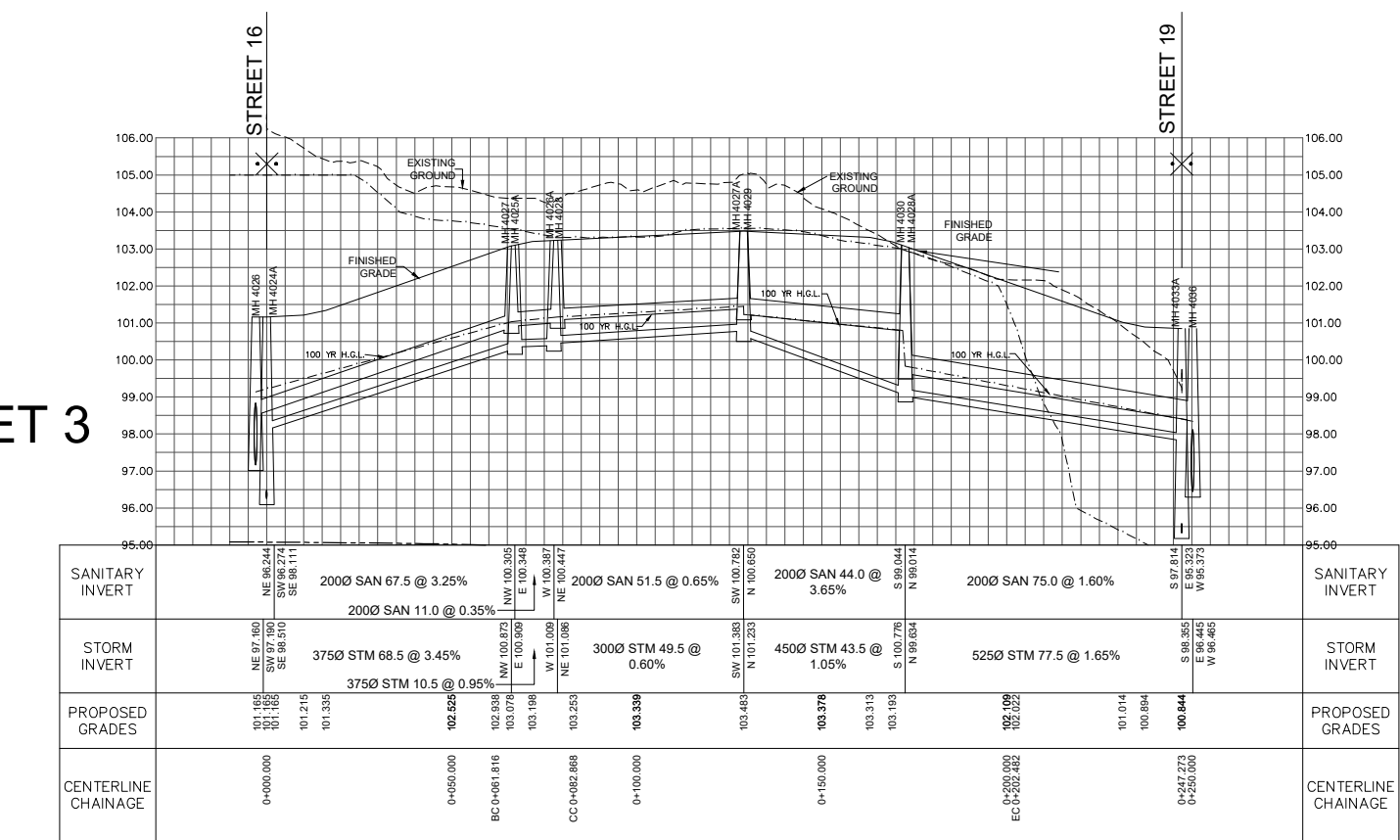
PRELIMINARY GRADING PLAN

SCALE:	1:2000	PROJECT No.:	1061
DATE:	JUNE 2021	DRAWING No.:	04D

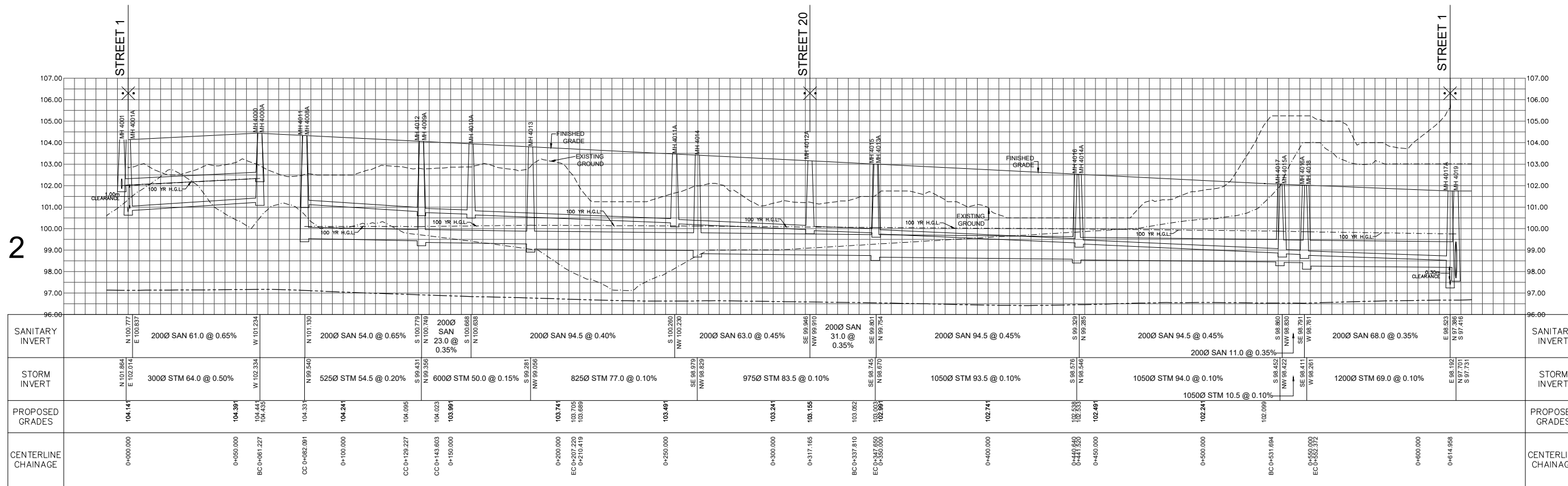
STREET 1



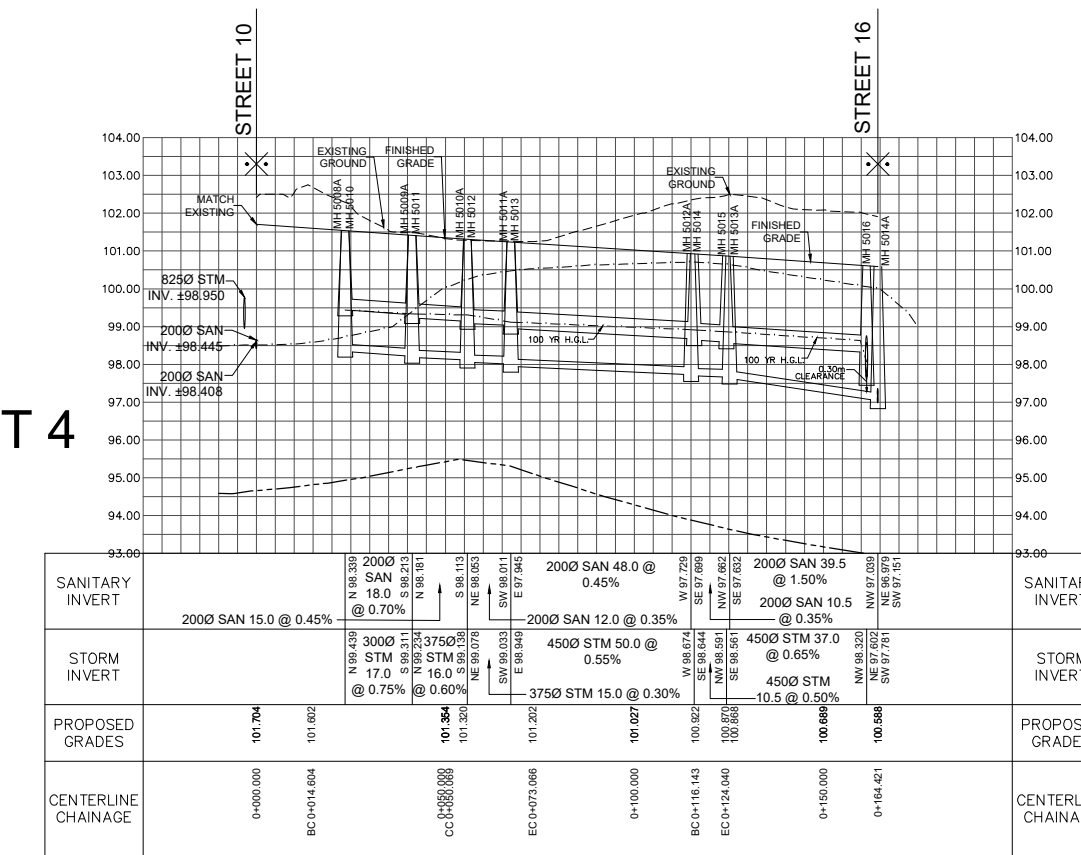
STREET 3



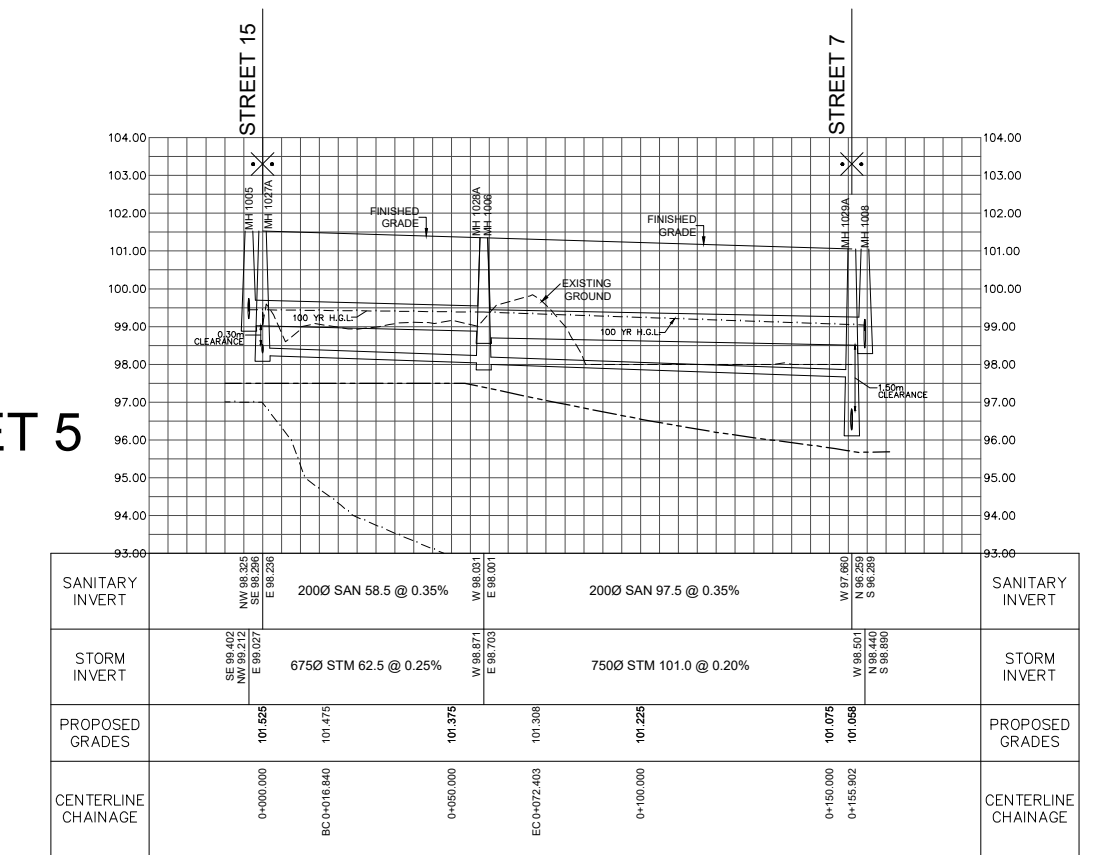
STREET 2



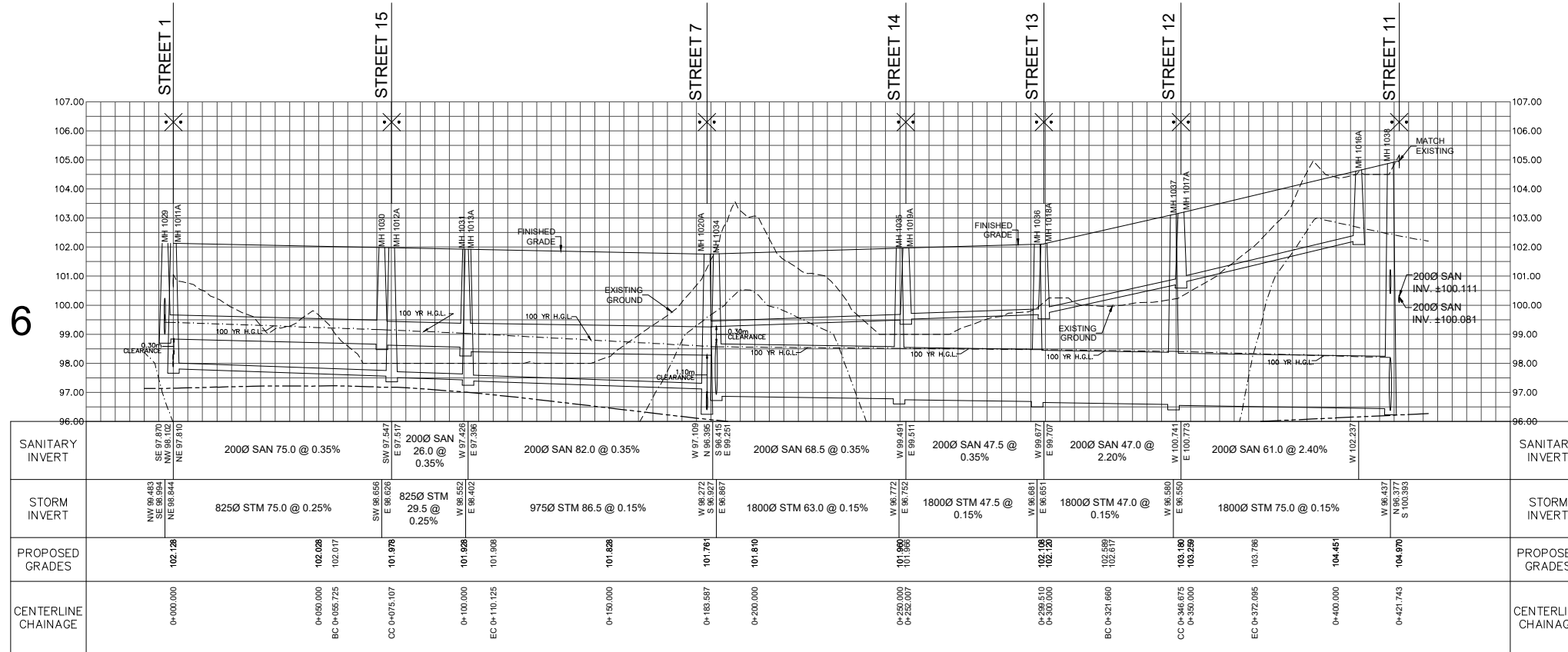
STREET 4



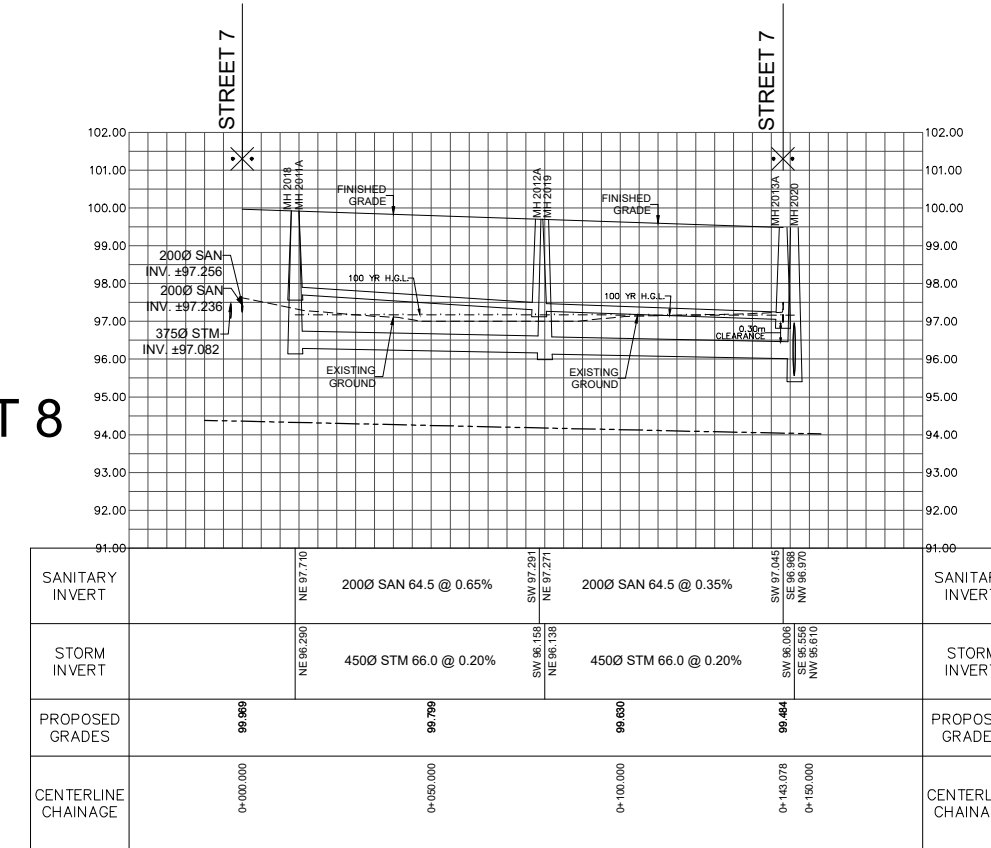
STREET 5



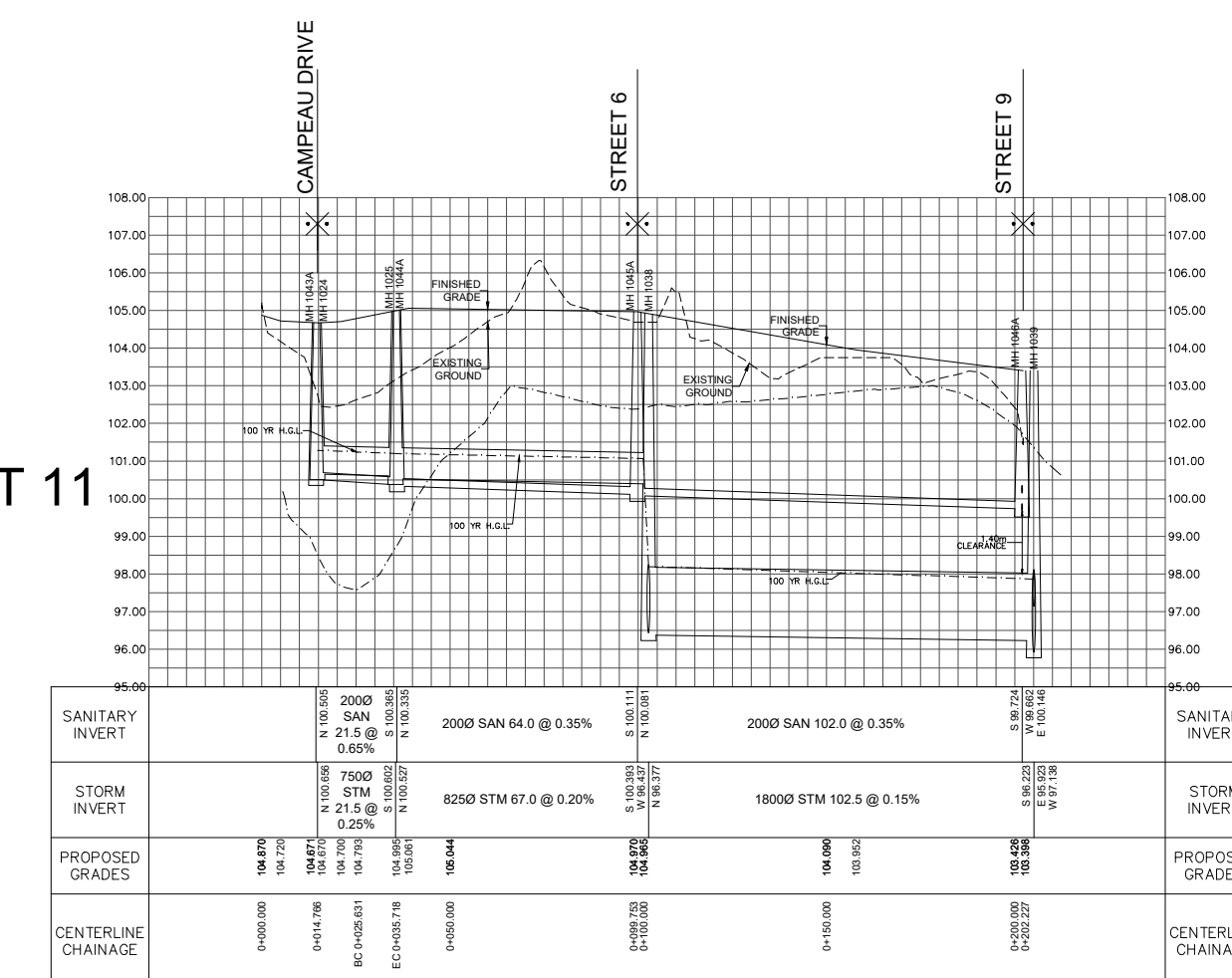
STREET 6



STREET 8



STREET 11



LEGEND

---	GROUNDWATER ELEVATION
---	BEDROCK ELEVATION
---	EXISTING GROUND
---	PROPOSED GROUND

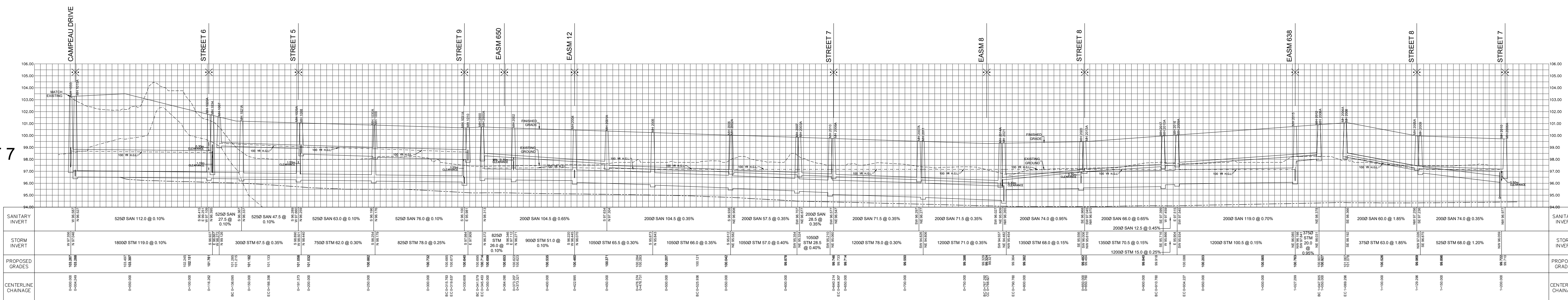
DSEL
david schaeffer engineering ltd
600 20th Floor, Suite 500
Bathurst, Ontario, K2B 0E9
Tel: (888) 826-3090
Fax: (888) 826-3983
www.DSEL.ca

7000 CAMPEAU DRIVE
CITY OF OTTAWA

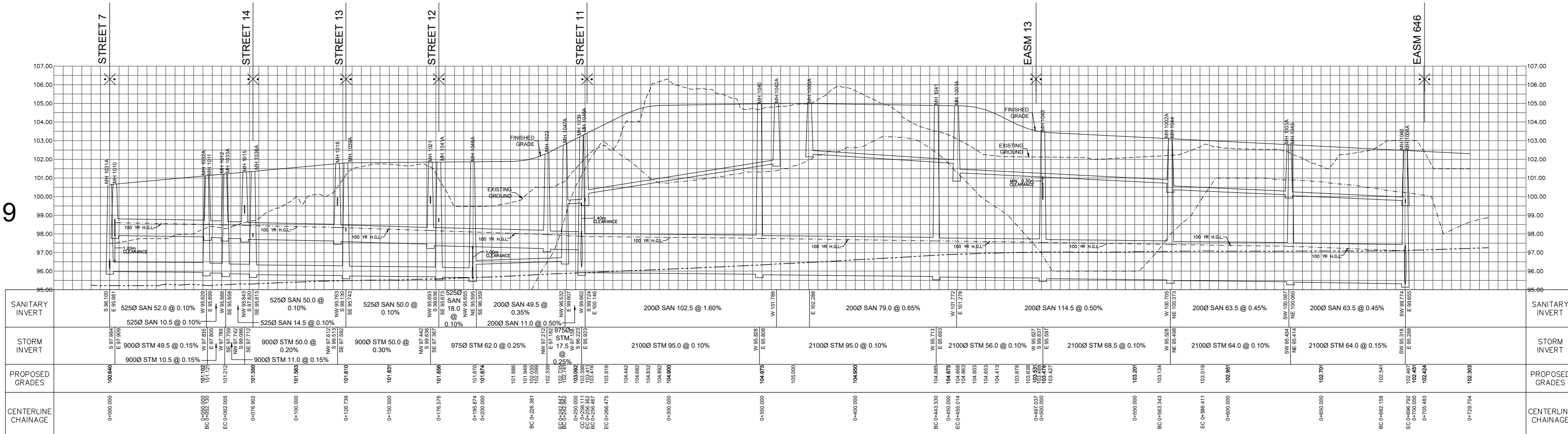
PROFILES

SCALE:	1:2000	PROJECT No.:	1061
DATE:	JUNE 2021	DRAWING:	05D

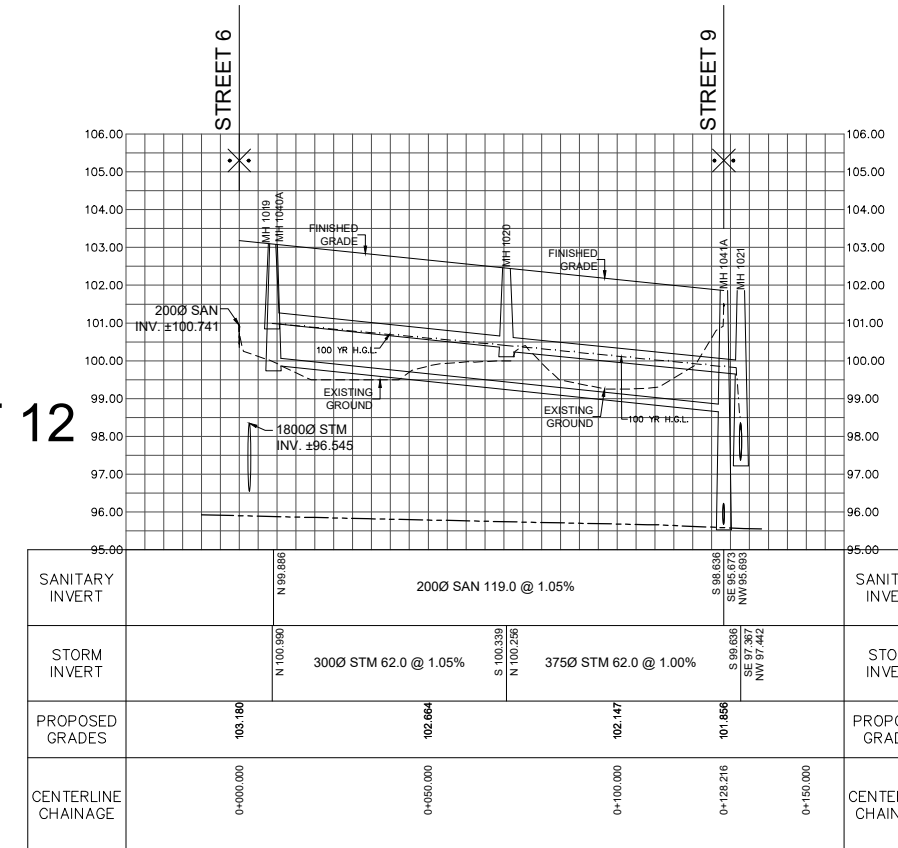
STREET 7



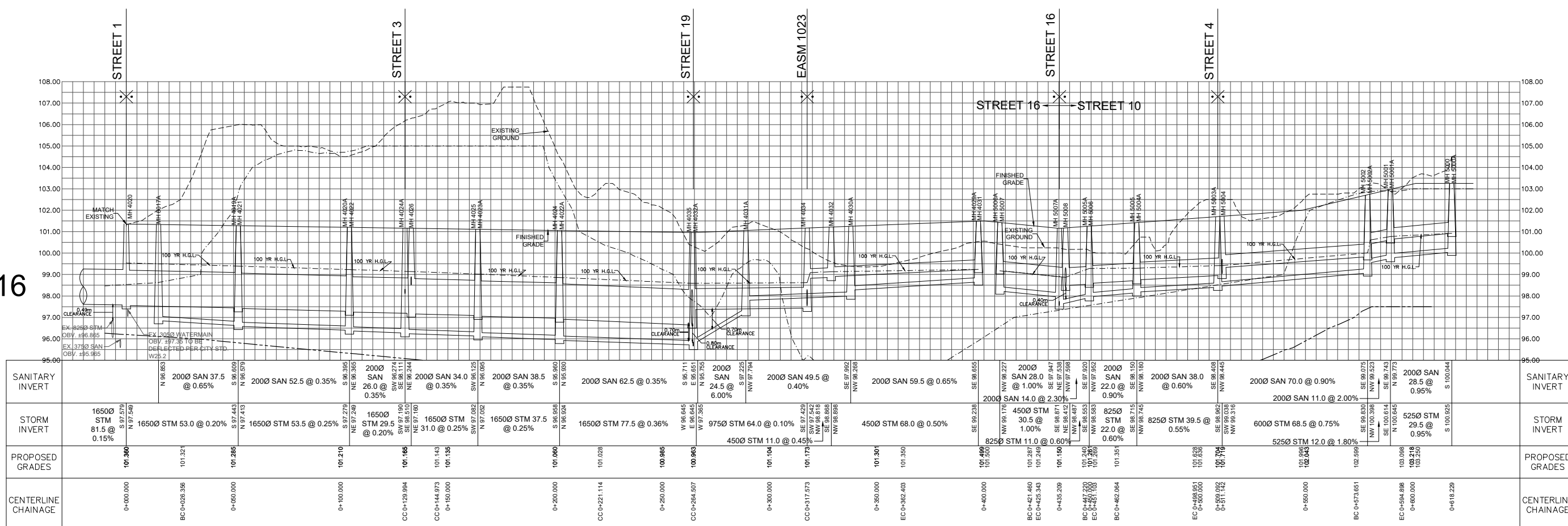
STREET 9



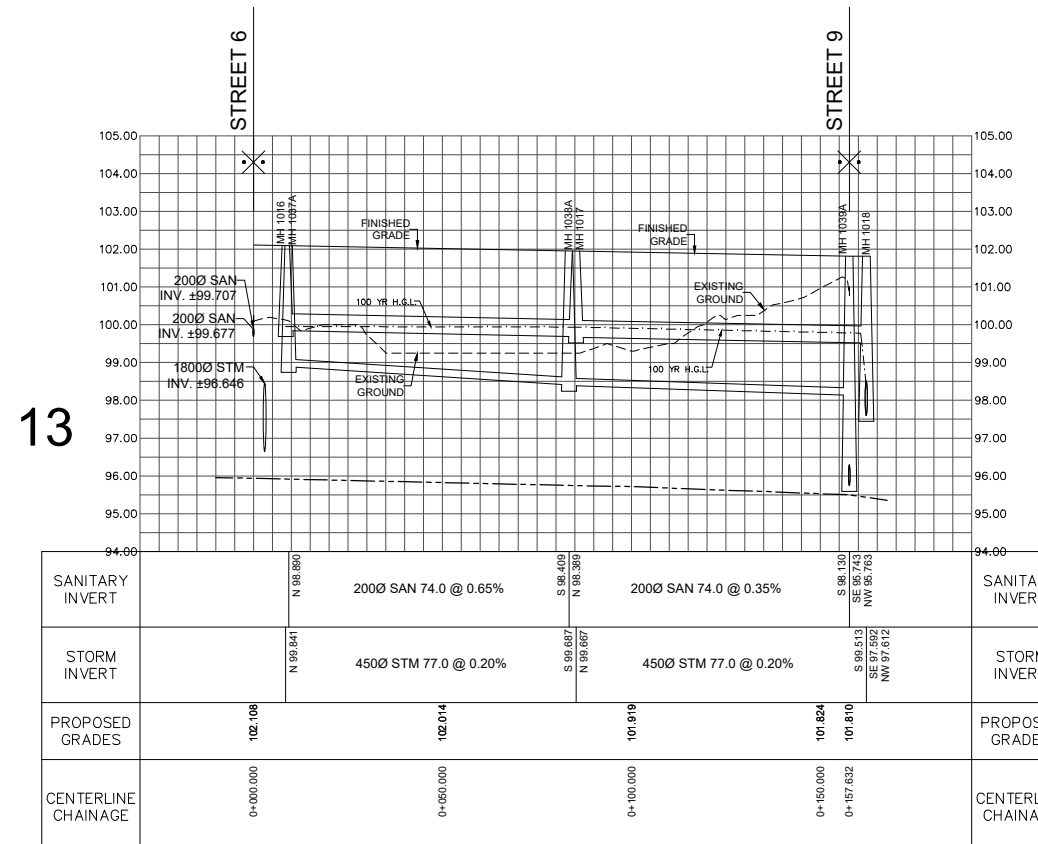
STREET 12



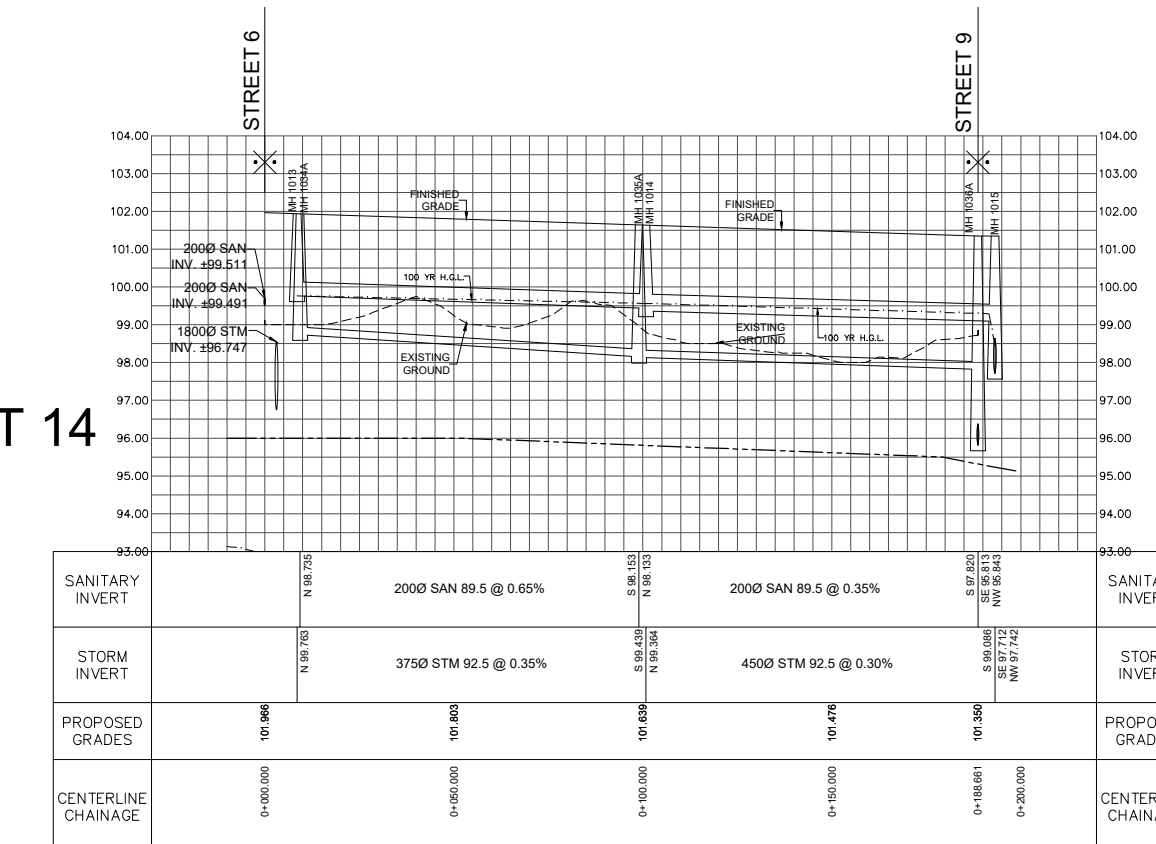
STREET 16



STREET 13



STREET 14



LEGEND

- GROUNDWATER ELEVATION
- - - BEDROCK ELEVATION
- - - EXISTING GROUND
- - - PROPOSED GROUND



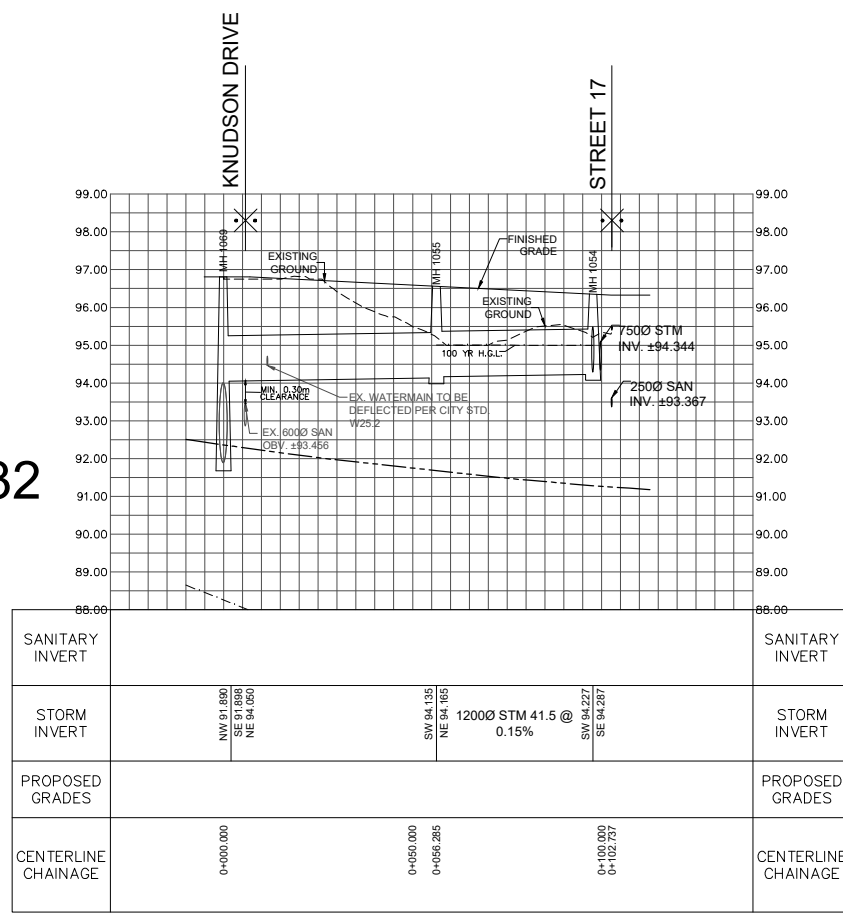
7000 CAMPEAU DRIVE

CITY OF OTTAWA

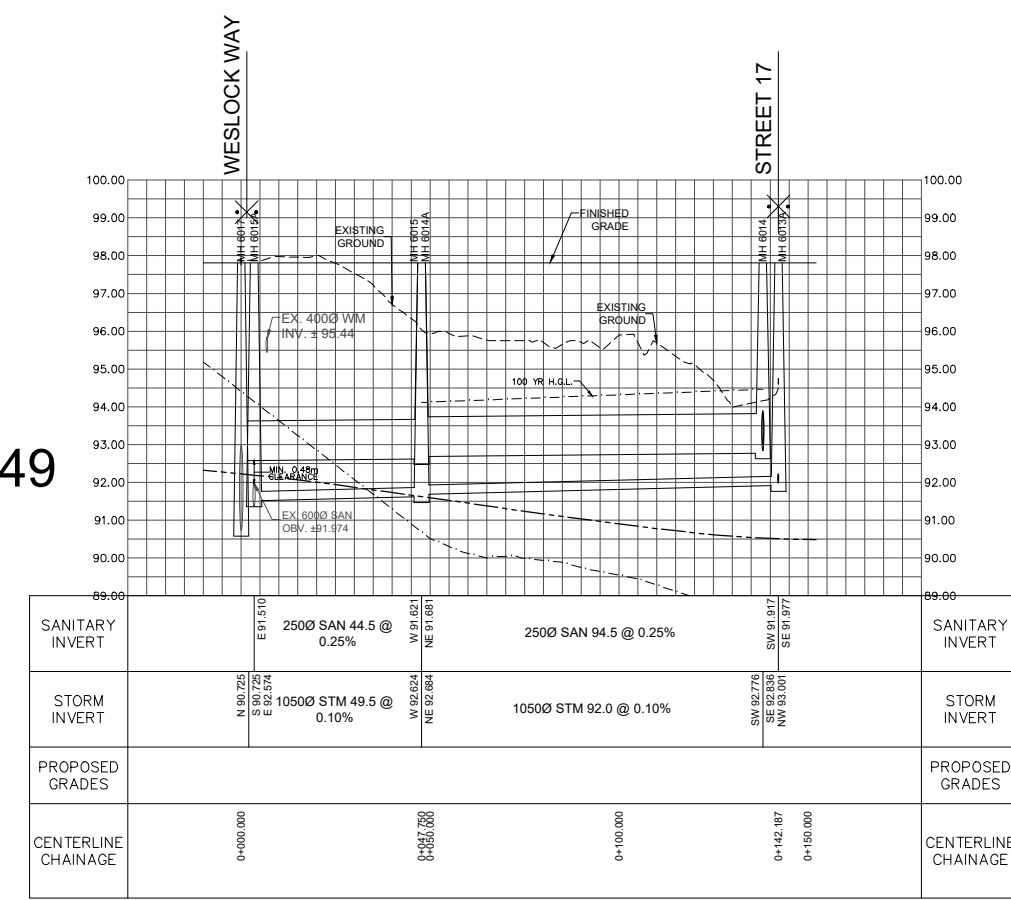
PROFILES

SCALE:	1:2000	PROJECT No.:	1061
DATE:	JUNE 2021	DRAWING:	06D

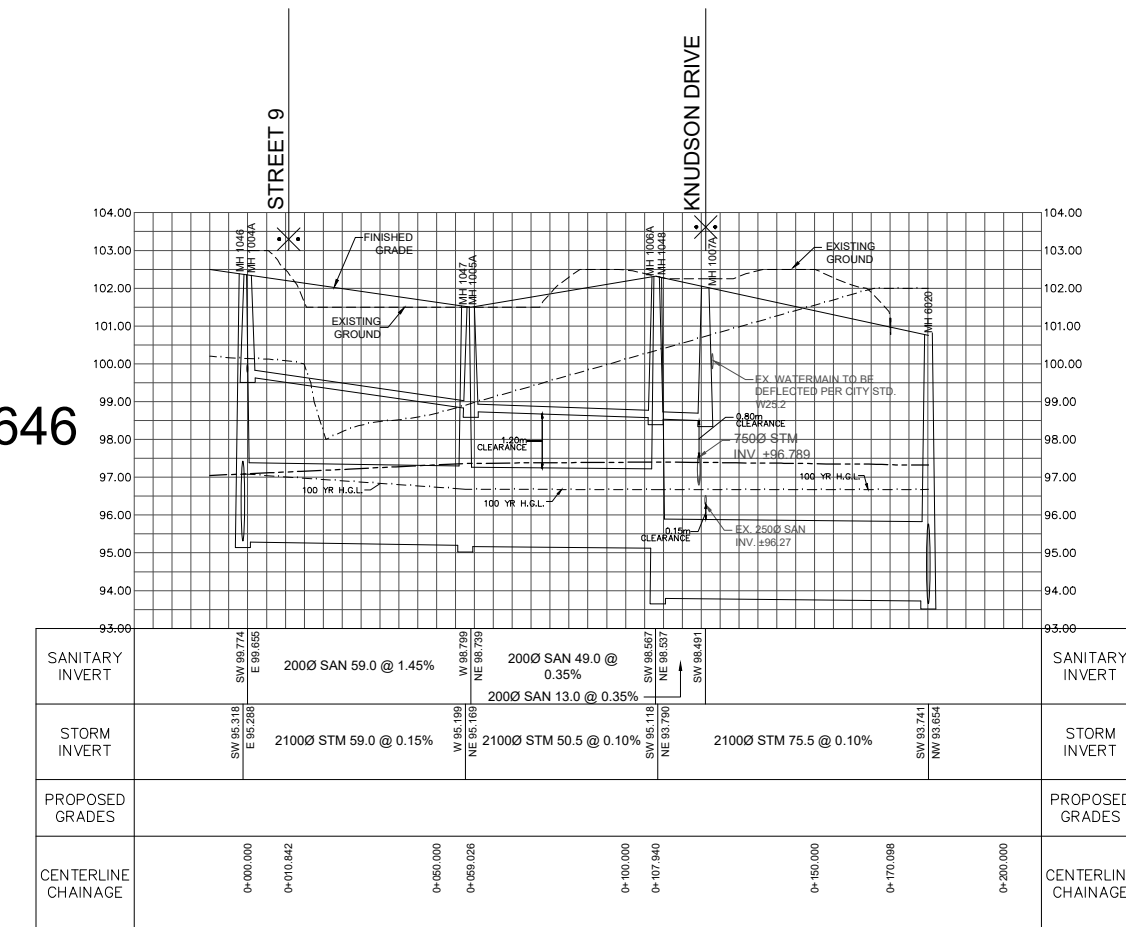
EASM 732



EASM 649



EASM 646



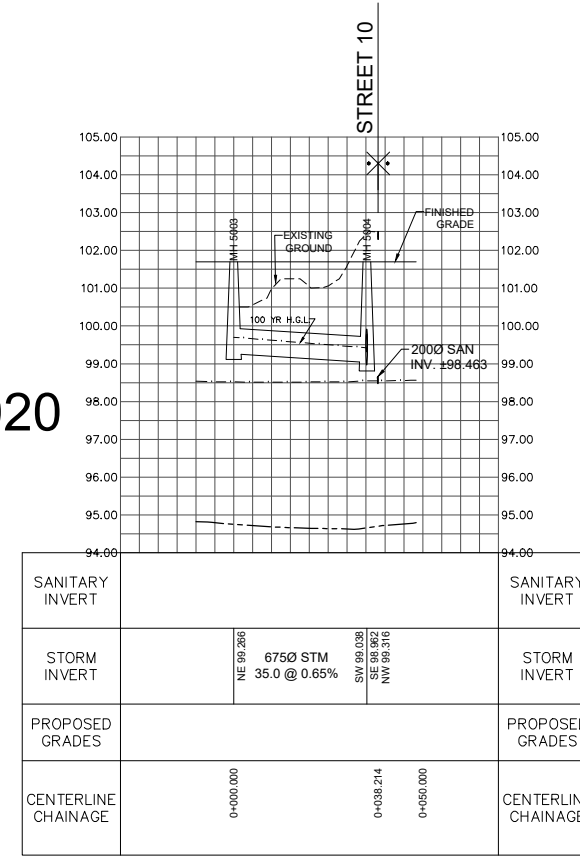
LEGEND

- GROUNDWATER ELEVATION
- BEDROCK ELEVATION
- EXISTING GROUND
- PROPOSED GROUND

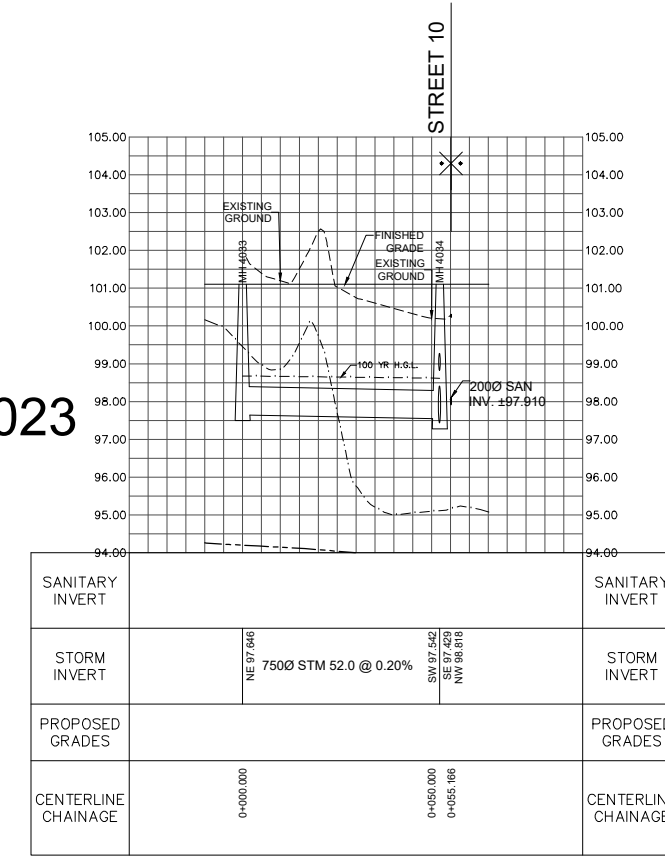
<p>DSEL david schaeffer engineering ltd 600 20th Street, Suite 500 Bathurstville, Ontario, K2B 0E9 Tel. (895) 826-3690 Fax. (895) 826-3983 www.DSEL.ca</p>	<p>7000 CAMPEAU DRIVE</p> <p>CITY OF OTTAWA</p>	PROFILES	
		SCALE: 1:2000	PROJECT No.: 1061
		DATE: JUNE 2021	DRAWING: 08D

CITY FILE No. D07-16-19-0026 CITY PLAN No. XXXXX

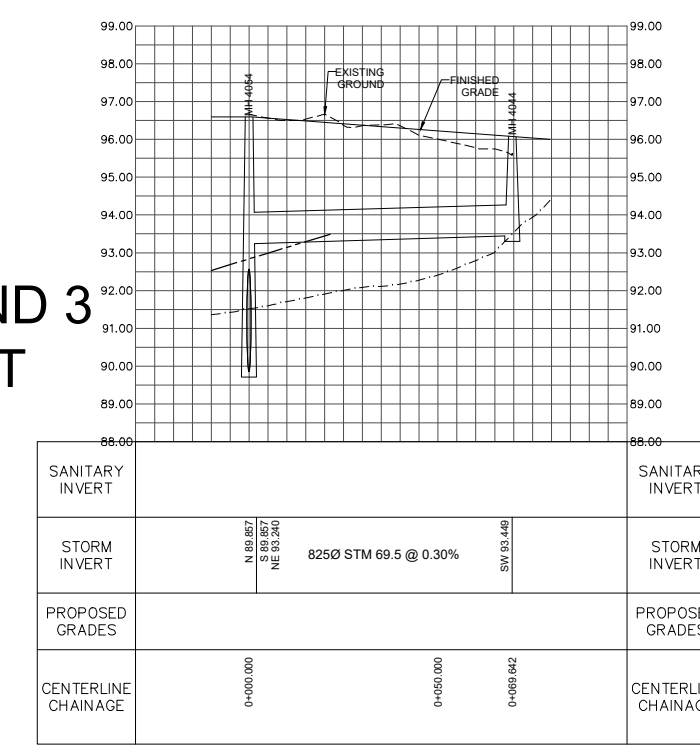
EASM 1020



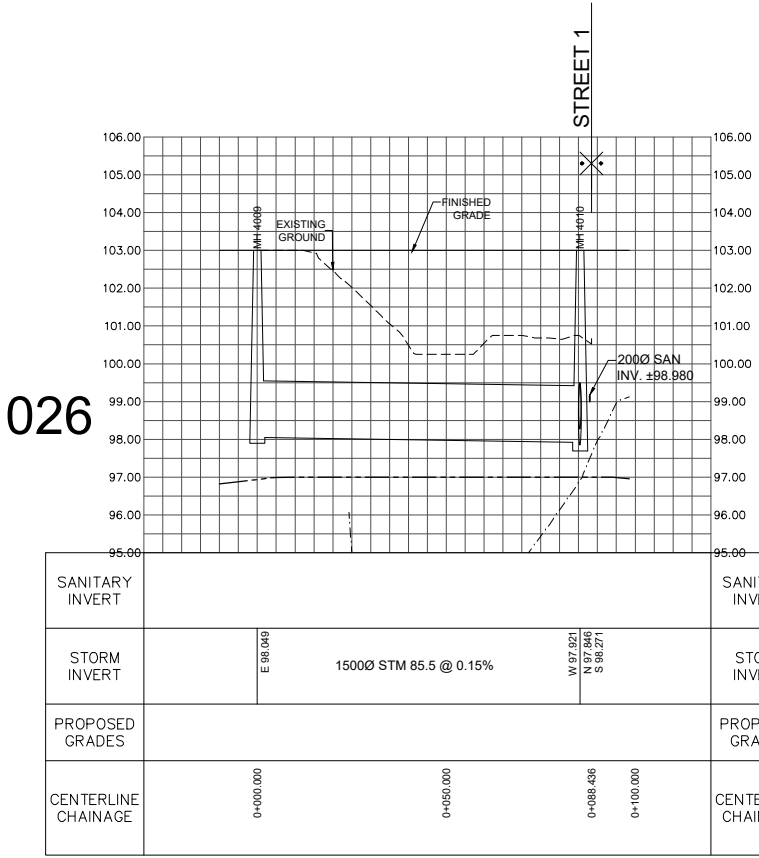
EASM 1023



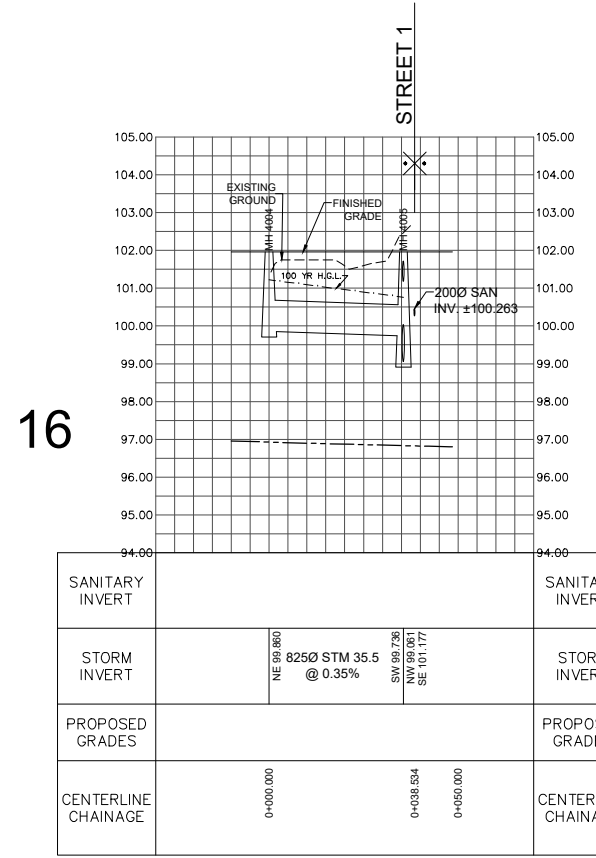
SWM POND 3
OUTLET



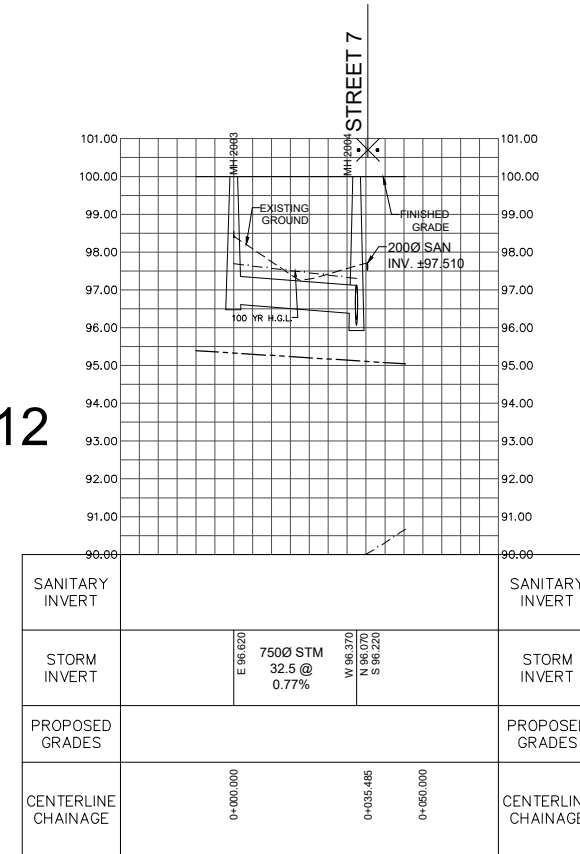
EASM 1026



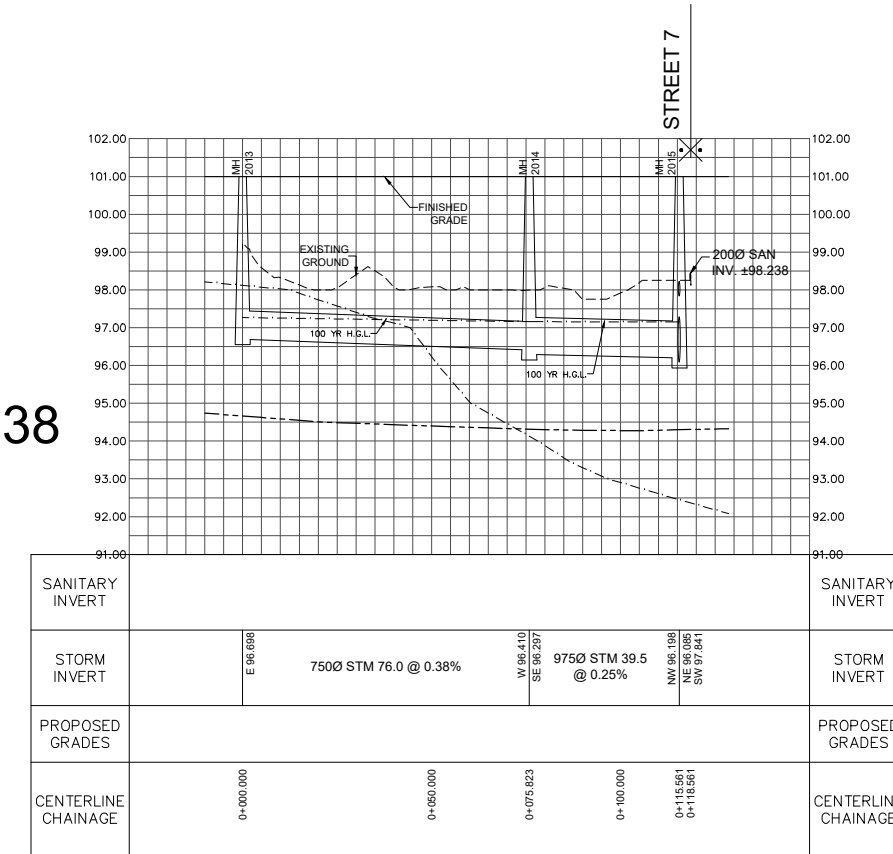
EASM 16



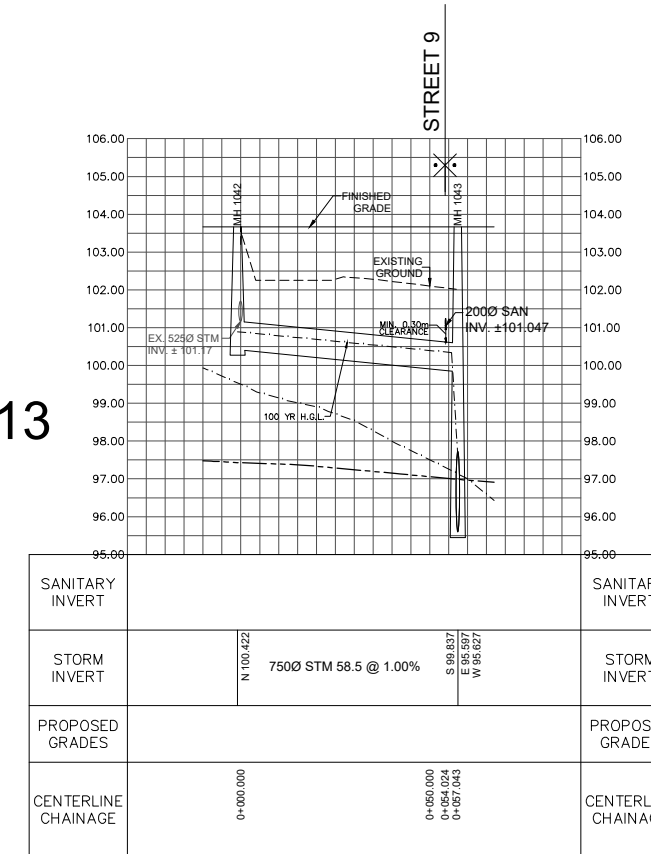
EASM 12



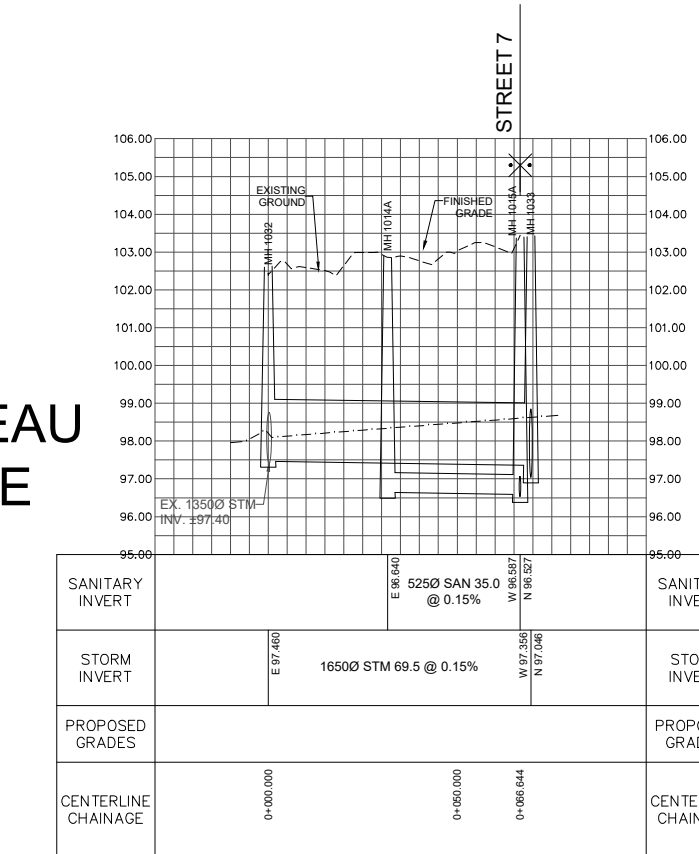
EASM 638



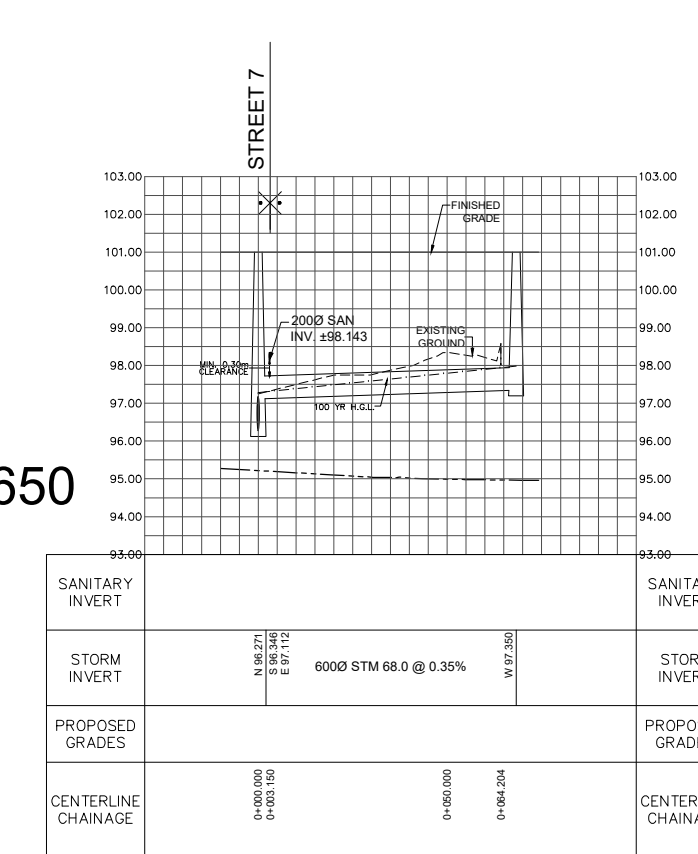
EASM 13



CAMPEAU
DRIVE



EASM 650

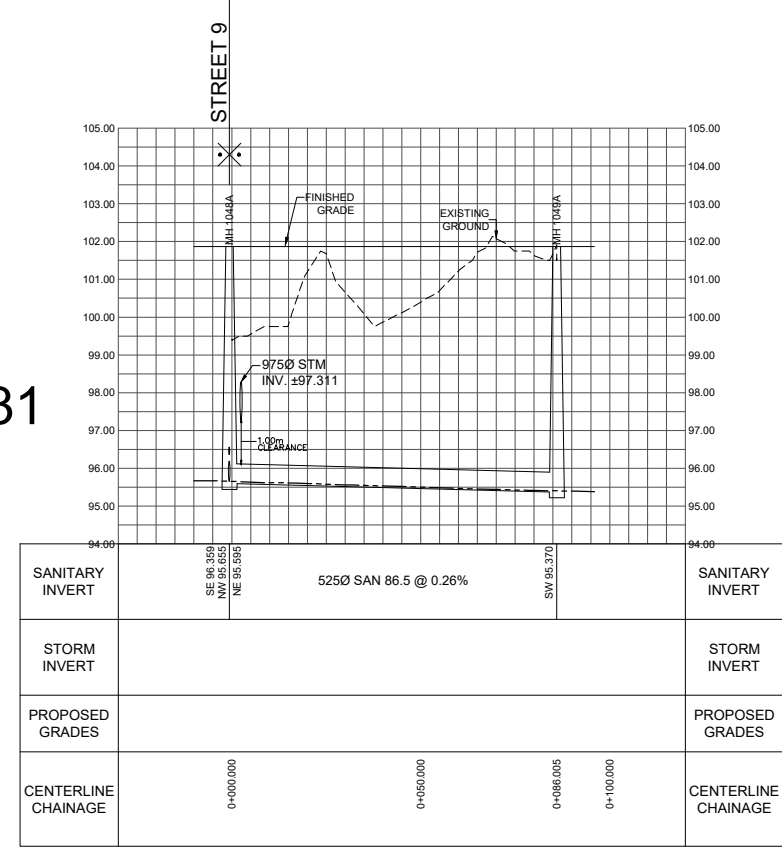


LEGEND

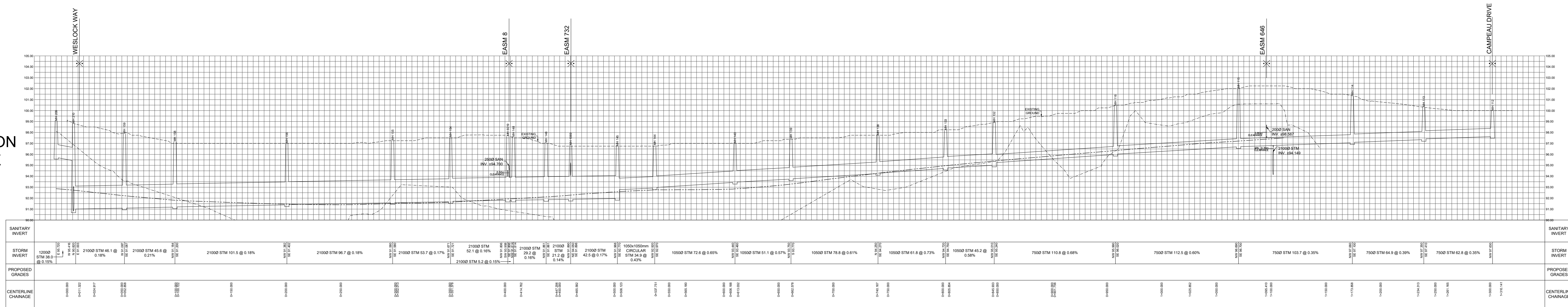
- GROUNDWATER ELEVATION
- BEDROCK ELEVATION
- EXISTING GROUND
- PROPOSED GROUND

<p>600 20th Street, Suite 500 Bathurst, Ontario, K2R 0E9 Tel: (885) 826-3090 Fax: (885) 826-3983 www.DSEL.ca</p>	7000 CAMPEAU DRIVE	PROFILES	
	CITY OF OTTAWA	SCALE: 1:2000	PROJECT No.: 1061
		DATE: JUNE 2021	DRAWING: 09D

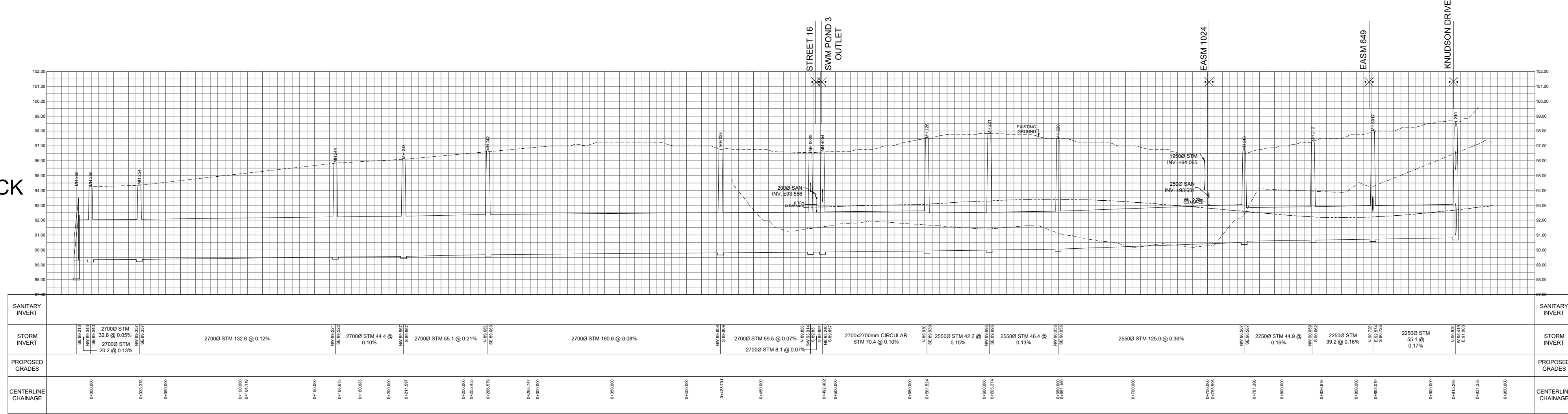
EASM 731



KNUDSON DRIVE



WESLOCK WAY



LEGEND

- GROUNDWATER ELEVATION
- - - BEDROCK ELEVATION
- EXISTING GROUND
- PROPOSED GROUND

DSEL
david schaeffer engineering ltd
600 20th Street Suite 500
Burlington, Ontario, K7R 9E9
Tel: (905) 826-3690
Fax: (905) 826-3983
www.DSEL.ca

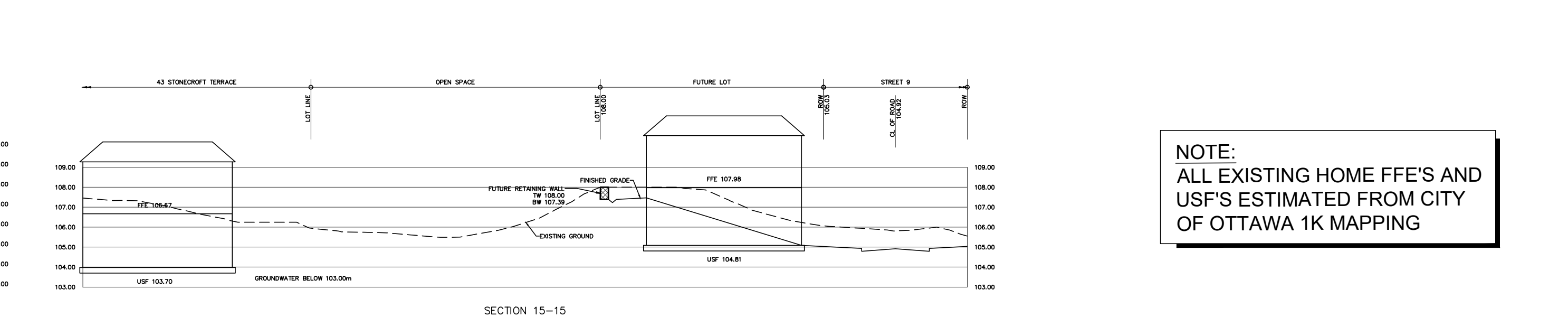
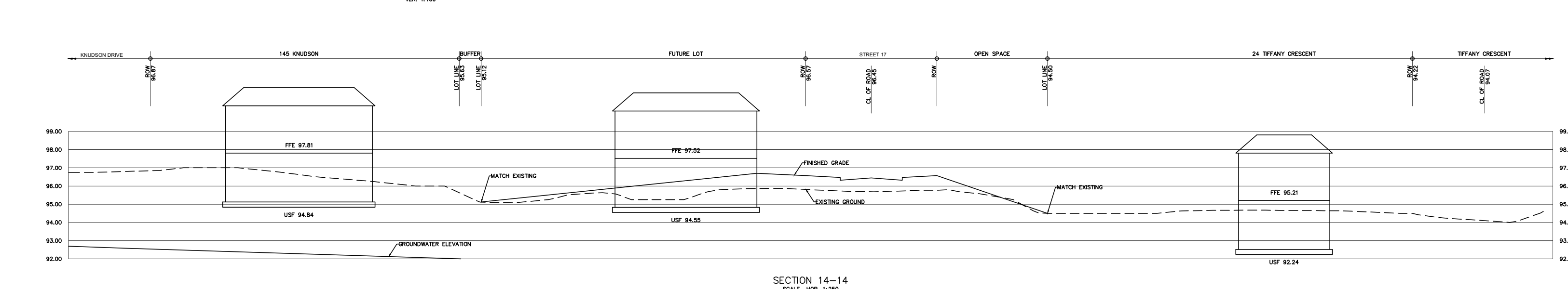
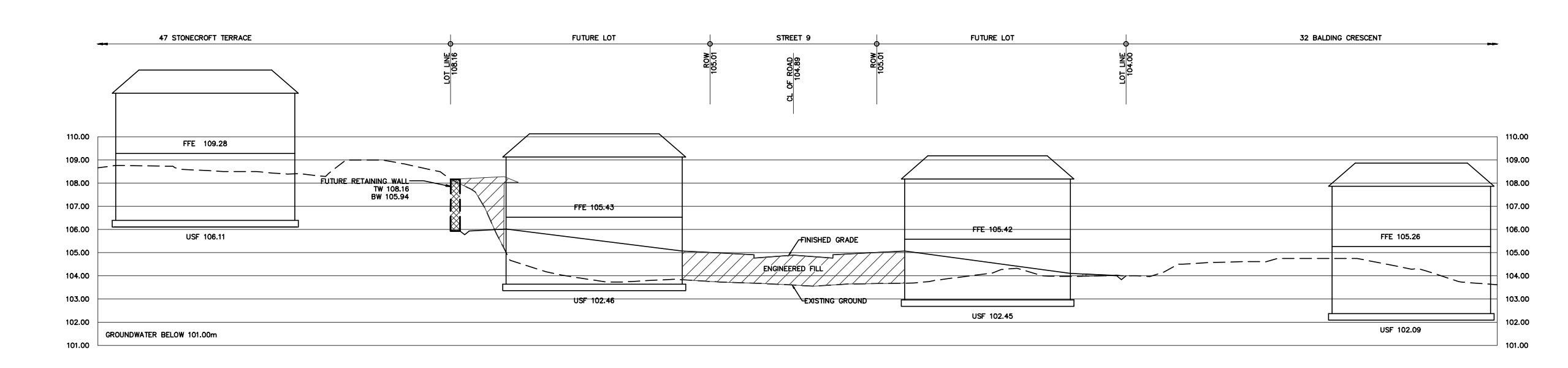
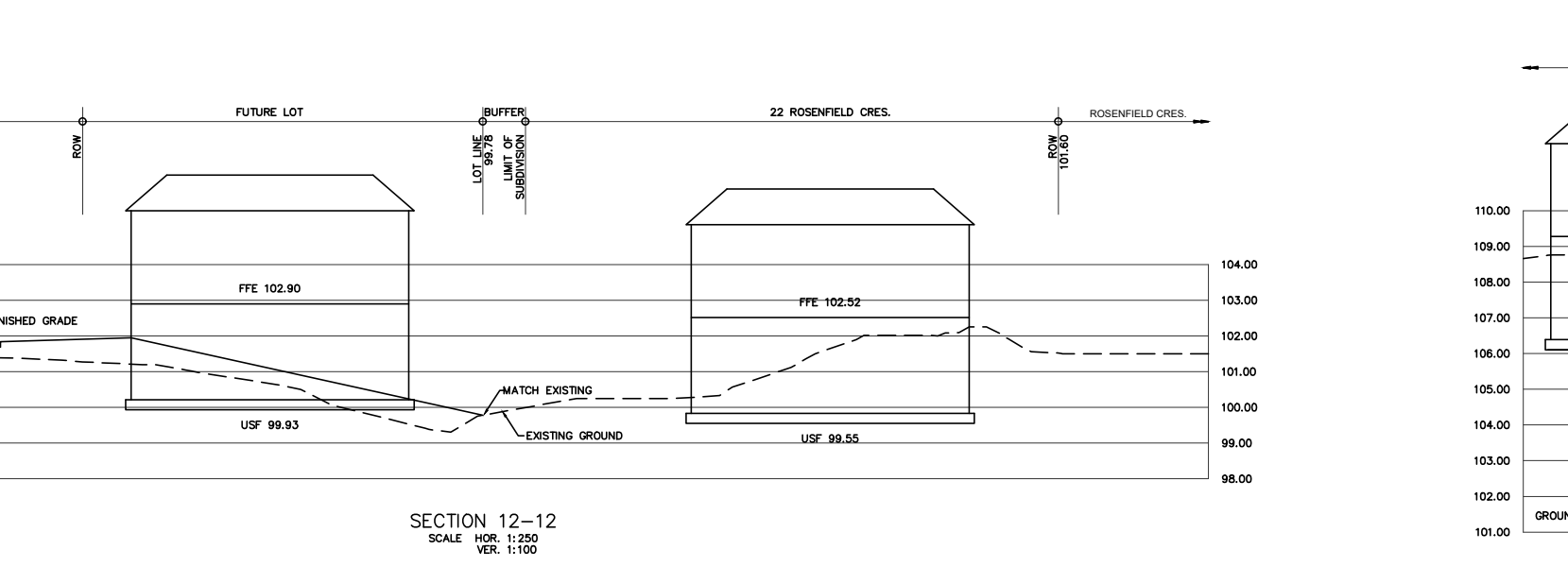
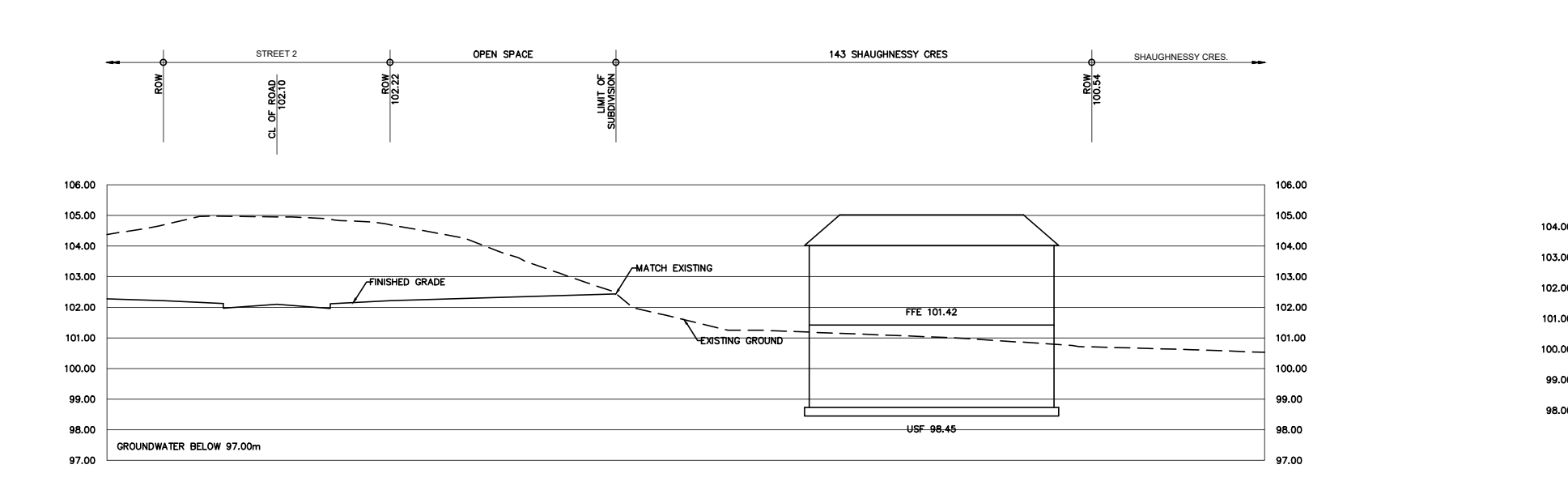
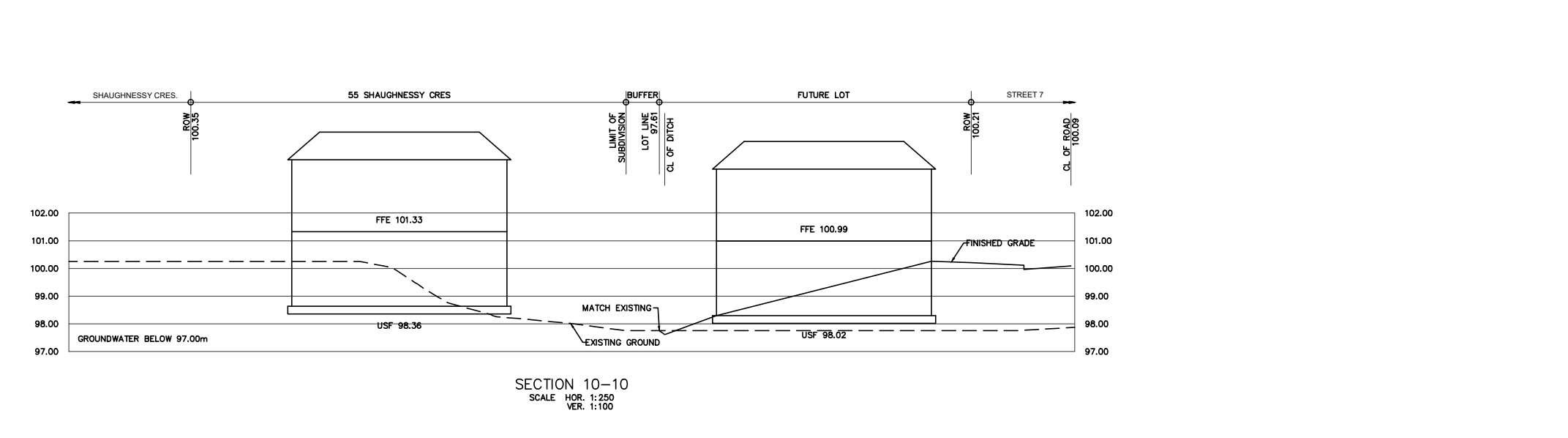
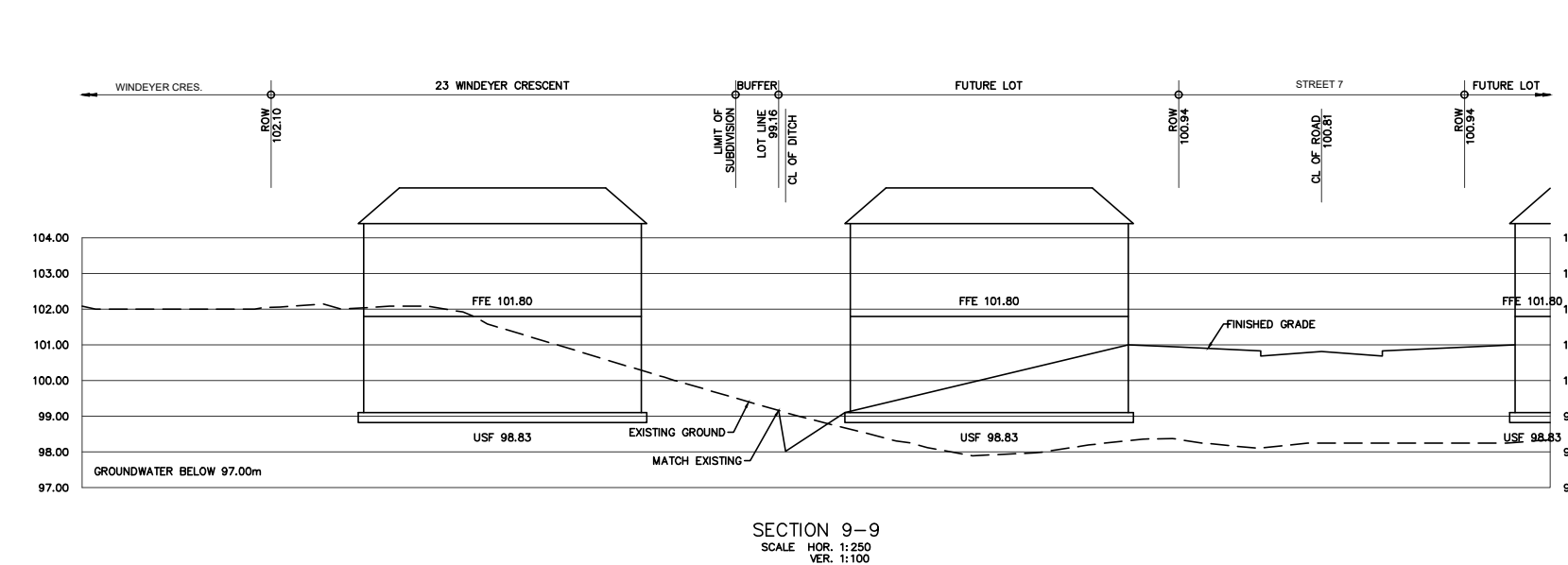
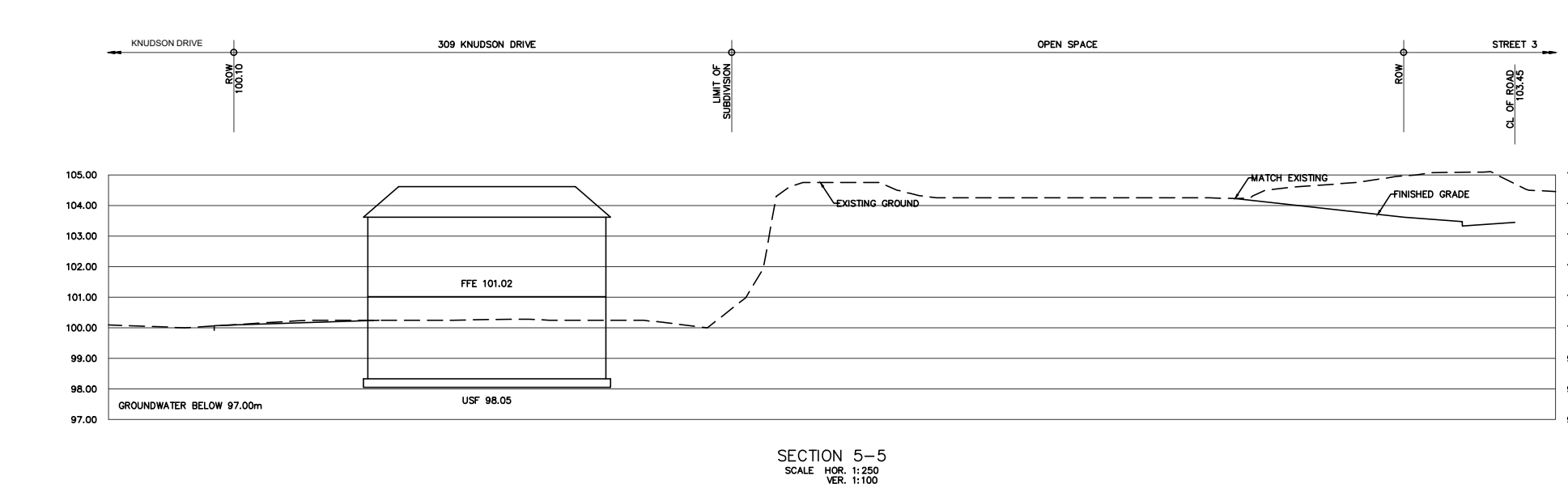
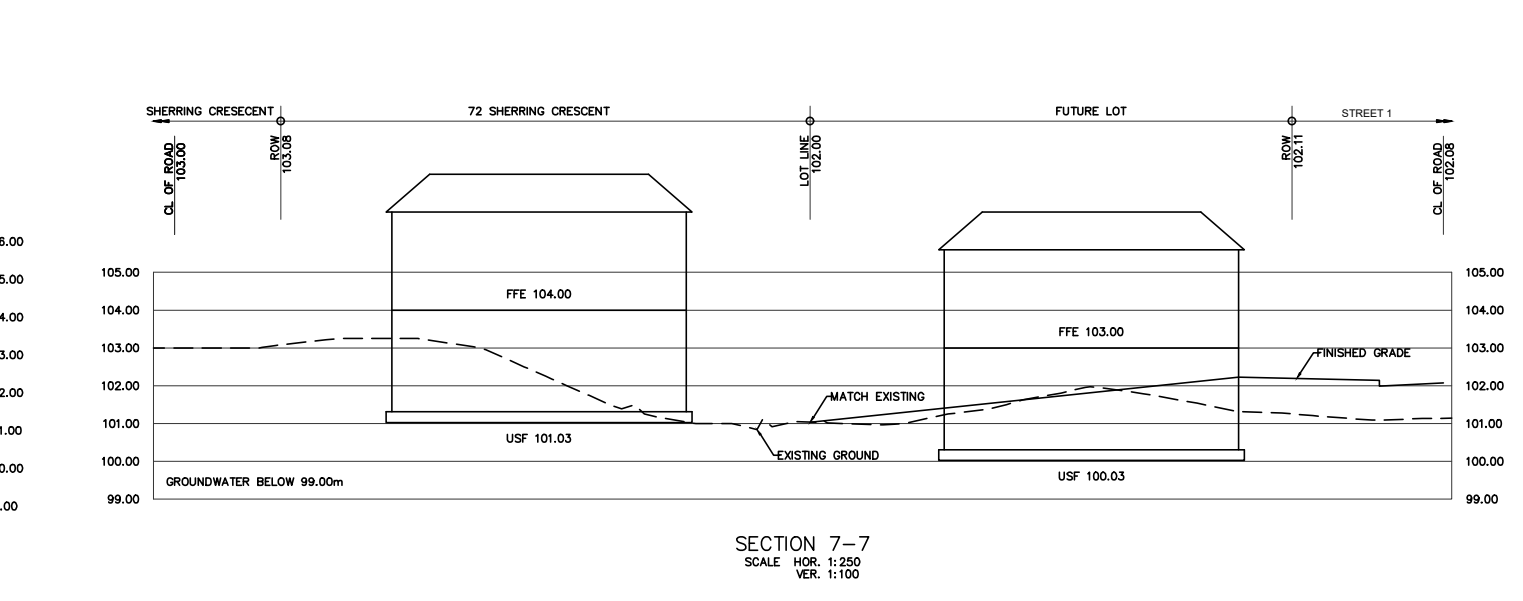
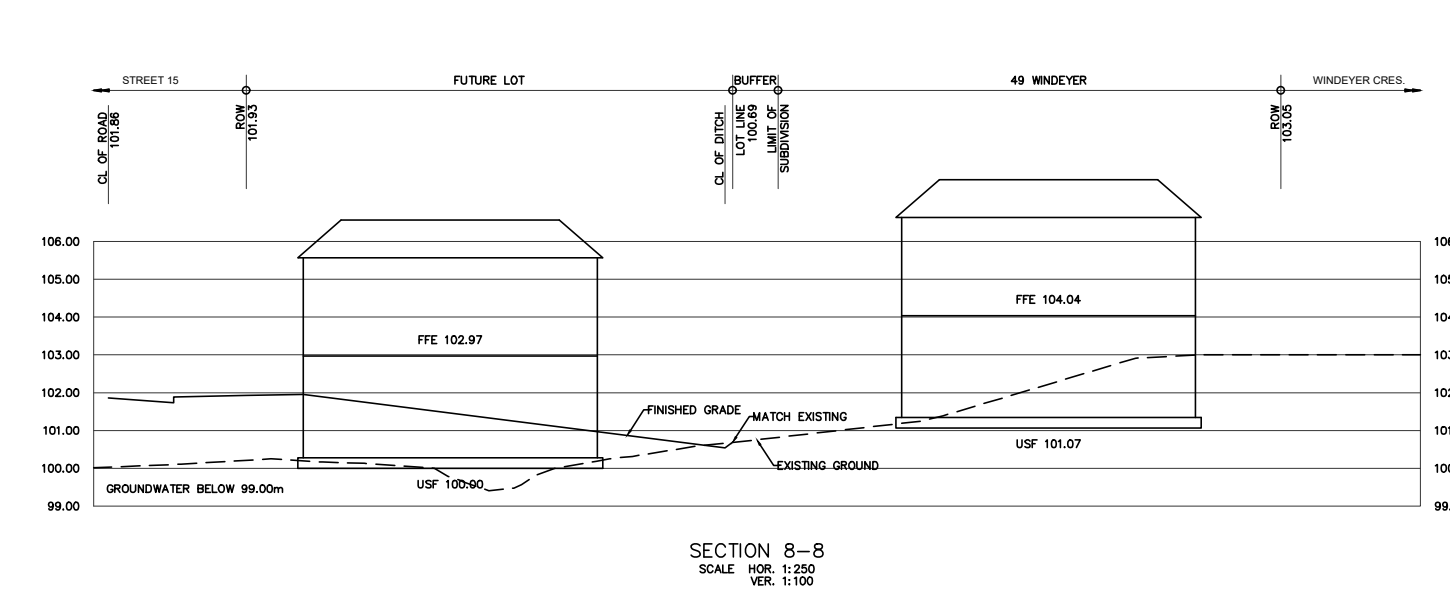
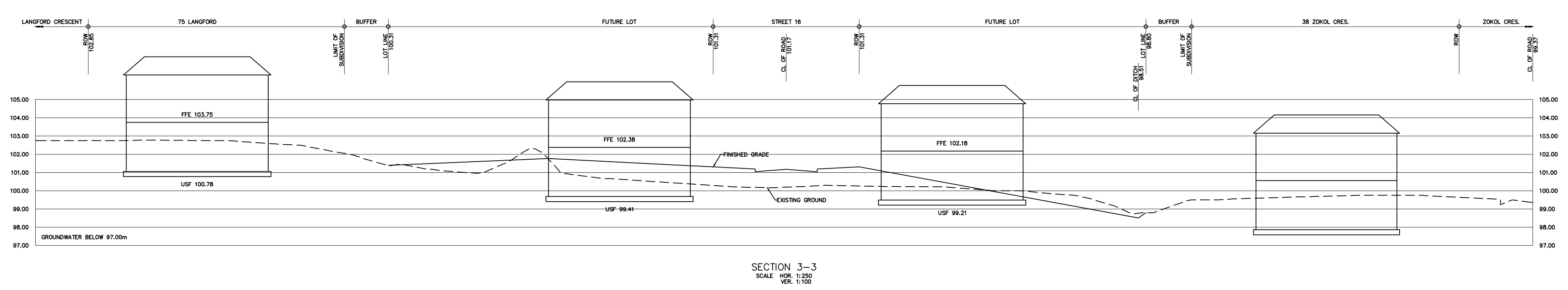
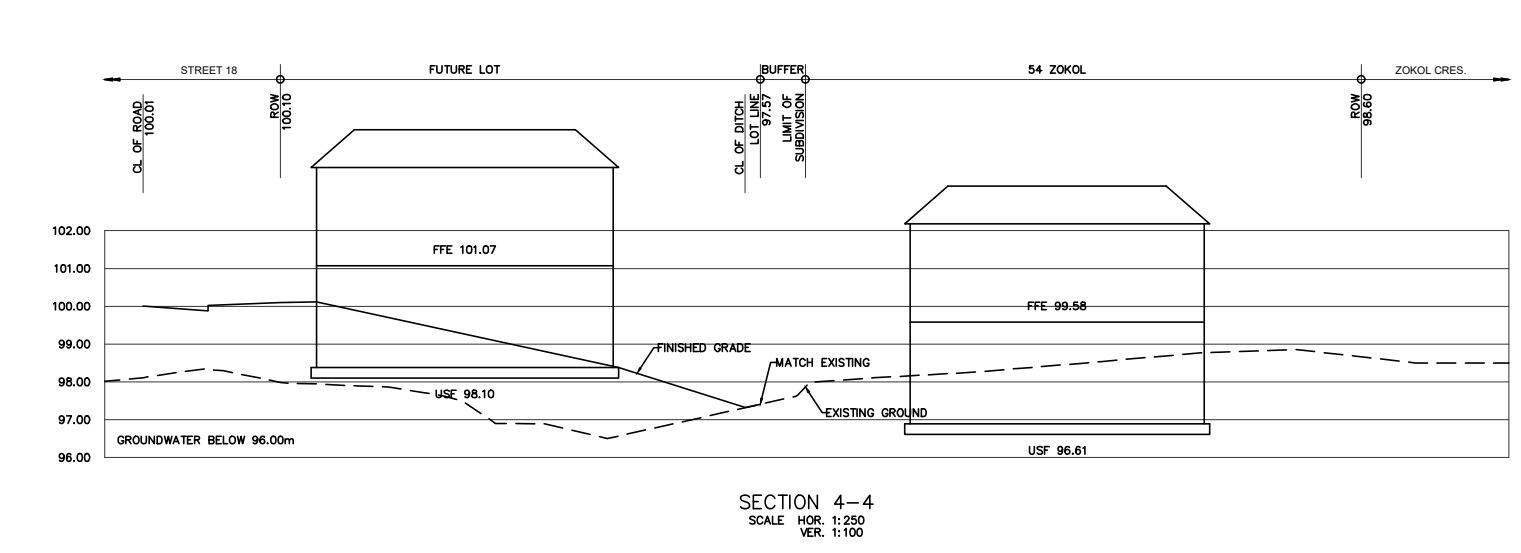
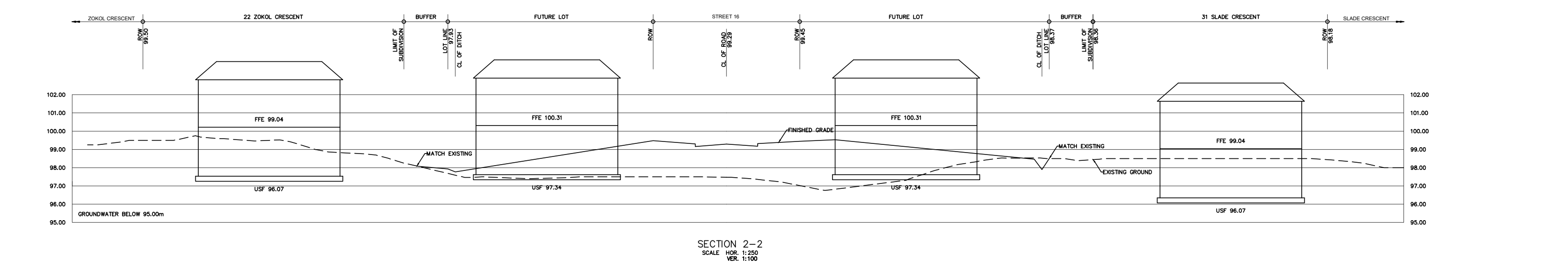
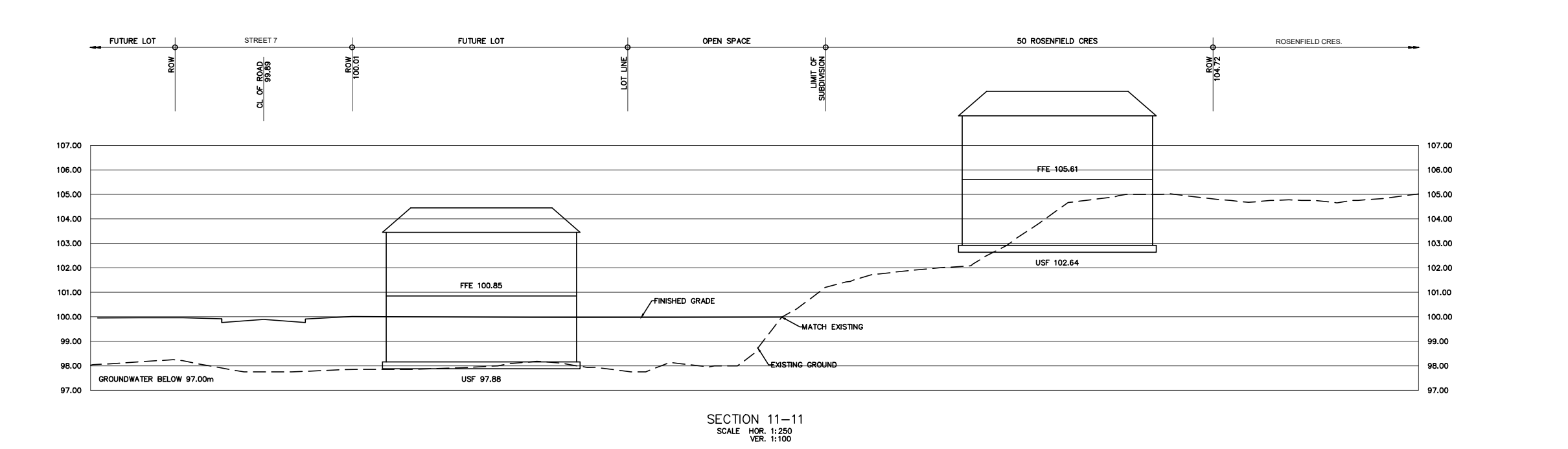
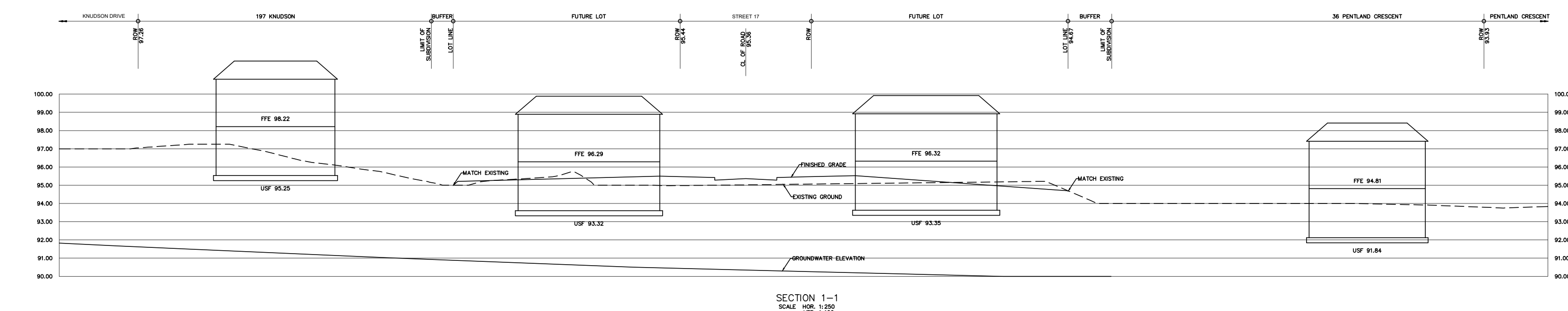
7000 CAMPEAU DRIVE

CITY OF OTTAWA

PROFILES

SCALE:	1:2000	PROJECT No.:	1061
DATE:	JUNE 2021	DRAWING:	10D

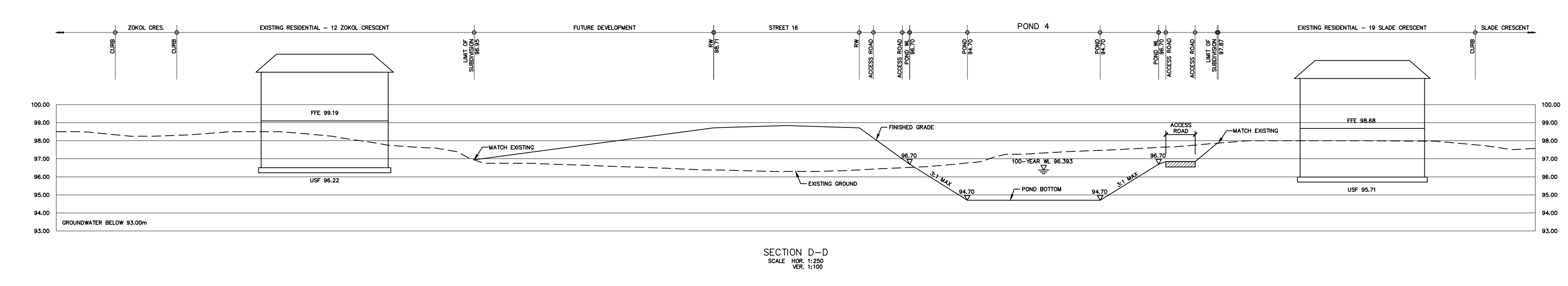
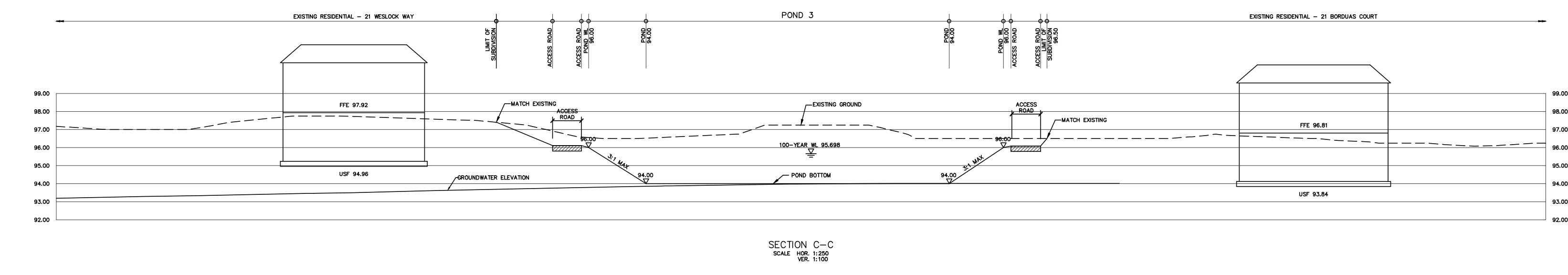
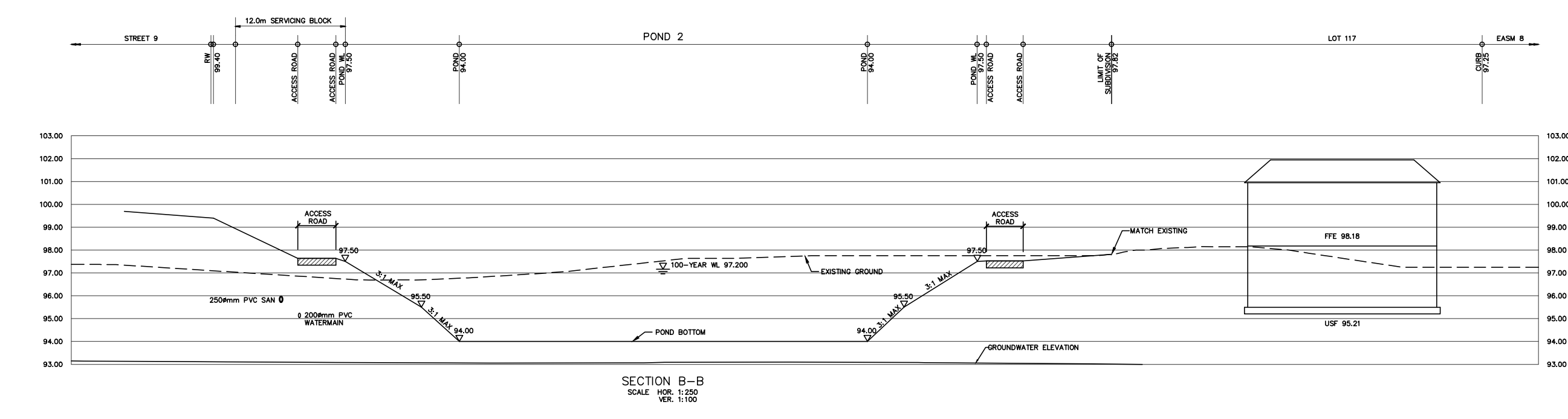
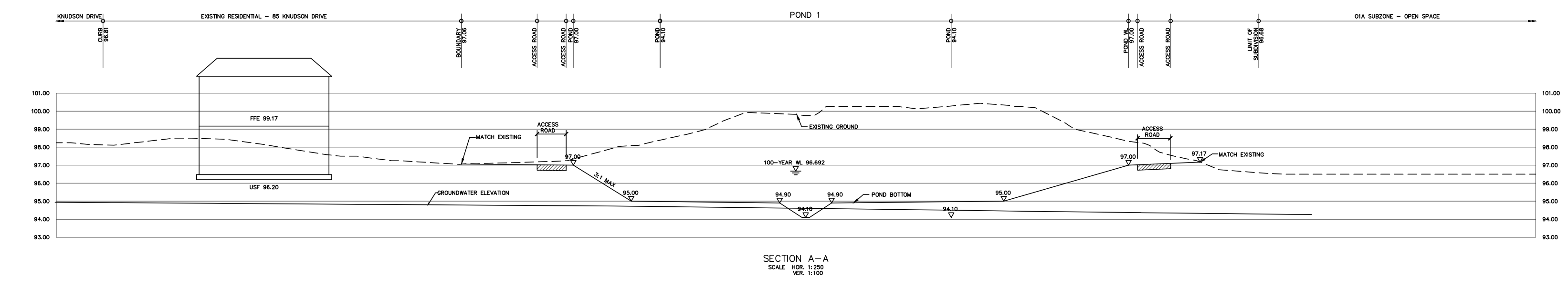
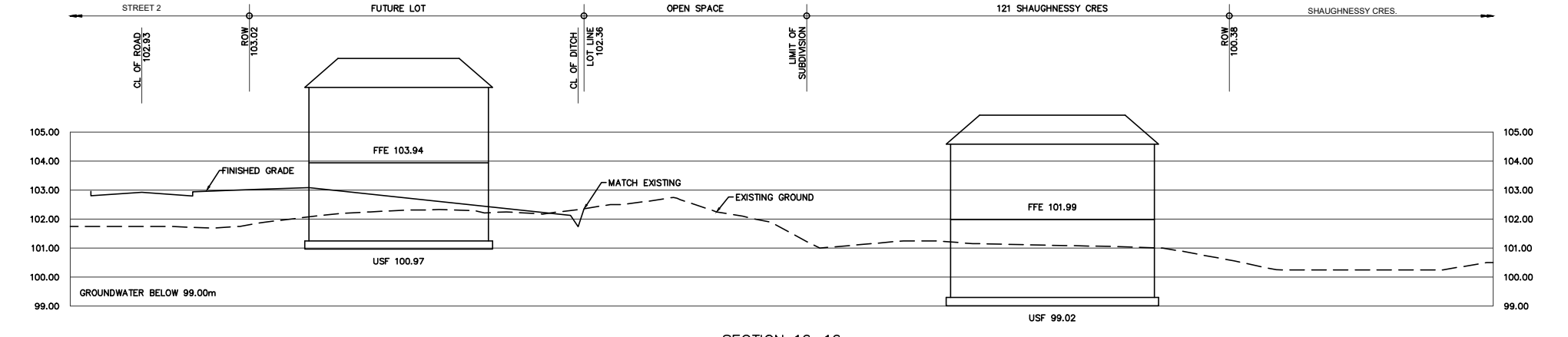
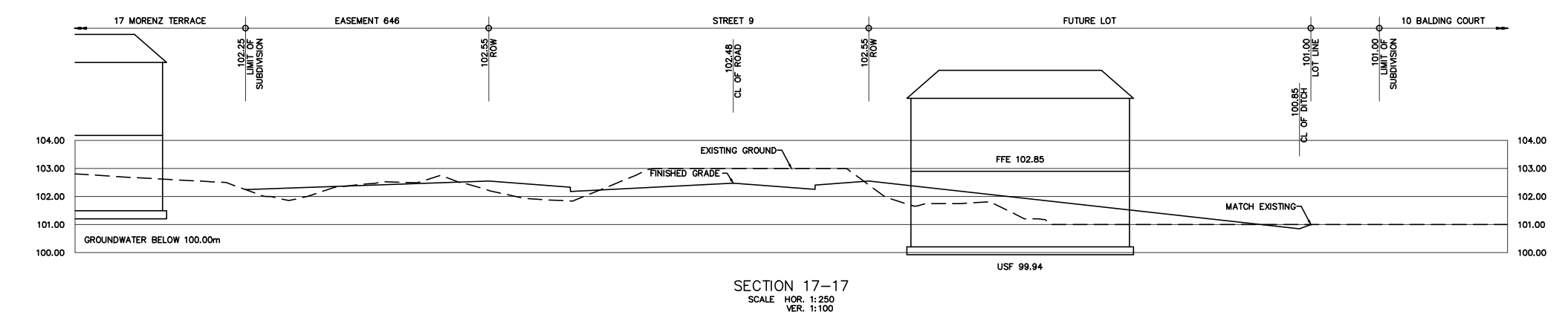
CITY FILE No. D07-16-19-0026 CITY PLAN No. XXXXX



NOTE:
ALL EXISTING HOME FFE'S AND
USF'S ESTIMATED FROM CITY
OF OTTAWA 1K MAPPING

CITY FILE No. D07-16-19-0026 CITY PLAN No. XXXX

	7000 CAMPEAU DRIVE		11D - SECTIONS	
	CITY OF OTTAWA		SCALE: AS SHOWN	PROJECT No.: 1061
120 Iber Road, Unit 103 Stittsville, Ontario, K2S 1E9 Tel: (613) 836-8556 Fax: (613) 836-7183 www.DSEL.ca		DATE: MAY 2021	DRAWING: 11D	



NOTE:
ALL EXISTING HOME FFE'S AND
USF'S ESTIMATED FROM CITY
OF OTTAWA 1K MAPPING

CITY FILE No. D07-16-19-0026 CITY PLAN No. XXXXX



7000 CAMPEAU DRIVE
CITY OF OTTAWA

12D - SECTIONS			
SCALE:	AS SHOWN	PROJECT No.:	1061
DATE:	MAY 2021	DRAWING:	12D