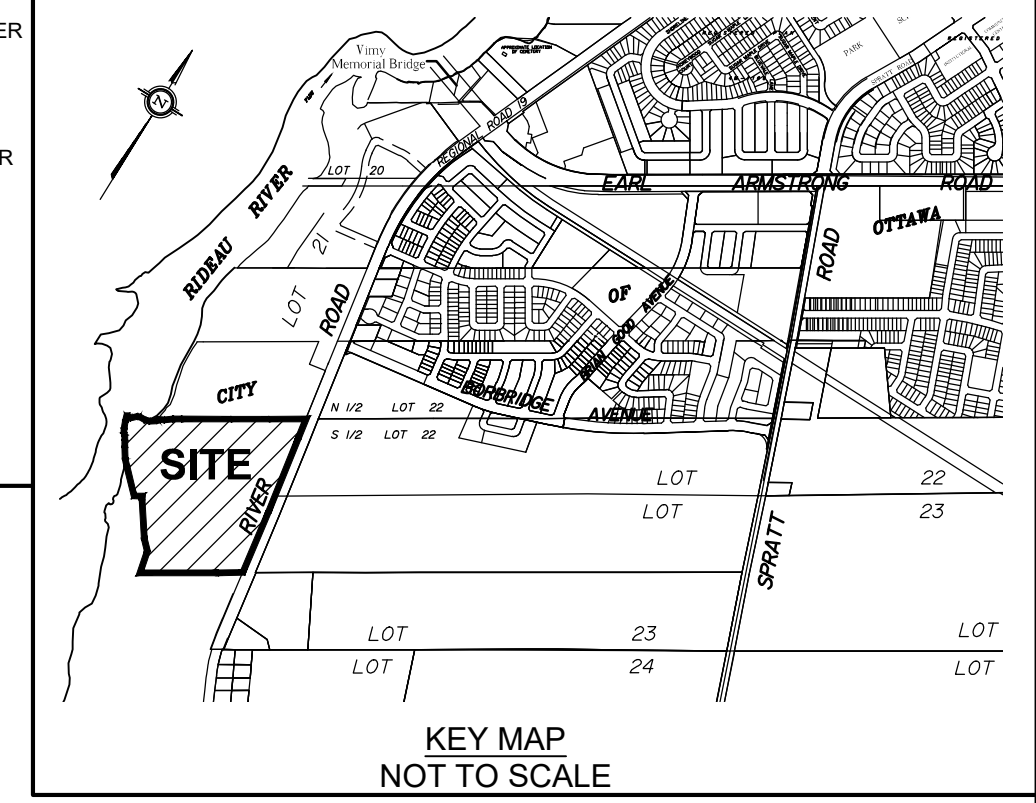


SUBJECT TO THE CONDITIONS, IF ANY, SET FORTH IN OUR LETTER DATED _____

THIS DRAFT PLAN IS APPROVED BY THE CITY OF OTTAWA UNDER SECTION 51 OF THE PLANNING ACT. THIS _____ DAY OF _____, 20____.

--- DON HERWEYER, MCIIP RPP, MANAGER ---
DEVELOPMENT REVIEW-SOUTH
PLANNING, INFRASTRUCTURE AND ECONOMIC
DEVELOPMENT DEPARTMENT, CITY OF OTTAWA



**DRAFT PLAN OF SUBDIVISION OF
PART OF LOTS 22 And 23
BLOCK FRONT CONCESSION
RIDEAU FRONT**
Geographic Township of Gloucester
CITY OF OTTAWA
Prepared by Annis, O'Sullivan, Vollebek Ltd.

Scale 1 : 1000
40 30 20 10 0 10 20 30 40 Metres

Metric
DISTANCES SHOWN ON THIS PLAN ARE IN METRES AND CAN BE CONVERTED TO FEET BY DIVIDING BY 0.3048

SURVEYOR'S CERTIFICATE

I CERTIFY THAT:
The boundaries of the lands to be subdivided and their relationship to adjoining lands have been accurately and correctly shown.

Date _____ Andre Roy
ONTARIO LAND SURVEYOR

OWNER'S CERTIFICATE

This is to certify that we are the owners of the lands to be subdivided and that this plan was prepared in accordance with our instructions.

Date _____ Jim Burghout
Authorized Signing Officer
Claridge Homes Corporation
I have the authority to bind the corporation.

ADDITIONAL INFORMATION REQUIRED UNDER SECTION 51-17 OF THE PLANNING ACT

- (a) see plan
- (b) see plan
- (c) see plan
- (d) single family residential housing and storm water management lands
- (e) see plan
- (f) see plan
- (g) see plan
- (h) City of Ottawa
- (i) see soils report
- (j) see plan
- (k) sanitary, storm sewers, municipal water, bell, hydro, cable and gas to be available
- (l) see plan

