

CONCRETE PAVING/MONOLITHIC CURB
Refer to Grading Plan for Grading

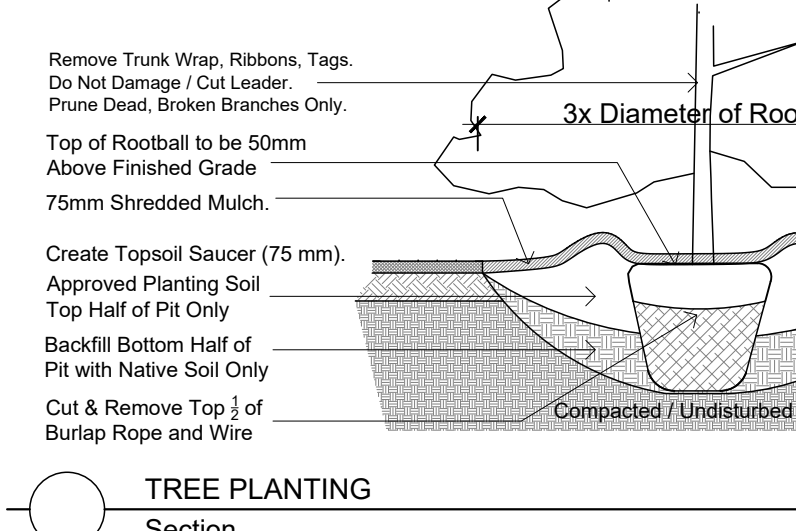
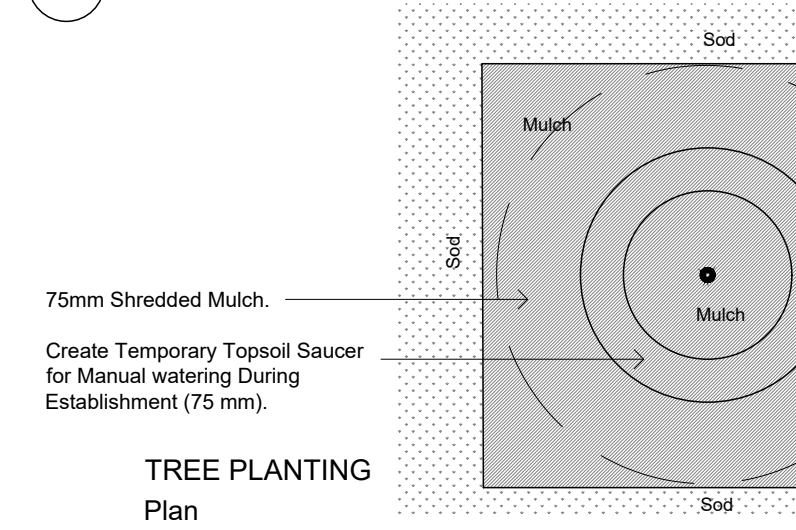
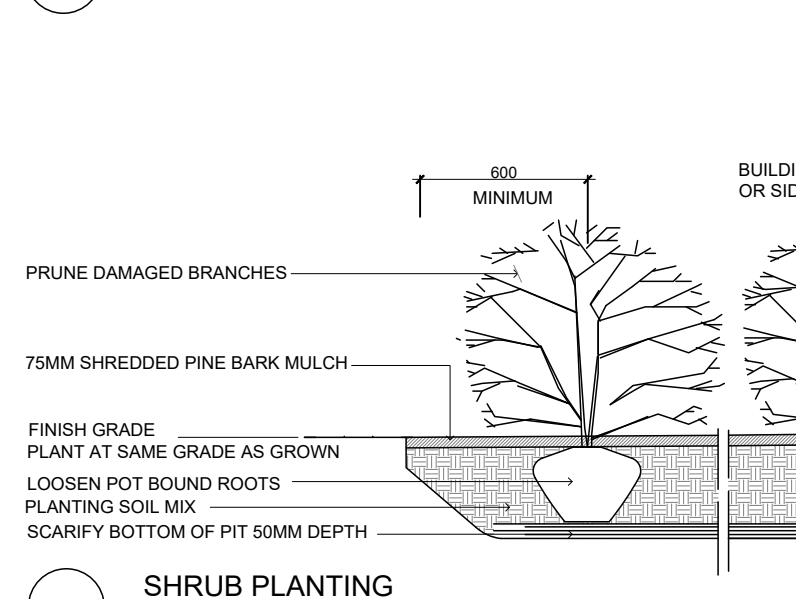
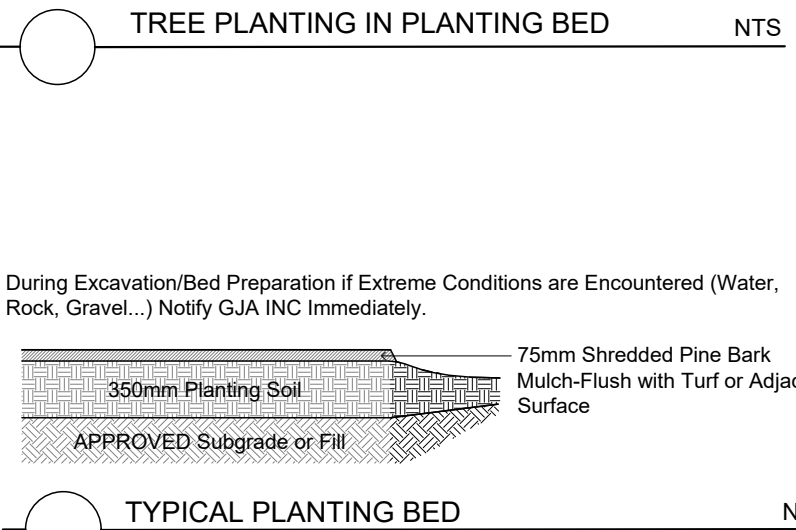
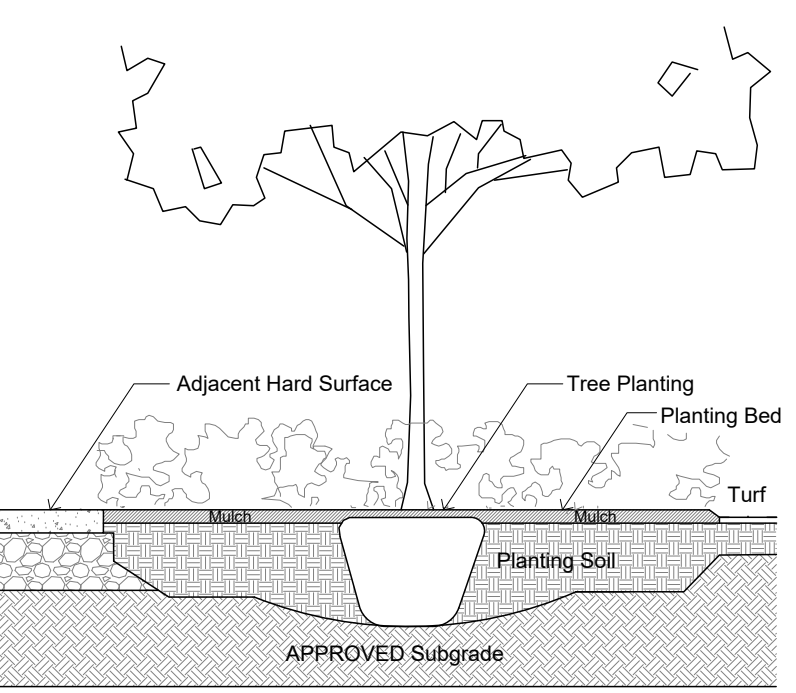
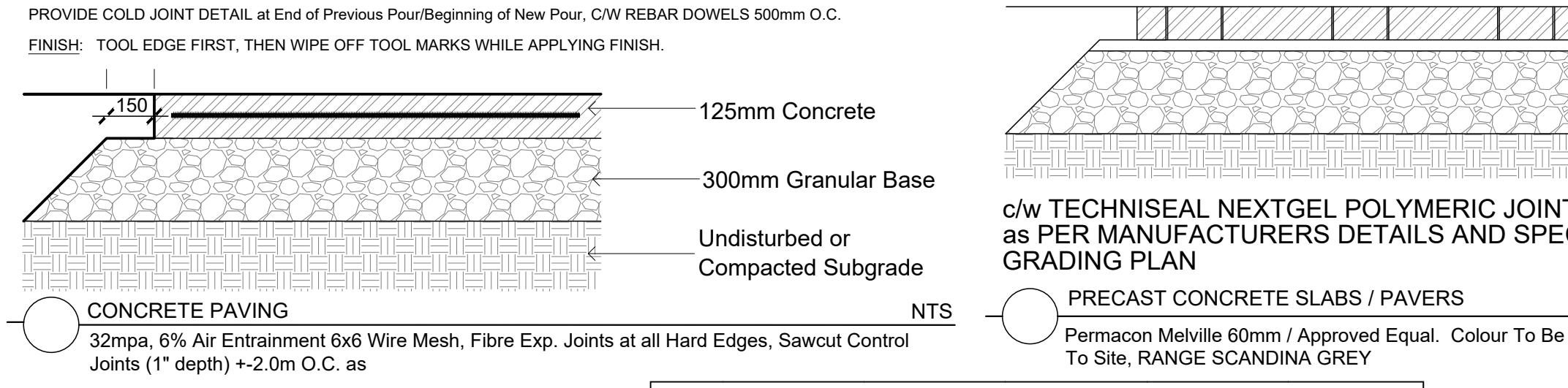
CONCRETE - FINISH LIGHT BROOM, WOOD FLOAT MAGNESIUM FLOAT:
ALL CONCRETE FINISHES TO BE APPROVED BY GJA LANDSCAPE ARCHITECT.

SAWCUT LAYOUT FOR ALL AREAS TO BE MARKED ON SITE IN RED CHALK, REVIEWED, ADJUSTED AND APPROVED BY GJA LANDSCAPE ARCHITECT PRIOR TO ANY CUTTING.

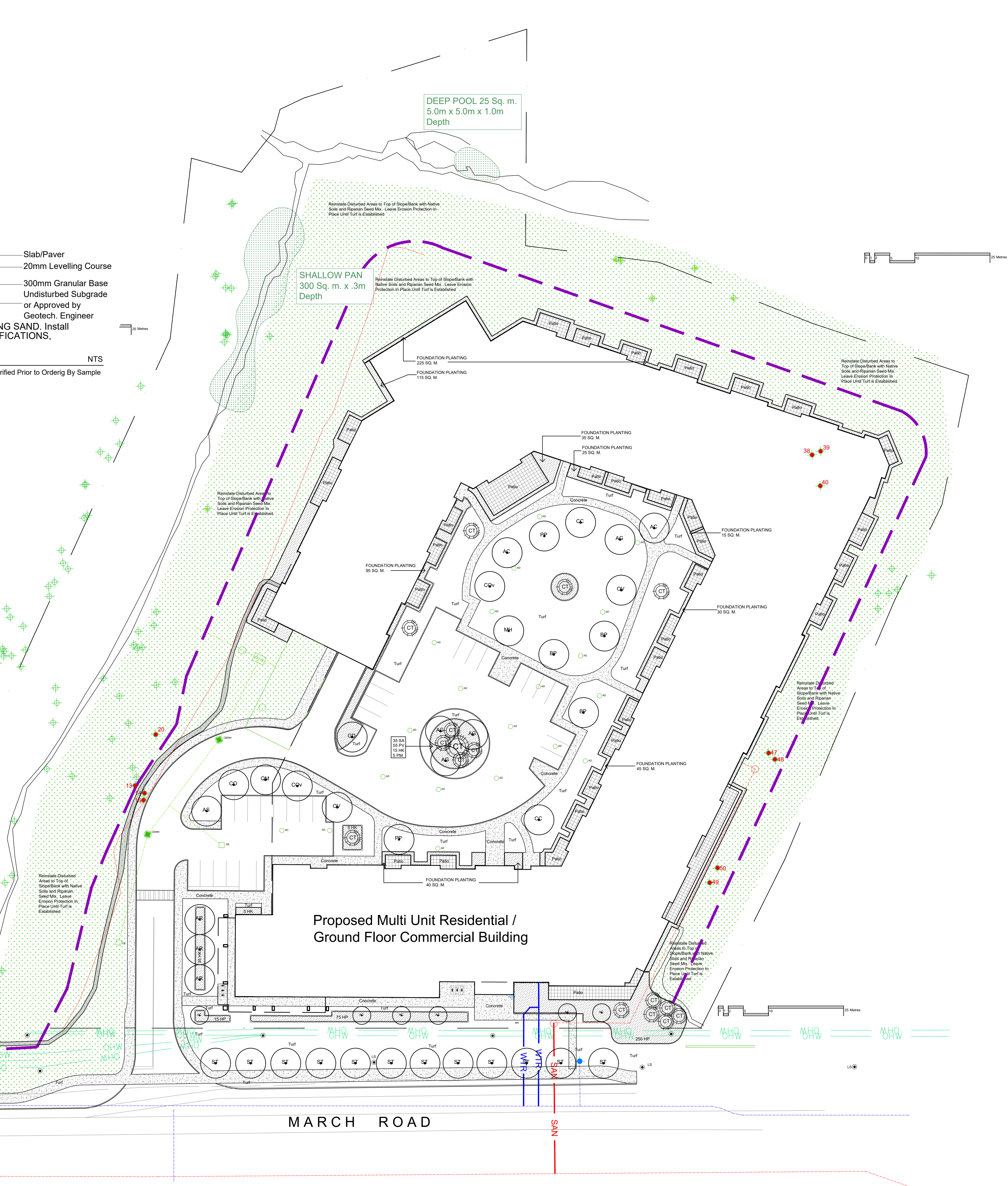
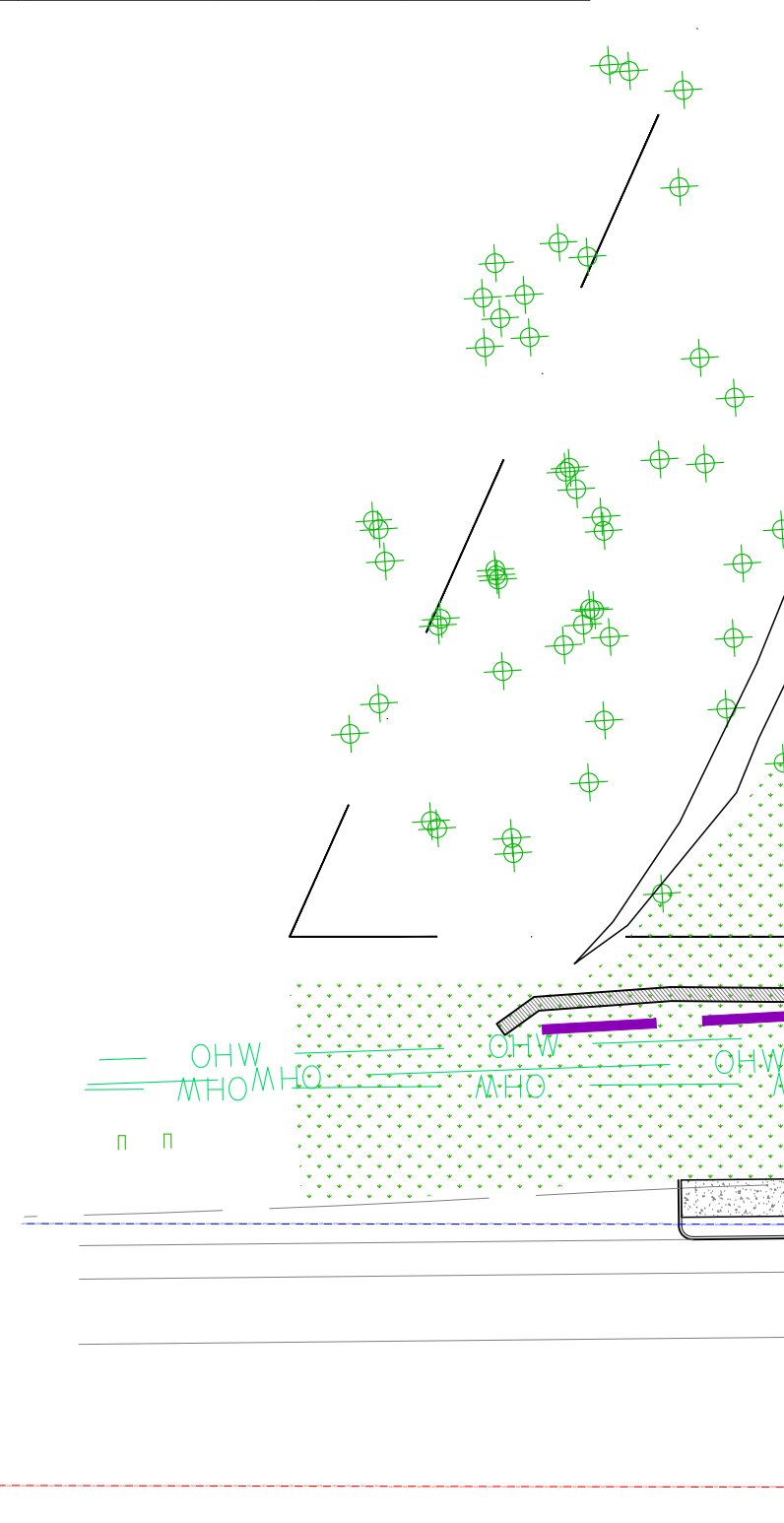
EXPANSION JOINT LAYOUT FOR ALL AREAS TO BE LAID OUT ON SITE, REVIEWED, ADJUSTED AND APPROVED BY GJA LANDSCAPE ARCHITECT PRIOR TO ANY CONCRETE POURING.

PROVIDE COLD JOINT DETAIL at End of Previous Pour/Beginning of New Pour, C/W REBAR DOWELS 500mm O.C.

FINISH: TOOL EDGE FIRST, THEN WIFE OFF TOOL MARKS WHILE APPLYING FINISH.



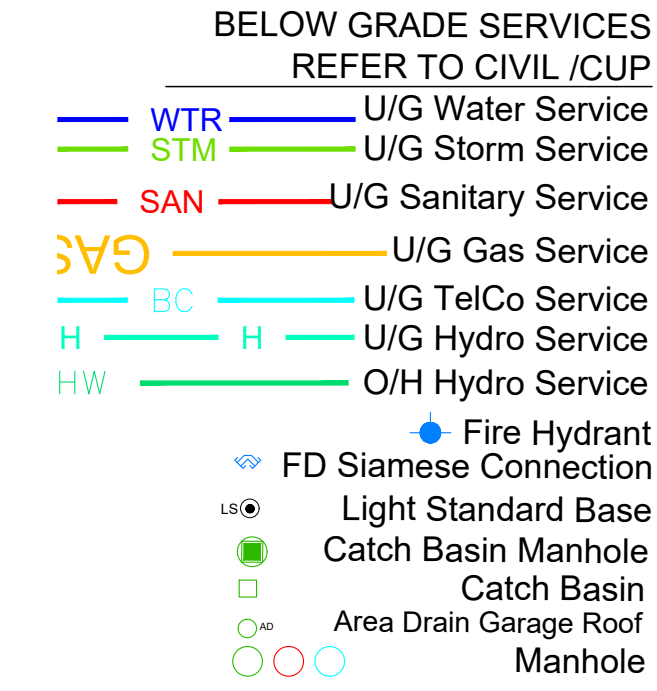
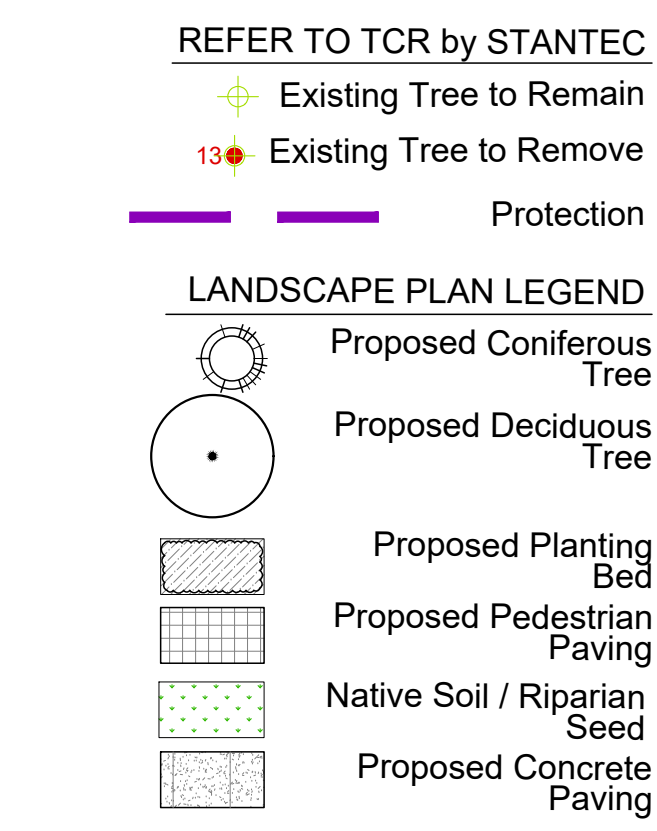
CALIPER B AND B TREES 910 MARCH ROAD LEPINE CORP GJA INC.					
Code	Qty	Botanical Name	Common Name	Size	Condition
AC	3	Amelanchier canadensis	Tree Serviceberry	60mm cal	B + B specimen
AG	4	Aesculus glabra	Ohio Buckeye	60mm cal	B + B specimen
AR	3	Acer rubrum	Red Maple	60mm cal	B + B specimen
AS	1	Acer saccharum	Sugar Maple	60mm cal	B + B specimen
BP	3	Betula papyrifera	Paper Birch	60mm cal	B + B specimen
CC	2	Carpinus caroliniana	Hornbeam Bluebeech	60mm cal	B + B specimen
Cov	2	Carya ovata	Shagbark Hickory	60mm cal	B + B specimen
CO	1	Callis occidentalis	Common Hackberry	60mm cal	B + B specimen
GD	2	Gymnocladus dioica	Kentucky Coffee Tree	60mm cal	B + B specimen
MH	1	Malus 'Harvest Gold'	Harvest Gold Crabapple	60mm cal	B + B specimen
OV	2	Ostrya virginiana	Hophornbeam Ironwood	60mm cal	B + B specimen
PP	2	Prunus pennsylvanica	Pink Cherry	60mm cal	B + B specimen
QM	2	Quercus macrocarpa	Bur Oak	60mm cal	B + B specimen
QR	1	Quercus rubra	Red Oak	60mm cal	B + B specimen
TOTAL 34					
AB	TBD	Abies balsamea	Balsam Fir	1.5m Hl.	B + B specimen
AC	TBD	Abies concolor	Silver Fir	1.5m Hl.	B + B specimen
JV	TBD	Juniperus virginiana	Eastern Red Cedar	1.5m Hl.	B + B specimen
LL	TBD	Larix laricina	Eastern Larch / Tamarack	1.5m Hl.	B + B specimen
PG	TBD	Picea glauca	White Spruce	1.5m Hl.	B + B specimen
PR	TBD	Pinus resinosa	Red Pine	1.5m Hl.	B + B specimen
PS	TBD	Pinus strobus	White Pine	1.5m Hl.	B + B specimen
TC	TBD	Tsuga canadensis	Canadian Hemlock	1.5m Hl.	B + B specimen
TOTAL 26 CT CONIFEROUS TREES TO BE SELECTED FROM THE ABOVE VARIETIES BASED ON SITE CONDITIONS AFTER FINAL SUBGRADE					
POTTED SHRUBS 910 MARCH ROAD LEPINE CORP GJA INC.					
Code	Qty	Botanical Name	Common Name	Size	Condition
ac	TBD	Amelanchier canadensis	Serviceberry	80cm Hl.	Pot
cz	TBD	Cornus racemosa	Grey Dogwood	80cm Hl.	Pot
HK	125	Hypericum kalmianum	St. John's Wort	30cm Hl.	Pot
HP	350	Hypericum proflorum	Shrubby St. John's Wort	50cm Hl.	Pot
PIA	TBD	Potentilla fruticosa 'Abbotswood'	Abbotswood Potentilla	50cm Hl.	Pot
RA	TBD	Ribes aureum	Flowering Currant	60cm Hl.	Pot
RP	TBD	Rosa palustris	Swamp Rose	60cm Hl.	Pot
RT	TBD	Rhus typhina	Staghorn Sumac	30cm Hl.	Pot
SA	TBD	Symphoricarpos albus	Snowberry	60cm Hl.	Pot
SA	150	Spiraea alba	Meadowsweet	60cm Hl.	Pot
SE	TBD	Spiraea bumalda 'Dart's Red'	Dart's Red Spirea	40cm Hl.	Pot
Sh	TBD	Spiraea bumalda 'Anthony Waterer'	Anthony Waterer Spirea	50cm Hl.	Pot
vl	TBD	Viburnum lentago	Nannyberry	80cm Hl.	Pot
Jco	TBD	Juniperus chinensis 'Ontario Green'	Ontario Green Juniper	50 cm spr	Pot
JV	TBD	Juniperus virginiana	Eastern Red Cedar	1.5m Hl.	Pot
PM	25	Pinus mugo var. pumilio	Mugo Pine	30 cm spr	Pot
Tcm	TBD	Taxus cuspidata 'Monroie'	Emerald Spreader Yew	50cm spr	Pot
POTTED GROUNDCOVER 910 MARCH ROAD LEPINE CORP GJA INC.					
Code	Qty	Botanical Name	Common Name	Condition	
AL	TBD	Arcostaphylos ova uni	Bearberry	8cm Pot	
EC	TBD	Echinacea	Purple Coneflower	8cm Pot	
GM	TBD	Geranium macrorrhizum	Bigroot Geranium	8cm Pot	
GP	TBD	Geranium psilostemon 'Gerwat'	Rozania Geranium	8cm Pot	
PV	220	Panicum virgatum	Switch Grass	8cm Pot	



Drawing Remains the Property of Copyright Reserved by Gino J. Aiello Landscape Architect. Do Not Use or Reproduce Without Approval of Gino J. Aiello. NOT TO BE USED FOR CONSTRUCTION UNLESS INDICATED BY REVISION: "FOR LANDSCAPE CONSTRUCTION"

Contractor is Responsible for Verification of Site Conditions (Trees, Soil, etc.) and for the Selection of Plants. Plants to be used must be approved by the Landscape Architect. The Contractor shall provide a 1-year warranty on all plants from the date of final acceptance. The Contractor shall provide watering of all plants as required for proper establishment until the end of the warranty period. Refer to the Engineer's drawing for elevations / grading.

The Landscape Plan is to be read in conjunction with the grading, servicing, site and survey plan | Bare root material to be planted in season only | All plant material locations to be staked on site by the landscape contractor and checked by the landscape architect prior to planting | All trees to be preserved on or directly adjacent to the site will be protected | Plant material are to be installed a minimum of 3.0m away from any part of any hydro transformer, 3.0m corridor between a fire hydrant and the curb, a 2.5m radius beside or behind a fire hydrant, 2.0m from any servicing/utility line or structure |



1.4 per SPC 1.4	2023 07 28
1.0 FIRST SUBMISSION SPC 1.0	2023 03 29
0 REVIEW/COORDINATION	2023 03 21
# Revision	Date

LÉPINE

555 LEGGETT DRIVE, TOWER A, SUITE 206
OTTAWA ONTARIO, K2K 2K3
Phone: 613 991 9090 | Fax: 613 951 9095

GJA INC.
GINO J. AIELLO | LANDSCAPE ARCHITECT
GJAL.COM | 613 298 9350 | GJOGJAL.COM

910 MARCH ROAD MIXED USE DEVELOPMENT

Landscape Plan L1

Scale: 1:400