

LEGEND

EX6	--- PROPERTY LINE	--- PROPOSED STORM SEWER
4.010	--- DRAINAGE DIVIDE	--- PROPOSED SWALE
0.19	--- AREA IN Ha	--- PROPOSED PERFORATED SUBDRAIN
	○ RATIONAL METHOD RUNOFF COEFFICIENT	○ PROPOSED STORM MANHOLE
		□ PROPOSED CATCH BASIN
		□ PROPOSED CB 'T'
		→ EMERGENCY FLOW ROUTE
		▨ SURFACE PONDING AREA

NOT FOR CONSTRUCTION

TOPOGRAPHIC INFORMATION
 TOPOGRAPHIC INFORMATION PROVIDED BY STATEC GEOMATICS LTD.
 PROJ. NO. 161613685-111
 DATED JULY 10, 2017

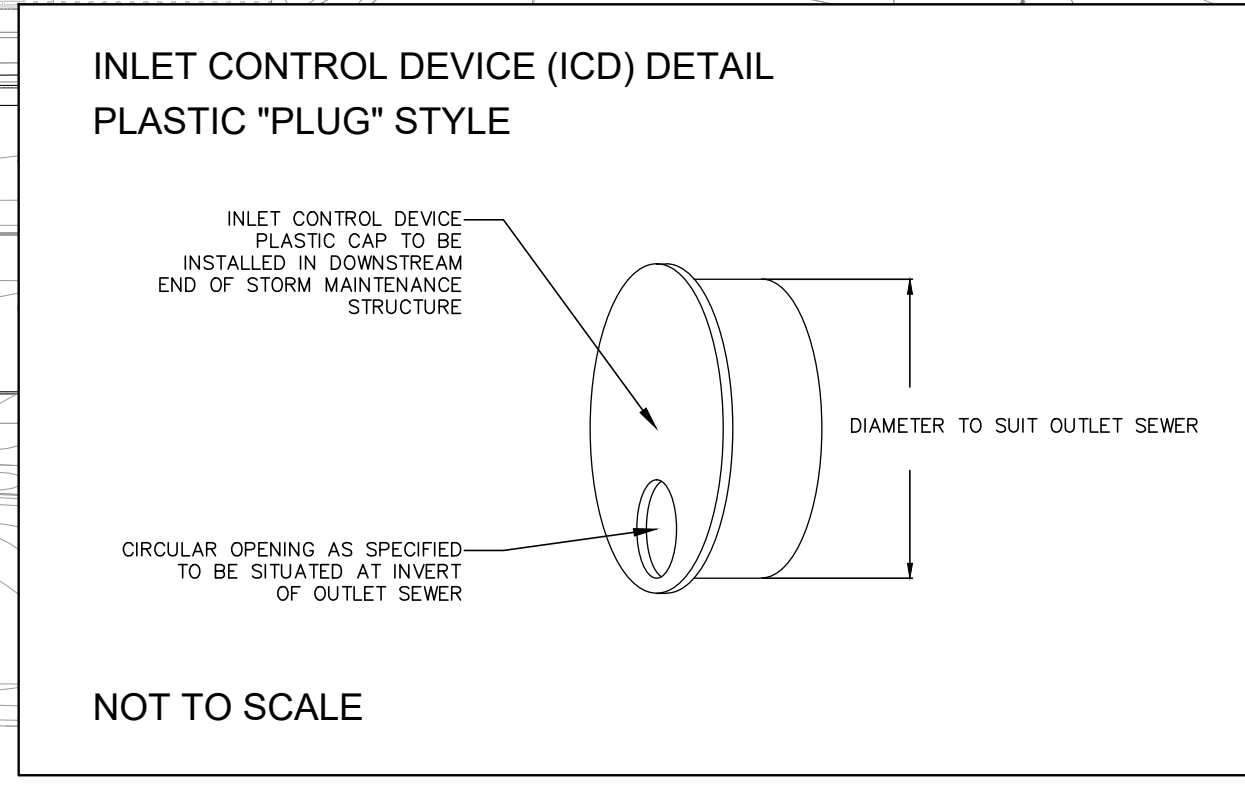
SITE PLAN INFORMATION
 SITE PLAN PROVIDED BY GREYSTONE
 PROJ. NO. 173300
 DATED JUNE 26, 2020

GEOTECHNICAL STUDY
 GEOTECHNICAL RECOMMENDATIONS PROVIDED BY PATERSON GROUP
 PROJ. NO. P65119-1
 DATED NOVEMBER 13, 2019

SITE SERVICING AND STORMWATER MANAGEMENT STUDY
 SERVICING AND STORMWATER MANAGEMENT RECOMMENDATIONS PROVIDED BY DSEL
 PROJ. NO. 17-962
 DATED JUNE 2020

BENCH MARK
 TOP OF SPINDLE OF FIRE HYDRANT LOCATED AT MARCH ROAD AND MAXWELL BRIDGE ROAD INTERSECTION
 ELEV=79.35

1	B.N.C.	20.06.26	ISSUED FOR MUNICIPAL REVIEW
No.	BY	YY.MM.DD	DESCRIPTION



PROJECT No. 17-962

STORMWATER MANAGEMENT PLAN
 910 MARCH ROAD

© DSEL

WEXFORD COMMERCIAL DEVELOPMENTS LTD. 6 Malabar Court
 Hamilton, Ontario, L9C 2B9
 Tel. (289) 680-7711

DSEL
 david schaeffer engineering ltd
 SMART SUBSISTEMS™

120 Iher Road Unit 103
 Stittsville, Ontario, K2S 1E9
 Tel. (613) 836-0856
 Fax. (613) 836-7183
 www.DSEL.ca

DRAWN BY:	B.N.C.	CHECKED BY:	A.D.F.	DRAWING NO.	SHEET NO.
DESIGNED BY:	B.N.C.	CHECKED BY:	A.D.F.	SWM-1	1 of 1
SCALE:	1:500	DATE:	JUNE 2020		