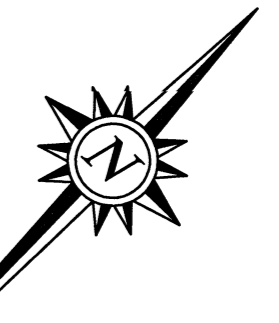
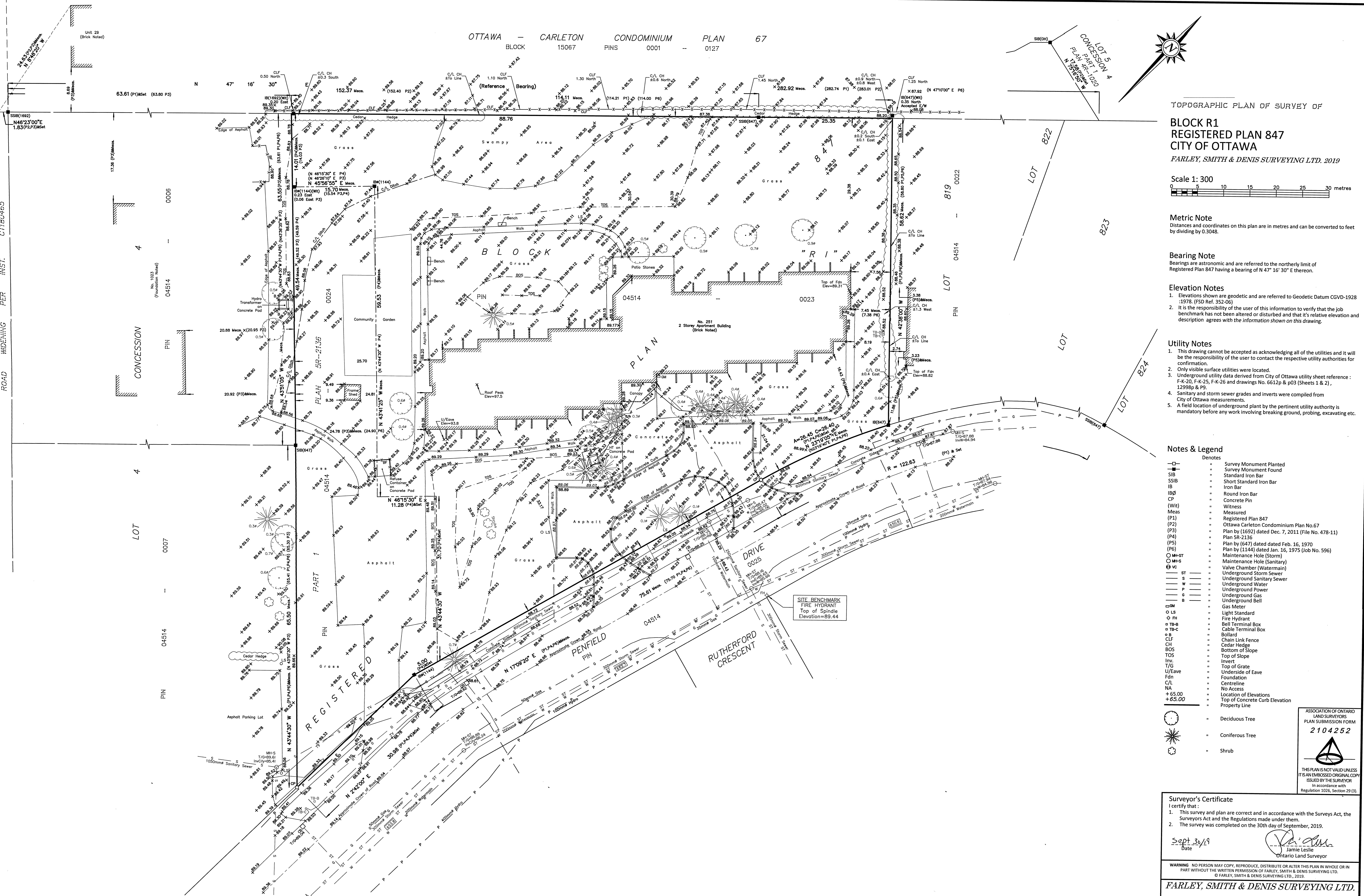


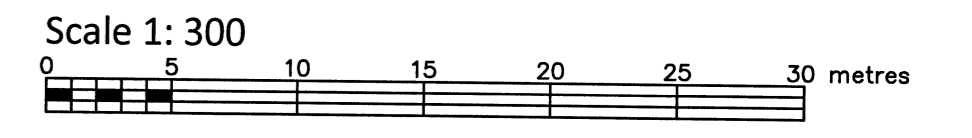
OTTAWA - CARLETON CONDOMINIUM PLAN 67



TOPOGRAPHIC PLAN OF SURVEY OF

BLOCK R1 REGISTERED PLAN 847 CITY OF OTTAWA

FARLEY, SMITH & DENIS SURVEYING LTD. 2019



Metric Note: Distances and coordinates on this plan are in metres and can be converted to feet by dividing by 0.3048.

Bearing Note: Bearings are astronomic and are referred to the northerly limit of Registered Plan 847 having a bearing of N 47° 16' 30" E thereon.

- Elevation Notes: 1. Elevations shown are geodetic and are referred to Geodetic Datum CGVD-1928:1978. (FSD Ref. 352-06) 2. It is the responsibility of the user of this information to verify that the job benchmark has not been altered or disturbed and that it's relative elevation and description agrees with the information shown on this drawing.

- Utility Notes: 1. This drawing cannot be accepted as acknowledging all of the utilities and it will be the responsibility of the user to contact the respective utility authorities for confirmation. 2. Only visible surface utilities were located. 3. Underground utility data derived from City of Ottawa utility sheet reference: F-K-20, F-K-25, F-K-26 and drawings No. 6612p & p03 (Sheets 1 & 2), 12998p & p9. 4. Sanitary and storm sewer grades and inverts were compiled from City of Ottawa measurements. 5. A field location of underground plant by the pertinent utility authority is mandatory before any work involving breaking ground, probing, excavating etc.

Notes & Legend table with symbols and descriptions for various survey features like monuments, bearings, elevations, and utilities.

ASSOCIATION OF ONTARIO LAND SURVEYORS PLAN SUBMISSION FORM 2104252. Includes a logo and a statement: 'THIS PLAN IS NOT VALID UNLESS IT IS AN EMBOSSED ORIGINAL COPY ISSUED BY THE SURVEYOR In accordance with Regulation 1026, Section 29 (3).'

Surveyor's Certificate: I certify that: 1. This survey and plan are correct and in accordance with the Surveys Act, the Surveyors Act and the Regulations made under them. 2. The survey was completed on the 30th day of September, 2019. Date: Sept 30, 19. Signature: Jamie Leslie, Ontario Land Surveyor.

WARNING: NO PERSON MAY COPY, REPRODUCE, DISTRIBUTE OR ALTER THIS PLAN IN WHOLE OR IN PART WITHOUT THE WRITTEN PERMISSION OF FARLEY, SMITH & DENIS SURVEYING LTD. © FARLEY, SMITH & DENIS SURVEYING LTD., 2019.

FARLEY, SMITH & DENIS SURVEYING LTD. ONTARIO LAND SURVEYORS CANADA LAND SURVEYORS

190 COLONNADE ROAD, OTTAWA, ONTARIO K2E 7J5 TEL (613) 727-8226 FAX (613) 727-1826