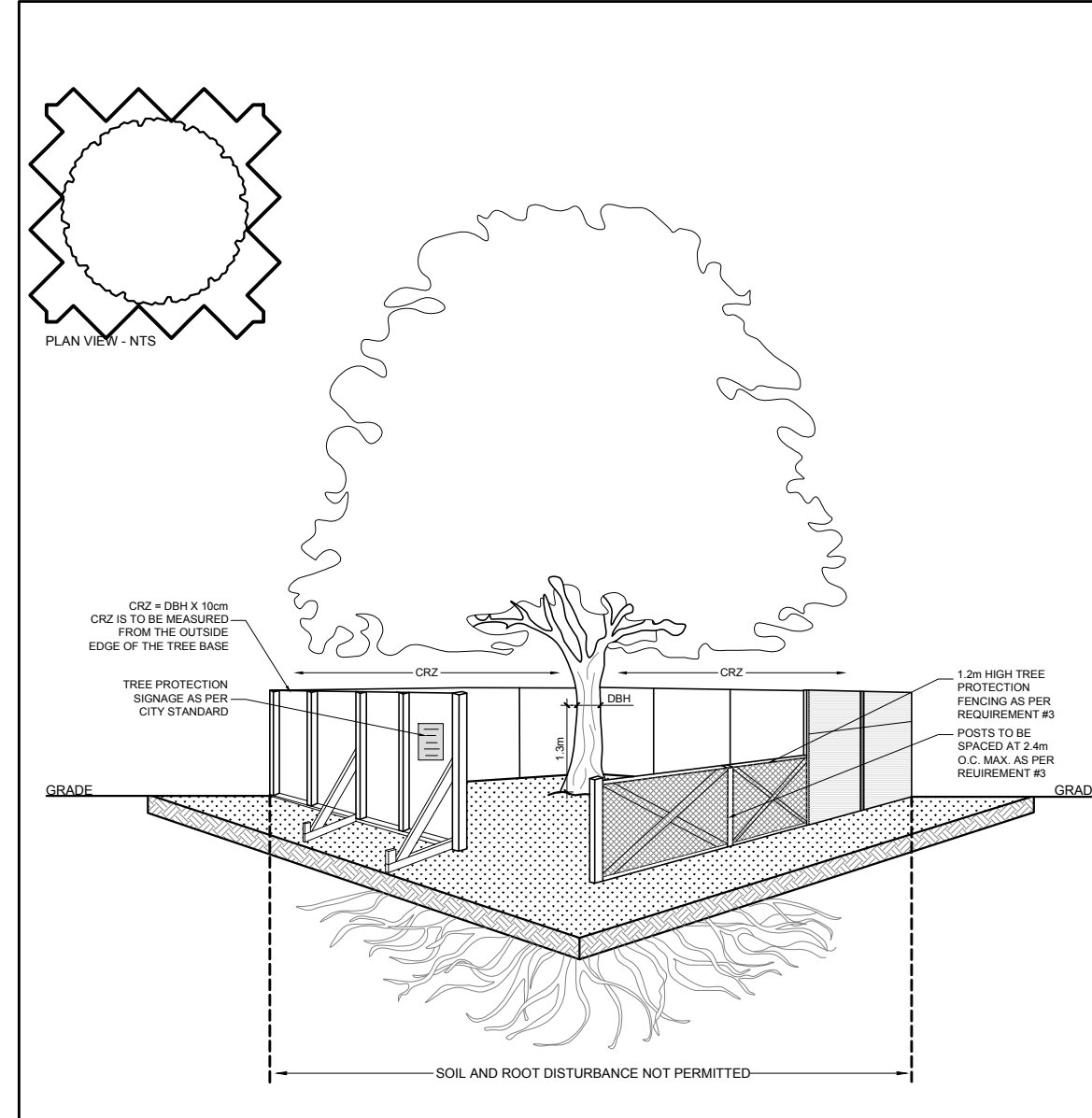


DRAWING FRAME: 760mm x 534mm City of Ottawa 2008



**TREE PROTECTION REQUIREMENTS:**

- PRIOR TO ANY WORK ACTIVITY WITHIN THE CRITICAL ROOT ZONE (CRZ = 1.8x DIAMETER OF A TREE), TREE PROTECTION FENCING MUST BE INSTALLED SURROUNDING THE CRITICAL ROOT ZONE AND REMAIN IN PLACE UNTIL THE WORK IS COMPLETE.
- UNLESS PLANS ARE APPROVED BY CITY FORESTRY STAFF, FOR WORK WITHIN THE CRZ, DO NOT PLACE ANY MATERIAL OR EQUIPMENT INCLUDING OUTHOUSES.
  - DO NOT ATTACH ANY SIGNS, NOTICES OR POSTERS TO ANY TREE.
  - DO NOT RAISE OR LOWER THE EXISTING GRADE, TUNNEL OR BORE WHEN DIGGING.
  - DO NOT DAMAGE THE ROOT SYSTEM, TRUNK, OR BUNCHES OF ANY TREE.
  - ENSURE THAT EXHAUST PIPES FROM ALL EQUIPMENT ARE NOT DIRECTED TOWARD ANY TREE CANOPY.
  - DO NOT EXTEND HARD SURFACE OR SIGNIFICANTLY CHANGE LANDSCAPING.
- TREE PROTECTION FENCING MUST BE AT LEAST 1.2m IN HEIGHT, AND BE CONSTRUCTED OF BRIDG OR FRAMED MATERIALS (E.G. METALLOID-STEEL, PLYWOOD HOARDING, OR SNOW FENCE ON A 2"x4" WOOD FRAME) WITH POSTS 2.4m APART. SUCH THAT THE FENCE LOCATION CANNOT BE ALTERED. ALL SUPPORTS AND BRACING MUST BE PLACED OUTSIDE OF THE CRZ, AND INSTALLATION MUST MINIMIZE DAMAGE TO EXISTING ROOTS. (SEE DETAIL)
- THE LOCATION OF THE TREE PROTECTION FENCING MUST BE DETERMINED BY AN ARBORIST AND DETAILED ON ANY ASSOCIATED PLANS FOR THE SITE (E.G. TREE CONSERVATION REPORT, TREE DISCLOSURE REPORT, ETC.). THE PLAN AND CONSTRUCTED FENCING MUST BE APPROVED BY CITY FORESTRY STAFF PRIOR TO THE COMMENCEMENT OF WORK.
- IF THE FENCED TREE PROTECTION AREA MUST BE REDUCED TO FACILITATE CONSTRUCTION, MITIGATION MEASURES MUST BE PRESCRIBED BY AN ARBORIST AND APPROVED BY CITY FORESTRY STAFF. THESE MAY INCLUDE THE PLACEMENT OF PLYWOOD, WOOD CHIPS, OR STEEL PLATING OVER THE ROOTS FOR PROTECTION OR THE PROPER PRUNING AND CARE OF ROOTS WHERE ENCOUNTERED.

**BY-LAWS:**

ALL CITY-OWNED TREES ARE PROTECTED UNDER THE MUNICIPAL TREES AND NATURAL AREAS PROTECTION BY-LAW (2006-276) WITHIN THE URBAN AREA. PRIVATELY OWNED TREES GREATER THAN 500mm IN DIAMETER ON LOTS 1 HECTARE IN SIZE OR LESS, AND TREES GREATER THAN 100m IN DIAMETER ON LOTS GREATER THAN 1 HECTARE, ARE PROTECTED UNDER THE URBAN TREE CONSERVATION BY-LAW (2008-200).

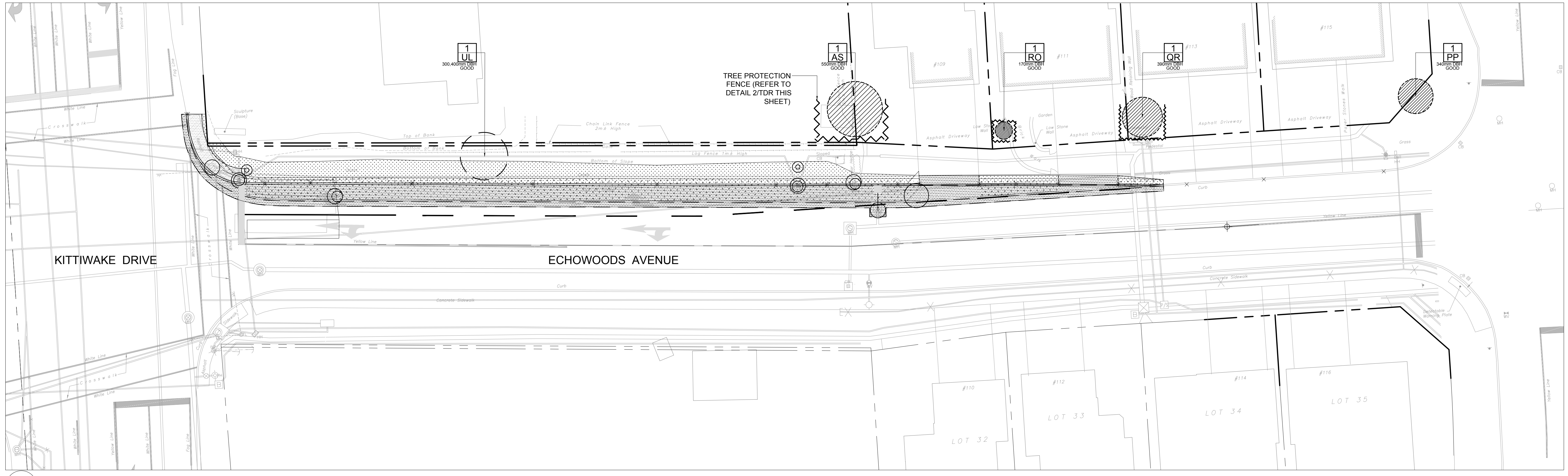
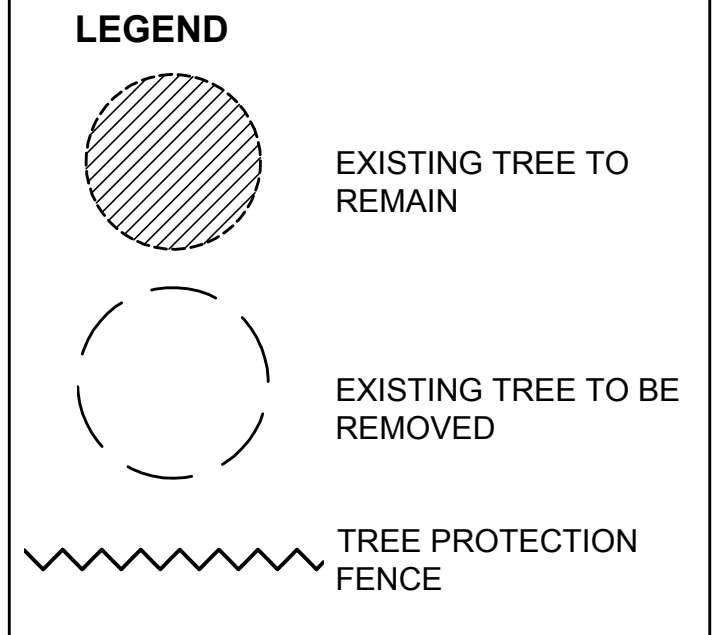
**2 TREE PROTECTION FENCE**  
TDR SCALE: NTS

**GENERAL NOTES:**

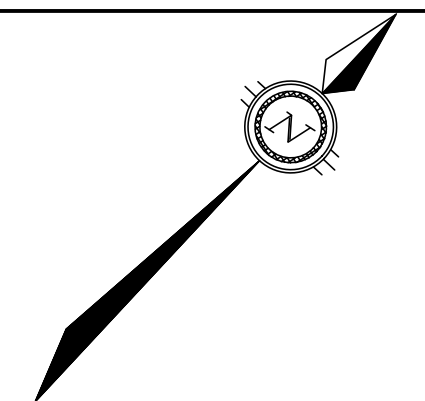
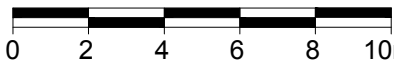
- It is the responsibility of the appropriate contractor or official to report any errors, omissions or discrepancies on this plan with actual site conditions to the Landscape Architect before proceeding with construction.
- The contractor is to notify all utility companies and authorities prior to any excavation and ascertain locations of underground services.
- The contractor is to reinstaate all areas and items damaged as a result of construction activity.
- The contractor is to comply with all pertinent codes and by-laws.
- The contractor is to maintain a positive surface run-off throughout the entire construction period.
- The Landscape Architect is not responsible for subsurface conditions.
- The contractor is to identify all existing trees to remain on site with the Landscape Architect prior to construction.

**EXISTING TREE LIST**

KEY	BOTANICAL NAME	COMMON NAME	SIZE	CRITICAL ROOT ZONE	OWNERSHIP	CONDITION	ACTION
AS	Acer saccharum	Sugar Maple	550mm DBH	5500mm	109 Echowoods	GOOD	TO REMAIN
PP	Picea pungens	Colorado Spruce	340mm DBH	3400mm	115 Echowoods & City of Ottawa	GOOD	TO REMAIN
QR	Quercus rubra	Red Oak	390mm DBH	3900mm	113 Echowoods	GOOD	TO REMAIN
RO	Quercus rubra	Red Oak	170mm DBH	1700mm	111 Echowoods	GOOD	TO REMAIN
UL	Ulmus spp.	Elm	300,400mm DBH	4000mm	City of Ottawa	GOOD	TO BE REMOVED



**1 TREE DISCLOSURE REPORT**  
TDR SCALE 1:200



**ROAD MODIFICATIONS**  
**ECHOWOODS AVENUE**

**TREE DISCLOSURE REPORT**

Stephen Willis, MCI, P, RPP  
General Manger

**JAMES B. LENNOX & ASSOCIATES INC.**  
LANDSCAPE ARCHITECTS  
1312 CARLING AVE. OTTAWA, ONTARIO K2H 5A5  
Tel: (416) 722-5168 Fax: (416) 343-3942

Contract No. OTT-00258780-A0 Dwg. No. TDR  
Sheet No. 1 of 1  
Asset No. --  
Asset Group ISD  
Des. -- Chk'd. JL  
Dwn. ML Chk'd. JL  
Utility Circ. No. -- Index No. --  
Const. Inspector

**NOTE:** The location of utilities is approximate only, the exact location should be determined by consulting the municipal authorities and utility companies concerned. The contractor shall prove the location of utilities and shall be responsible for adequate protection from damage.

NO.	Description	By	Date (dd/mm/yy)
1	ISSUED FOR DISCUSSION AND REVIEW	ML	04/28/22