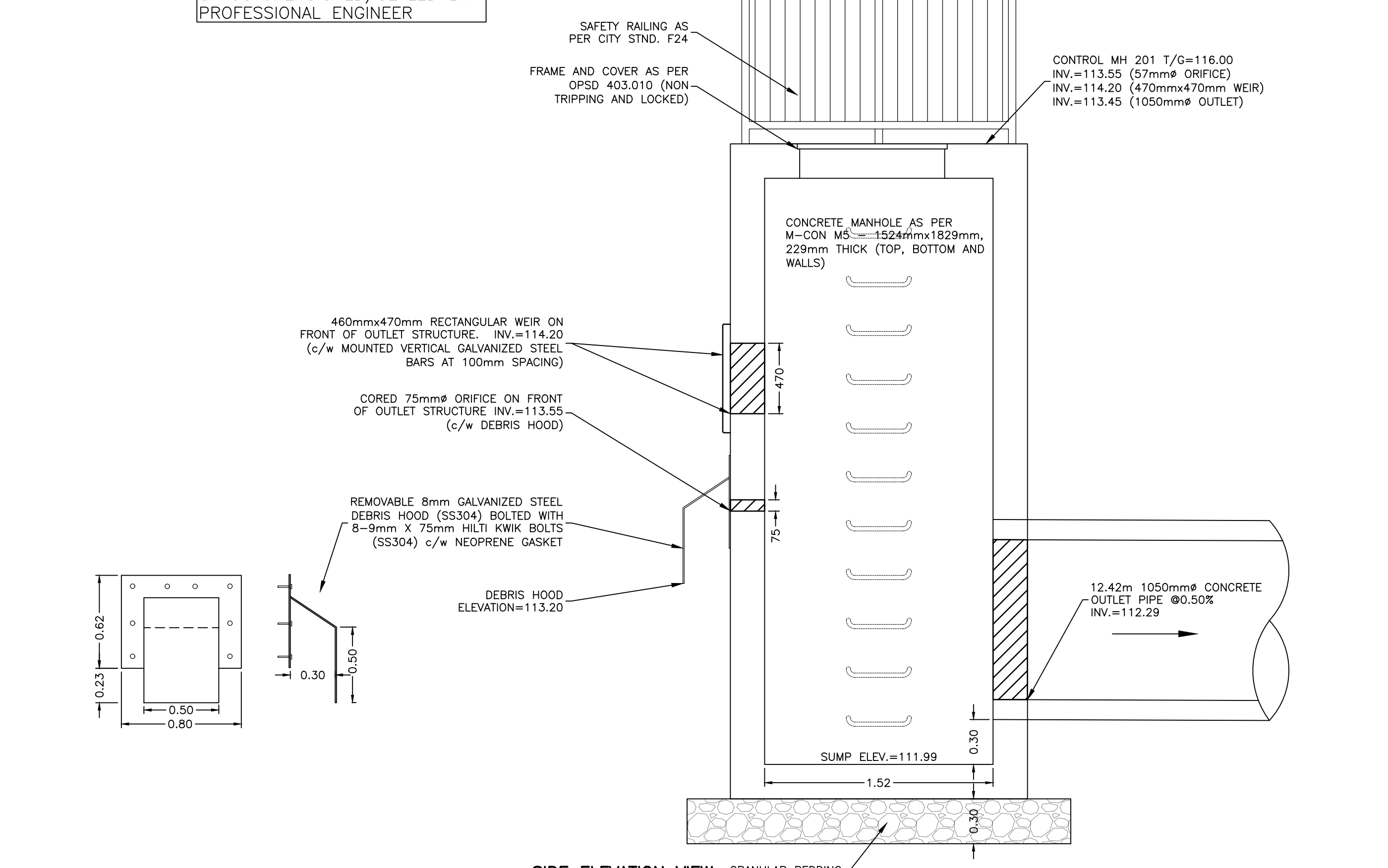


GRATE PLAN VIEW

FRONT ELEVATION VIEW

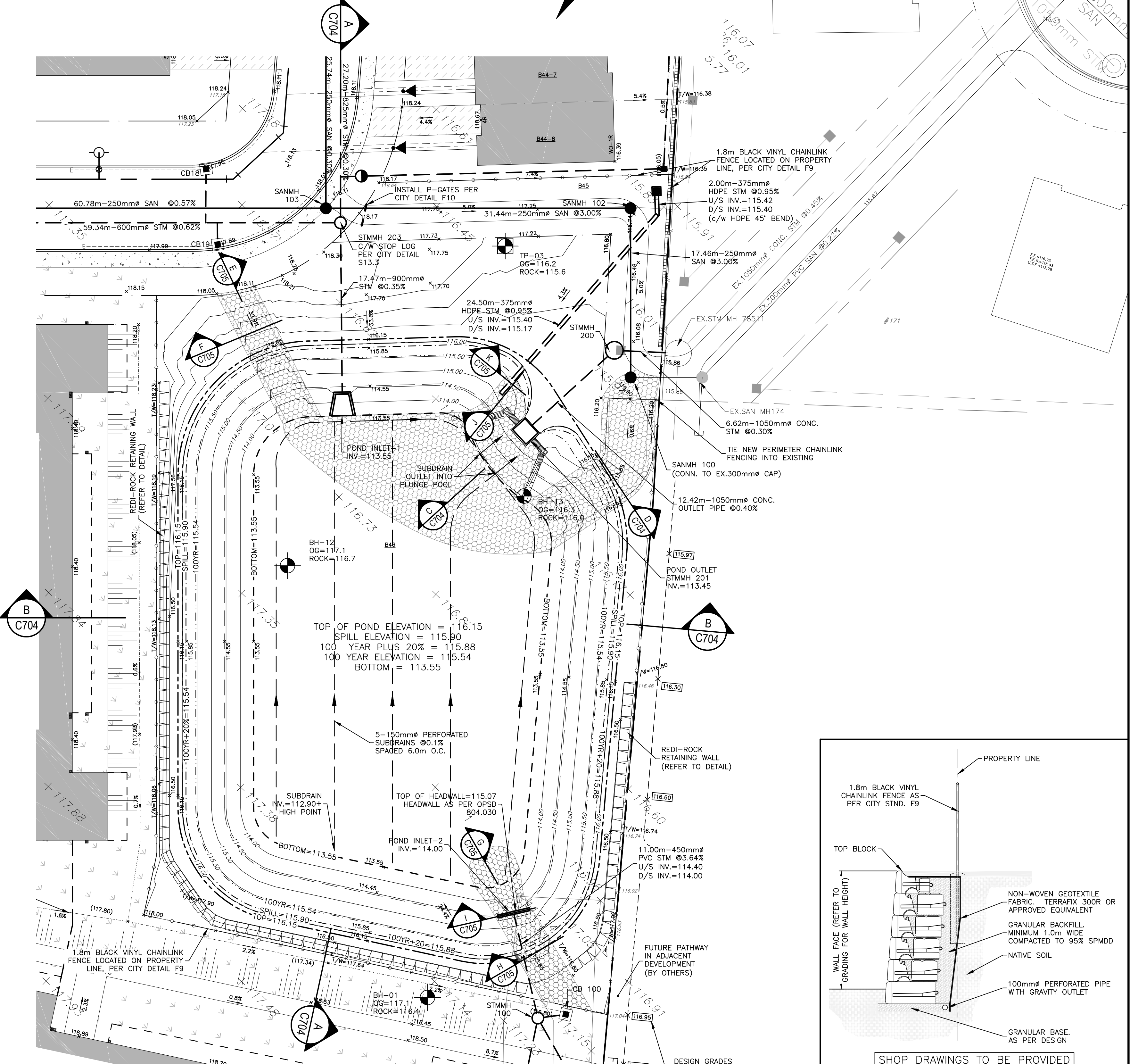
CONTRACTOR TO SUBMIT SHOP DRAWINGS OF CONCRETE OUTLET STRUCTURE SIGNED/SEALED BY PROFESSIONAL ENGINEER



SIDE ELEVATION VIEW

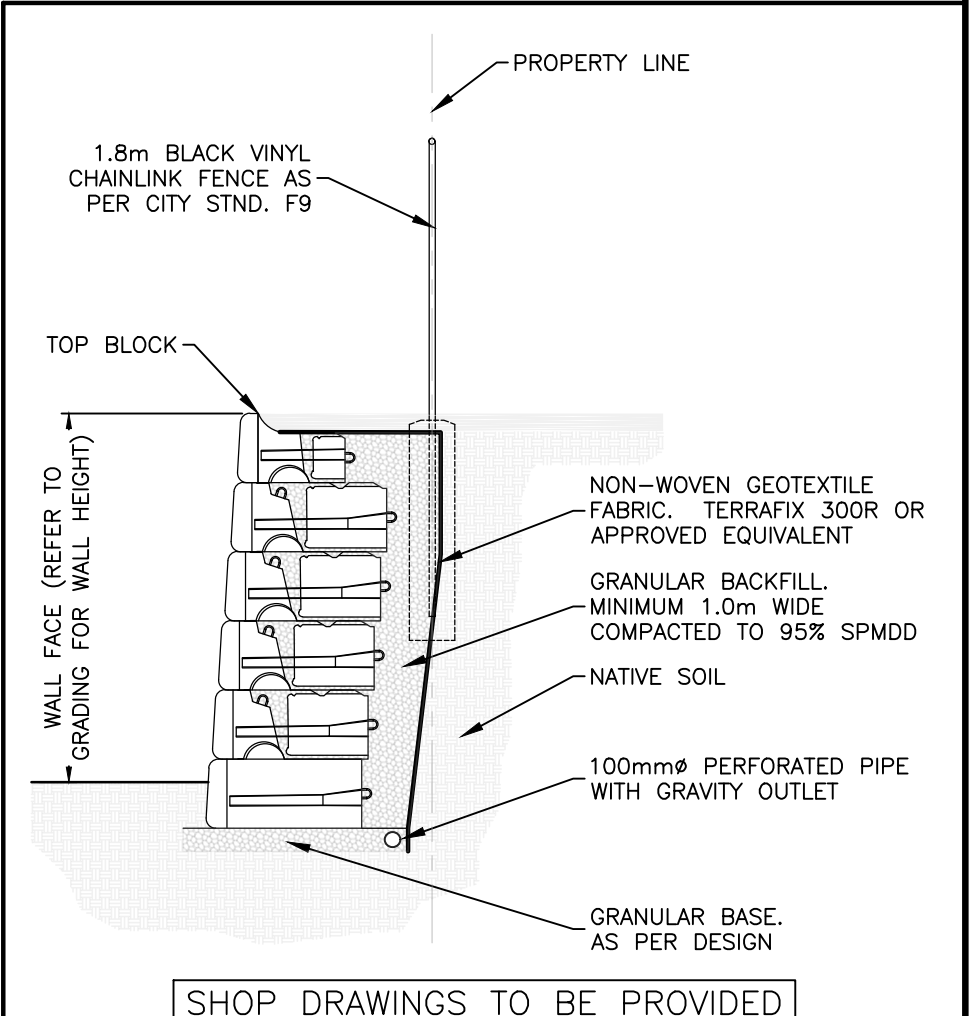
CONTROL MANHOLE 201 DETAILS

SCALE: 1:25



PLAN VIEW

SCALE: 1:250



TYPICAL RETAINING WALL

SCALE: 1:50

**CAUTION**  
THE POSITION OF ALL POLE LINES, CONDUITS, WATERMANS, SEWERS AND OTHER UNDERGROUND AND OVERGROUND UTILITIES AND STRUCTURES IS NOT NECESSARILY SHOWN ON THE CONTRACT DRAWINGS, AND WHERE SHOWN, THE ACCURACY OF THE POSITION OF SUCH UTILITIES AND STRUCTURES IS NOT GUARANTEED. BEFORE STARTING WORK, DETERMINE THE EXACT LOCATION OF ALL SUCH UTILITIES AND STRUCTURES AND ASSUME ALL LIABILITY FOR DAMAGE TO THEM.

**JOB BENCH MARK** JBM ▲  
TOP OF HEAD OF MAGNETIC NAIL SET IN SIDE OF CONCRETE SIGN  
BASE 0.2± ABOVE GRADE ELEVATION=120.77  
NORTHING=5014575.29 EASTING=349007.23

**TOPOGRAPHIC INFORMATION**  
PART OF LOT 12, CONCESSION 12, GEOGRAPHIC TOWNSHIP OF GOULBOURN, CITY OF OTTAWA.  
TOPOGRAPHIC INFORMATION PROVIDED BY FAIRHALL MOFFATT & WOODLAND LIMITED O.L.S (P3862) SURVEY DATED JANUARY 14, 2020.  
SITE GRID SYSTEM NTM NAD 83, ZONE 9.

REV	REVISION DESCRIPTION	DATE	BY	APPD
1	ISSUED FOR APPROVAL	05/12/22	SAB	BMT

SCALE: 0 2m 4m 10m  
HORIZONTAL: 1:250  
VERTICAL: 1:250

DESIGNED BY: J.L. FITZPATRICK, LICENSED PROFESSIONAL ENGINEER, PROVINCE OF ONTARIO, 2022-05-12

REVIEWED BY: B.M. THOMAS, LICENSED PROFESSIONAL ENGINEER, PROVINCE OF ONTARIO, 2022-05-12

**LATITUDE HOMES**  
1202 CARP ROAD  
STITTSVILLE, ON. K2S 1B9

exp. Services Inc.  
1-813-688-1899 | 1-613-225-7330  
200 DUNDAS ST. W. UNIT 100  
OTTAWA, ON K2B 8R6  
Canada  
www.exp.com

• BUILDINGS • EARTH & ENVIRONMENT • ENERGY •  
• INDUSTRIAL • INFRASTRUCTURE • SUSTAINABILITY •

PROJECT: HAZELDEAN HORIZONS  
6171 HAZELDEAN ROAD  
OTTAWA, ONTARIO.

PROJECT NO: 258780  
SURVEY: 238800-FMW  
DATE: 24/07/20  
DRAWING NO: C703

DETAIL SHEET 4  
STORMWATER MANAGEMENT FACILITY