

METRIC
DISTANCES AND COORDINATES SHOWN ON THIS PLAN ARE IN METRES
AND CAN BE CONVERTED TO FEET BY DIVING BY 0.3048

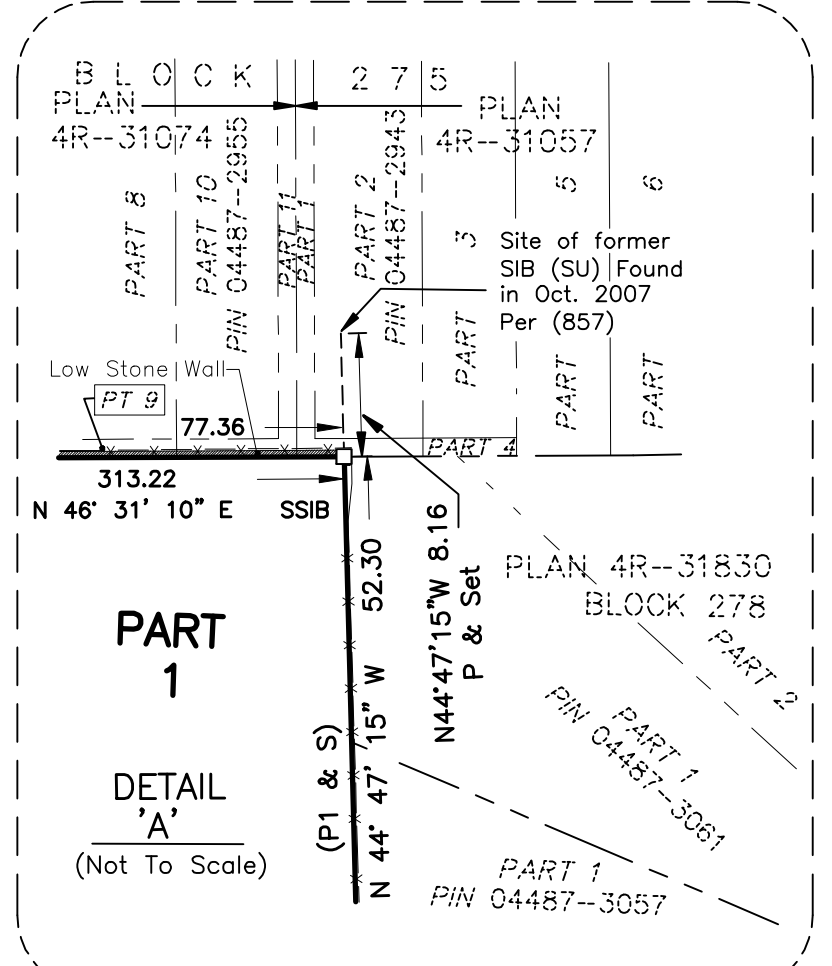
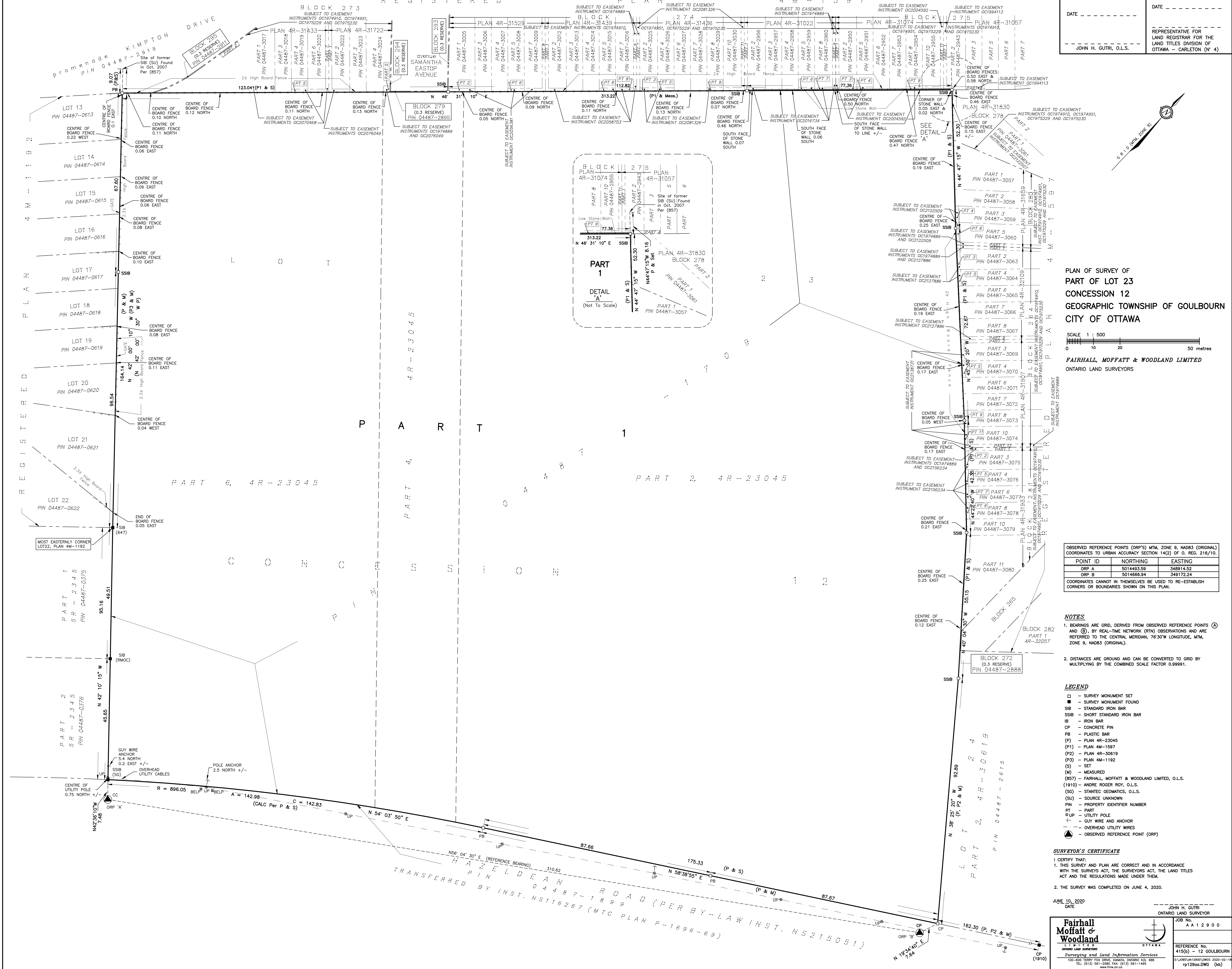
SCHEDULE		
PART	LOT	CONCESSION
1	PART OF 23	12
		ALL OF 04487-1709

I REQUIRE THIS PLAN TO BE DEPOSITED UNDER THE LAND TITLES ACT.
DATE _____

JOHN H. GUTRI, O.L.S.

PLAN 4R-
RECEIVED AND DEPOSITED
DATE _____

REPRESENTATIVE FOR THE LAND TITLES DIVISION OF OTTAWA - CARLETON (N 4)



PLAN OF SURVEY OF
PART OF LOT 23
CONCESSION 12
GEOGRAPHIC TOWNSHIP OF GOULBOURN
CITY OF OTTAWA

SCALE 1 : 500
0 10 20 30 40 50 metres

FAIRHALL, MOFFATT & WOODLAND LIMITED
ONTARIO LAND SURVEYORS

OBSERVED REFERENCE POINTS (ORP'S) NAD83, ZONE 9, NAD83 (ORIGINAL) COORDINATES TO URBAN ACCURACY SECTION 14(2) OF O. REG. 216/10.		
POINT ID	NORTHING	EASTING
ORP A	348748.52	501466.94
ORP B	501466.94	348748.52

COORDINATES CANNOT IN THEMSELVES BE USED TO RE-ESTABLISH CORNERS OR BOUNDARIES SHOWN ON THIS PLAN.

NOTES

- BEARINGS ARE GRID, DERIVED FROM OBSERVED REFERENCE POINTS (ORP) AND BY REAL-TIME NETWORK (RTN) OBSERVATIONS AND ARE REFERRED TO THE CENTRAL MERIDIAN, 76°30'W LONGITUDE, NAD83 (ORIGINAL).
- DISTANCES ARE GROUND AND CAN BE CONVERTED TO GRID BY MULTIPLYING BY THE COMBINED SCALE FACTOR 0.99991.

- LEGEND**
- - SURVEY MONUMENT SET
 - - SURVEY MONUMENT FOUND
 - SIB - STANDARD IRON BAR
 - SSIB - SHORT STANDARD IRON BAR
 - IB - IRON BAR
 - CP - CONCRETE PIN
 - PB - PLASTIC BAR
 - (P) - PLAN 4R-23045
 - (P1) - PLAN 4M-1597
 - (P2) - PLAN 4R-30619
 - (P3) - PLAN 4M-1192
 - (S) - SET
 - (M) - MEASURED
 - (857) - FAIRHALL, MOFFATT & WOODLAND LIMITED, O.L.S.
 - (1103) - ANDRE ROGER ROY, O.L.S.
 - (S0) - STATICS GEOMATICS, O.L.S.
 - (SU) - SOURCE UNKNOWN
 - PN - PROPERTY IDENTIFIER NUMBER
 - PT - PART
 - UP - UTILITY POLE
 - UP - GUY WIRE AND ANCHOR
 - UP - OVERHEAD UTILITY WIRES
 - ORP - OBSERVED REFERENCE POINT (ORP)

SURVEYOR'S CERTIFICATE

I CERTIFY THAT:
1. THIS SURVEY AND PLAN ARE CORRECT AND IN ACCORDANCE WITH THE SURVEYS ACT, THE SURVEYORS ACT, THE LAND TITLES ACT AND THE REGULATIONS MADE UNDER THEM.
2. THE SURVEY WAS COMPLETED ON JUNE 4, 2020.

JUNE 10, 2020
DATE

JOHN H. GUTRI
ONTARIO LAND SURVEYOR

Fairhall Moffatt & Woodland
Surveying and Land Information Services
100-500 BERRY ST. SUITE 2000, OTTAWA, ONTARIO K2J 5K8
TEL: (613) 581-2280 FAX: (613) 581-1465
www.fmw.com

JOB NO: A A 1 2 9 0 0
REFERENCE No: 415(b) - 12 GOULBOURN
S:\5885\415(b)\12 GOULBOURN 2020-03-19
p1296a.DWG (N)