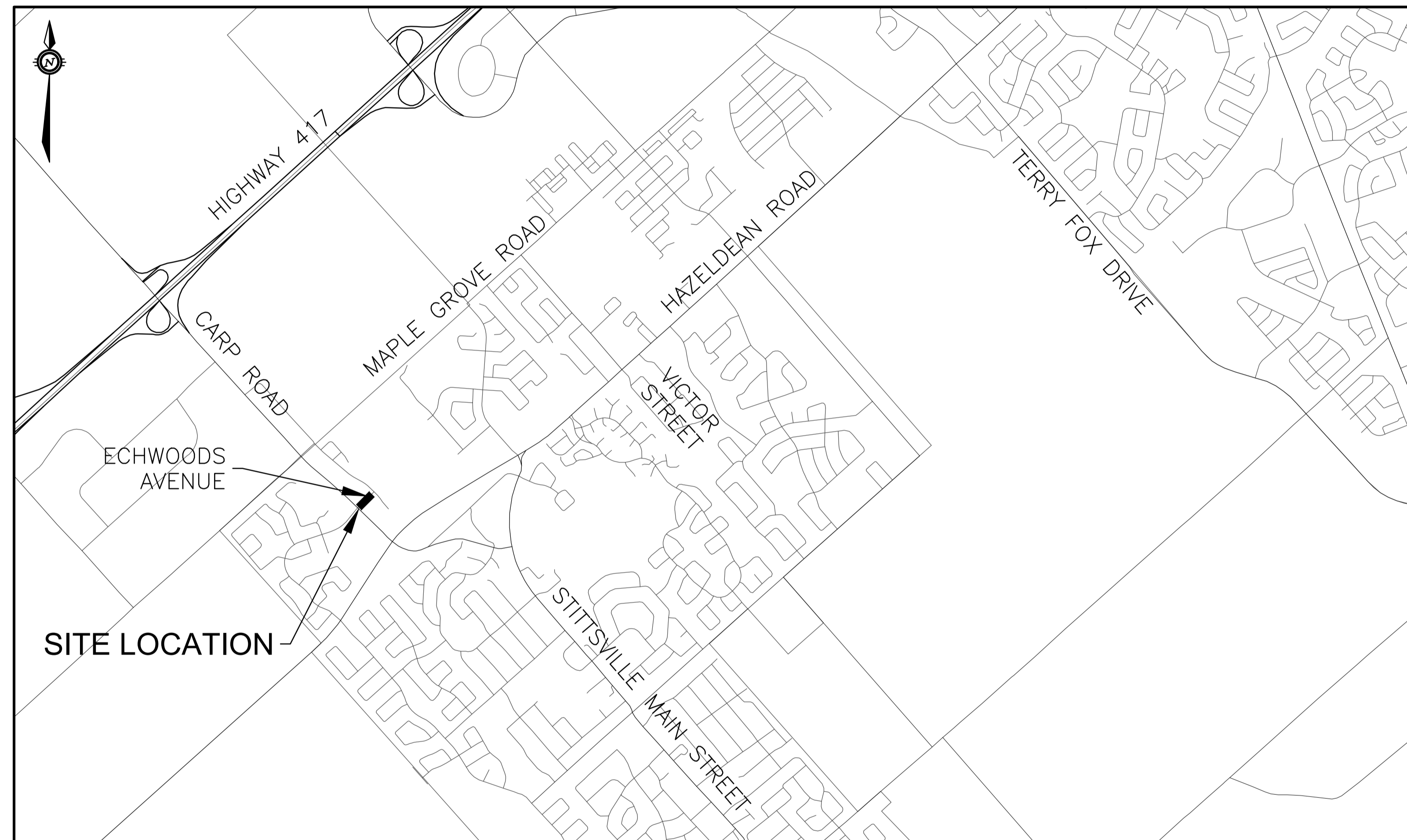




PLANNING, INFRASTRUCTURE AND ECONOMIC DEVELOPMENT



Stephen Willis, MCIP, RPP
General Manager

exp Services Inc.
t: +1.613.688.1899 | f: +1.613.225.7337
2650 Queensview Drive, Suite 100
Ottawa, ON K2B 8H6
Canada

www.exp.com



• BUILDINGS • EARTH & ENVIRONMENT • ENERGY •
• INDUSTRIAL • INFRASTRUCTURE • SUSTAINABILITY •

ROADWAY MODIFICATIONS ECHOWOODS AVENUE

ISSUED FOR REVIEW
OCTOBER 08, 2021

Vertical text along the left margin, likely a project number or reference code.

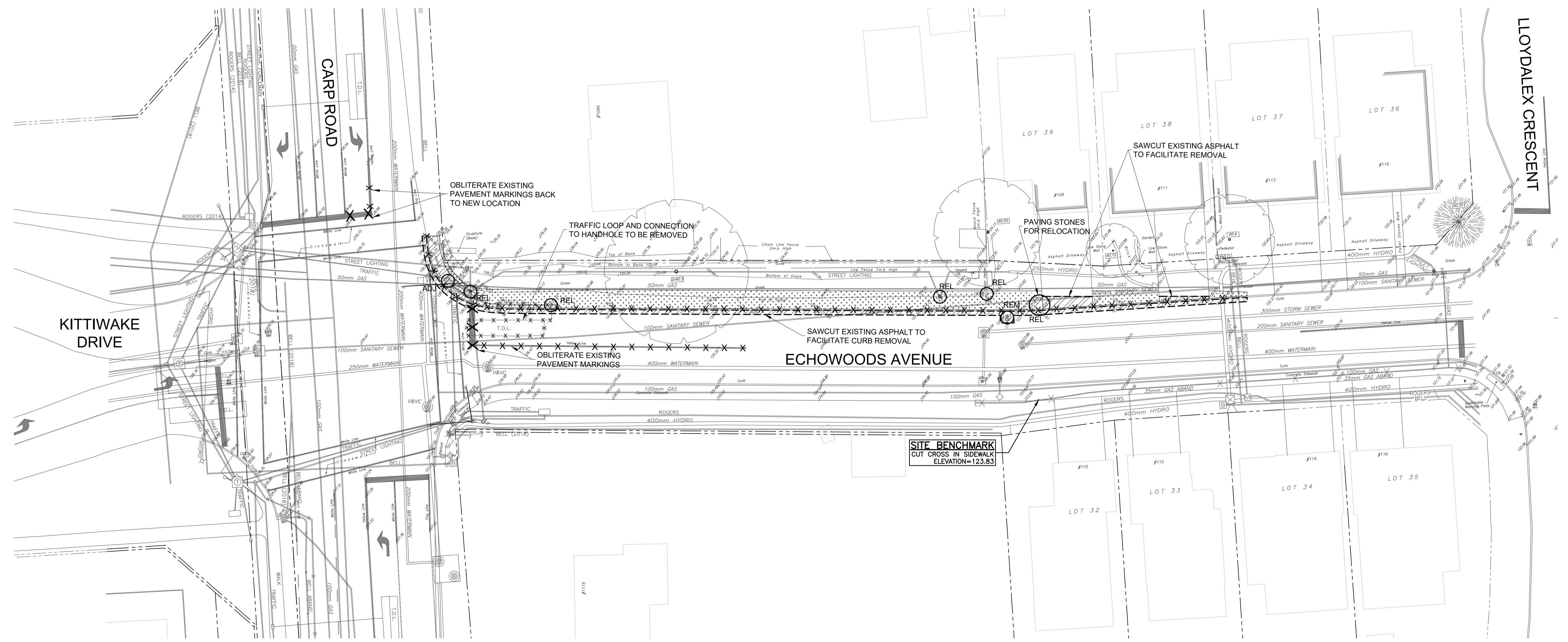
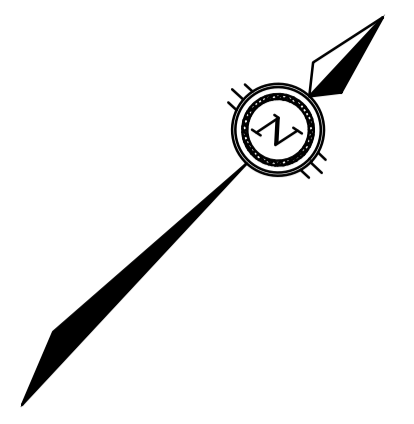
ROAD MODIFICATIONS ECHOWOODS AVENUE



Contract No. OTT-00258780-A0	Dwg. No. 002
Sheet No. 3 of 7	
Asset No. ---	
Asset Group ISD	
Des. ---	Chk'd. BMT
Dwn. SAB	Chk'd. BMT
Utility Circ. No. ---	Index No.
Const. Inspector	
Scale: 1:250 Horizontal	

NOTE: The location of utilities is approximate only, the exact location should be determined by consulting the municipal authorities and utility companies concerned. The contractor shall prove the location of utilities and shall be responsible for adequate protection from damage.

NO.	Description	By	Date (dd/mm/yy)
1	ISSUED FOR REVIEW	BMT	08/10/21



File Name: I:\projects\2021\21000\Echowoods_Avenue\21000_SitePlan_20210624.dwg
 User: jason.100001
 Date: 2021/06/24 2:28:15 PM
 Plot: 21000_SitePlan_20210624.dwg
 Plot Date: 2021/06/24 2:28:15 PM
 Plot Size: 21000_SitePlan_20210624.dwg
 Plot Scale: 1:250 (Horizontal)

DRAWING FRAME: 786mm x 554mm City of Ottawa 2008

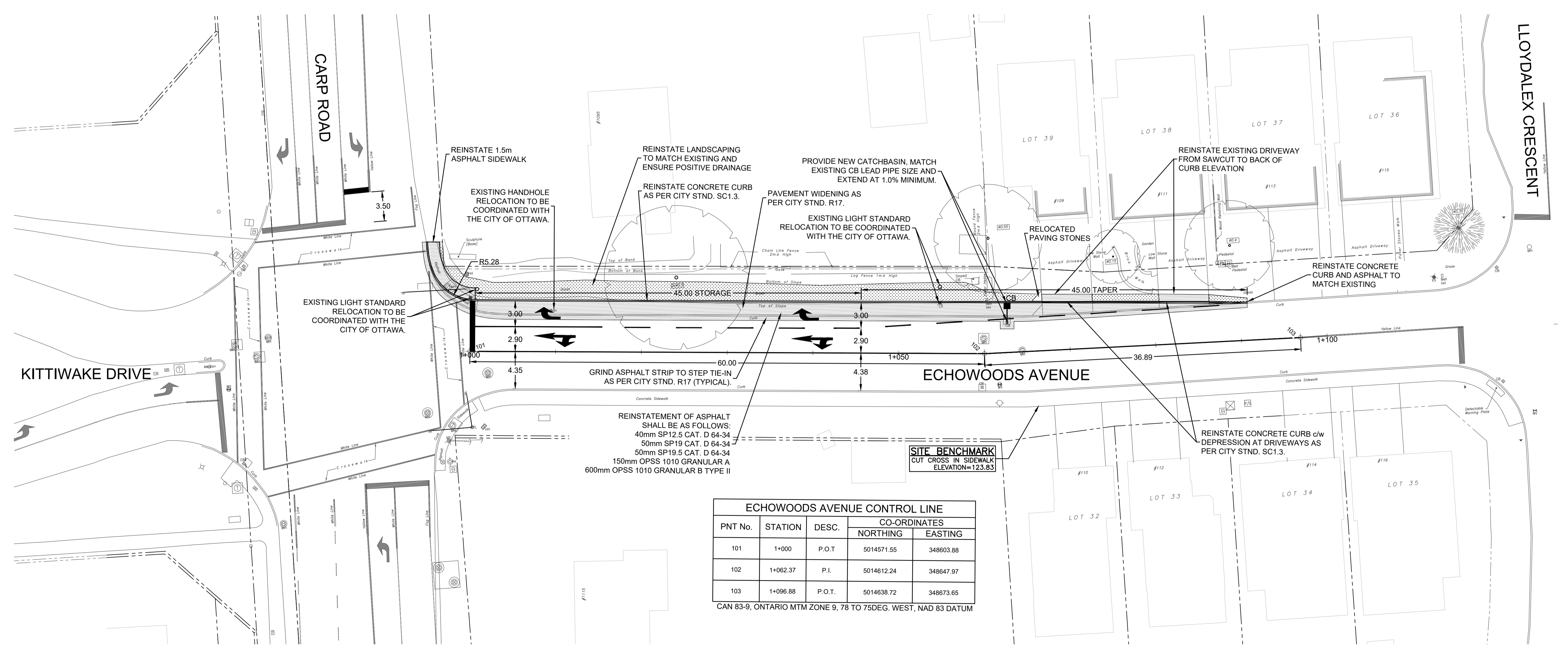
ROAD MODIFICATIONS ECHOWOODS AVENUE



Contract No. OTT-00258780-A0		Dwg. No. 003	
Sheet No. 4 of 7			
Asset No. --			
Asset Group ISD			
Des. -- Chkd. BMT			
Dwn. SAB Chkd. BMT			
Utility Circ. No. -- Index No. --			
Const. Inspector --			
Scale: 0 2m 4m 10m HORIZONTAL 1:250			

NOTE: The location of utilities is approximate only, the exact location should be determined by consulting the municipal authorities and utility companies concerned. The contractor shall prove the location of utilities and shall be responsible for adequate protection from damage.

NO.	Description	By	Date (dd/mm/yy)
1	ISSUED FOR REVIEW	BMT	08/10/21



ECHOWOODS AVENUE CONTROL LINE				
PNT No.	STATION	DESC.	CO-ORDINATES	
			NORTHING	EASTING
101	1+000	P.O.T.	5014571.55	348603.88
102	1+062.37	P.I.	5014612.24	348647.97
103	1+096.88	P.O.T.	5014638.72	348673.65

CAN 83-9, ONTARIO MTM ZONE 9, 78 TO 75DEG. WEST, NAD 83 DATUM

File Name: I:\projects\2021\21001\21001.dwg
 User: bmt
 Date: 2021/10/08 10:00:00 AM
 Plot Date: 2021/10/08 10:00:00 AM
 Plot Scale: 1:250
 Plot Size: 760mm x 554mm
 Plot Orientation: Landscape
 Plot Color: Black
 Plot Lineweight: 0.5mm
 Plot Font: Arial
 Plot Title: ROAD MODIFICATIONS ECHOWOODS AVENUE
 Plot Sheet: 4 of 7
 Plot Date: 2021/10/08 10:00:00 AM
 Plot User: bmt

ROAD MODIFICATIONS ECHOWOODS AVENUE



Contract No. OTT-00258780-A0 Dwg. No. 004
Sheet No. 5 of 7

Asset No. --

Asset Group ISD

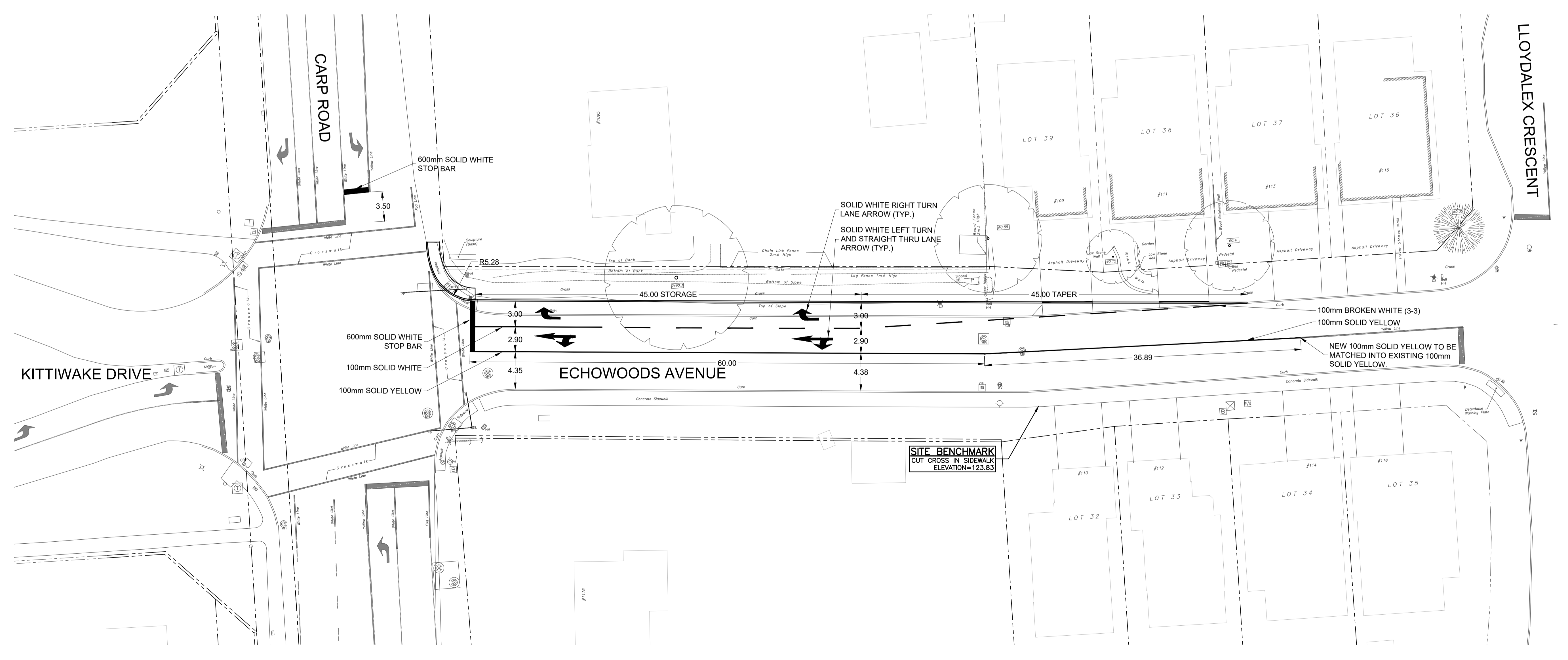
Stephen Willis, MCIP, RPP
General Manager

Des.	Chk'd.
--	BMT
Dwn.	Chk'd.
SAB	BMT
Utility Circ. No.	Index No.
--	--
Const. Inspector	



NOTE: The location of utilities is approximate only. The exact location should be determined by consulting the municipal authorities and utility companies concerned. The contractor shall prove the location of utilities and shall be responsible for adequate protection from damage.

NO.	Description	By	Date (dd/mm/yy)
1	ISSUED FOR REVIEW	BMT	08/10/21



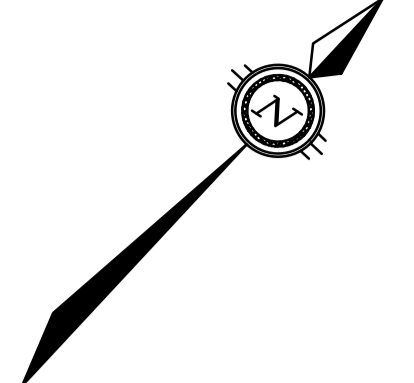
Page Setup: 22x34 FULL SIZE NORMAL FAST (LAYOUT)
DRAWING FRAME: 796mm x 594mm City of Ottawa 2008
THIS DRAWING AND ALL COPYRIGHT THEREIN ARE THE SOLE AND EXCLUSIVE PROPERTY OF exp SERVICES INC. REPRODUCTION OR USE OF THIS DRAWING IN WHOLE OR IN PART BY ANY MEANS OR IN ANY FORM WHATSOEVER WITHOUT THE PRIOR WRITTEN CONSENT OF exp SERVICES INC. IS STRICTLY PROHIBITED.

**ROAD MODIFICATIONS
ECHOWOODS AVENUE**



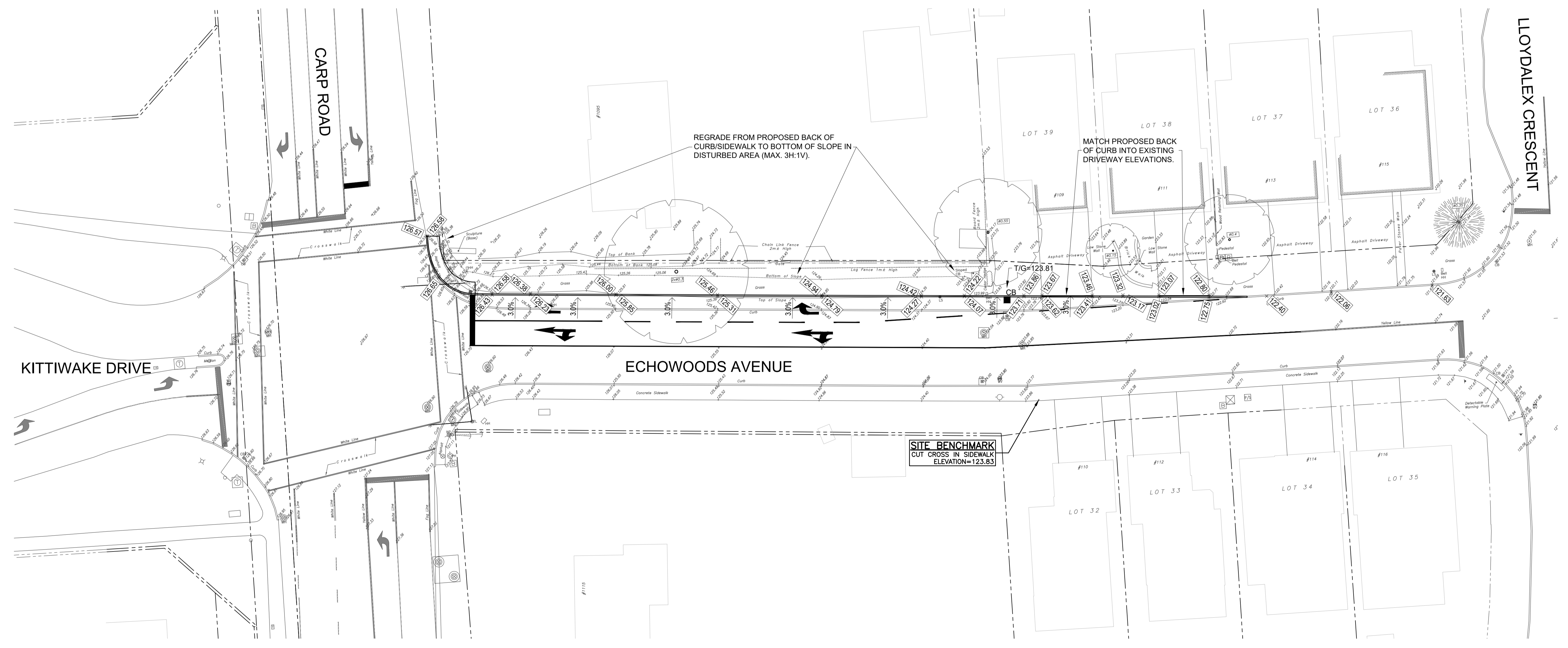
PAVEMENT ELEVATIONS

Contract No. OTT-00258780-A0	Dwg. No. 005
Sheet No.	6 of 7
Asset No.	--
Asset Group	ISD
Des.	Chkd. BMT
Dwn.	SAB Chkd. BMT
Utility Circ. No.	Index No.
Const. Inspector	
Scale: HORIZONTAL 1:250	

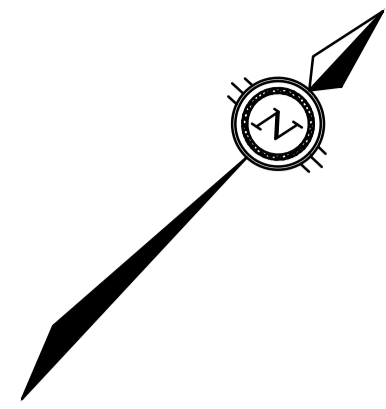


NOTE: The location of utilities is approximate only, the exact location should be determined by consulting the municipal authorities and utility companies concerned. The contractor shall prove the location of utilities and shall be responsible for adequate protection from damage.

NO.	Description	By	Date (dd/mm/yy)
1	ISSUED FOR REVIEW	BMT	08/10/21



File Name: I:\projects\080821\ECHWOODS\080821.dwg
 User: bmt
 Date: 10/20/21 2:28:34 PM
 Plot: 10/20/21 2:28:34 PM
 Plot File: I:\projects\080821\080821.dwg
 Plot Style: 22x34.dwt
 Plot Scale: 1:250
 Plot Size: 22x34
 Plot Orientation: Landscape
 Plot Color: Black
 Plot Lineweight: 0.25
 Plot Linetype: Solid
 Plot Font: Arial
 Plot Text Size: 10
 Plot Title Size: 12
 Plot Date Size: 10
 Plot User Size: 10
 Plot Sheet Size: 22x34
 Plot Sheet Count: 7
 Plot Sheet Order: 6
 Plot Sheet Name: 080821.dwg
 Plot Sheet Path: I:\projects\080821\080821.dwg



ROAD MODIFICATIONS
ECHOWOODS AVENUE



TRAFFIC PLANT

Contract No. OTT-00258780-A0 Dwg. No. 006

Sheet No. 7 of 7

Asset No. --

Stephen Willis, MCIP, RPP
General Manager

Asset Group ISD



exp Services Inc.
2315 DUNDAS STREET WEST
2ND FLOOR, SUITE 200
OTTAWA, ON K2G 1R9
416-462-2000
www.exp.com

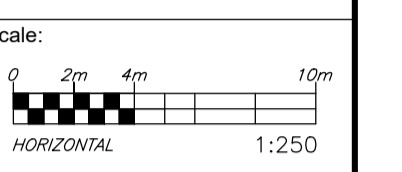
Des. -- Chkd. BMT

Dwn. SAB Chkd. BMT

Utility Circ. No. -- Index No. --

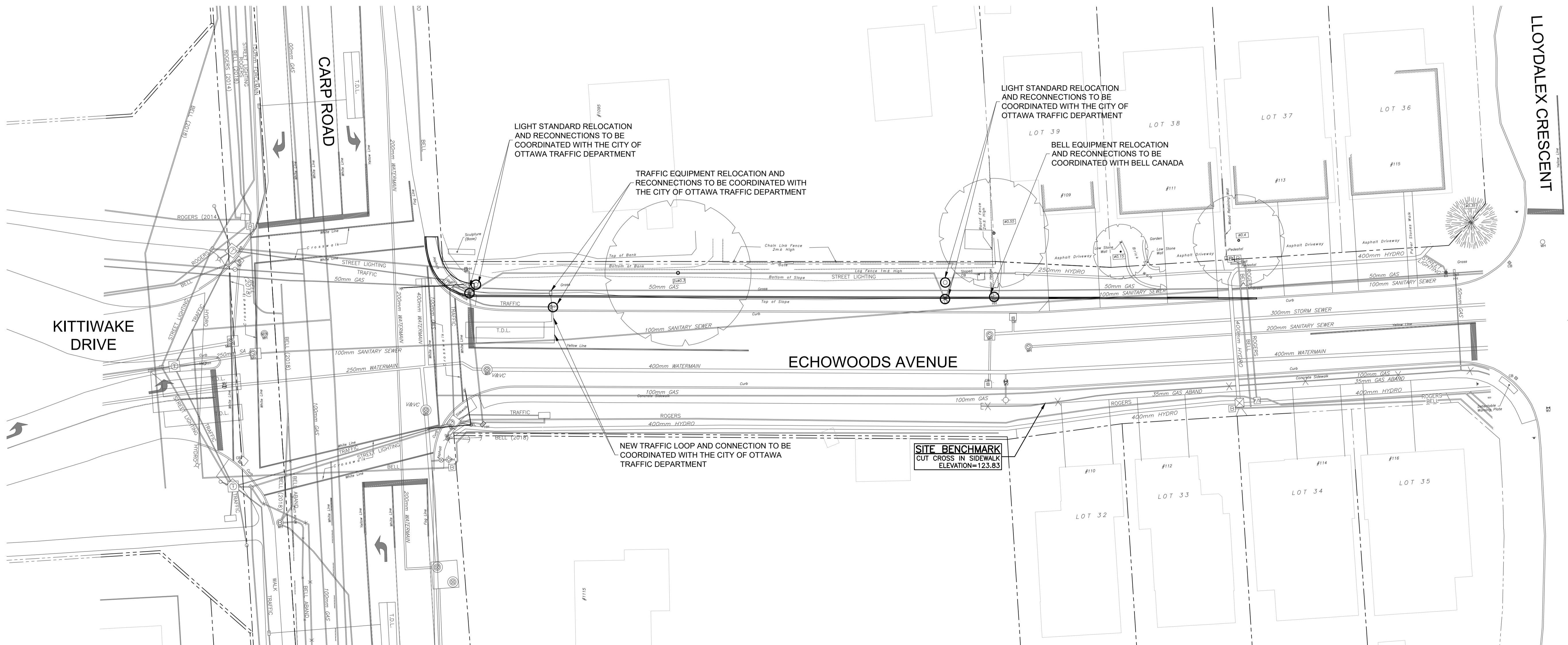
Const. Inspector --

Scale:



NOTE: The location of utilities is approximate only, the exact location should be determined by consulting the municipal authorities and utility companies concerned. The contractor shall prove the location of utilities and shall be responsible for adequate protection from damage.

NO.	Description	By	Date (dd/mm/yy)
1	ISSUED FOR REVIEW	BMT	08/10/21



File Name: \\exp\projects\00258780-A0\exp\00258780-A0.dwg
User: swhill
Date: 2021/10/21 2:29:34 PM
Plot: 2021/10/21 2:29:34 PM
Printer: PLOT01
Plot Scale: 1:1
Plot Size: 22x34
Plot Orientation: Landscape
Plot Range: All in View
Plot Center: (0,0)
Plot Scale: 1:1
Plot Size: 22x34
Plot Orientation: Landscape
Plot Range: All in View
Plot Center: (0,0)
Plot Scale: 1:1
Plot Size: 22x34
Plot Orientation: Landscape
Plot Range: All in View
Plot Center: (0,0)