

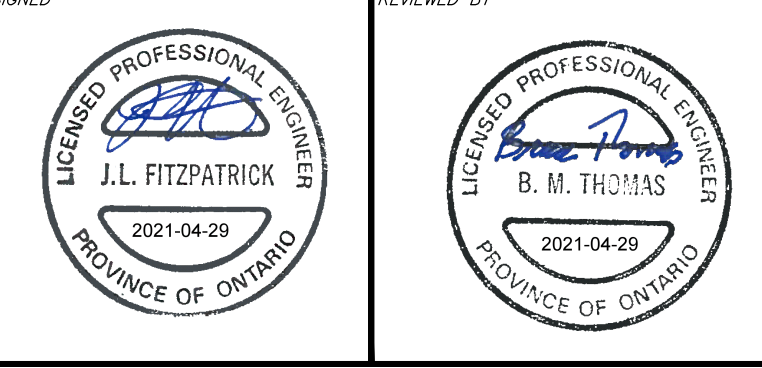
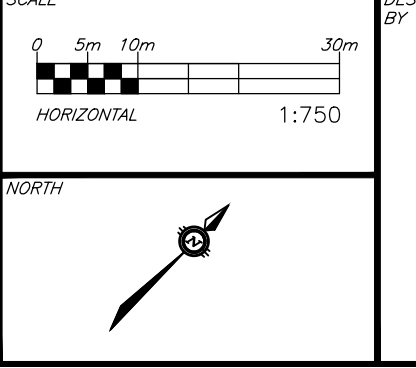
LEGEND

- PROPERTY LINE
- AREA NO
AREA IN Ha
POPULATION
- SANITARY DRAINAGE AREA
- SANITARY MH NUMBER
- PROPOSED OBVERT ELEVATIONS
- PROPOSED SANITARY MH/SEWER
- OUTSIDE PROPOSED DEVELOPMENT

CAUTION
THE POSITION OF ALL POLE LINES, CONDUITS, WATERMANS, SEWERS AND OTHER UNDERGROUND AND OVERGROUND UTILITIES AND STRUCTURES IS NOT NECESSARILY SHOWN ON THE CONTRACT DRAWINGS, AND WHERE SHOWN, THE ACCURACY OF THE POSITION OF SUCH UTILITIES AND STRUCTURES IS NOT GUARANTEED. BEFORE STARTING WORK, DETERMINE THE EXACT LOCATION OF ALL SUCH UTILITIES AND STRUCTURES AND ASSUME ALL LIABILITY FOR DAMAGE TO THEM.

**PRELIMINARY
NOT FOR CONSTRUCTION**

REV	REVISION DESCRIPTION	DATE	BY	APPD
2	SUBMISSION NO.2	04/27/21	SK	BMT
1	SUBMISSION NO.1	04/08/20	SK	BMT



CLIENT
11654128 CANADA INC.
768 BOULEVARD ST. JOSEPH
GATINEAU, QC

exp.
exp Services Inc.
1-877-688-1899 / 1-813-221-7330
2801 Chalmers Drive, Unit 100
Ottawa, ON K2B 9H9
Canada
www.exp.com
• BUILDINGS • EARTH & ENVIRONMENT • ENERGY •
• INDUSTRIAL • INFRASTRUCTURE • SUSTAINABILITY •

BASEPLAN
SK
DESIGN
JLF
CHECKED
BMT
CAD
SK
PROJECT MANAGER
JLF
APPROVED
BMT

PROJECT
6171 HAZELDEAN ROAD
OTTAWA, ONTARIO.

TITLE
MACRO SANITARY DRAINAGE
AREA PLAN

PROJECT No. 258780
SURVEY Z38800-FMW
DATE 24/07/20
DRAWING No. SANM