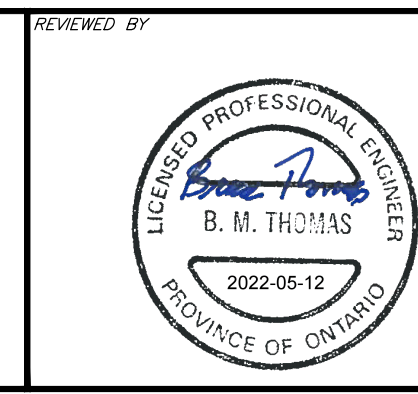
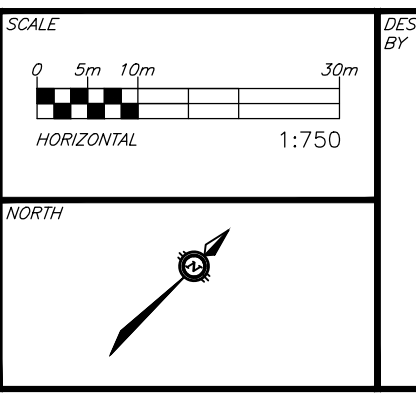


CAUTION
 THE POSITION OF ALL POLE LINES, CONDUITS, WATERMANS, SEWERS AND OTHER UNDERGROUND AND OVERGROUND UTILITIES AND STRUCTURES IS NOT NECESSARILY SHOWN ON THE CONTRACT DRAWINGS, AND WHERE SHOWN, THE ACCURACY OF THE POSITION OF SUCH UTILITIES AND STRUCTURES IS NOT GUARANTEED. BEFORE STARTING WORK, DETERMINE THE EXACT LOCATION OF ALL SUCH UTILITIES AND STRUCTURES AND ASSUME ALL LIABILITY FOR DAMAGE TO THEM.

JOB BENCH MARK JBM ▲
 TOP OF HEAD OF MAGNETIC NAIL SET IN SIDE OF CONCRETE SIGN
 BASE 0.24 ABOVE GRADE ELEVATION=120.77
 NORTHING=5014575.29 EASTING=349007.23

TOPOGRAPHIC INFORMATION
 PART OF LOT 12, CONCESSION 12, GEOGRAPHIC TOWNSHIP OF GOULBOURN, CITY OF OTTAWA.
 TOPOGRAPHIC INFORMATION PROVIDED BY FAIRHALL MOFFATT & WOODLAND LIMITED O.L.S (TP3882) SURVEY DATED JANUARY 14, 2020.
 SITE GRID SYSTEM MTM NAD 83, ZONE 9.

REV	REVISION DESCRIPTION	DATE	BY	APPD	REV	REVISION DESCRIPTION	DATE	BY	APPD
4	ISSUED FOR APPROVAL	05/12/22	SK	BMT					
3	REVISED PER CITY COMMENTS	09/24/21	SK	BMT					
2	SUBMISSION NO.2	04/27/21	SK	BMT					
1	SUBMISSION NO.1	04/08/20	SK	BMT					



LATITUDE HOMES
 1202 CARR ROAD
 STITTSVILLE, ON. K2S 1B9

exp.
 exp Services Inc.
 7-1110 BIRCH BLVD #114 1313 225 7300
 2600 Deseronto Drive, Unit 100
 Ottawa, ON K2B 1M6
 Canada
 • BUILDINGS • EARTH & ENVIRONMENT • ENERGY •
 • INDUSTRIAL • INFRASTRUCTURE • SUSTAINABILITY •

BASEPLAN	PROJECT
SK	HAZELDEAN HORIZONS
JLF	6171 HAZELDEAN ROAD
BMT	OTTAWA, ONTARIO.
SK	POST DEVELOPMENT
JLF	STORM DRAINAGE PLAN
BMT	

PROJECT No.	DATE	DRAWING No.
258780	24/07/20	C400

File name: \\exp\projects\121224\121224_121224_121224_121224.dwg
 User: jlf
 Date: 5/12/2022 10:45:43 AM
 Plot: 121224_121224_121224_121224.dwg
 Plot Date: 5/12/2022 10:45:43 AM
 Plot Scale: 1:750
 Plot Orientation: Landscape
 Plot Size: 121224_121224_121224_121224.dwg
 Plot Title: 121224_121224_121224_121224.dwg