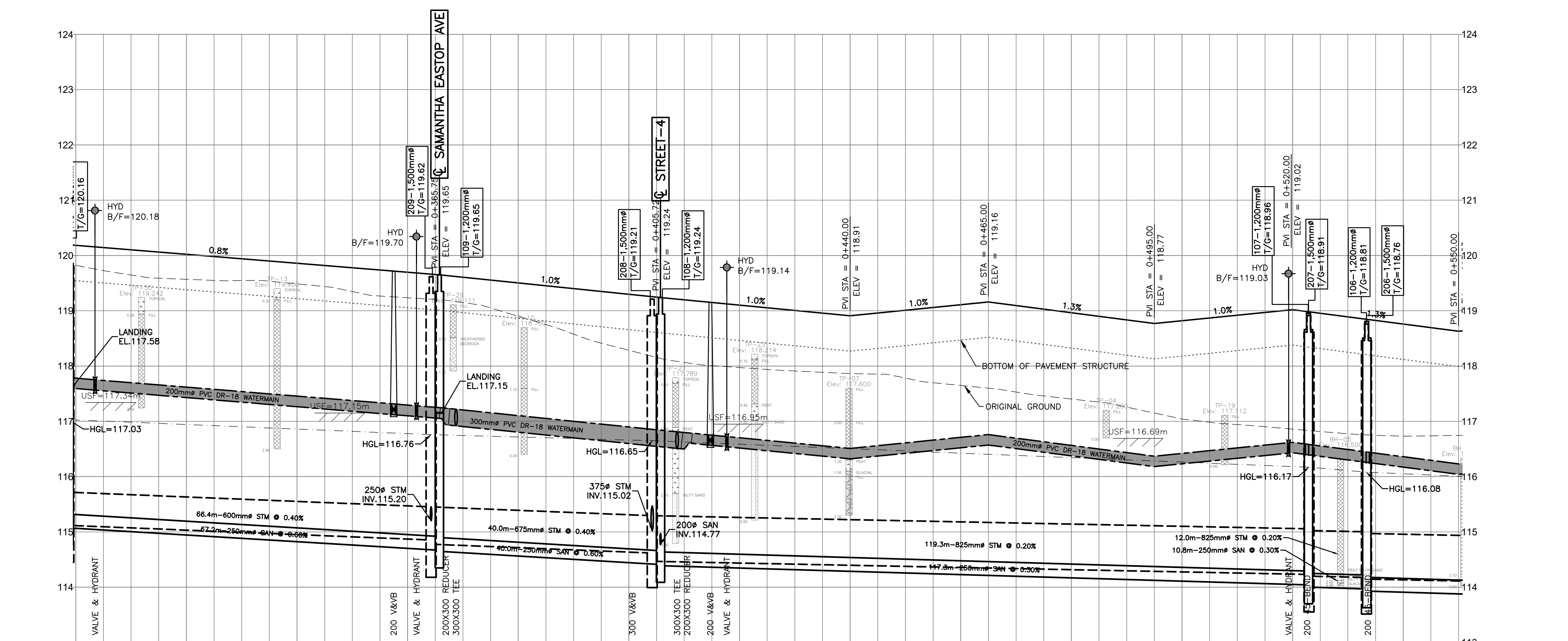


**LEGEND**

- PROPERTY LINE
- SANITARY MH NUMBER
- PROPOSED SANITARY MH/SEWER
- STORM MH NUMBER
- PROPOSED STORM MH/SEWER
- PROPOSED WATERMAIN
- OUTSIDE PROPOSED DEVELOPMENT



CHAINAGE	TOP OF WATERMAIN ELEVATION	STORM SEWER INVERTS	SANITARY SEWER INVERTS	CHAINAGE	TOP OF WATERMAIN ELEVATION	STORM SEWER INVERTS	SANITARY SEWER INVERTS
0+300.5	117.75			0+300.5	117.75		
0+320	117.62	66.4m-600mm <sup>Ø</sup> CONCRETE 100-D STM @ 0.40%	67.2m-250 PVC DR-35 SAN @ 0.60%	0+320	117.62		
0+340	117.46			0+340	117.46		
0+357.5	117.32			0+357.5	117.32		
0+360	117.28			0+360	117.28		
0+361.6	117.24			0+361.6	117.24		
0+362.2	117.22			0+362.2	117.22		
0+368.8	117.10	40.0m-675mm <sup>Ø</sup> CONCRETE 100-D STM @ 0.40%	40.0m-250 PVC DR-35 SAN @ 0.60%	0+368.8	117.10		
0+380	117.10			0+380	117.10		
0+400	116.89			0+400	116.89		
0+405.7	116.79			0+405.7	116.79		
0+410.5	116.75			0+410.5	116.75		
0+414.7	116.72			0+414.7	116.72		
0+417.7	116.70			0+417.7	116.70		
0+420	116.65			0+420	116.65		
0+440	116.51			0+440	116.51		
0+460	116.71	119.3m-825mm <sup>Ø</sup> CONCRETE 100-D STM @ 0.20%	117.3m-250 PVC DR-35 SAN @ 0.30%	0+460	116.71		
0+480	116.56			0+480	116.56		
0+500	116.42			0+500	116.42		
0+518.3	116.62			0+518.3	116.62		
0+520	116.59			0+520	116.59		
0+522.6	116.59			0+522.6	116.59		
0+533.6	116.44			0+533.6	116.44		
0+540	116.36			0+540	116.36		
0+560	116.69			0+560	116.69		
0+580	116.63			0+580	116.63		

CAUTION: THE POSITION OF ALL POLE LINES, CONDUITS, WATERMANS, SEWERS AND OTHER UNDERGROUND UTILITIES IS NOT NECESSARILY SHOWN ON THE CONTRACT DRAWINGS, AND WHERE SHOWN, THE ACCURACY OF THE POSITION OF SUCH UTILITIES AND STRUCTURES IS NOT GUARANTEED. BEFORE STARTING WORK, DETERMINE THE EXACT LOCATION OF ALL SUCH UTILITIES AND STRUCTURES AND ASSUME ALL LIABILITY FOR DAMAGE TO THEM.

**CAUTION**  
 THE POSITION OF ALL POLE LINES, CONDUITS, WATERMANS, SEWERS AND OTHER UNDERGROUND UTILITIES IS NOT NECESSARILY SHOWN ON THE CONTRACT DRAWINGS, AND WHERE SHOWN, THE ACCURACY OF THE POSITION OF SUCH UTILITIES AND STRUCTURES IS NOT GUARANTEED. BEFORE STARTING WORK, DETERMINE THE EXACT LOCATION OF ALL SUCH UTILITIES AND STRUCTURES AND ASSUME ALL LIABILITY FOR DAMAGE TO THEM.

**JOB BENCH MARK** JBM  
 TOP OF HEAD OF MAGNETIC NAIL SET IN SIDE OF CONCRETE SIGN  
 BASE 0.2± ABOVE GRADE ELEVATION=120.77  
 NORTHING=5014575.29 EASTING=349007.23

**TOPOGRAPHIC INFORMATION**  
 PART OF LOT 12, CONCESSION 12, GEOGRAPHIC TOWNSHIP OF GOULBOURN, CITY OF OTTAWA.  
 TOPOGRAPHIC INFORMATION PROVIDED BY FAIRHALL MOFFATT & WOODLAND LIMITED O.L.S (TP3862) SURVEY DATED JANUARY 14, 2020.  
 SITE GRID SYSTEM NTM NAD 83, ZONE 9.

REV	REVISION DESCRIPTION	DATE	BY	APPD
2	ISSUED FOR APPROVAL	05/12/22	SK	BMT
1	SUBMISSION NO.2	04/27/21	SK	BMT

SCALE  
 HORIZONTAL 1:500  
 VERTICAL 1:50

DESIGNED BY  
 J.L. FITZPATRICK  
 LICENSED PROFESSIONAL ENGINEER  
 PROVINCE OF ONTARIO

REVIEWED BY  
 B.M. THOMAS  
 LICENSED PROFESSIONAL ENGINEER  
 PROVINCE OF ONTARIO

OWNER  
**LATITUDE HOMES**  
 1202 CARP ROAD  
 STITTVILLE, ON. K2S 1B9

exp. Services Inc.  
 1-813-688-1899 | 1-613-225-7330  
 2550 Hazeldean Road, Unit 100  
 Ottawa, ON K2B 8H6  
 Canada  
 www.exp.com

BASE PLAN SK  
 DESIGN JLF  
 CHECKED BMT  
 CAD SK  
 PROJECT MANAGER JLF  
 APPROVED BMT

PROJECT  
**HAZELDEAN HORIZONS**  
 6171 HAZELDEAN ROAD  
 OTTAWA, ONTARIO.

PROJECT No. 258780  
 SURVEY 238800-FMW  
 DATE 24/07/20  
 DRAWING No. C303

PLAN AND PROFILE, STREET 2  
 STA.0+300 TO STA.0+550