

LEGEND

- PROPERTY LINE
- PROPOSED SANITARY MH/SEWER
- PROPOSED STORM MH/SEWER
- PROPOSED REAR YARD CATCH-BASIN TEE/ ELBOW PER CITY DETAIL S30 & S31
- PROPOSED 600x600 PCC CATCH-BASIN PER OPSD 705.010
- PROPOSED 600x600 PCC CATCH-BASIN PER OPSD 705.010 C/W ICD
- PROPOSED 1200mm PCC CATCH-BASIN MAINTENANCE HOLE PER OPSD 701.010 C/W ICD
- PROPOSED FIRE HYDRANT & VALVE
- PROPOSED WATERMAIN FITTINGS
- TACTILE WALKING SURFACE INDICATOR (TWS) AS PER CITY OF OTTAWA DWG. NO. SC7.3
- SPEED HUMP AS PER CITY OF OTTAWA DWG. NO. R19
- ROAD SIGN
- DEPRESSIONED CURB
- LANDSCAPE
- CONCRETE
- DRIVEWAY

PAVEMENT MARKING LEGEND:

1	SOLID YELLOW, 10cm
2	SOLID DOUBLE YELLOW, 10cm
3	363 BROKEN YELLOW, 10cm
4	SOLID YELLOW, 20cm
5	SOLID WHITE, 10cm
6	333 BROKEN WHITE, 10cm
7	363 BROKEN WHITE, 10cm
8	393 BROKEN WHITE, 10cm
9	SOLID WHITE, 20cm
10	111 BROKEN WHITE, 20cm
11	333 BROKEN WHITE, 20cm
12	333 BROKEN WHITE, 30cm
13	SOLID WHITE, 30cm
14	SOLID WHITE, 50cm
15	SOLID WHITE, 60cm
20	SOLID WHITE, SYMBOLS AND ARROWS
21	SHARKS TEETH, WHITE TRIANGLE, 60cmx30cm AT 30cm SPACING
22	LADDER CROSSWALK, 60cmx30cm BLOCKS @ 60cm SPACING, OUTLINED BY TWO SOLID WHITE 10cm TRANSVERSE LINES

NOTES:

- 333, 363, 393 DENOTES PAVEMENT MARKING SPACING (IE, 3m LINE, 3m GAP, 3m LINE)
- USE (P) TO DENOTE PAVEMENT MARKING
- USE (D) TO DENOTE PAVEMENT MARKING, DURABLE
- USE (T) TO DENOTE PAVEMENT MARKING, TEMPORARY
- USE (R) TO DENOTE PAVEMENT MARKING, TEMPORARY-REMOVABLE
- ALL SIGNING, MARKING AND DELINEATION MUST CONFORM TO ONTARIO TRAFFIC MANUAL (OTM)

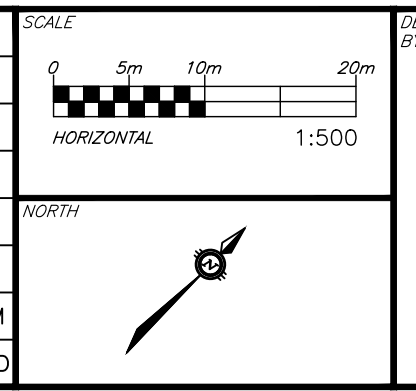
MATCHLINE SEE DWG. C801

CAUTION
THE POSITION OF ALL POLE LINES, CONDUITS, WATERMANS, SEWERS AND OTHER UNDERGROUND AND OVERGROUND UTILITIES AND STRUCTURES IS NOT NECESSARILY SHOWN ON THE CONTRACT DRAWINGS, AND WHERE SHOWN, THE ACCURACY OF THE POSITION OF SUCH UTILITIES AND STRUCTURES IS NOT GUARANTEED. BEFORE STARTING WORK, DETERMINE THE EXACT LOCATION OF ALL SUCH UTILITIES AND STRUCTURES AND ASSUME ALL LIABILITY FOR DAMAGE TO THEM.

JOB BENCH MARK JBM ▲
TOP OF HEAD OF MAGNETIC NAIL SET IN SIDE OF CONCRETE SIGN
BASE 0.2± ABOVE GRADE ELEVATION=120.77
NORTHING=5014575.29 EASTING=349007.23

TOPOGRAPHIC INFORMATION
PART OF LOT 12, CONCESSION 12, GEOGRAPHIC TOWNSHIP OF GOULBOURN, CITY OF OTTAWA.
TOPOGRAPHIC INFORMATION PROVIDED BY FAIRHALL MOFFATT & WOODLAND LIMITED O.L.S (TP3862) SURVEY DATED JANUARY 14, 2020.
SITE GRID SYSTEM NTD NAD 83, ZONE 9.

REV	REVISION DESCRIPTION	DATE	BY	APPD
1	ISSUED FOR APPROVAL	14/10/22	SJK	YMM



DESIGNED BY
V.M. MCNEREAU
100225757
PROFESSIONAL ENGINEER
ONTARIO



OWNER
exp.

LATITUDE HOMES
1202 CARP ROAD
STITTSVILLE, ON. K2S 1B9

exp Services Inc.
1-416-368-1899 | 1-613-225-7330
3055 Cassiar Road, Unit 100
Ottawa, ON K2B 8H6
Canada
www.exp.com

• BUILDINGS • EARTH & ENVIRONMENT • ENERGY •
• INDUSTRIAL • INFRASTRUCTURE • SUSTAINABILITY •

PROJECT	PROJECT NO.
HAZELDEAN HORIZONS 6171 HAZELDEAN ROAD OTTAWA, ONTARIO.	258780
DESIGN	SURVEY
SAB	238800-FMW
CHECKED	DATE
SJK	24/07/20
PROJECT MANAGER	DRAWING NO.
MJDC	C800
APPROVED	
YMM	
TITLE	
PAVEMENT MARKINGS, SIGNAGE AND GEOMETRY PLAN	

