

**Surveyor's Certificate**  
 I CERTIFY THAT:  
 1. This survey and plan are correct and in accordance with the Survey Act and the Surveyors Act and the regulations made under them.  
 2. The survey was completed on the 8th day of April, 2020.  
 Date: April 21, 2020  
 E. H. Herweyer  
 Ontario Land Surveyor

**Notes & Legend**

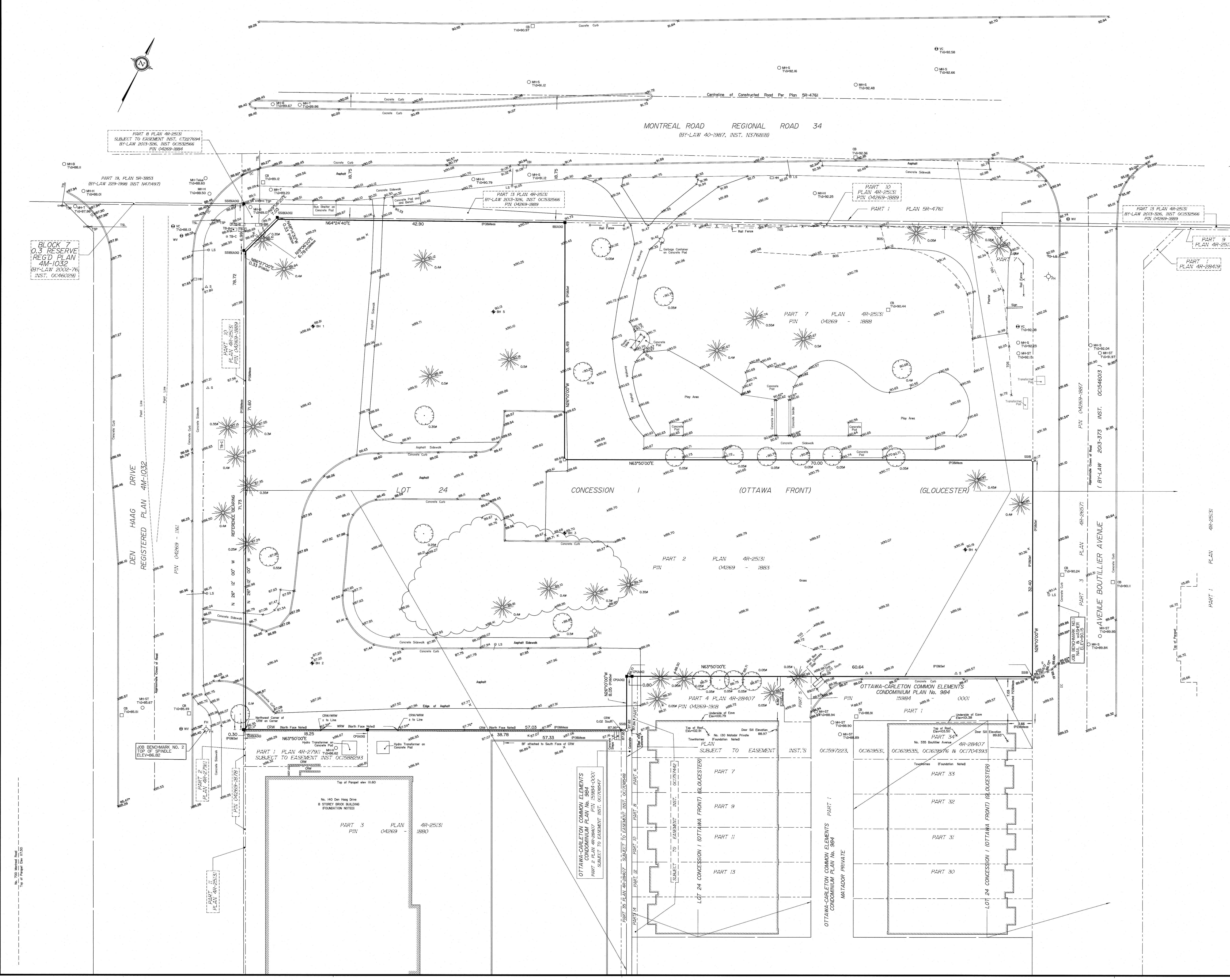
Denotes	
	Survey Monument Planted
	Survey Monument Found
	Standard Iron Bar
	Short Standard Iron Bar
	Iron Bar
	Cut Cross
	Concrete Pin
	Witness Measurand
	Annis, O'Sullivan, Vollebek Ltd.
	Plan AR-25131
	Plan (AOG) February 14, 2017
	Deciduous Tree
	Coniferous Tree
	Fire Hydrant
	Water Valve
	Maintenance Hole (Storm Sewer)
	Maintenance Hole (Sanitary)
	Maintenance Hole (Bell Telephone)
	Maintenance Hole (Traffic)
	Maintenance Hole (Hydro)
	Maintenance Hole (Telus)
	Valve Chamber (Watermain)
	Catch Basin
	Catch Basin Inlet
	Bottom of Slope
	Top of Slope
	Borehole
	Handhole
	Bell Terminal Box
	Cable Terminal Box
	Traffic Signal Post
	Bollard
	Sign
	Post and Wire
	Traffic Light
	Light Standard
	Mail Box
	Location of Elevations
	Top of Concrete Curbs/Wall Elevation
	Centreline
	Depressed Curb

Bearings are grid, derived from the easterly limit of Den Haag Drive shown to be N29°12'00"W on Plan AR-25131 and are referred to the Central Meridian of MTM Zone 9 (76°30' West Longitude) NAD-83 (original).

ASSOCIATION OF ONTARIO  
 LAND SURVEYORS  
 PLAN SUBMISSION FORM  
**2121856**  
  
 THIS PLAN IS NOT VALID UNLESS  
 IT IS AN EMBOSSED ORIGINAL  
 COPY ISSUED BY THE SURVEYOR  
 In accordance with  
 Regulation 1008, Section 29 (2)

**ELEVATION NOTES**  
 1. Elevations shown are geoidic and are referred to the CGVD28 geoidic datum, derived from City of Ottawa vertical control monument No. G-151 having an elevation of 105.576 metres.  
 2. It is the responsibility of the user of this information to verify that the job benchmark has not been altered or disturbed and that its relative elevation and description agrees with the information shown on this drawing.

**UTILITY NOTES**  
 1. This drawing cannot be accepted as acknowledging all of the utilities and it will be the responsibility of the user to contact the respective utility authorities for confirmation.  
 2. Only visible surface utilities were located.  
 3. A field location of underground plant by the pertinent utility authority is mandatory before any work involving breaking ground, probing, excavating etc.



No. 100 Montreal Road  
 Top of Flagpole Elev. 172.50

JOB BENCHMARK NO. 2  
 TOP OF SPINDLE  
 ELEV. 106.82

PART 13 PLAN AR-25131  
 BY-LAW 2013-326 INST. OC1532966  
 PIN 04269-1884

PART 14 PLAN 59-3893  
 BY-LAW 229-1986 INST. N474977

PART 10 PLAN AR-25131  
 BY-LAW 2013-326 INST. OC1532966  
 PIN 04269-1889

BLOCK 7  
 0.3 RESERVE  
 REG'D PLAN  
 4M-1032  
 (BY-LAW 2002-76)  
 INST. OC1462329

PART 10 PLAN AR-25131  
 BY-LAW 2013-326 INST. OC1532966  
 PIN 04269-1889

PART 13 PLAN AR-25131  
 BY-LAW 2013-326 INST. OC1532966  
 PIN 04269-1889

PART 13 PLAN AR-25131  
 BY-LAW 2013-326 INST. OC1532966  
 PIN 04269-1889

PART 13 PLAN AR-25131  
 BY-LAW 2013-326 INST. OC1532966  
 PIN 04269-1889

PART 13 PLAN AR-25131  
 BY-LAW 2013-326 INST. OC1532966  
 PIN 04269-1889

PART 13 PLAN AR-25131  
 BY-LAW 2013-326 INST. OC1532966  
 PIN 04269-1889

PART 13 PLAN AR-25131  
 BY-LAW 2013-326 INST. OC1532966  
 PIN 04269-1889