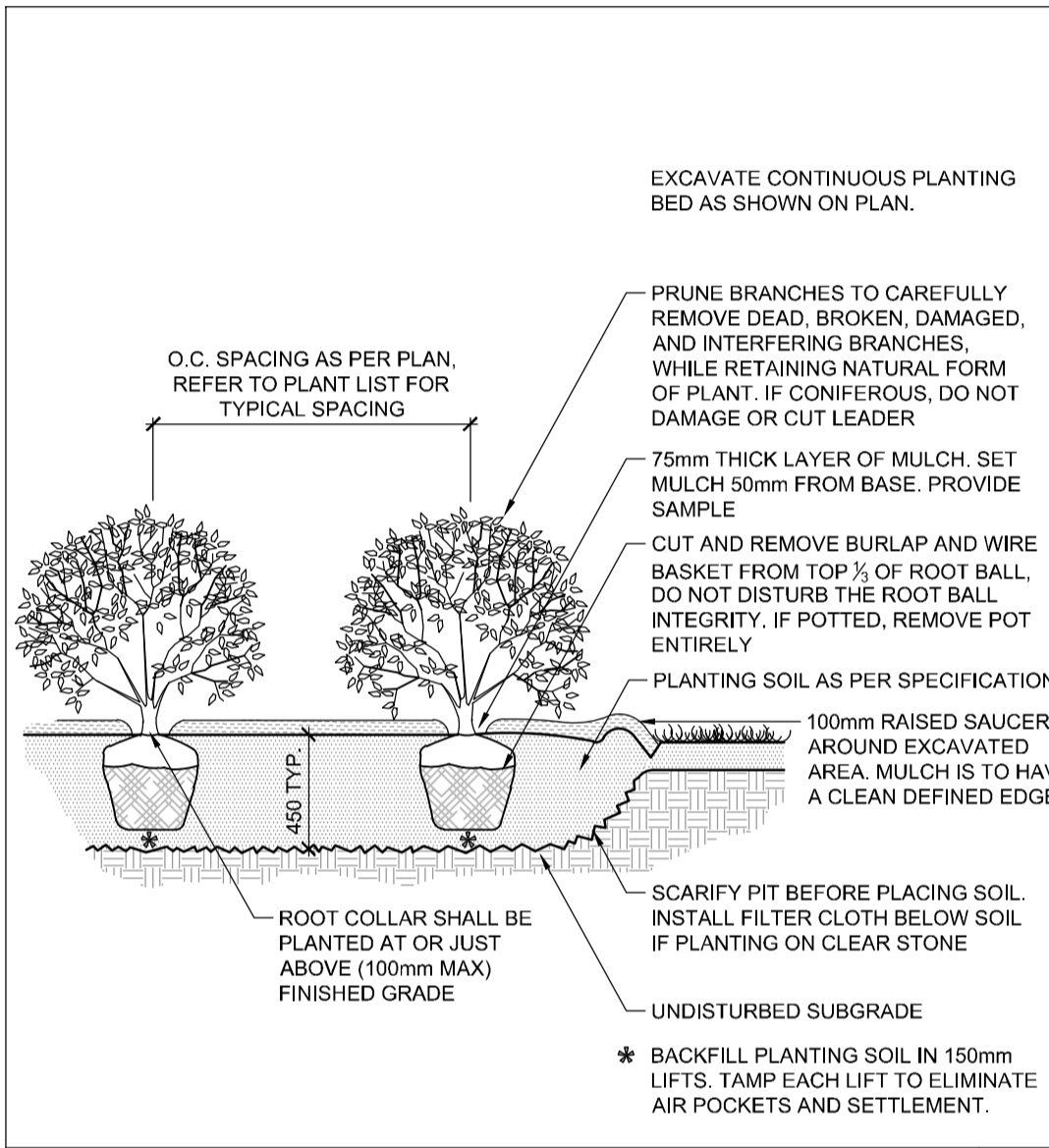
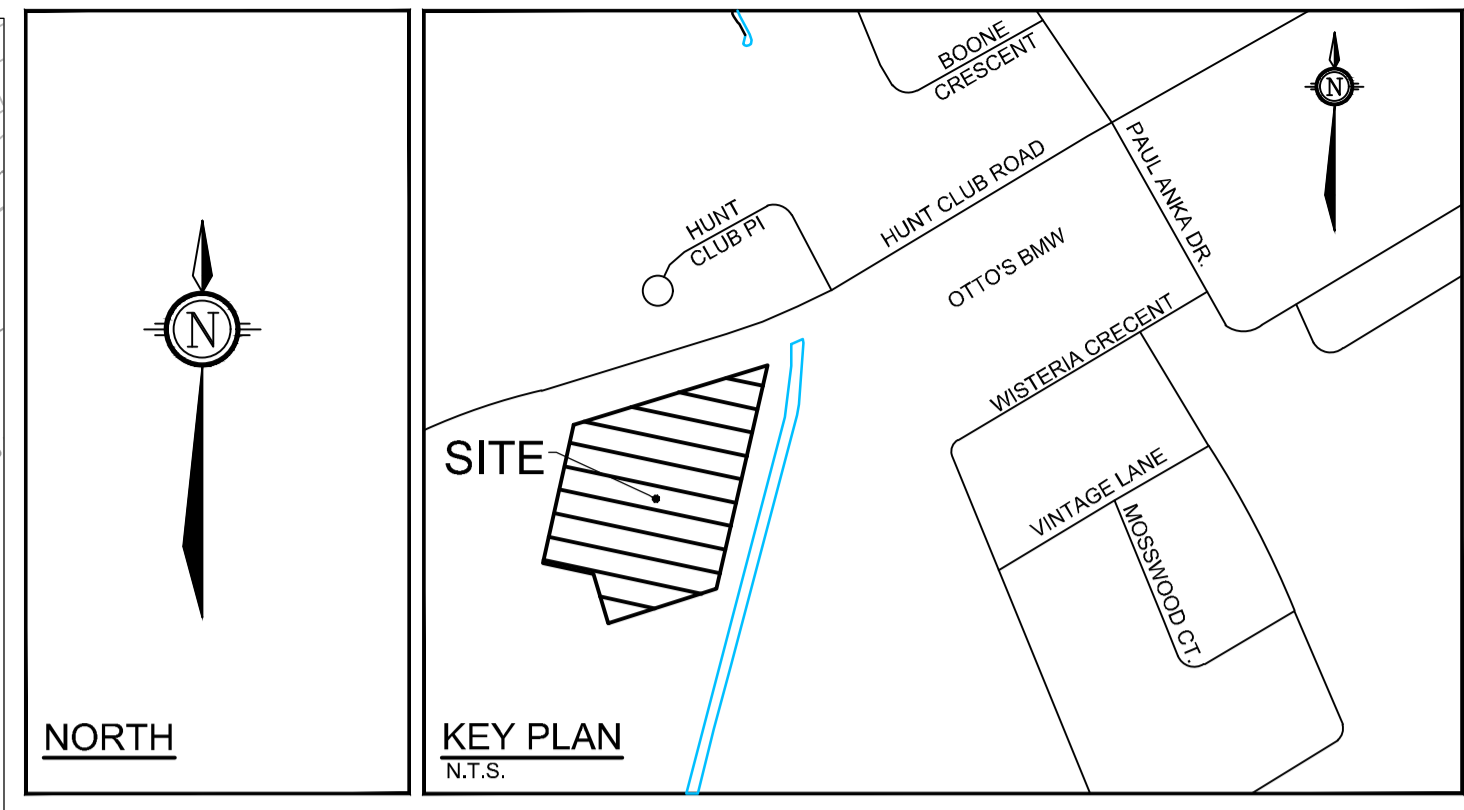
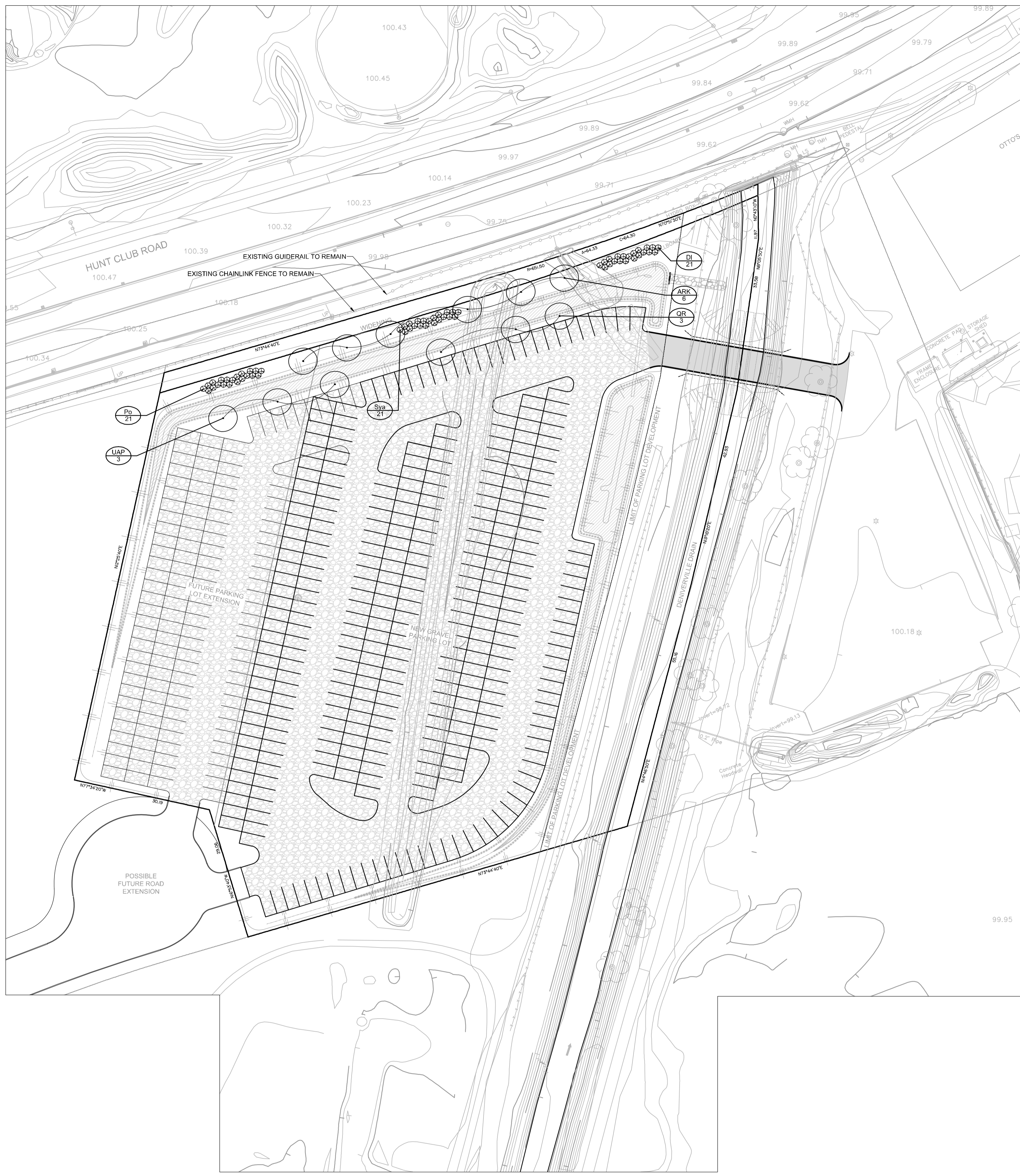


STANDARD DECIDUOUS TREE PLANTING D1



SHRUB AND PERENNIAL PLANTING D2



- LEGEND**
- PROPOSED DECIDUOUS TREE
 - PROPOSED SHRUBS
 - SPECIES (SEE PLANT LIST)
 - QUANTITY
 - GRAVEL

- GENERAL**
- Read and interpret this drawing/ drawing set in conjunction with all the contract details and specifications, including related civil, utility, structural, architectural, mechanical, electrical, environmental, geotechnical, and survey information.
 - The Contractor is to determine the exact location, size, material, and elevation of all existing utilities prior to commencing construction. Protect and assume responsibility for all existing utilities regardless of being shown on the drawings.
 - It is essential to use the plans and details in conjunction with the specifications and notes.
 - Do not scale drawings. Work to dimensions only.
 - Protect all existing and retained vegetation for the duration of construction according to the contract details and specifications.
 - Reinstate all areas and items damaged or disturbed, beyond the Limit of Work, because of construction activities, including but not limited to construction staging areas, haul roads, stockpile areas, etc. to the satisfaction of the Consultant. Unless otherwise noted, Contractor is to reinstate all areas to pre-construction condition or better to the satisfaction of the Contract Administrator.
- PLANTING**
- Plant material to be No. 1 Grade and is to comply with Canadian Standards for Nursery Stock (latest edition) published by the Canadian Nursery Landscape Association. Use structurally sound plant material with strong fibrous root system free of disease, defects, and injuries. Use trees with straight trunks, well and characteristically branched for species. Obtain approval from consultant of plant material at source prior to digging. All trees and shrubs to be container grown, potted, WB or SB, as indicated on Plant List. Bare root plants are only acceptable for certain species and as approved by the Landscape Architect.
 - Plant material substitutions are not permitted without the written approval from the Consultant, with 48 hours notice, prior to shipping plant material.
 - Plant locations are schematic / approximate only. Contractor is to stake out locations on site for approval by the Landscape Architect prior to installation.
 - The illustrated number of plants shown in the Planting Plan supersedes the estimated number in the Plant List. Contractor to report any discrepancies to the Landscape Architect prior to installation. Contractor will assume full responsibility if the Landscape Architect is not notified.
 - Ensure trees are thoroughly watered following planting. Monitor material and ensure adequate moisture until acceptance.
 - In heavy clay or poorly drained soils, set root ball with root collar 75-100mm higher than finished grade.
 - Approved topsoil depths are as follows:
 - Plant Beds - 450mm continuous depth. Applies to shrubs, perennials, vines, and groundcovers.
 - Sod/ Seed Areas - 100mm depth.
 - Reforestation - 300mm depth.
 - Sod to be No. 1 Kentucky Bluegrass Sod grown from minimum mixture of 3 Kentucky Bluegrass cultivars. Quality and source are to comply with Canadian Standards for Nursery Stock, Section 17, (latest edition) published by the Canadian Nursery Landscape Association.
 - Install a 1.2m sod strip adjacent to all hard surfaces. Note, sod is not typically graphically shown on plans.
 - Apply the following mineral fertilizer unless soil tests show other requirements:
 - Plant Beds - (8-32-16), i.e. 8% Nitrogen, 32% Phosphorus, 16% Potash per manufacturer specifications.
 - Sod Areas - (8-32-16), i.e. 8% Nitrogen, 32% Phosphorus, 16% Potash at a rate of 350kg/ha.
 - Where applicable, for any plant areas with a mix of species/ cultivars notes, Contractor is to cluster like plants in groups of 3-5 and evenly distribute these in the noted area.

SEED MIX AND APPLICATION

For areas steeper than 3:1, Contractor to apply erosion control blanket. Erosion control blanket to be machine woven mats made from natural wood, coco or cotton fiber, or combination depending on manufacturer, with stitching between two photo-degradable natural organic fiber nettings. Submit products for approval by Consultant. OPSS 804 applies except as may be amended and extended herein.

In addition to the specified seed mixes, all applications are to include a nurse crop as noted.

NURSE CROP
Annual Ryegrass
Seeding Rate: 25kg/hectare
GREENFIELDS SEED MIX BY DLF
Seeding Rate: 175kg/hectare

PLANT LIST

111177-L5 - Plant List

KEY	QTY	BOTANICAL NAME	COMMON NAME	SIZE	COND	SPACING	MATURE HT.
Deciduous Trees							
ARK	5	Acer rubrum 'Karpick'	Karpick Red Maple	50mm Cal	WB	As Shown	12m
QR	3	Quercus rubra	Red Oak	50mm Cal	WB	As Shown	22m
UAP	3	Ulmus americana 'Princeton'	Princeton Elm	50mm Cal	WB	As Shown	23m
Deciduous Shrubs							
DI	21	Diervilla lonicera	Bush Honeysuckle	60cm Ht	PT	As Shown	1.0m
Po	21	Physocarpus opulifolius	Common Ninebark	60cm Ht	PT	As Shown	2.0m
Sya	21	Symphoricarpos albus	Snowberry	60cm Ht	PT	As Shown	1.5m

NOTE:
THE POSITION OF ALL POLE LINES, CONDUITS, WATERMANS, SEWERS AND OTHER UNDERGROUND AND OVERGROUND UTILITIES AND STRUCTURES IS NOT NECESSARILY SHOWN ON THE CONTRACT DRAWINGS, AND WHERE SHOWN, THE ACCURACY OF THE POSITION OF SUCH UTILITIES AND STRUCTURES IS NOT GUARANTEED, BEFORE STARTING WORK, DETERMINE THE EXACT LOCATION OF ALL SUCH UTILITIES AND STRUCTURES AND ASSUME ALL LIABILITY FOR DAMAGE TO THEM.

NOT FOR CONSTRUCTION

No.	REVISION	DATE	BY
1.	SITE PLAN APPLICATION	MAY 4/21	RGJ

SCALE

1:500

FOR REVIEW ONLY

DESIGN	MEL / RGJ
CHECKED	RGJ
DRAWN	MEL
CHECKED	RGJ
APPROVED	RGJ

NOVATECH
Engineers, Planners & Landscape Architects
Suite 200, 240 Michael Cowpland Drive
Ottawa, Ontario, Canada K2M 1P6
Telephone (613) 254-9643
Facsimile (613) 254-5867
Website www.novatech-eng.com

LOCATION
CITY OF OTTAWA
OTTO'S - OVERFLOW PARKING EXPANSION

DRAWING NAME
OVERFLOW PARKING EXPANSION
LANDSCAPE PLAN

PROJECT No. 111177-00
REV #1
DRAWING No. 111177-L5

M:\2011\11177\CAD\Landscapes\SPA - Subdivision\11177-L5.dwg, L1 (stoplan), May 06, 2021 - 3:29pm, mbeat